



**SL** SALT LAKE  
COUNTY  
PARKS & RECREATION

# 2023 ANNUAL REPORT

[slco.to/parks-rec](https://slco.to/parks-rec)

# Improving lives through...



**19**   
pools

**9** outdoor pools

**10** indoor pools

**24,239** swim lesson participants

 **24**  
neighborhood parks

**42** regional parks

**4,503** additional open space acres

**9,605** park reservations

**21**   
recreation, aquatic, and ice centers

**2** field houses

**165,312** program participants

**2,199,281** recreation center visit

**6**  
golf courses

 **1,231** Junior Golf participants  
**436,990** golf rounds

**28**   
adaptive programs

**1,326** youth with disabilities

**2,164** adults with disabilities

**1**   
historic working farm

**29** farmers'/local artisan markets

**1,627** farmhouse tours

**6,345** field trip students

**4**   
ice sheets

**15,792**

Youth  
Learn-to-Skate  
participants

  
**350**  
miles of trails

**4**   
licensed childcare programs  
**1,523** children enrolled in childcare

...people, parks, and play

# DIRECTOR MESSAGE

It's exciting to share so many incredible moments from this past year. Working together with county partners, cities, and private entities we were able to both optimize and maximize a variety of recreation amenities around the county.

2023 has truly been a banner year, from the completion of Parley's Trail, to new multi-user trails in Butterfield Trailhead Regional Park, to the renovation and official opening of the Larry H. Miller Softball Complex at Valley Regional Park, and to the anxiously awaited ribbon cutting of Bingham Creek Regional Park in South Jordan.

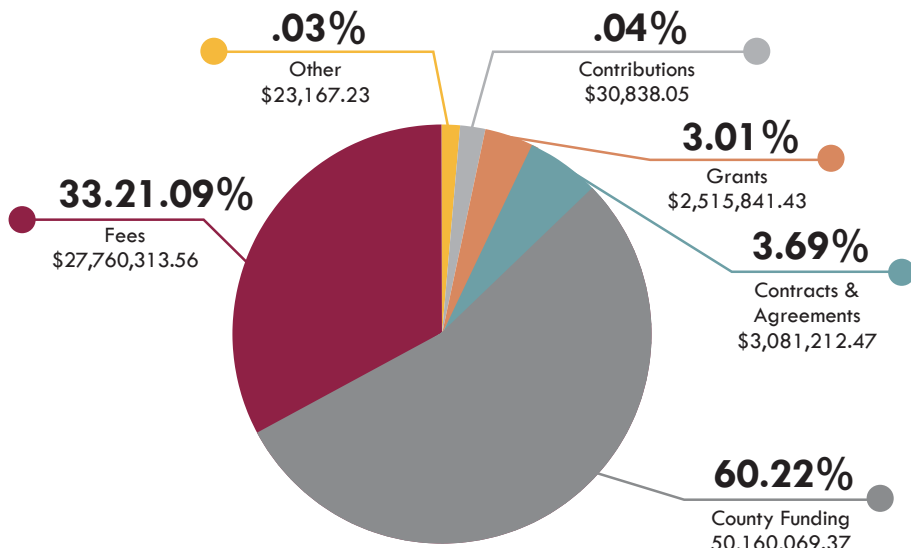
Thanks to the American Rescue Plan Act (ARPA) and Transformation Initiative (TI) funding, we were able to begin updating irrigation systems at several facilities. We were also able to initiate the conversion of three athletic fields to synthetic turf. These proactive measures reduce water use through smart water management systems and design, benefit everyone in the community, now and in the future.

Whether learning how to golf, skate, swim, play basketball, or milk a cow, the vast offerings available from Salt Lake County Parks and Recreation continue to be popular among community members of all ages and abilities. The Salt Lake County Parks and Recreation team is honored to be trusted stewards of parks and recreation amenities in Salt Lake County. We look forward to another year of improving lives through people, parks, and play in 2024.

**Martin Jensen**, Salt Lake County Parks & Recreation Director

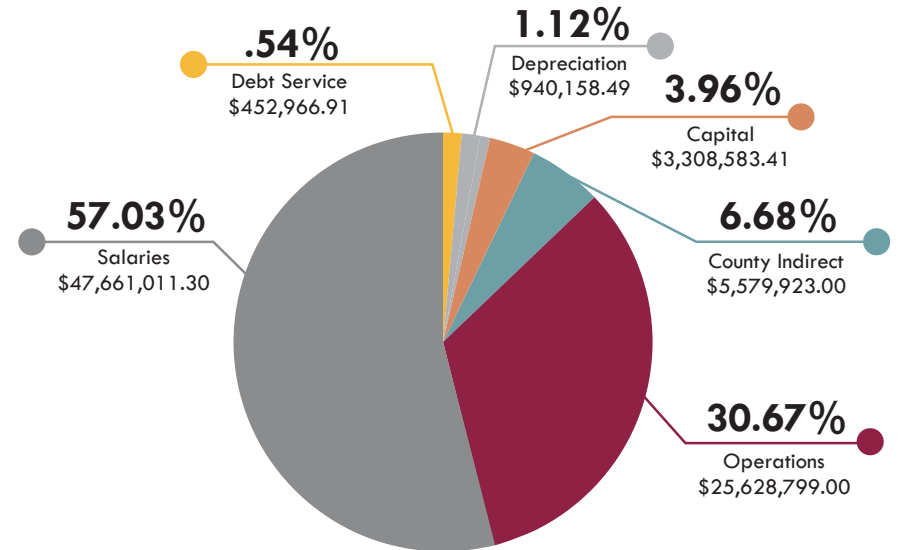


# FINANCIAL OVERVIEW



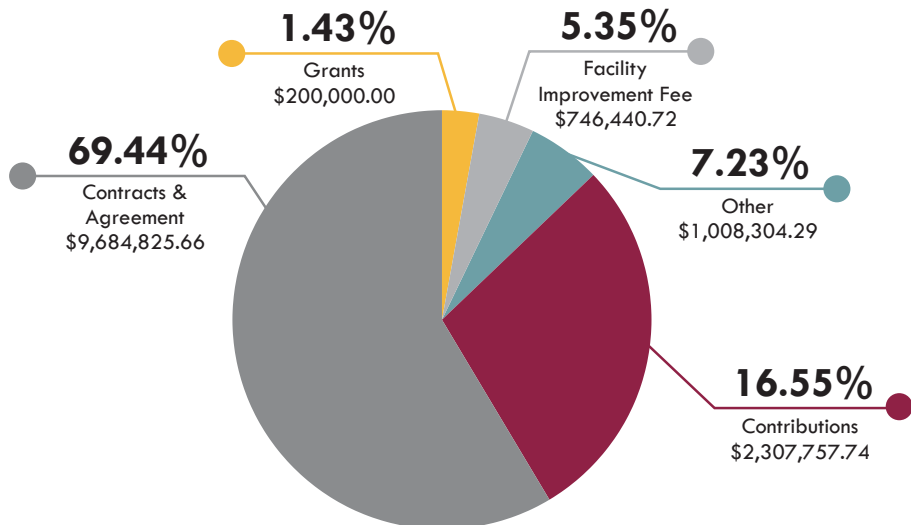
**FUNDING SOURCES**

Total: \$83,571,442.11



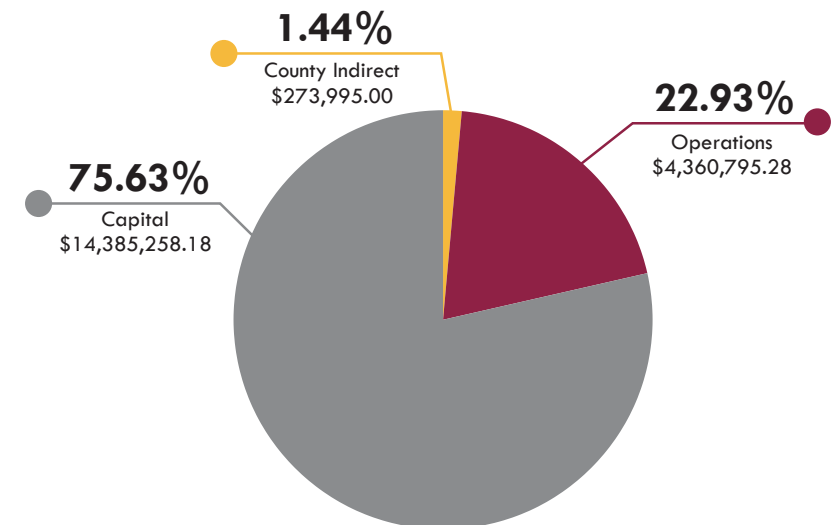
**OPERATING EXPENSES**

Total: \$83,571,442.11



**CAPITAL PROJECT REVENUE**

Total: \$13,947,328.41

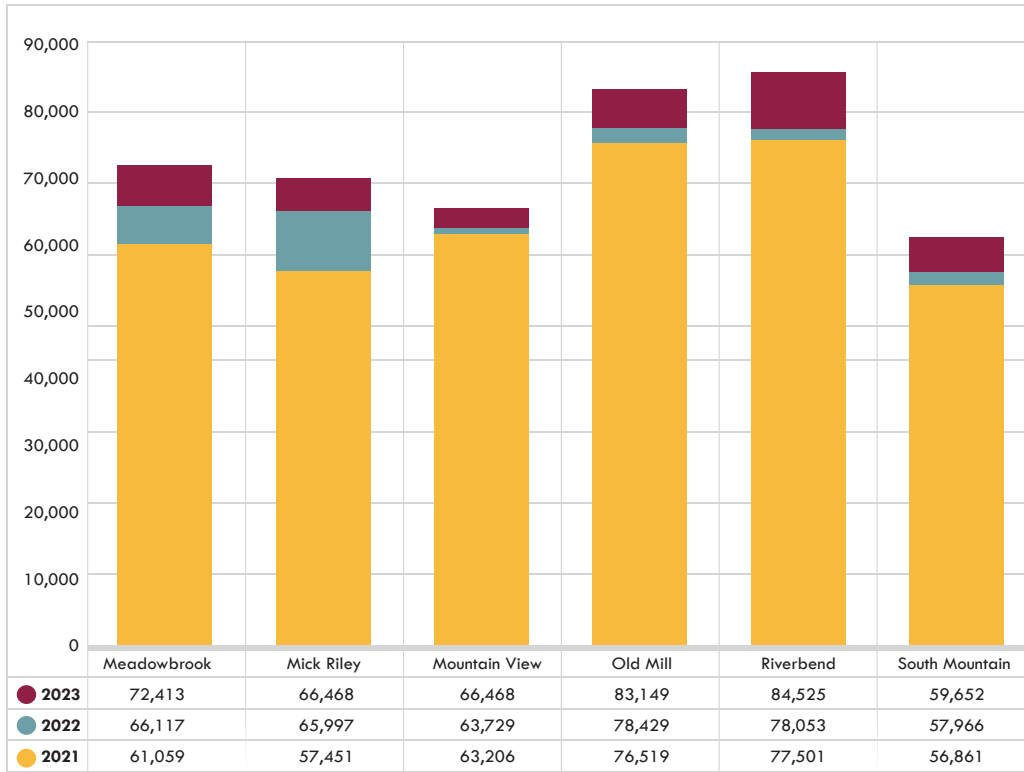


**CAPITAL PROJECT EXPENSES**

Total: \$19,020,048.46

# GOLF COURSES

Our golf courses continue to experience record-breaking rounds and revenue:



## Junior Golf

**1,231**

Junior Golf participants

**119** League participants

**239** Camp participants

**873** Clinic participants



**436,990** Total Rounds

**\$11,303,276** Revenue



# WHEELER HISTORIC FARM

A beloved community gathering and learning space for people of all ages, abilities, backgrounds, and interests.



**1,627**  
Farmhouse tours

**721** birthday party participants

**879** horse and summer camp participants

**1,530** milking demonstrations

**3,260** volunteer hours

**6,345** field trip students

**35,412** wagon rides

## Farmers Market

From fresh produce to handmade food, goods, and art, shoppers enjoy options from a variety of local artisans. To ensure everyone has access to healthy, locally grown food options, Supplemental Nutrition Assistance Program (SNAP) tokens and Double Up Food Bucks are distributed at Sunday Market.

**122**

small businesses/local artisans

**22** Sunday Markets

**4** Winter Markets

**1** Holiday Market

**\$8,857**  
SNAP tokens

**\$7,265**  
Double Up Food Bucks



Several animals live on the farm and they are loved by thousands of visitors.

**8** Horses

**2** Ponies

**1** Donkey

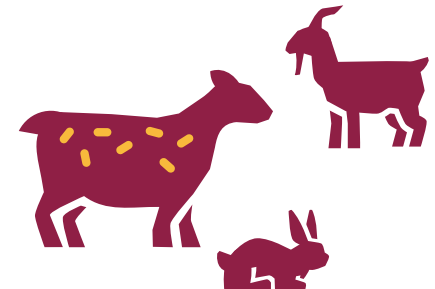
**7** Cows

**5** Goats

**8** Sheep

**1** Rabbit

**4** Pigs





“

We can always build another building, but every time we do, it's less open space for us to enjoy. Our valley is blessed with stunning landscapes and access to recreation. Let's protect these vital areas.

”

— Mayor Jenny Wilson

*State of the County Address, January 23, 2023*

# IMPROVING SPACES AND PLACES

**Working collaboratively across all teams—Park Planning and Development; Recreation; Golf; Community Engagement; Administration and Finance; Parks, Trails, and Open Space—we actively improve and preserve spaces and places to enhance user experience and expand recreation opportunities countywide.**



## **Funding sources include:**

- Tourism, Recreation, Culture, and Convention (TRCC)
- 2016 Zoo, Arts, and Parks (ZAP) Bonds
- Grants
- Facility Improvement Fees (FIF)
- American Rescue Plan Act (ARPA)

## **Annual projects include new builds, improvements, and renovations.**

This year, ARPA funds allowed us to begin infrastructure improvements including replacing and/or updating several irrigation systems with smart water management technology and piloting synthetic turf at Salt Lake County Athletic Fields.

## **Master planning for 2025–2034 is underway.**

Public involvement is key to the master planning process to ensure accessible, equitable, sustainable, and quality design for everyone.



# OUR TEAM

 **4,714**  
employees

**343** merit employees

**4,690** temporary employees

More than **1.6 million** hours worked

**27,014** work orders completed for parks, trails, and open spaces

## Staff Summit

Each year, our staff gather from all corners of the valley for learning and collaboration time with peers. This unique event brings together our parks, recreation, planning, golf, and administration teams to provide insights and connections into our work. Staff learn how they fit into the larger parks and rec picture, develop professional skills, and have a chance to meet, network, and socialize with their peers. Over 200 full-time employees participated in the 2023 staff summit and reignited their passion for the work we do and learned to better make and keep promises to ourselves, our community, and coworkers.



## County Years of Service Milestones

**35**

Tad Campbell

**30**

Tracey Gines  
Charles Hays

**25**

Jason Kehr  
Brittney Russell  
Justin Staley

**20**

Susan Carhart  
Kari White

**15**

Racheal Bailey  
David Beckwith  
Richard Borg  
Angela Hansen  
Melissa Lugo  
Lynn Riches  
Carter Schofield  
Ryan Thierbach  
Troy Watkins

**10**

Taylor Abegglen  
Travis Daniels  
Joe Garcia

Donald Gore

Christopher Gresh  
Jeffrey Pratt  
Sara Roach  
Mark Smith  
Britney Vigil  
Mary Weinle

**5**

Phillip Bingham  
Milton Cacho  
Scott Case  
Kyle Darling  
Chad Draper  
Kaden Harrison

Tanner Harrison  
Nathan Lundberg  
Danny Morgan  
Stuart Nelson  
Jennifer Olsen  
John Peat  
Michael Sommerkorn  
Aaron Stinson  
Ryan Taylor  
Joshua Tolman  
Jody Walsh  
Charlie White

# 2023



## WINS AND RECOGNITION

- **Visits and program participation** at recreation centers **exceeded all previous years**
- Completed more than 14 miles of **multi-user trails at Butterfield Trailhead Regional Park** in Butterfield Canyon, a partnership with Rio Tinto Kennecott and the Bureau of Land Management
- **Record-breaking golf** participation resulting in a \$11 million revenue
- Partnered with **Tree Utah** and 891 volunteers to **plant 465 trees at 11 parks**, Wheeler Historic Farm, and other locations
- Installation of **accessible boat ramp** at Pioneer Crossing Regional Park
- Hosted indoor **adaptive archery** programs; and provided **adaptive equipment and lessons** to golfers with disabilities
- Promoted health, wellness, community, and teamwork by offering many **affordable programs** like Junior Jazz, Learn to Skate, softball, skiing, and snowboarding to youth





# WINS AND RECOGNITION

- Equipped thousands of community members, of all ages, with a **life-saving skill: the ability to swim**. Kept people swimming in our outdoor pools throughout the summer by modifying and standardizing hours
- Provided skill development, a sense of belonging, and a place for youth to earn money by **hiring thousands of high-school and college-aged seasonal, temporary employees** at golf courses, recreation centers, parks, ice centers, and Wheeler Farm
- Utilized ARPA and TI money to begin to replace outdated irrigation systems at several facilities and to switch grass athletic fields in Murray to **three synthetic turf fields**—efforts that will garner cost savings and water conservation
- Completed two bridges at 900 W and the Jordan River that connects **Parley's Trail** from east to west across the valley, which supports state, county, and city **trail connectivity** goals
- Completely full rosters for our **Junior Golf** program
- Record number of **learn-to-skate** enrollments
- Increased **community engagement** through monthly emails, active online/social media presence, ongoing surveys specific to user experience, and outreach events



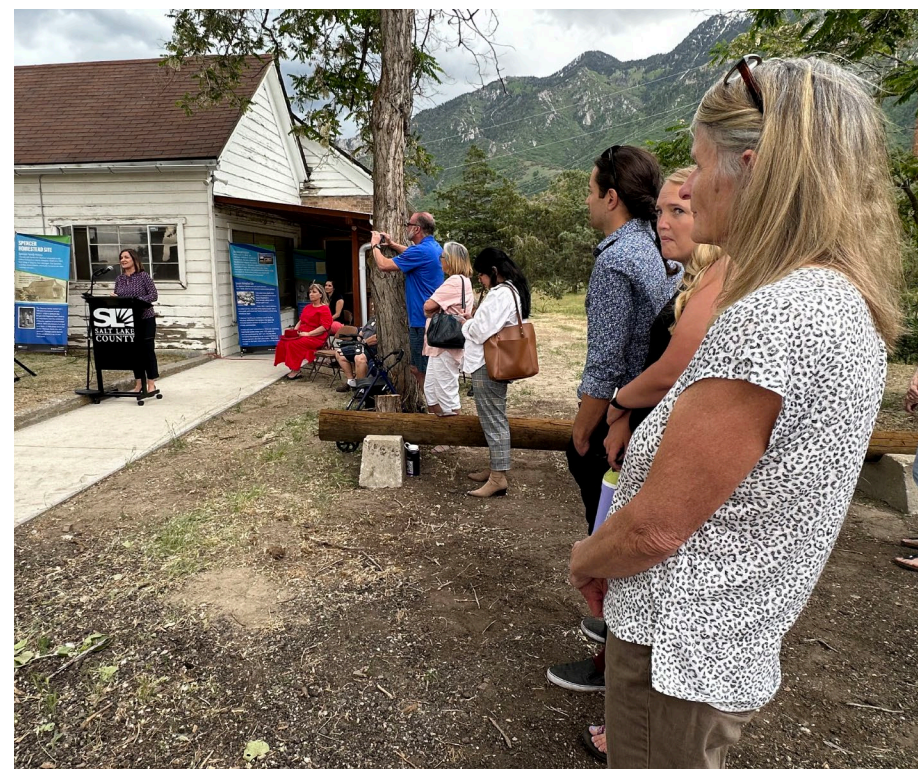
# WINS AND RECOGNITION

- Partnership with Larry H. & Gail Miller Foundation to renovate and rename the softball complex at Valley Regional Park in honor of the late Larry Miller: **Larry H. Miller Softball Complex at Valley Regional Park**. Cast members from “**The Sandlot**” participated in the event
- Installation of **Calle futsal court** at Sugar House Park
- Increased public’s awareness around some parks being designed for utilization as **detention basins** to help **prevent flooding**
- Dedicated the 130-year-old Spencer Homestead, in Dimple Dell Regional Park, to the **National Register of Historic Places**
- Grand opening of **Bingham Creek Regional Park**; at 160 acres when completed, will be the largest regional park in Salt Lake County



## In addition to these wins, Salt Lake County Parks and Recreation received the following recognition:

- **ENR Mountain States 2023 Best Projects: Award of Merit Small Project** for the Wheeler Historic Farm Outdoor Education Center. ajc architects created a thoughtful design that showcases the beauty of Wheeler Historic Farm.
- **2023 Utah Professional Golf Association (PGA) Awards: Dustin Pimm, Assistant Golf Professional of the Year at Mountain View Golf Course.** Each year the Utah Section PGA recognizes individuals who go above and beyond in Utah's golf community.
- **Salt Lake City Weekly Best of Utah 2023:** Best Urban/City Bike Trail (#1) and Best Running Trail (#3), Jordan River Parkway; Best Municipal Park (#3) Sugar House Park; Best Disc Golf Course (#3) Creekside Park
- The **Utah Chapter of the American Society of Landscape Architects** awarded Magna Regional Park for going beyond expectations for the 7 Principles of Inclusive Play. It was highlighted in the Landscape Architecture and Specifier News Playgrounds issue. The park also won in 2023 an **Achievement Award from the National Association of Counties** for parks and recreation.
- **Utah Recreation and Parks Association – Outstanding Professional – Aquatics** to Lynn Riches, for his exemplary commitment and outstanding service in aquatics.
- **Spencer Homestead**—a 130-year-old historic house and homestead site in Dimple Dell Regional Park—was added to the **National Register of Historic Places** because of the site's significance as a “rare example of a late 19th-century Salt Lake Valley homestead and farm. Few settlement-era homes in the area have the surrounding landscape intact with remnants of farming and orchard areas.”



# BOARDS & LEADERSHIP

Our dedicated board members support us throughout the year and continue to provide valuable insight specific to indoor and outdoor recreation, as well as to open space opportunities across the valley.

## PARKS & RECREATION ADVISORY BOARD

Connie Burgess	Chris Hill	Danny Schoenfeld
Jaren Cooper	Carl Fisher	Soren Simonsen
Jerry Cordova-Ong	Robynn Masters	John Warnas
Lisa Dean	Mont Millerberg	Lynette Wendel
Bryce Dunford	Nate Salazar	

## DIMPLE DELL REGIONAL PARK ADVISORY BOARD

Paddrick Flagherty	Emily Montgomery	Jesse Solomon
Lori Haglund	Marc Perry	Nikki Wyman
Nancy Hobbs Orme	Will Radford	Patrick Weber
Patrick Leary	Becky Ross	
Robyn MacDuff	Randall Seltz	

## SUGAR HOUSE PARK AUTHORITY

Roxanne Christensen	Toby Hazelbake	Holly Nichols
Siv Ghaffari	Richard Layman	Jackie Rosen
Kaila Grafeman	Patrick Leary	Taylor Weavil

## BINGHAM CREEK REGIONAL PARK AUTHORITY

Colby Hill	Angela McGuire	Wayne Johnson
Martin Jensen	Wendy Thomas	
Patrick Leary	Don Tingey	

## OPEN SPACE TRUST FUND ADVISORY COMMITTEE

Nate Blouin	Bennion Gardner	Rhetta McIff
Carrie Butler	Deborah Gatrell	Sarah Reale
Benjamin Cook	Angela Gong	Kael Weston

## SALT LAKE COUNTY MAYOR

Jenny Wilson

## SALT LAKE COUNTY COUNCIL

David Alvord, *District 2*  
Jim Bradley, *At Large C*  
Arlyn Bradshaw, *District 1*  
Sheldon Stewart, *District 5*  
Laurie Stringham, *At Large A*  
Ann Granato, *District 4*  
Aimee Winder-Newton, *District 3*  
Suzanne Harrison, *At Large B*  
Dea Theodore, *District 6*

## COMMUNITY SERVICES

Robin Chalhoub, *Director*  
Joey McNamee, *Associate Director*

## PARKS & RECREATION

*Division Director*  
Martin Jensen

*Associate Director of Administration and Finance*  
Brent Laulusa

*Associate Director of Community Engagement*  
Liz Sollis

*Associate Director of Golf*  
Jerry Brewster

*Associate Director of Parks, Trails, and Open Space*  
Patrick Leary

*Associate Director of Planning & Development*  
Walt Gilmore

*Associate Director of Recreation*  
Doranne Pittz

Improving lives  
through people,  
parks, and play.



[slco.to/parks-rec](http://slco.to/parks-rec)

