

# SOUTHWEST PLANNING DISTRICT

## Community Interest and Opinion Survey: Let your voice be heard today!

**Salt Lake County Parks & Recreation** would like your input to help determine recreational facilities, park, open space, and program priorities for our community. This survey will take approximately 15 minutes to complete. When you are finished, please return your survey in the postage-paid, return-reply envelope. We greatly appreciate your help.

**First, we would like to know your opinions on Salt Lake County parks.**

Q-1 Have you or members of your household visited Salt Lake County parks during the past year? (Circle your answer.)

N=488            89% YES  
                      11% NO (SKIP TO QUESTION Q-3.)

Q-2 If YES, how would you rate the physical conditions overall for parks you visited? (Circle answer.)

N=434            23% EXCELLENT  
                      65% GOOD  
                      11% FAIR  
                      1% POOR

Q-3 Are there parks within 10-15 minutes walking distance of your residence? (Circle answer.)

N=478            72% YES  
                      28% NO

Q-4 How do you travel to parks and recreation facilities? (Circle all that apply.)

N=490            2% I DO NOT TRAVEL TO PARKS AND RECREATION FACILITIES  
                      87% CAR  
                      27% BIKE  
                      55% WALK  
                      1% PUBLIC TRANSPORTATION  
                      1% OTHER (Please list \_\_\_\_\_)

Q-5 Listed below are some park amenities. Please indicate whether you feel that each amenity should NOT be a priority, should be given a LOW priority, MEDIUM priority, or HIGH priority in Salt Lake County parks.

Amenity number	Park Amenity	How much priority, if any, should each amenity have in Salt Lake County parks? (Please circle your answer.)			
N=482    1	Lawn area, open un-programmed . . . . .	1% NOT	5% LOW	38% MEDIUM	56% HIGH
N=488    2	Group pavilion/picnic area. . . . .	1% NOT	6% LOW	39% MEDIUM	54% HIGH
N=487    3	Children’s playground (traditional) . . . . .	1% NOT	3% LOW	27% MEDIUM	69% HIGH
N=473    4	Children’s playground (nature, etc.) . . . . .	2% NOT	12% LOW	42% MEDIUM	44% HIGH
N=482    5	Horseshoe pit. . . . .	26% NOT	54% LOW	18% MEDIUM	2% HIGH
N=482    6	Skate park. . . . .	20% NOT	41% LOW	32% MEDIUM	7% HIGH
N=480    7	Fishing pond. . . . .	18% NOT	38% LOW	34% MEDIUM	10% HIGH
N=479    8	Disc golf course. . . . .	24% NOT	46% LOW	25% MEDIUM	5% HIGH
N=483    9	Off-leash dog park, fenced. . . . .	23% NOT	31% LOW	27% MEDIUM	19% HIGH
N=481    10	Off-leash dog park, not fenced. . . . .	44% NOT	34% LOW	15% MEDIUM	7% HIGH
N=483    11	Access to facilities for the disabled. . . . .	2% NOT	9% LOW	38% MEDIUM	51% HIGH
N=78     12	Other _____	6% NOT	LOW	13% MEDIUM	81% HIGH

Q-6 Of the amenities listed in Q-5, which do you feel are most important to your household? (Please write the amenity number from Q-5 in the appropriate box.)

Most important N=468

35% Children’s playground (traditional)  
 30% Lawn area, open and un-programmed  
 14% Group pavilion/picnic area

Second most important N=463

30% Group pavilion/picnic area  
 21% Children’s playground (traditional)  
 18% Lawn area, open and un-programmed

Third most important N=463

23% Lawn area, open and un-programmed  
 22% Group pavilion/picnic area  
 20% Children’s playground (traditional)

Q-7 Listed below are some sports amenities. Please indicate whether you feel that each amenity should NOT be a priority, should be given a LOW priority, MEDIUM priority, or HIGH priority in Salt Lake County.

Amenity number	Sports Amenity	How much priority, if any, should each sport amenity have in Salt Lake County? (Please circle your answer.)			
N=477	1 Soccer / Football / Rugby field. . . . .	3% NOT	12% LOW	47% MEDIUM	38% HIGH
N=475	2 Lacrosse / Field hockey field . . . . .	11% NOT	40% LOW	37% MEDIUM	12% HIGH
N=481	3 Little league baseball diamond . . . . .	5% NOT	15% LOW	49% MEDIUM	31% HIGH
N=473	4 Babe Ruth baseball diamond. . . . .	7% NOT	24% LOW	46% MEDIUM	23% HIGH
N=471	5 Softball diamond. . . . .	4% NOT	18% LOW	50% MEDIUM	28% HIGH
N=466	6 Backstop, for pickup baseball games . . .	7% NOT	28% LOW	47% MEDIUM	18% HIGH
N=476	7 Basketball court, outdoor . . . . .	2% NOT	12% LOW	50% MEDIUM	36% HIGH
N=477	8 Sand volleyball court. . . . .	5% NOT	30% LOW	45% MEDIUM	20% HIGH
N=477	9 Tennis court, outdoor . . . . .	6% NOT	21% LOW	45% MEDIUM	28% HIGH
N=476	10 Golf course. . . . .	24% NOT	31% LOW	26% MEDIUM	19% HIGH
N=40	11 Other _____	23% NOT	5% LOW	10% MEDIUM	62% HIGH

Q-8 Of the amenities listed in Q-7, which do you feel are most important to your household? (Please write the amenity number from Q-7 in the appropriate box.)

Most important N=448  
 31% Soccer/Football/Rugby field  
 12% Basketball court, outdoor  
 12% Little league baseball diamond

Second most important N=436  
 16% Little league baseball diamond  
 16% Basketball court, outdoor  
 14% Soccer/Football/Rugby field

Third most important N=424  
 21% Basketball court, outdoor  
 15% Soccer/Football/Rugby field  
 13% Little league baseball diamond

Q-9 Listed below are some more recreation amenities. Please indicate whether you feel that each amenity should NOT be a priority, should be given a LOW priority, MEDIUM priority, or HIGH priority in Salt Lake County.

Amenity number	Recreation Amenity	How much priority, if any, should each amenity have in Salt Lake County? (Please circle your answer.)			
N=480	1 Trail, walking/running/bike. . . . .	1% NOT	2% LOW	17% MEDIUM	80% HIGH
N=475	2 Trail, horse, equestrian . . . . .	20% NOT	46% LOW	24% MEDIUM	10% HIGH
N=479	3 Natural areas / wildlife habitat . . . . .	3% NOT	22% LOW	38% MEDIUM	37% HIGH
N=474	4 Jordan River water trail (kayaking, etc.)	5% NOT	27% LOW	43% MEDIUM	26% HIGH
N=473	5 Nature education facilities. . . . .	5% NOT	31% LOW	47% MEDIUM	17% HIGH
N=476	6 Community garden. . . . .	9% NOT	37% LOW	37% MEDIUM	17% HIGH
N=482	7 Indoor exercise / fitness / aerobics. . . . .	4% NOT	14% LOW	31% MEDIUM	51% HIGH
N=473	8 Indoor small events space (parties, etc.)	9% NOT	37% LOW	38% MEDIUM	16% HIGH
N=474	9 Gymnasium. . . . .	5% NOT	24% LOW	43% MEDIUM	28% HIGH
N=473	10 Racquetball/squash courts. . . . .	8% NOT	34% LOW	40% MEDIUM	18% HIGH
N=478	11 Swimming pool, indoor. . . . .	3% NOT	7% LOW	30% MEDIUM	60% HIGH
N=478	12 Swimming pool, outdoor. . . . .	4% NOT	11% LOW	33% MEDIUM	52% HIGH
N=477	13 Water play splash pad. . . . .	7% NOT	19% LOW	31% MEDIUM	43% HIGH
N=472	14 Outdoor events space. . . . .	3% NOT	14% LOW	52% MEDIUM	31% HIGH
N=26	15 Other _____	23% NOT	4% LOW	31% MEDIUM	42% HIGH

Q-10 Of the amenities listed in Q-9, which do you feel are most important to your household? (Please write the amenity number from Q-9 in the appropriate box.)

Most important N=468  
 48% Trail, walking/running/bike  
 15% Swimming pool, indoor  
 10% Indoor exercise/fitness/aerobics

Second most important N=468  
 18% Trail, walking/running/bike  
 15% Swimming pool, indoor  
 14% Swimming pool, outdoor  
 14% Indoor exercise/fitness/aerobics

Third most important N=465  
 17% Swimming pool, outdoor  
 13% Swimming pool, outdoor  
 12% Trail, walking/running/bike

**Next we would like to know your opinions on youth recreation programs.**

Q-11 Listed below are youth programs. Please indicate whether you feel that each program should NOT be a priority, should be given a LOW priority, MEDIUM priority, or HIGH priority in the Salt Lake County Parks and Recreation Department.

Program number	Recreation Program	How much priority, if any, should each program have in the Salt Lake County Parks and Recreation Department? (Please circle your answer.)			
N=485	1 Youth Learn To Swim. . . . .	1% NOT	4% LOW	25% MEDIUM	70% HIGH
N=480	2 Youth athletics . . . . .	1% NOT	4% LOW	35% MEDIUM	60% HIGH
N=479	3 Youth fitness and wellness . . . . .	2% NOT	8% LOW	39% MEDIUM	51% HIGH
N=480	4 Youth gymnastic. . . . .	4% NOT	24% LOW	47% MEDIUM	25% HIGH
N=479	5 Youth art, dance, performing arts . . . . .	3% NOT	19% LOW	47% MEDIUM	31% HIGH
N=477	6 Youth scholarships. . . . .	5% NOT	19% LOW	37% MEDIUM	39% HIGH
N=477	7 Youth learn to ice skate. . . . .	6% NOT	34% LOW	41% MEDIUM	19% HIGH
N=477	8 Programs for teens. . . . .	2% NOT	9% LOW	43% MEDIUM	46% HIGH
N= 25	9 Other_____	24% NOT	LOW	20% MEDIUM	56% HIGH

Q-12 Of the programs listed in Q-11 which do you feel are most important to your household? (Please write the program number from Q-11 in the appropriate box.)

<p>Most important N=455</p> <p>51% Youth learn to swim</p> <p>22% Youth athletics</p> <p>10% Youth fitness and wellness</p>	<p>Second most important N=448</p> <p>30% Youth Athletics</p> <p>24% Youth fitness and wellness</p> <p>17% Youth learn to swim</p>	<p>Third most important N=439</p> <p>24% Youth fitness and wellness</p> <p>17% Programs for teens</p> <p>16% Youth Athletics</p>
---	--	--

**Now we would like to know your opinions on adult recreation programs.**

Q-13 Listed below are adult programs. Please indicate whether you feel that each program should NOT be a priority, should be given a LOW priority, MEDIUM priority, or HIGH priority in the Salt Lake County Parks and Recreation Department.

Program number	Recreation Program	How much priority, if any, should each program have in the Salt Lake County Parks and Recreation Department? (Please circle your answer.)			
N=474	1 Adult learn to swim. . . . .	12% NOT	34% LOW	37% MEDIUM	17% HIGH
N=471	2 Adult learn to ice skate. . . . .	23% NOT	50% LOW	22% MEDIUM	5% HIGH
N=476	3 Adult art, dance, performing arts . . . . .	11% NOT	36% LOW	36% MEDIUM	17% HIGH
N=470	4 Adult organized athletics. . . . .	5% NOT	24% LOW	46% MEDIUM	25% HIGH
N=480	5 Adult continuing education. . . . .	3% NOT	10% LOW	34% MEDIUM	53% HIGH
N=481	6 Senior fitness . . . . .	2% NOT	9% LOW	38% MEDIUM	51% HIGH
N=27	7 Other_____	37% NOT	LOW	26% MEDIUM	37% HIGH

Q-14 Of the programs listed in Q-13 which do you feel are most important to your household? (Please write the program number from Q-13 in the appropriate box.)

<p>Most important N=457</p> <p>31% Adult continuing education</p> <p>25% Senior fitness</p> <p>22% Adult organized athletics</p>	<p>Second most important N=442</p> <p>31% Adult continuing education</p> <p>25% Senior fitness</p> <p>17% Adult organized athletics</p>	<p>Third most important N=425</p> <p>23% Senior fitness</p> <p>22% Adult art, dance, performing arts</p> <p>19% Adult continuing education</p>
--	---	--

**Next we would like to know your opinions on other recreation services and programs.**

Q-15 Listed below are services. Please indicate whether you feel that each service should NOT be a priority, should be given a LOW priority, MEDIUM priority, or HIGH priority in the Salt Lake County Parks and Recreation Department.

Program number	Service	How much priority, if any, should each service have in the Salt Lake County Parks and Recreation Department? (Please circle your answer.)			
N=477	1 Daycare . . . . .	16% NOT	25% LOW	34% MEDIUM	25% HIGH
N=474	2 Drop in childcare. . . . .	15% NOT	25% LOW	34% MEDIUM	26% HIGH
N=481	3 Before school programs. . . . .	12% NOT	39% LOW	30% MEDIUM	19% HIGH
N=476	4 After school programs . . . . .	4% NOT	12% LOW	39% MEDIUM	45% HIGH
N=471	5 School break (fall, winter, etc.) . . . . .	7% NOT	21% LOW	39% MEDIUM	33% HIGH
N=474	6 Tennis lessons and leagues . . . . .	9% NOT	37% LOW	39% MEDIUM	15% HIGH
N=476	7 Water fitness. . . . .	3% NOT	22% LOW	48% MEDIUM	27% HIGH
N=477	8 Programs for people with disabilities . . . . .	2% NOT	11% LOW	47% MEDIUM	40% HIGH
N=474	9 Community events (Easter egg hunts, holiday celebrations, Halloween carnivals). . .	7% NOT	26% LOW	37% MEDIUM	30% HIGH
N=470	10 Athletic special events (5k races, etc.) . . . . .	3% NOT	26% LOW	44% MEDIUM	27% HIGH
N=472	11 Nature/environmental education . . . . .	4% NOT	32% LOW	46% MEDIUM	18% HIGH
N=480	12 Farmers markets. . . . .	2% NOT	12% LOW	37% MEDIUM	49% HIGH
N=477	13 Programs w/your pets (dog swims, etc.) . . . .	30% NOT	40% LOW	19% MEDIUM	11% HIGH
N=474	14 Volunteer opportunities. . . . .	1% NOT	16% LOW	52% MEDIUM	31% HIGH
N=476	15 Open access computer labs. . . . .	11% NOT	32% LOW	36% MEDIUM	20% HIGH
N=476	16 Long term fitness challenges. . . . .	6% NOT	25% LOW	45% MEDIUM	24% HIGH
N=17	17 Other _____	18% NOT	LOW	12% MEDIUM	70% HIGH
N=10	18 Other _____	30% NOT	LOW	10% MEDIUM	60% HIGH

Q-16 Of the services listed in Q-15 which do you feel are most important to your household? (Please write the program number from Q-15 in the appropriate box.)

<p>Most important N=463</p> <p>16% Farmers market</p> <p>15% After-school programs</p> <p>12% Community events</p>	<p>Second most important N=456</p> <p>14% Farmers market</p> <p>12% After-school programs</p> <p>10% Community events</p>	<p>Third most important N=443</p> <p>16% Farmers market</p> <p>10% Volunteer Opportunities</p> <p>10% After-school programs</p>
--	---	---

**Next, we want to ask you about recreational programs or special events provided by Salt Lake County Parks and Recreation.**

Q-17 Have you or other members of your household participated in recreational programs or special events such as 5K races, holiday events (Easter Egg Hunts, Trunk or Treat, etc.) offered by Salt Lake County Parks & Recreation during the past 12 months?  
 N=488  
 36% YES  
 64% NO (SKIP TO QUESTION Q-20.)

Q-18 If YES, approximately how many different Salt Lake County Parks & Recreation recreational programs or special events have you or members of your household participated in over the past 12 months?  
 N=179  
 32% ONE PROGRAM  
 50% TWO OR THREE PROGRAMS  
 16% FOUR TO SIX PROGRAMS  
 1% SEVEN TO TEN PROGRAMS  
 1% MORE THAN TEN PROGRAMS

Q-19 How do you rate the overall quality of the programs or events in which you and members of your household have N=197 participated?

- 30% EXCELLENT
- 62% GOOD
- 7% FAIR
- 1% POOR

Q-20 How have you learned about the programs or services offered by Salt Lake County Parks & Recreation? (Circle all that apply.)

N=474

- |                                       |  |
|---------------------------------------|--|
| 36% NEWSPAPER                         | 20% RECREATION BROCHURE/PROGRAM GUIDE            |
| 18% SALT LAKE COUNTY WEBSITE          | 4% CONVERSATIONS WITH PARKS AND RECREATION STAFF |
| 36% SCHOOLS                           | 5% CABLE TELEVISION                              |
| 13% COUNTY INFORMATION                | 27% COMMUNITY/NEIGHBORHOOD NEWSLETTERS           |
| 39% PROGRAM FLIERS                    | 6% SOCIAL MEDIA(FACEBOOK, TWITTER, ETC.)         |
| 42% FRIENDS/NEIGHBORS                 | 6% INTERNET (If so what Site?_____)              |
| 21% RECREATION CENTER BULLETIN BOARDS | 6% OTHER_____                                    |
| 11% RADIO                             |  |

**We will now ask some questions on potential actions for Salt Lake County Parks and Recreation.**

Q-21 Following is a list of POTENTIAL actions that Salt Lake County Parks and Recreation could take to improve recreation, parks, and community activities in Salt Lake County. For each potential action, please indicate if that should NOT be a priority, should be given a LOW priority, MEDIUM priority, or HIGH priority

Action number	Existing Parks and Recreation Facilities	How much priority, if any, should each action have in the Salt Lake County Parks and Recreation Department?			
N=473	1 Higher level of park maintenance. . . . .	3% NOT	16% LOW	46% MEDIUM	35% HIGH
N=466	2 Higher level of building maintenance. . . . .	4% NOT	19% LOW	52% MEDIUM	25% HIGH
N=467	3 Higher level of sports field maintenance. . . . .	5% NOT	21% LOW	49% MEDIUM	25% HIGH
N=463	4 Higher level of golf course maintenance. . . . .	18% NOT	41% LOW	31% MEDIUM	10% HIGH
N=466	5 Higher level of natural area maintenance. . . . .	6% NOT	26% LOW	45% MEDIUM	23% HIGH
N=474	6 Improve regional trails (Jordan River, Bonneville Shoreline, etc) . . . . .	3% NOT	16% LOW	40% MEDIUM	41% HIGH
N=468	7 Light more sports fields. . . . .	12% NOT	32% LOW	39% MEDIUM	18% HIGH
N=473	8 Convert natural turf grass sports fields to synthetic turf. . . . .	47% NOT	34% LOW	14% MEDIUM	5% HIGH
<b>New Parks and Recreation Facilities</b>					
N=474	9 Purchase land for regional trails. . . . .	8% NOT	22% LOW	36% MEDIUM	34% HIGH
N=477	10 Purchase land to preserve natural areas, open space. . . . .	8% NOT	19% LOW	37% MEDIUM	36% HIGH
N=473	11 Purchase land for parks. . . . .	4% NOT	15% LOW	41% MEDIUM	40% HIGH
N=462	12 Build new passive use parks. . . . .	8% NOT	34% LOW	43% MEDIUM	15% HIGH
N=474	13 Build new athletic fields. . . . .	8% NOT	37% LOW	39% MEDIUM	16% HIGH
N=477	14 Build new swimming pools. . . . .	6% NOT	23% LOW	37% MEDIUM	34% HIGH
N=481	15 Build new walking, hiking and biking trails. . . . .	2% NOT	10% LOW	35% MEDIUM	53% HIGH
N=469	16 Build new outdoor special event venues. . . . .	10% NOT	40% LOW	35% MEDIUM	15% HIGH

Q-22 Of the actions listed in Q-21 which is most important to pay for with tax dollars? (Please write the action number from Q-21 in the appropriate box.)

Most important N=464  
 19% Build new walking, hiking and biking trails  
 18% Higher level of park maintenance  
 12% Improve regional trails (Jordan River, Bonneville Shoreline, etc.)

Second most important N=458  
 16% Build new walking, hiking and biking trails  
 10% Improve regional trails (Jordan River, Bonneville Shoreline, etc.)  
 9% Purchase land to preserve natural areas, open space

Third most important N=447  
 14% Build new walking, hiking and biking trails  
 11% Purchase land for regional trails  
 9% Purchase land for parks

Q-23 Listed below are some activities and recreation programs. Please indicate whether you feel the costs to run each program should be paid from TAXES, a COMBINATION of taxes and user fees, or only with user FEES.

Recreation Program		How should the costs to run this program be paid? (Please circle your answer.)		
N=471	1 Youth fitness and wellness . . . . .	8% TAXES	52% COMBINATION	40% FEES
N=476	2 Youth athletics . . . . .	3% TAXES	40% COMBINATION	57% FEES
N=473	3 Youth art, dance, performing arts . . . . .	2% TAXES	32% COMBINATION	66% FEES
N=470	4 Youth scholarship programs. . . . .	13% TAXES	53% COMBINATION	34% FEES
N=474	5 Programs for teens. . . . .	9% TAXES	53% COMBINATION	38% FEES
N=477	6 Before and after school programs. . . . .	13% TAXES	48% COMBINATION	39% FEES
N=478	7 School break programs (fall, summer, etc.). . . . .	6% TAXES	38% COMBINATION	56% FEES
N=471	8 Adult organized athletics. . . . .	1% TAXES	16% COMBINATION	83% FEES
N=473	9 Adult art, dance, performing arts. . . . .	1% TAXES	15% COMBINATION	84% FEES
N=476	10 Adult continuing education. . . . .	3% TAXES	33% COMBINATION	64% FEES
N=475	11 Senior fitness . . . . .	12% TAXES	50% COMBINATION	38% FEES
N=474	12 Community events (Easter egg hunts, holiday celebrations, Halloween carnivals, etc.). . . . .	22% TAXES	45% COMBINATION	33% FEES
N=475	13 Nature programs/environmental education. . . . .	17% TAXES	45% COMBINATION	38% FEES
N=475	14 Open access computer labs. . . . .	14% TAXES	34% COMBINATION	52% FEES
N=475	15 Drop in childcare. . . . .	2% TAXES	25% COMBINATION	73% FEES
N=474	16 Programs for people with disabilities. . . . .	35% TAXES	50% COMBINATION	15% FEES
N=473	17 Indoor space for small events (parties, meetings)	3% TAXES	24% COMBINATION	73% FEES
N=473	18 Athletic special events (5k races, etc). . . . .	3% TAXES	27% COMBINATION	70% FEES
N=469	19 Farmers markets. . . . .	10% TAXES	40% COMBINATION	50% FEES
N=25	20 _____	12% TAXES	32% COMBINATION	56% FEES

Q-24 Listed below are reasons that may **prevent** people from using Salt Lake County Parks & Recreation facilities and programs. (Please circle the numbers of ALL reasons that **prevent** you or other members of your household from using Salt Lake County Parks & Recreation facilities and programs.)

- |   |  |
|---|--|
| 19% Facilities are not well maintained      | 14% Program or facility not offered            |
| 17% Facilities lack right equipment         | 6% Security is insufficient                    |
| 14% Lack of quality programs                | 29% Too far from our residence                 |
| 21% Class full                              | 18% Program times not convenient               |
| 12% Use facilities in other cities/counties | 24% Fees are too high                          |
| 9% Poor customer service by staff           | 16% Do not know locations of facilities        |
| 20% Not Interested                          | 2% Not accessible for people with disabilities |
| 45% I do not know what is being offered     | 10% Lack of parking near facilities & parks    |
| 12% Operating hours not convenient          | 11% Facilities are often not available         |
| 7% Registration for programs difficult      | 7% _____                                       |

Q-25 Listed below are some services of the Salt Lake County Parks and Recreation Department. Please indicate the extent you are satisfied or dissatisfied with each of the following services by using the scale below:

Services	Very Satisfied	Satisfied	Undecided or unsure	Dissatisfied	Very Dissatisfied
N=464 1 Overall value your household receives from Salt Lake County Parks & Recreation. . . . .	12% VS	58% S	24% U	4% D	2% VDIS
N=471 2 Maintenance of parks. . . . .	14% VS	65% S	13% U	7% D	1% VDIS
N=468 3 Number of parks. . . . .	10% VS	52% S	25% U	12% D	1% VDIS
N=467 4 Security in parks. . . . .	5% VS	31% S	50% U	12% D	2% VDIS
N=466 5 Availability of information about programs and facilities. . . . .	6% VS	37% S	34% U	18% D	5% VDIS
N=463 6 Quality of programs for families with children. . . . .	10% VS	46% S	38% U	5% D	1% VDIS
N=461 7 Quality of programs for adults . . . . .	5% VS	38% S	49% U	7% D	1% VDIS
N=461 8 User friendliness of Parks and Recreation website . . . . .	5% VS	36% S	52% U	6% D	1% VDIS
N=458 9 Programs for people with disabilities . . . . .	2% VS	18% S	77% U	2% D	1% VDIS
N=461 10 Variety of programs. . . . .	6% VS	46% S	40% U	7% D	1% VDIS
N=464 11 Ease of registering for classes /programs. . . . .	8% VS	44% S	42% U	5% D	1% VDIS
N=464 12 Ease of renting/reserving a facility. . . . .	6% VS	33% S	56% U	4% D	1% VDIS
N=465 13 Fees charged for programs/facilities . . . . .	6% VS	44% S	39% U	8% D	3% VDIS
N=464 14 Overall level of customer service . . . . .	8% VS	53% S	35% U	3% D	1% VDIS
N=459 15 Drop in childcare programs. . . . .	3% VS	13% S	80% U	3% D	1% VDIS

Q-26 Listed below are **benefits** from having Salt Lake County Parks & Recreation facilities and programs. Please indicate the extent you agree or disagree with each of the following benefits using the scale below:

Statement Number	Benefit	Strongly Agree	Mildly Agree	Undecided or unsure	Mildly Disagree	Strongly Disagree
N=474 1	Improves physical health and wellness	65% SA	28% MA	5% U	1% MD	1% SD
N=474 2	Helps reduce neighborhood crime	31% SA	35% MA	27% U	5% MD	2% SD
N=475 3	Makes Salt Lake County a better place to live	65% SA	29% MA	5% U	1% MD	SD
N=472 4	Preserves open-space	47% SA	36% MA	16% U	1% MD	SD
N=471 5	Protects the environment	35% SA	34% MA	28% U	3% MD	SD
N=468 6	Increases property values in surrounding areas	40% SA	38% MA	19% U	2% MD	1% SD
N=473 7	Improves mental health and reduces stress	49% SA	35% MA	14% U	2% MD	SD
N=470 8	Increases cultural and community interaction	41% SA	36% MA	20% U	3% MD	SD
N=470 9	Attracts new residents	31% SA	34% MA	31% U	4% MD	SD
N=472 10	Attracts new businesses	22% SA	29% MA	43% U	5% MD	1% SD
N=474 11	Protects historical assets of the County	25% SA	33% MA	38% U	3% MD	1% SD
N=474 12	Promotes tourism to the County	20% SA	25% MA	44% U	10% MD	1% SD

Q-27 Of the benefits listed in Q-26 which is most important to your household? (Please write the statement number from Q-26 in the appropriate box.)

<p>Most important N=449</p> <p>58% Improves physical health and wellness</p> <p>15% Makes Salt Lake County a better place to live</p> <p>9% Helps reduce neighborhood crime</p>
---

<p>Second most important N=442</p> <p>25% Makes Salt Lake County a better place to live</p> <p>15% Helps reduce neighborhood Crime</p> <p>13% Improves physical health and wellness</p>
---

<p>Third most important N=437</p> <p>17% Makes Salt Lake County a better place to live</p> <p>15% Improves mental health and Stress</p> <p>14% Increases property values in surrounding areas</p>
---

**We would now like to learn more about recreation organizations you and your household members use.**

Q-28 Please circle ALL the organizations that you and members of your household have used for recreation activities during the last 12 months.

- N=483
- 4% YMCA
  - 48% RELIGIOUS AFFILIATED FACILITY
  - 56% LOCAL SCHOOLS
  - 62% STATE PARKS
  - 12% PRIVATE CLUB (TENNIS, GOLF, ETC.)
  - 33% PRIVATE GYM
  - 5% SPECIAL RECREATION DISTRICT
  - 78% SALT LAKE COUNTY PARKS & RECREATION
  - 56% NATIONAL PARK/NATIONAL FOREST
  - 18% NEIGHBORING COUNTIES
  - 18% HOMEOWNER ASSOCIATION/APARTMENT COMPLEX
  - 1% BOYS AND GIRLS CLUB
  - 6% \_\_\_\_\_

Q-29 Of the organizations listed in Q-28 which organizations were used most by household members ages 11 years or younger during the past 12 months. (Please write in the organization number from Q-28 in the appropriate box or if you have no household members 11 or younger circle that answer.)

<p>Used most N=247</p> <p>34% Salt Lake County Parks and Recreation</p> <p>27% Local Schools</p>
--

<p>Used second most N=236</p> <p>27% Salt Lake County Parks and Recreation</p> <p>23% Local Schools</p>
---

49% No one in household ages 11 years or younger

Q-30 Of the organizations listed in Q-28 which organizations were used most by household members ages 12 to 17 years during the past 12 months. (Please write in the organization number from Q-28 in the appropriate box or if you have no household members ages 12 to 17 years circle that answer.)

<p>Used most N=174</p> <p>31% Local Schools</p> <p>26% Salt Lake County Parks and Recreation</p>
--

<p>Used second most N=155</p> <p>27% Local Schools</p> <p>24% Salt Lake County Parks and Recreation</p>
---

62% No one in household ages 12 to 17 years



Q-31 Of the organizations listed in Q-28 which organizations were used most by household members' ages 18 to 54 years during the past 12 months. (Please write in the organization number from Q-28 in the appropriate box or if you have no household members ages 18 to 54 years circle that answer.)

<p>Used most N=368          32% Salt Lake County Parks and Recreation          17% Private gym</p>	<p>Used second most N=327          25% Salt Lake County Parks and Recreation          19% National Park/National Forrest</p>	<p>23% No one in household ages 18 to 54 years</p>
--	--	--

Q-32 Of the organizations listed in Q-28 which organizations were used most by household members ages 55 and over during the past 12 months. (Please write in the organization number from Q-28 in the appropriate box or if you have no household members ages 55 and over circle that answer.)

<p>Used most N=140          27% Religious affiliated facility          26% Salt Lake County Parks and Recreation</p>	<p>Used second most N=118          28% State Park          24% Salt Lake County Parks and Recreation</p>	<p>64% No one in household ages 55 and over</p>
--	--	---

**Finally, we'd like to ask you a little about your household.**

Q-33 How many years have you lived in Salt Lake County?

N=490

- 5% 1-2 YEARS
- 7% 3-5 YEARS
- 11% 6-10 YEARS
- 18% 11-20 YEARS
- 16% 21-30 YEARS
- 43% MORE THAN 30 YEARS

Q-34 Are you renting, buying, or do you own your own home in Salt Lake County?

N=485

- 4% RENTING
- 35% BUYING
- 61% OWN

Q-35 Which category best describes your age?

N=487

- 2% 18 – 24
- 20% 25 – 34
- 30% 35 – 44
- 21% 45 – 54
- 15% 55 – 64
- 12% 65 OR MORE

Q-36 Please circle the number of persons, including yourself, in your household for each of the following age categories:

	Age Category	Circle the number of persons in your household for each age category					
N=483	1 Ages 5 Younger	68% ZERO	14% 1	15% 2	2% 3	1% 4	5 OR MORE
N=488	2 Ages 6-9	70% ZERO	20% 1	9% 2	1% 3	4	5 OR MORE
N=488	3 Ages 10-14	70% ZERO	18% 1	10% 2	2% 3	4	5 OR MORE
N=488	4 Ages 15-19	75% ZERO	16% 1	8% 2	1% 3	4	5 OR MORE
N=488	5 Ages 20-24	84% ZERO	11% 1	4% 2	1% 3	4	5 OR MORE
N=488	6 Ages 25-34	71% ZERO	10% 1	18% 2	1% 3	4	5 OR MORE
N=488	7 Ages 35-44	62% ZERO	16% 1	22% 2	3	4	5 OR MORE
N=488	8 Ages 45-54	75% ZERO	11% 1	14% 2	3	4	5 OR MORE
N=488	9 Ages 55-64	78% ZERO	11% 1	11% 2	3	4	5 OR MORE
N=488	10 Ages 65 or more	84% ZERO	8% 1	8% 2	3	4	5 OR MORE

Q-37 Are you male or female?

N=485

37% MALE  
63% FEMALE

Q-38 Which of the following categories best describes your racial or ethnic identification? (Circle one answer)

N=476

AFRICAN AMERICAN/BLACK  
1% ASIAN  
PACIFIC ISLANDER  
4% HISPANIC/LATIN  
94% WHITE/CAUCASIAN  
NATIVE AMERICAN  
1% OTHER \_\_\_\_\_

Q-39 Do you or someone in your household have a cognitive or physical disability?

N=488

11% YES  
89% NO

Q-40 Are you a dog owner?

N=490

47% YES  
53% NO

Q-41 What is your zip code? \_\_\_\_\_

	City	Frequency	Valid Percent
84006	Bingham Canyon	42	8.6
84065	Riverton	91	18.5
84081	West Jordan	75	15.3
84084	West Jordan	50	10.2

	City	Frequency	Valid Percent
84088	West Jordan	42	8.6
84095	South Jordan	55	11.2
84096	Herriman	136	27.7
Total		491	100.0

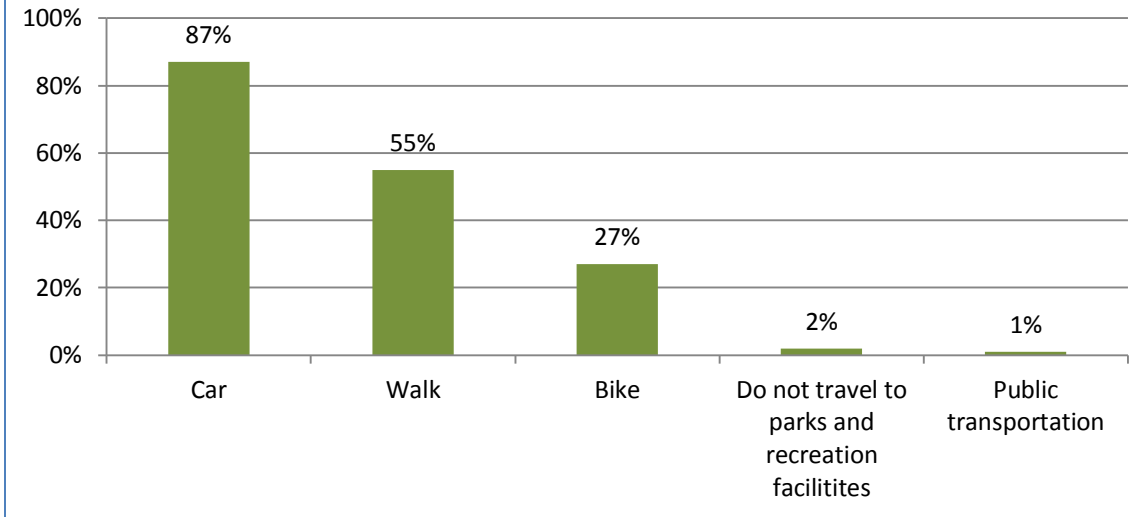
Your comments will be appreciated, either here or in a separate envelope.

Thank you for your help.

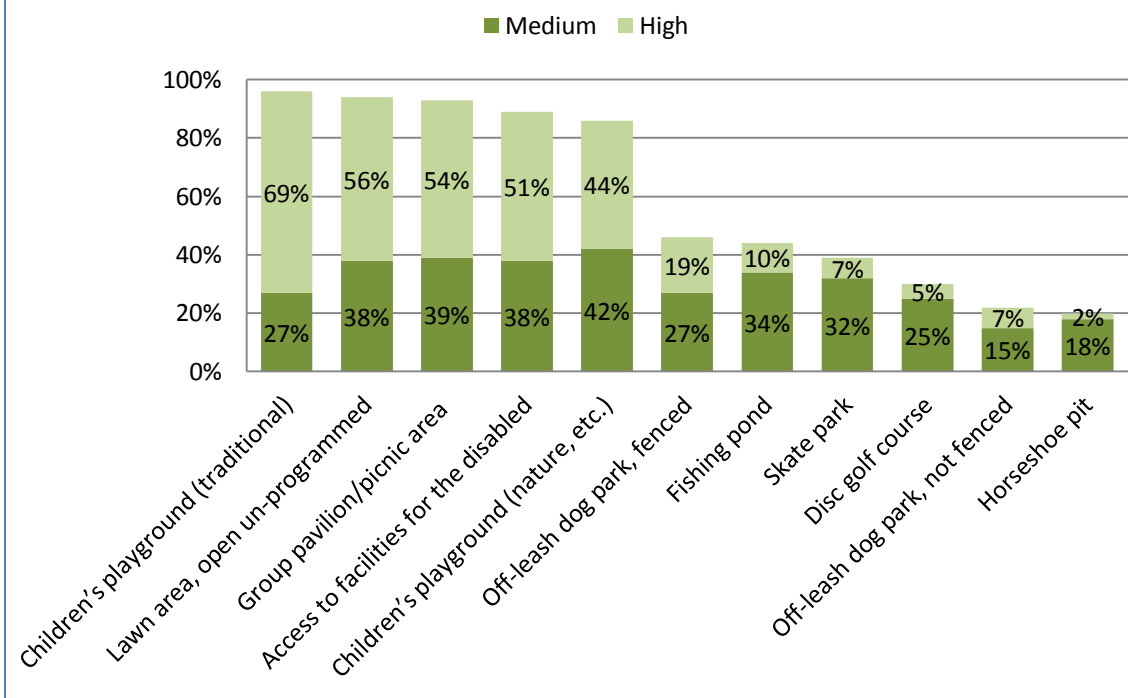
***Please return your completed questionnaire in the enclosed return-reply envelope to:***

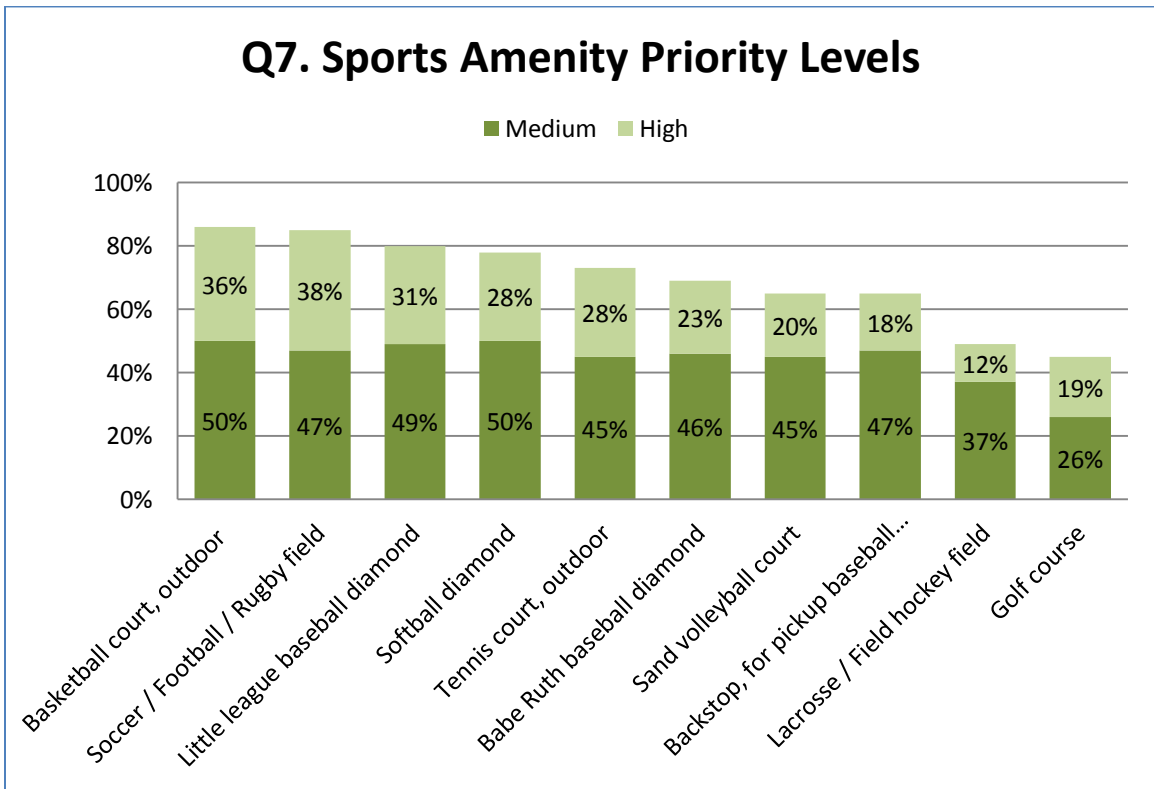
Salt Lake County Parks & Recreation  
 Attn: Martin Jensen S-4700  
 PO BOX 27637  
 Salt Lake City, UT 84127-9914

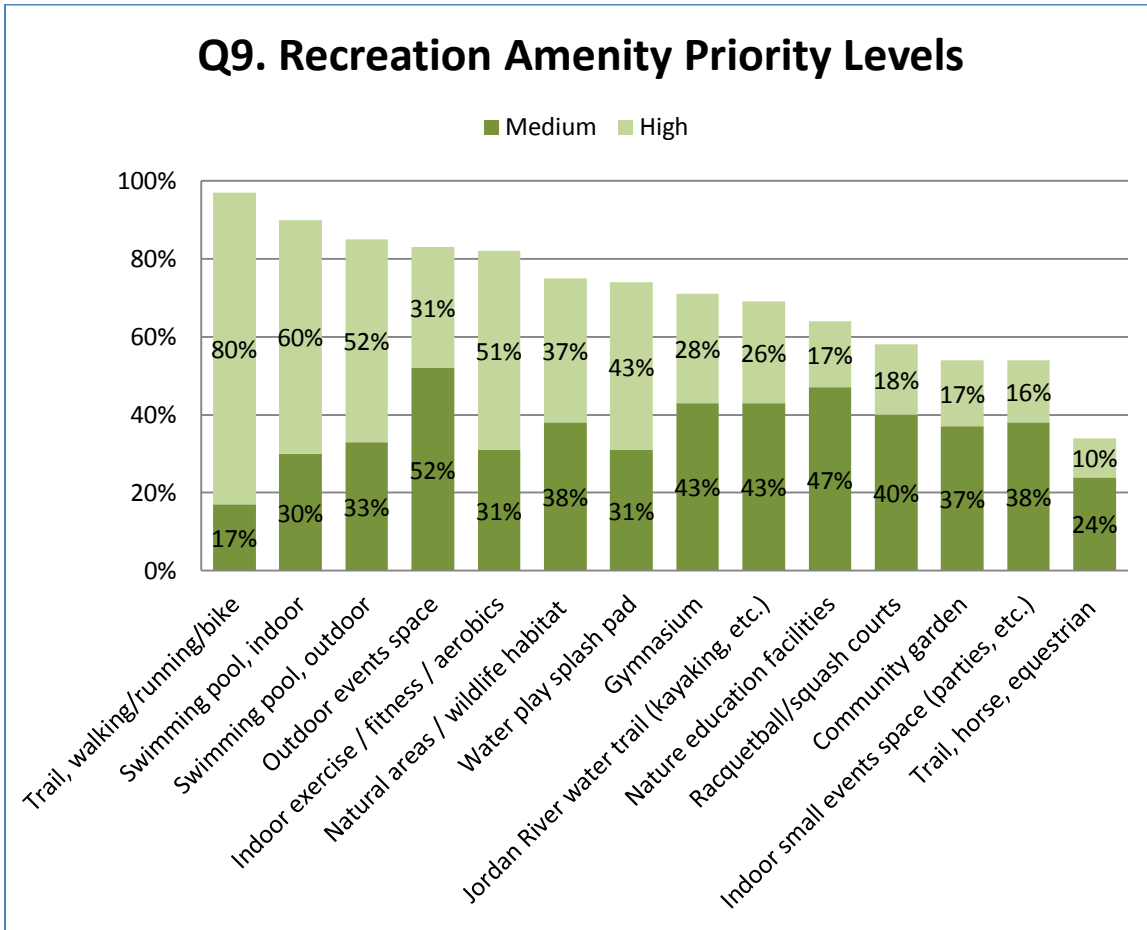
### Q4. How do you travel to parks and recreation facilities?

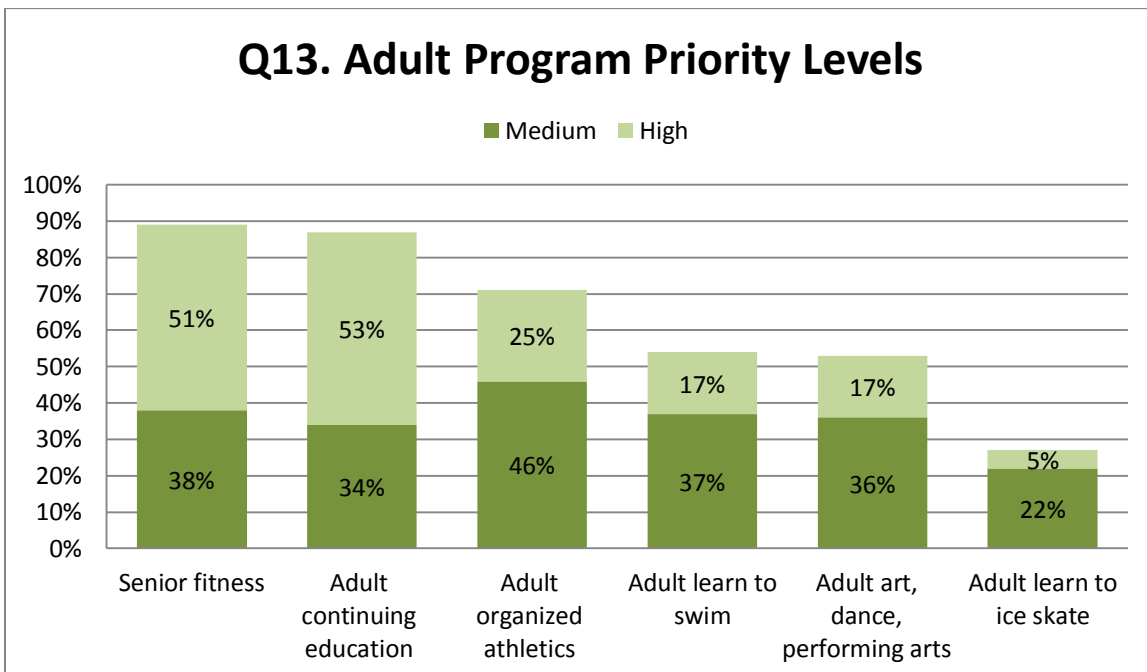
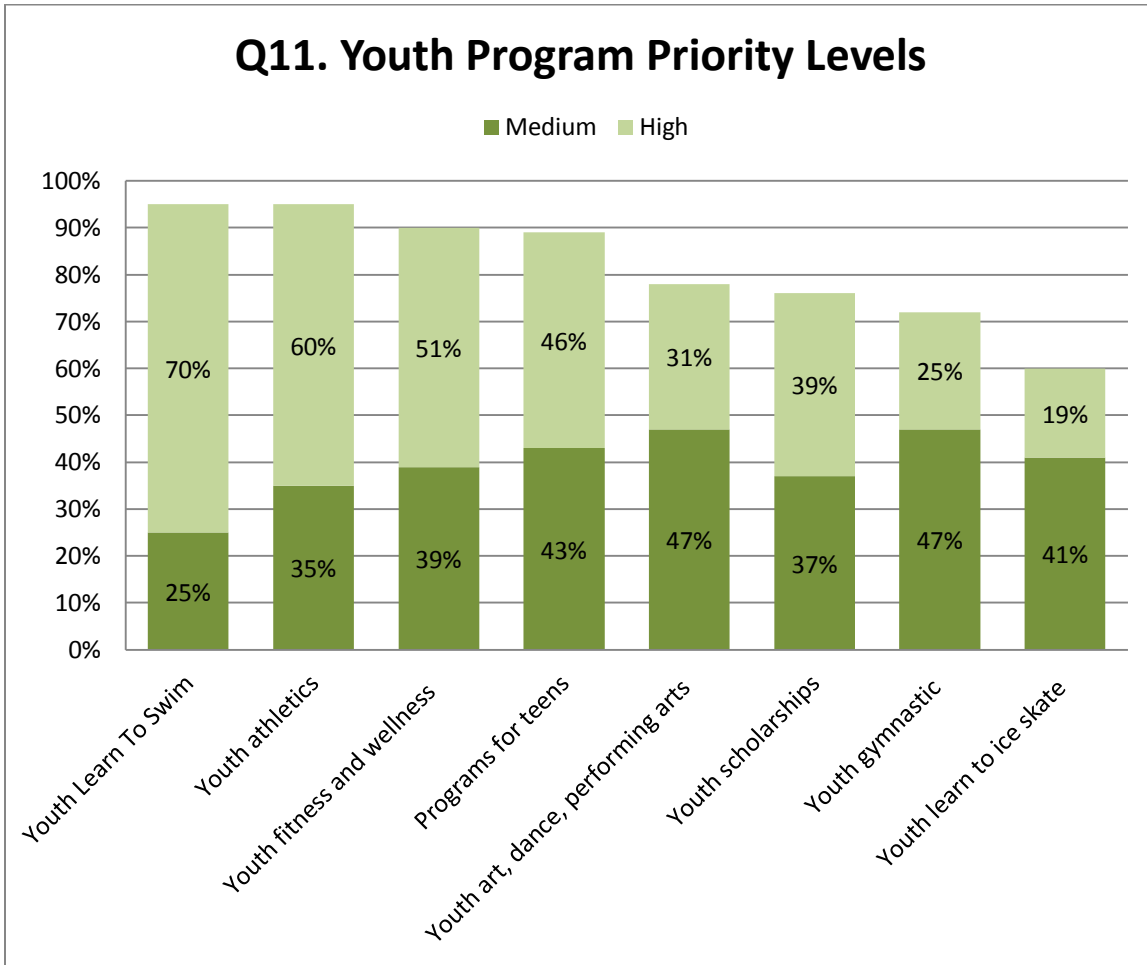


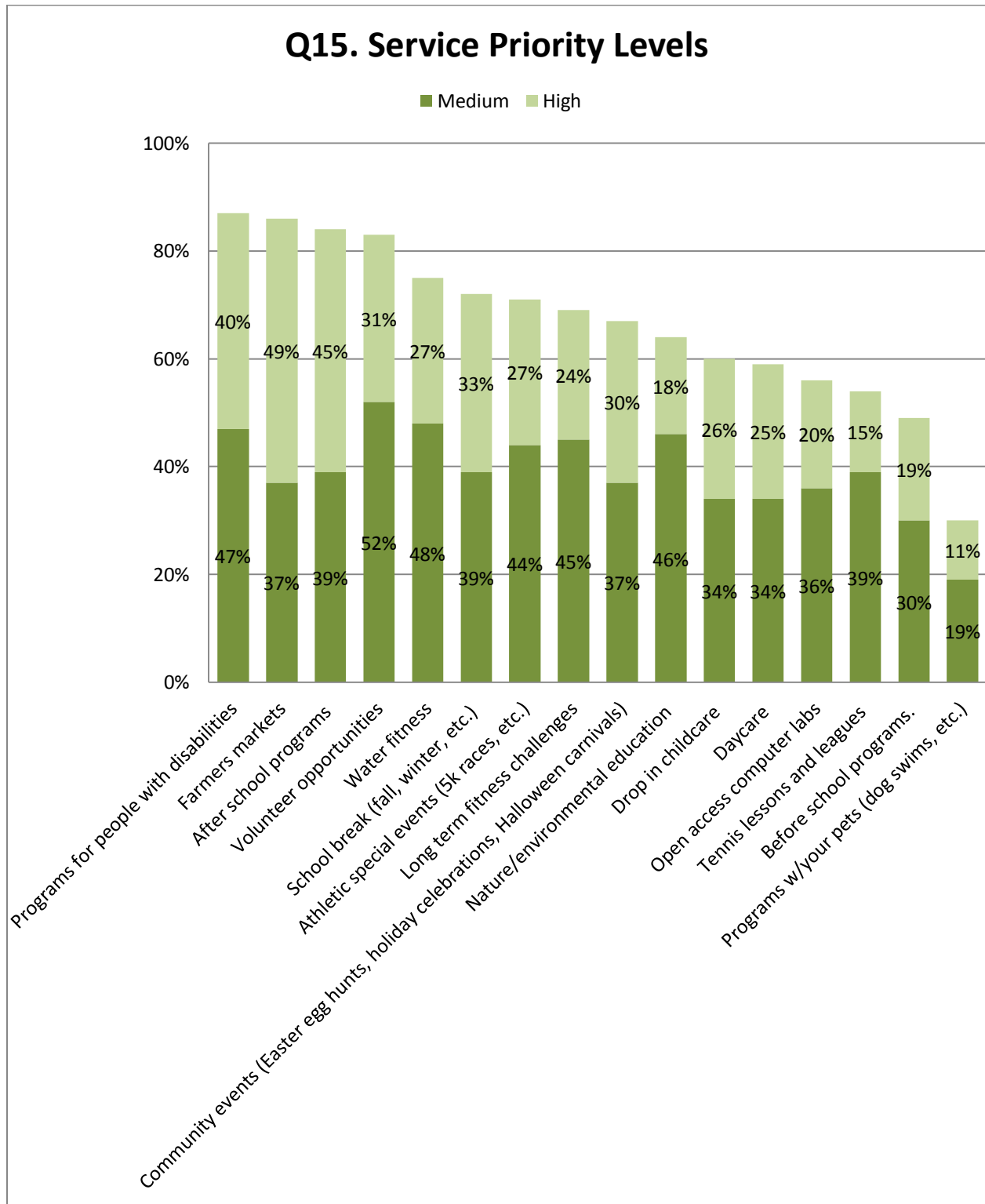
### Q5. Park Amenity Priority Levels



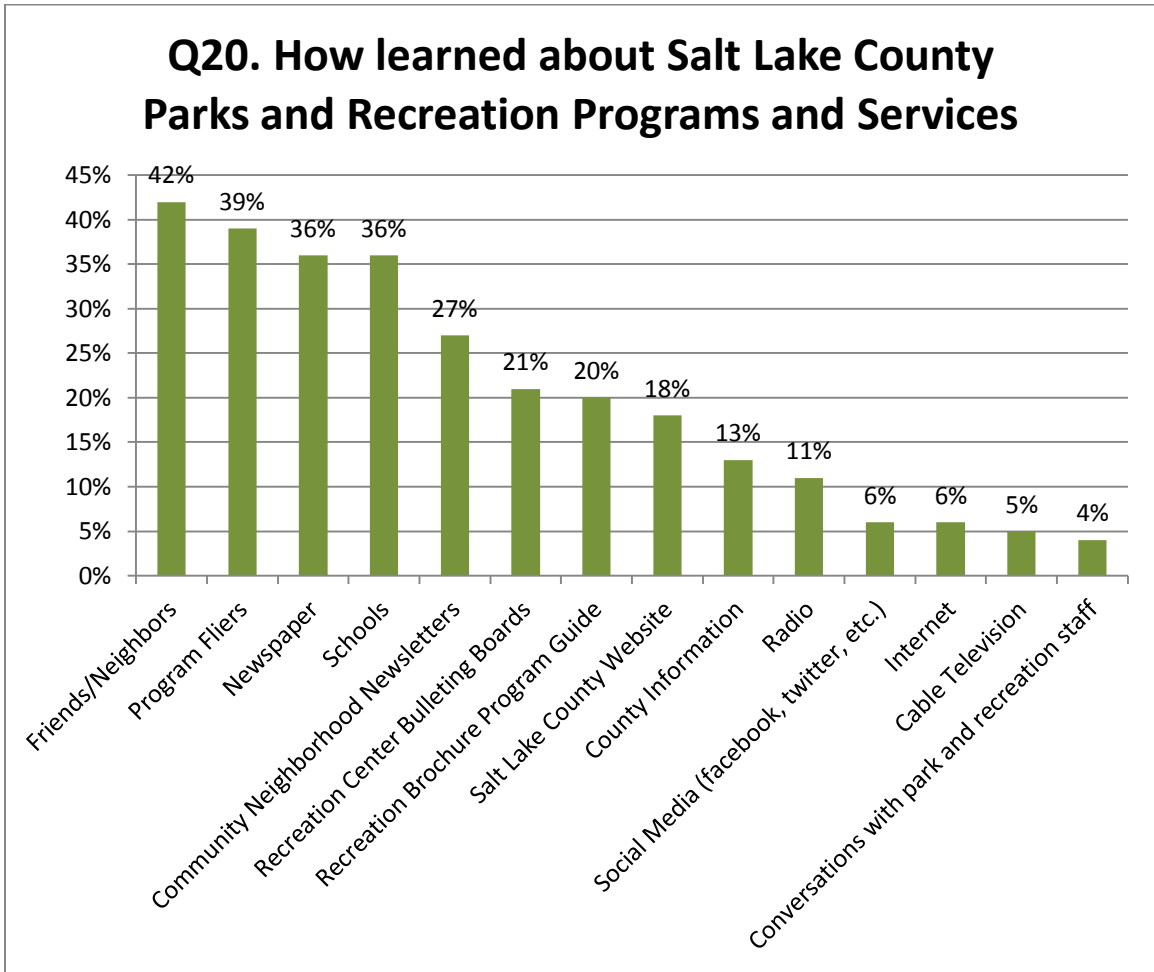








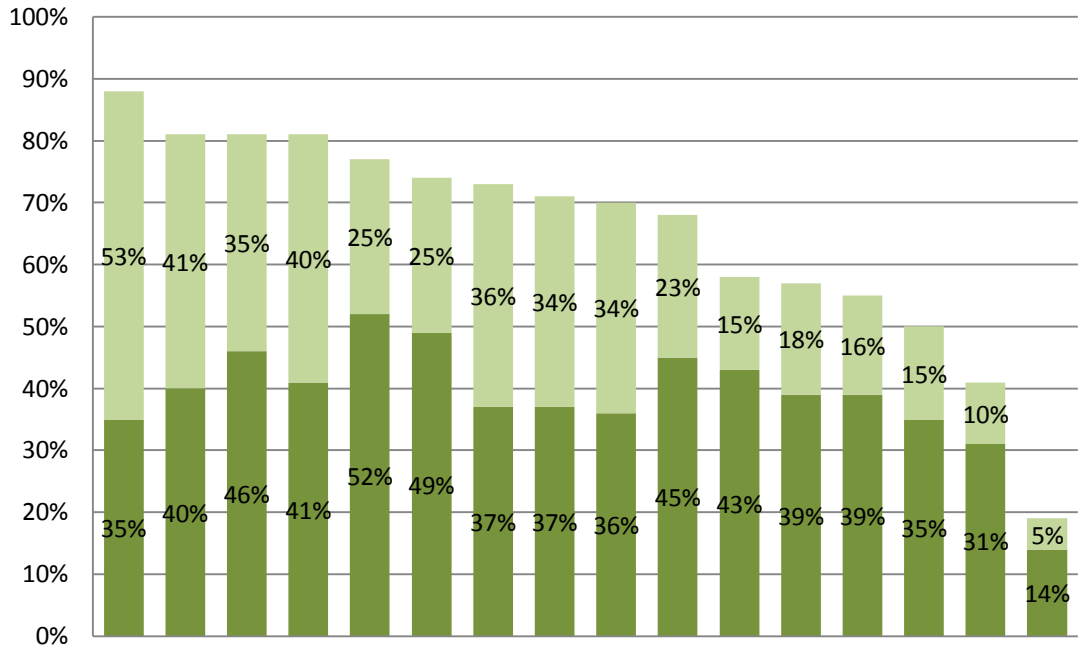




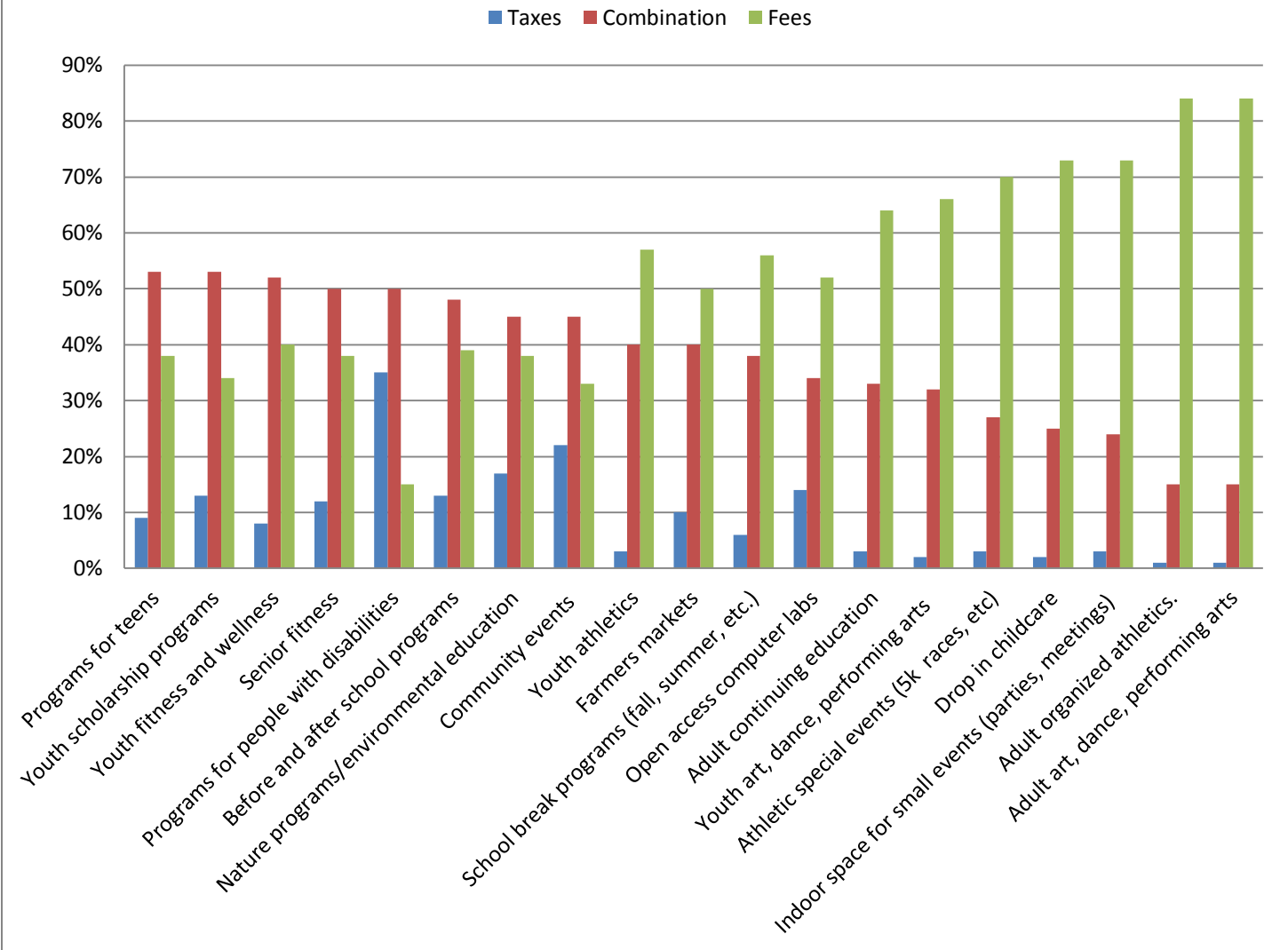
# Southwest Planning District Salt Lake County Parks and Recreation

## Q21. Action Priority Areas

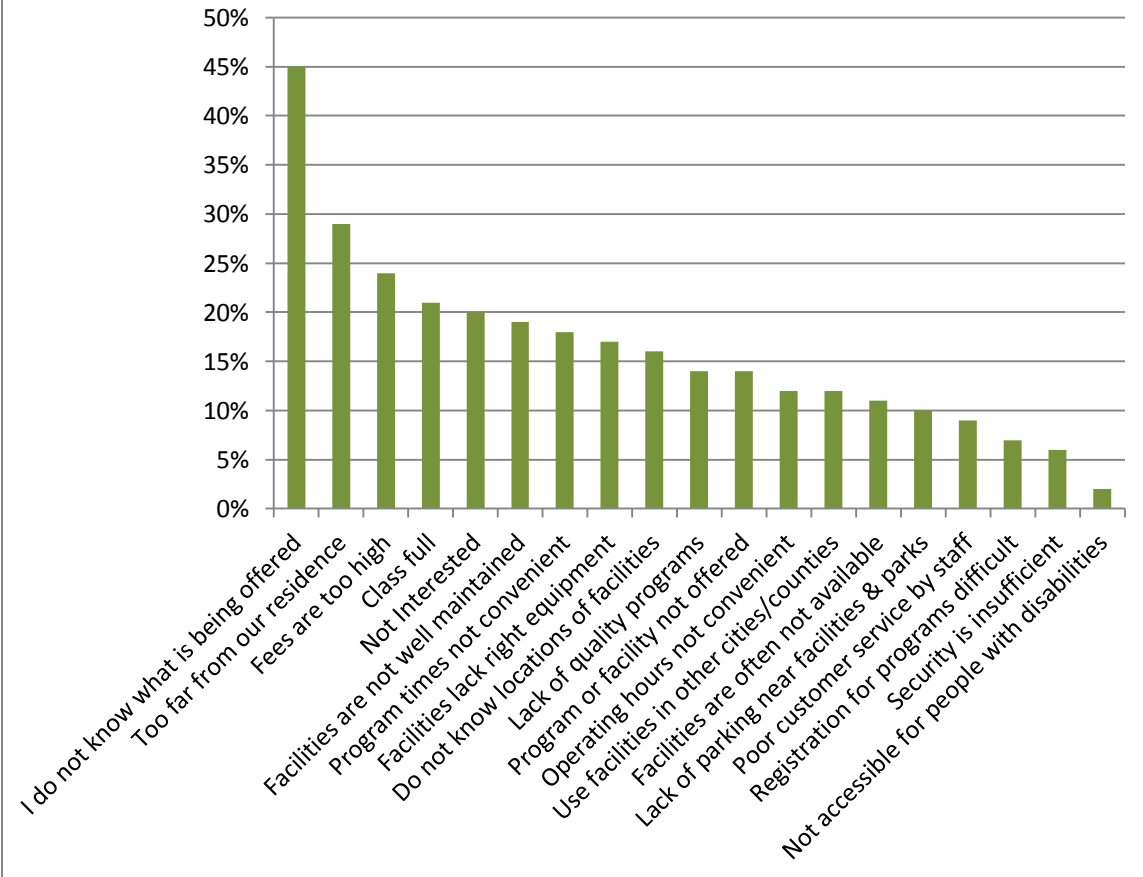
■ Medium ■ High



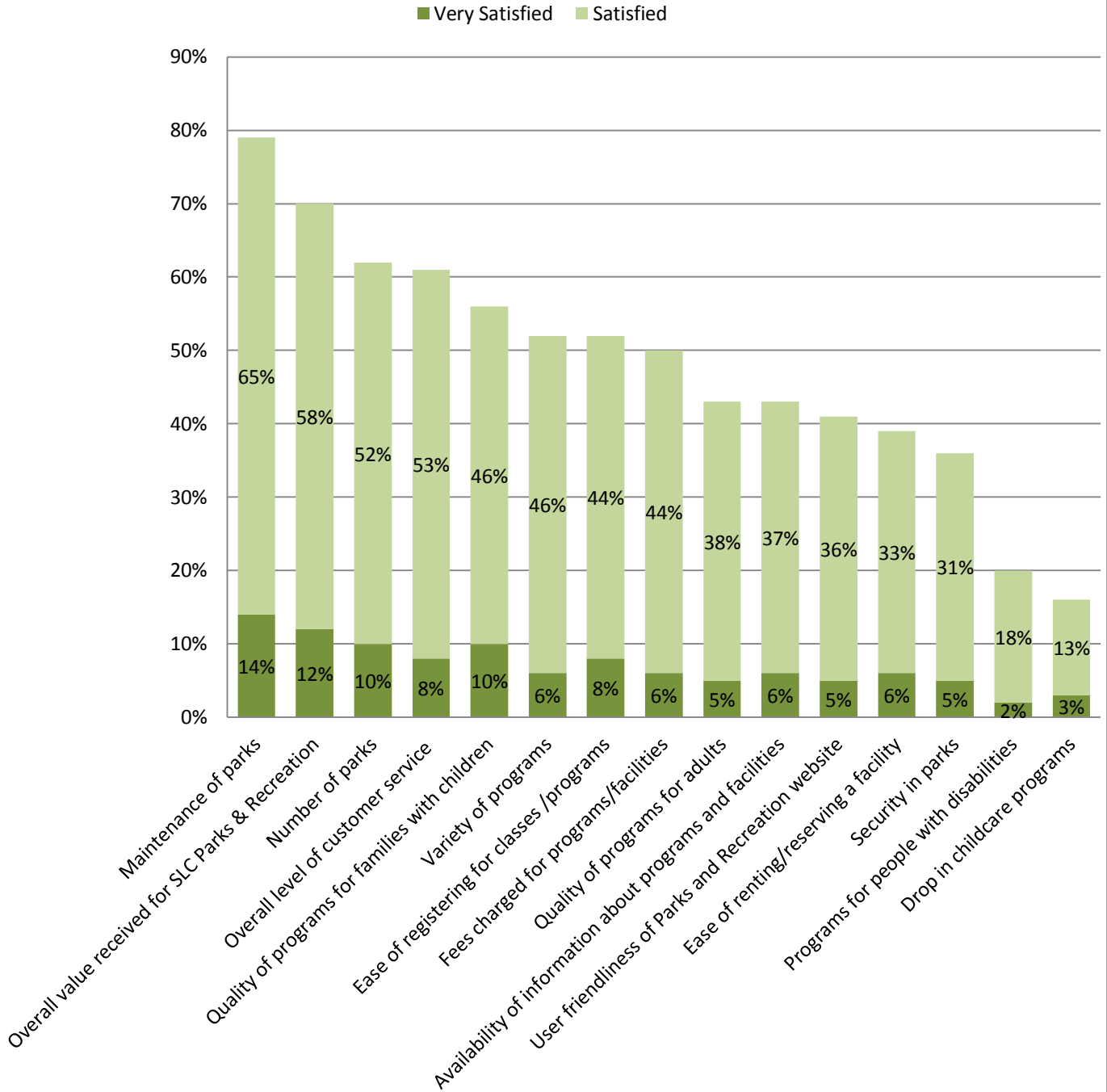
**Q23. Cost to run program should be paid with taxes, combination of taxes and user fees, or user fees**



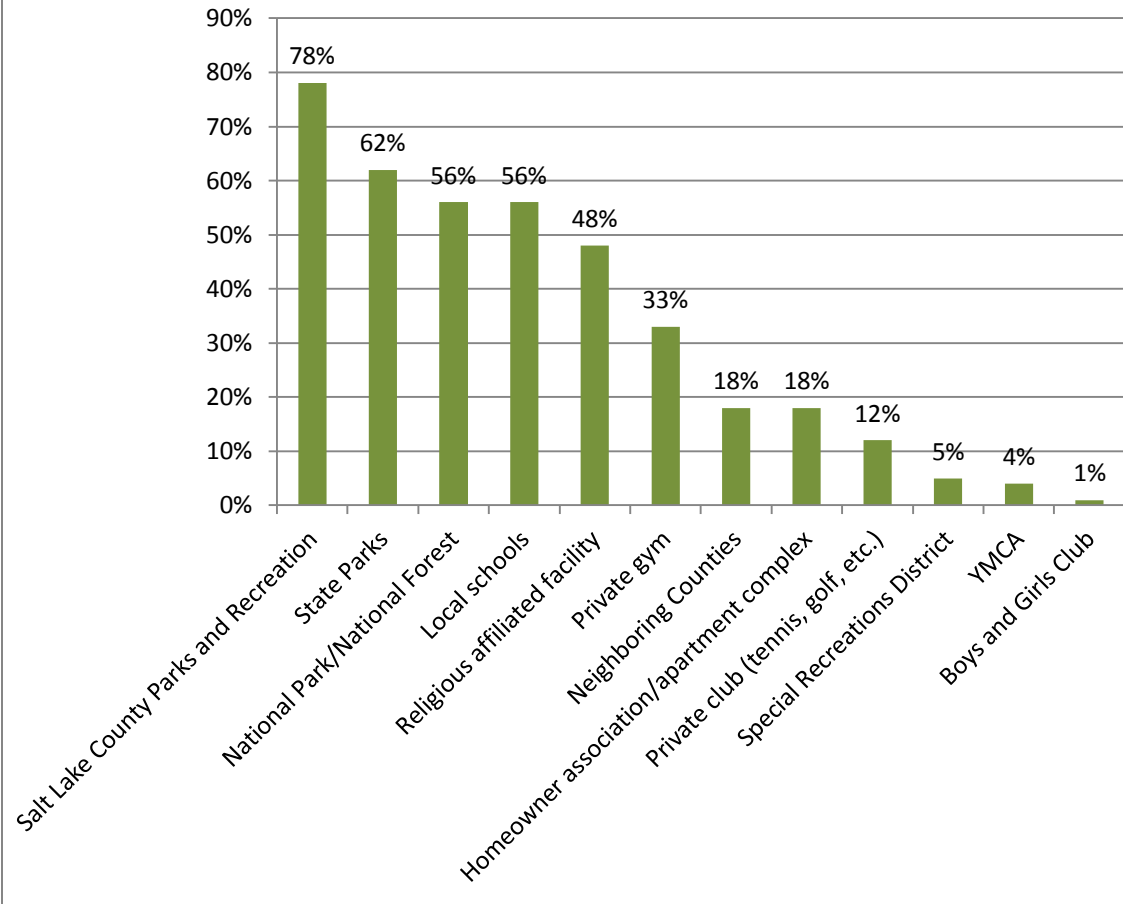
### Q24. Reasons That Prevent People From Using Salt Lake County Parks & Recreation Facilities and Programs



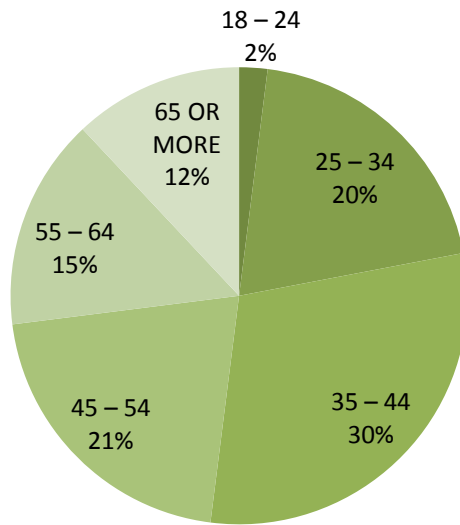
### Q25. Salt Lake County Parks and Recreation Services Satisfaction Levels



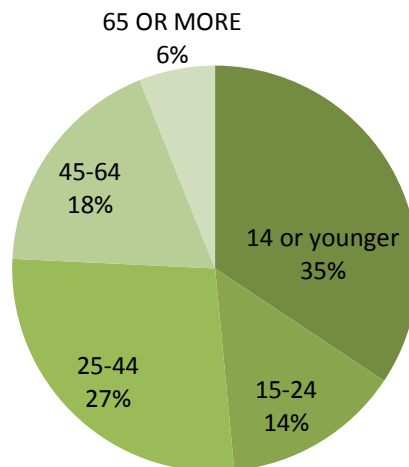
### Q28. Organizations Used by Household in the Last Twelve Months



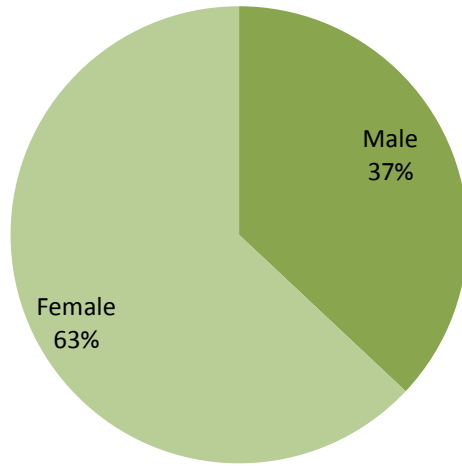
### Q35. Ages of Respondents



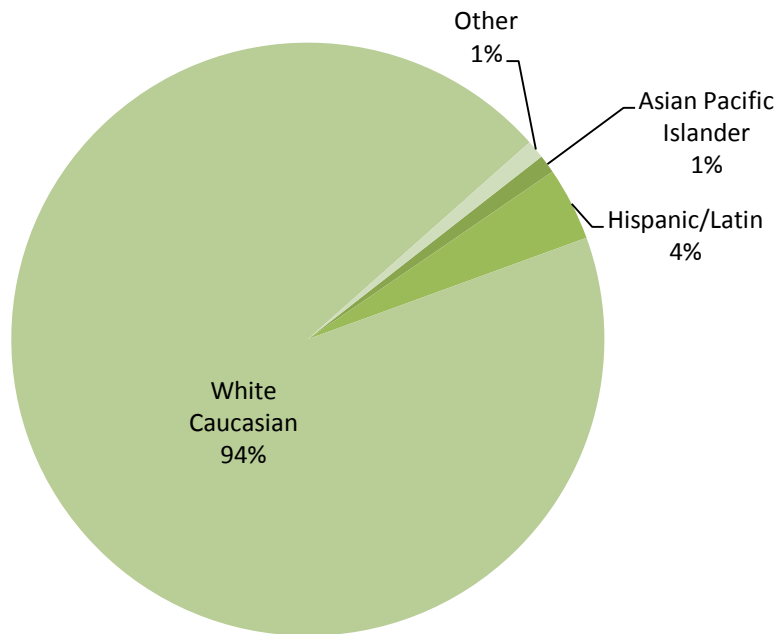
### Q36. Household Composition by Age Categories



### Q 37. Gender of Respondents



### Q38. Racial or Ethnic Identification





### Q41. What is your zip code?

