

NORTH PLANNING DISTRICT

Community Interest and Opinion Survey: Let your voice be heard today!

Salt Lake County Parks & Recreation would like your input to help determine recreational facilities, park, open space, and program priorities for our community. This survey will take approximately 15 minutes to complete. When you are finished, please return your survey in the postage-paid, return-reply envelope. We greatly appreciate your help.

First, we would like to know your opinions on Salt Lake County parks.

Q-1 Have you or members of your household visited Salt Lake County parks during the past year? (Circle your answer.)

N=575 90% YES
 10% NO (SKIP TO QUESTION Q-3.)

Q-2 If YES, how would you rate the physical conditions overall for parks you visited? (Circle answer.)

N=512 23% EXCELLENT
 68% GOOD
 9% FAIR
 POOR

Q-3 Are there parks within 10-15 minutes walking distance of your residence? (Circle answer.)

N=567 84% YES
 16% NO

Q-4 How do you travel to parks and recreation facilities? (Circle all that apply.)

N=577 2% I DO NOT TRAVEL TO PARKS AND RECREATION FACILITIES
 79% CAR
 38% BIKE
 72% WALK
 4% PUBLIC TRANSPORTATION
 3% OTHER (Please list _____)

Q-5 Listed below are some park amenities. Please indicate whether you feel that each amenity should NOT be a priority, should be given a LOW priority, MEDIUM priority, or HIGH priority in Salt Lake County parks.

Amenity number	Park Amenity	How much priority, if any, should each amenity have in Salt Lake County parks? (Please circle your answer.)			
N=563 1	Lawn area, open un-programmed	-- NOT	4% LOW	35% MEDIUM	61% HIGH
N=566 2	Group pavilion/picnic area.	1% NOT	10% LOW	49% MEDIUM	40% HIGH
N=565 3	Children's playground (traditional)	3% NOT	9% LOW	32% MEDIUM	56% HIGH
N=551 4	Children's playground (nature, etc.)	2% NOT	8% LOW	33% MEDIUM	57% HIGH
N=556 5	Horseshoe pit.	25% NOT	50% LOW	23% MEDIUM	2% HIGH
N=555 6	Skate park.	13% NOT	38% LOW	37% MEDIUM	12% HIGH
N=558 7	Fishing pond.	25% NOT	42% LOW	25% MEDIUM	8% HIGH
N=551 8	Disc golf course.	22% NOT	46% LOW	26% MEDIUM	6% HIGH
N=562 9	Off-leash dog park, fenced.	10% NOT	18% LOW	38% MEDIUM	34% HIGH
N=557 10	Off-leash dog park, not fenced.	29% NOT	28% LOW	20% MEDIUM	23% HIGH
N=559 11	Access to facilities for the disabled.	2% NOT	6% LOW	33% MEDIUM	59% HIGH
N=131 12	Other _____	6% NOT	1% LOW	16% MEDIUM	77% HIGH

Q-6 Of the amenities listed in Q-5, which do you feel are most important to your household? (Please write the amenity number from Q-5 in the appropriate box.)

Most important N=551

33% Lawn area, open and un-programmed
 17% Children's playground (traditional)
 10% Children's playground (nature, etc.)

Second most important N=540

20% Group pavilion/picnic area
 20% Lawn area, open and un-programmed
 16% Children's playground (traditional)

Third most important N=527

18% Lawn area, open and un-programmed
 18% Group pavilion/picnic area
 19% Children's playground (traditional)

Q-7 Listed below are some sports amenities. Please indicate whether you feel that each amenity should NOT be a priority, should be given a LOW priority, MEDIUM priority, or HIGH priority in Salt Lake County.

Amenity number	Sports Amenity	How much priority, if any, should each sport amenity have in Salt Lake County? (Please circle your answer.)			
N=545	1 Soccer / Football / Rugby field.	4% NOT	14% LOW	44% MEDIUM	38% HIGH
N=538	2 Lacrosse / Field hockey field	12% NOT	39% LOW	39% MEDIUM	10% HIGH
N=537	3 Little league baseball diamond	5% NOT	18% LOW	50% MEDIUM	27% HIGH
N=525	4 Babe Ruth baseball diamond.	11% NOT	31% LOW	40% MEDIUM	18% HIGH
N=540	5 Softball diamond.	7% NOT	25% LOW	49% MEDIUM	19% HIGH
N=530	6 Backstop, for pickup baseball games . . .	10% NOT	30% LOW	43% MEDIUM	17% HIGH
N=547	7 Basketball court, outdoor	4% NOT	12% LOW	50% MEDIUM	34% HIGH
N=541	8 Sand volleyball court.	5% NOT	25% LOW	48% MEDIUM	22% HIGH
N=548	9 Tennis court, outdoor	5% NOT	20% LOW	43% MEDIUM	32% HIGH
N=544	10 Golf course.	30% NOT	31% LOW	23% MEDIUM	16% HIGH
N=68	11 Other _____	18% NOT	9% LOW	22% MEDIUM	51% HIGH

Q-8 Of the amenities listed in Q-7, which do you feel are most important to your household? (Please write the amenity number from Q-7 in the appropriate box.)

Most important N=485
 35% Soccer/Football/Rugby field
 15% Tennis court, outdoor
 10% Little league baseball diamond
 10% Golf Course

Second most important N=467
 18% Soccer/Football/Rugby field
 15% Basketball court, outdoor
 14% Tennis court, outdoor

Third most important N=447
 20% Basketball court, outdoor
 14% Sand volleyball court
 13% Tennis court, outdoor

Q-9 Listed below are some more recreation amenities. Please indicate whether you feel that each amenity should NOT be a priority, should be given a LOW priority, MEDIUM priority, or HIGH priority in Salt Lake County.

Amenity number	Recreation Amenity	How much priority, if any, should each amenity have in Salt Lake County? (Please circle your answer.)			
N=566	1 Trail, walking/running/bike.	NOT	2% LOW	12% MEDIUM	86% HIGH
N=549	2 Trail, horse, equestrian	23% NOT	52% LOW	20% MEDIUM	5% HIGH
N=560	3 Natural areas / wildlife habitat	2% NOT	6% LOW	28% MEDIUM	64% HIGH
N=558	4 Jordan River water trail (kayaking, etc.)	2% NOT	16% LOW	42% MEDIUM	40% HIGH
N=559	5 Nature education facilities.	3% NOT	17% LOW	44% MEDIUM	36% HIGH
N=563	6 Community garden.	3% NOT	14% LOW	35% MEDIUM	48% HIGH
N=560	7 Indoor exercise / fitness / aerobics. . . .	7% NOT	21% LOW	35% MEDIUM	37% HIGH
N=555	8 Indoor small events space (parties, etc.)	13% NOT	41% LOW	34% MEDIUM	12% HIGH
N=552	9 Gymnasium.	10% NOT	30% LOW	44% MEDIUM	16% HIGH
N=549	10 Racquetball/squash courts.	10% NOT	43% LOW	38% MEDIUM	9% HIGH
N=558	11 Swimming pool, indoor.	4% NOT	12% LOW	39% MEDIUM	45% HIGH
N=560	12 Swimming pool, outdoor.	3% NOT	13% LOW	40% MEDIUM	43% HIGH
N=551	13 Water play splash pad.	10% NOT	27% LOW	37% MEDIUM	26% HIGH
N=549	14 Outdoor events space.	4% NOT	17% LOW	47% MEDIUM	32% HIGH
N=31	15 Other _____	19% NOT	3% LOW	19% MEDIUM	58% HIGH

Q-10 Of the amenities listed in Q-9, which do you feel are most important to your household? (Please write the amenity number from Q-9 in the appropriate box.)

Most important N=543
 58% Trail, walking/running/bike
 12% Natural areas/wildlife habitat
 8% Swimming pool, indoor

Second most important N=534
 30% Natural areas/wildlife habitat
 14% Trail, walking/running/bike
 9% Swimming pool, indoor

Third most important N=525
 16% Community garden
 12% Swimming pool, outdoor
 11% Trail, walking/running/bike
 11% Natural areas/wildlife habitat

Next we would like to know your opinions on youth recreation programs.

Q-11 Listed below are youth programs. Please indicate whether you feel that each program should NOT be a priority, should be given a LOW priority, MEDIUM priority, or HIGH priority in the Salt Lake County Parks and Recreation Department.

Program number	Recreation Program	How much priority, if any, should each program have in the Salt Lake County Parks and Recreation Department? (Please circle your answer.)			
N=561	1 Youth Learn To Swim.	2% NOT	3% LOW	28% MEDIUM	67% HIGH
N=557	2 Youth athletics	2% NOT	8% LOW	40% MEDIUM	50% HIGH
N=559	3 Youth fitness and wellness	2% NOT	7% LOW	35% MEDIUM	56% HIGH
N=552	4 Youth gymnastic.	4% NOT	31% LOW	41% MEDIUM	24% HIGH
N=554	5 Youth art, dance, performing arts	3% NOT	16% LOW	43% MEDIUM	38% HIGH
N=555	6 Youth scholarships.	6% NOT	12% LOW	35% MEDIUM	47% HIGH
N=555	7 Youth learn to ice skate.	6% NOT	38% LOW	37% MEDIUM	19% HIGH
N=552	8 Programs for teens.	3% NOT	8% LOW	40% MEDIUM	49% HIGH
N= 43	9 Other _____	12% NOT	5% LOW	23% MEDIUM	60% HIGH

Q-12 Of the programs listed in Q-11 which do you feel are most important to your household? (Please write the program number from Q-11 in the appropriate box.)

<p style="text-align: center;">Most important N=483</p> <p>43% Youth learn to swim 18% Youth fitness and wellness 12% Youth athletics</p>	<p style="text-align: center;">Second most important N=473</p> <p>25% Youth Athletics 22% Youth fitness and wellness 19% Youth learn to swim</p>	<p style="text-align: center;">Third most important N=463</p> <p>21% Youth fitness and wellness 18% Youth art, dance, performing arts 15% Programs for teens</p>
--	---	---

Now we would like to know your opinions on adult recreation programs.

Q-13 Listed below are adult programs. Please indicate whether you feel that each program should NOT be a priority, should be given a LOW priority, MEDIUM priority, or HIGH priority in the Salt Lake County Parks and Recreation Department.

Program number	Recreation Program	How much priority, if any, should each program have in the Salt Lake County Parks and Recreation Department? (Please circle your answer.)			
N=556	1 Adult learn to swim.	8% NOT	27% LOW	36% MEDIUM	29% HIGH
N=554	2 Adult learn to ice skate.	18% NOT	50% LOW	25% MEDIUM	7% HIGH
N=554	3 Adult art, dance, performing arts	8% NOT	27% LOW	40% MEDIUM	25% HIGH
N=552	4 Adult organized athletics.	6% NOT	21% LOW	45% MEDIUM	28% HIGH
N=555	5 Adult continuing education.	3% NOT	9% LOW	33% MEDIUM	55% HIGH
N=559	6 Senior fitness	2% NOT	7% LOW	34% MEDIUM	57% HIGH
N=32	7 Other _____	16% NOT	6% LOW	16% MEDIUM	62% HIGH

Q-14 Of the programs listed in Q-13 which do you feel are most important to your household? (Please write the program number from Q-13 in the appropriate box.)

<p style="text-align: center;">Most important N=513</p> <p>30% Adult continuing education 25% Senior fitness 19% Adult organized athletics</p>	<p style="text-align: center;">Second most important N=491</p> <p>33% Adult continuing education 22% Senior fitness 18% Adult organized athletics</p>	<p style="text-align: center;">Third most important N=457</p> <p>25% Senior fitness 19% Adult art, dance, performing arts 19% Adult continuing education</p>
---	--	---

Next we would like to know your opinions on other recreation services and programs.

Q-15 Listed below are services. Please indicate whether you feel that each service should NOT be a priority, should be given a LOW priority, MEDIUM priority, or HIGH priority in the Salt Lake County Parks and Recreation Department.

Program number	Service	How much priority, if any, should each service have in the Salt Lake County Parks and Recreation Department? (Please circle your answer.)			
N=550	1 Daycare	16% NOT	22% LOW	30% MEDIUM	32% HIGH
N=546	2 Drop in childcare.	15% NOT	24% LOW	31% MEDIUM	30% HIGH
N=546	3 Before school programs.	12% NOT	25% LOW	33% MEDIUM	30% HIGH
N=553	4 After school programs	5% NOT	8% LOW	35% MEDIUM	52% HIGH
N=532	5 School break (fall, winter, etc.)	8% NOT	18% LOW	42% MEDIUM	32% HIGH
N=548	6 Tennis lessons and leagues	9% NOT	32% LOW	41% MEDIUM	18% HIGH
N=546	7 Water fitness.	4% NOT	21% LOW	50% MEDIUM	25% HIGH
N=548	8 Programs for people with disabilities	2% NOT	9% LOW	44% MEDIUM	45% HIGH
N=549	9 Community events (Easter egg hunts, holiday celebrations, Halloween carnivals). . .	10% NOT	28% LOW	38% MEDIUM	24% HIGH
N=537	10 Athletic special events (5k races, etc.)	6% NOT	23% LOW	44% MEDIUM	27% HIGH
N=551	11 Nature/environmental education	3% NOT	10% LOW	43% MEDIUM	44% HIGH
N=557	12 Farmers markets.	2% NOT	8% LOW	26% MEDIUM	64% HIGH
N=548	13 Programs w/your pets (dog swims, etc.)	18% NOT	38% LOW	28% MEDIUM	16% HIGH
N=544	14 Volunteer opportunities.	2% NOT	11% LOW	49% MEDIUM	38% HIGH
N=543	15 Open access computer labs.	11% NOT	26% LOW	40% MEDIUM	23% HIGH
N=545	16 Long term fitness challenges.	5% NOT	22% LOW	48% MEDIUM	25% HIGH
N=32	17 Other _____	12% NOT	LOW	16% MEDIUM	72% HIGH
N=12	18 Other _____	25% NOT	LOW	17% MEDIUM	58% HIGH

Q-16 Of the services listed in Q-15 which do you feel are most important to your household? (Please write the program number from Q-15 in the appropriate box.)

<p>Most important N=524</p> <p>25% Farmers market</p> <p>12% After-school programs</p> <p>11% Nature/environmental education</p>	<p>Second most important N=502</p> <p>18% Farmers market</p> <p>11% Nature/environmental education</p> <p>10% After-school programs</p>	<p>Third most important N=486</p> <p>14% Farmers market</p> <p>13% Nature/environmental education</p> <p>10% After-school programs</p> <p>10% Volunteer Opportunities</p>
--	---	---

Next, we want to ask you about recreational programs or special events provided by Salt Lake County Parks and Recreation.

Q-17 Have you or other members of your household participated in recreational programs or special events such as 5K races, holiday events (Easter Egg Hunts, Trunk or Treat, etc.) offered by Salt Lake County Parks & Recreation during the past 12 months?
 N=564
 23% YES
 77% NO (SKIP TO QUESTION Q-20.)

Q-18 If YES, approximately how many different Salt Lake County Parks & Recreation recreational programs or special events have you or members of your household participated in over the past 12 months?
 N=134
 29% ONE PROGRAM
 53% TWO OR THREE PROGRAMS
 13% FOUR TO SIX PROGRAMS
 2% SEVEN TO TEN PROGRAMS
 3% MORE THAN TEN PROGRAMS

Q-19 How do you rate the overall quality of the programs or events in which you and members of your household have N=159 participated?

- 26% EXCELLENT
- 65% GOOD
- 7% FAIR
- 2% POOR

Q-20 How have you learned about the programs or services offered by Salt Lake County Parks & Recreation? (Circle all that apply.)

N=577

- | | |
|---------------------------------------|--|
| 41% NEWSPAPER | 15% RECREATION BROCHURE/PROGRAM GUIDE |
| 21% SALT LAKE COUNTY WEBSITE | 6% CONVERSATIONS WITH PARKS AND RECREATION STAFF |
| 17% SCHOOLS | 8% CABLE TELEVISION |
| 10% COUNTY INFORMATION | 26% COMMUNITY/NEIGHBORHOOD NEWSLETTERS |
| 34% PROGRAM FLIERS | 8% SOCIAL MEDIA(FACEBOOK, TWITTER, ETC.) |
| 45% FRIENDS/NEIGHBORS | 8% INTERNET (If so what Site?_____) |
| 16% RECREATION CENTER BULLETIN BOARDS | 7% OTHER_____ |
| 23% RADIO | |

We will now ask some questions on potential actions for Salt Lake County Parks and Recreation.

Q-21 Following is a list of POTENTIAL actions that Salt Lake County Parks and Recreation could take to improve recreation, parks, and community activities in Salt Lake County. For each potential action, please indicate if that should NOT be a priority, should be given a LOW priority, MEDIUM priority, or HIGH priority

Action number	Existing Parks and Recreation Facilities	How much priority, if any, should each action have in the Salt Lake County Parks and Recreation Department?			
N=535	1 Higher level of park maintenance.	2% NOT	14% LOW	49% MEDIUM	35% HIGH
N=532	2 Higher level of building maintenance.	3% NOT	18% LOW	52% MEDIUM	27% HIGH
N=528	3 Higher level of sports field maintenance.	4% NOT	26% LOW	51% MEDIUM	19% HIGH
N=530	4 Higher level of golf course maintenance.	24% NOT	38% LOW	29% MEDIUM	9% HIGH
N=531	5 Higher level of natural area maintenance.	3% NOT	13% LOW	41% MEDIUM	43% HIGH
N=538	6 Improve regional trails (Jordan River, Bonneville Shoreline, etc)	2% NOT	10% LOW	32% MEDIUM	56% HIGH
N=523	7 Light more sports fields.	14% NOT	35% LOW	35% MEDIUM	16% HIGH
N=526	8 Convert natural turf grass sports fields to synthetic turf.	50% NOT	33% LOW	13% MEDIUM	4% HIGH
New Parks and Recreation Facilities					
N=534	9 Purchase land for regional trails.	5% NOT	16% LOW	29% MEDIUM	50% HIGH
N=536	10 Purchase land to preserve natural areas, open space.	4% NOT	9% LOW	21% MEDIUM	66% HIGH
N=529	11 Purchase land for parks.	3% NOT	14% LOW	40% MEDIUM	43% HIGH
N=513	12 Build new passive use parks.	6% NOT	25% LOW	46% MEDIUM	23% HIGH
N=530	13 Build new athletic fields.	11% NOT	44% LOW	35% MEDIUM	10% HIGH
N=529	14 Build new swimming pools.	10% NOT	35% LOW	36% MEDIUM	19% HIGH
N=535	15 Build new walking, hiking and biking trails.	4% NOT	8% LOW	29% MEDIUM	59% HIGH
N=518	16 Build new outdoor special event venues.	14% NOT	43% LOW	31% MEDIUM	12% HIGH

Q-22 Of the actions listed in Q-21 which is most important to pay for with tax dollars? (Please write the action number from Q-21 in the appropriate box.)

Most important N=516
 22% Purchase land to preserve natural areas, open space
 15% Higher level of park maintenance
 14% Improve regional trails (Jordan River, Bonneville Shoreline, etc.)

Second most important N=508
 19% Purchase land to preserve natural areas, open space
 15% Build new walking, hiking and biking trails
 13% Purchase land for regional trails

Third most important N=498
 17% Build new walking, hiking and biking trails
 12% Purchase land to preserve natural areas, open space
 12% Purchase land for parks
 12% Purchase land for regional trails

Q-23 Listed below are some activities and recreation programs. Please indicate whether you feel the costs to run each program should be paid from TAXES, a COMBINATION of taxes and user fees, or only with user FEES.

Recreation Program		How should the costs to run this program be paid? (Please circle your answer.)		
N=543	1 Youth fitness and wellness	18% TAXES	59% COMBINATION	23% FEES
N=542	2 Youth athletics	7% TAXES	58% COMBINATION	35% FEES
N=539	3 Youth art, dance, performing arts	10% TAXES	51% COMBINATION	39% FEES
N=530	4 Youth scholarship programs.	29% TAXES	50% COMBINATION	21% FEES
N=538	5 Programs for teens.	18% TAXES	59% COMBINATION	23% FEES
N=540	6 Before and after school programs.	22% TAXES	55% COMBINATION	23% FEES
N=538	7 School break programs (fall, summer, etc.).	10% TAXES	52% COMBINATION	38% FEES
N=534	8 Adult organized athletics.	1% TAXES	26% COMBINATION	73% FEES
N=539	9 Adult art, dance, performing arts.	1% TAXES	26% COMBINATION	73% FEES
N=539	10 Adult continuing education.	4% TAXES	39% COMBINATION	57% FEES
N=538	11 Senior fitness	17% TAXES	57% COMBINATION	26% FEES
N=539	12 Community events (Easter egg hunts, holiday celebrations, Halloween carnivals, etc.).	18% TAXES	46% COMBINATION	36% FEES
N=540	13 Nature programs/environmental education.	32% TAXES	51% COMBINATION	17% FEES
N=542	14 Open access computer labs.	20% TAXES	43% COMBINATION	37% FEES
N=536	15 Drop in childcare.	8% TAXES	38% COMBINATION	54% FEES
N=544	16 Programs for people with disabilities.	39% TAXES	50% COMBINATION	11% FEES
N=541	17 Indoor space for small events (parties, meetings)	2% TAXES	24% COMBINATION	74% FEES
N=541	18 Athletic special events (5k races, etc).	2% TAXES	34% COMBINATION	64% FEES
N=546	19 Farmers markets.	21% TAXES	46% COMBINATION	33% FEES
N=46	20 _____	18% TAXES	41% COMBINATION	41% FEES

Q-24 Listed below are reasons that may **prevent** people from using Salt Lake County Parks & Recreation facilities and programs. (Please circle the numbers of ALL reasons that **prevent** you or other members of your household from using Salt Lake County Parks & Recreation facilities and programs.)

- | | |
|--|--|
| 18% Facilities are not well maintained | 13% Program or facility not offered |
| 11% Facilities lack right equipment | 12% Security is insufficient |
| 15% Lack of quality programs | 21% Too far from our residence |
| 9% Class full | 17% Program times not convenient |
| 9% Use facilities in other cities/counties | 17% Fees are too high |
| 8% Poor customer service by staff | 21% Do not know locations of facilities |
| 20% Not Interested | 5% Not accessible for people with disabilities |
| 59% I do not know what is being offered | 9% Lack of parking near facilities & parks |
| 15% Operating hours not convenient | 7% Facilities are often not available |
| 7% Registration for programs difficult | 8% _____ |

Q-25 Listed below are some services of the Salt Lake County Parks and Recreation Department. Please indicate the extent you are satisfied or dissatisfied with each of the following services by using the scale below:

Services		Very Satisfied	Satisfied	Undecided or unsure	Dissatisfied	Very Dissatisfied
N=550	1 Overall value your household receives from Salt Lake County Parks & Recreation.	15% VS	57% S	23% U	4% D	1% VDIS
N=552	2 Maintenance of parks.	11% VS	64% S	16% U	8% D	1% VDIS
N=552	3 Number of parks.	11% VS	56% S	21% U	10% D	2% VDIS
N=545	4 Security in parks.	6% VS	36% S	41% U	15% D	2% VDIS
N=538	5 Availability of information about programs and facilities.	3% VS	27% S	38% U	28% D	4% VDIS
N=532	6 Quality of programs for families with children.	4% VS	30% S	61% U	4% D	1% VDIS
N=532	7 Quality of programs for adults	2% VS	34% S	55% U	7% D	2% VDIS
N=528	8 User friendliness of Parks and Recreation website	3% VS	31% S	58% U	6% D	2% VDIS
N=527	9 Programs for people with disabilities . .	1% VS	16% S	78% U	5% D	VDIS
N=525	10 Variety of programs.	3% VS	37% S	53% U	7% D	VDIS
N=529	11 Ease of registering for classes /programs.	4% VS	35% S	56% U	6% D	VDIS
N=529	12 Ease of renting/reserving a facility. . .	3% VS	27% S	65% U	5% D	VDIS
N=533	13 Fees charged for programs/facilities . .	4% VS	39% S	51% U	5% D	1% VDIS
N=533	14 Overall level of customer service	6% VS	44% S	45% U	4% D	1% VDIS
N=514	15 Drop in childcare programs.	3% VS	11% S	81% U	4% D	1% VDIS

Q-26 Listed below are **benefits** from having Salt Lake County Parks & Recreation facilities and programs. Please indicate the extent you agree or disagree with each of the following benefits using the scale below:

Statement Number	Benefit	Strongly Agree	Mildly Agree	Undecided or unsure	Mildly Disagree	Strongly Disagree
N=556	1 Improves physical health and wellness	68% SA	24% MA	7% U	1% MD	SD
N=555	2 Helps reduce neighborhood crime	37% SA	34% MA	24% U	4% MD	1% SD
N=557	3 Makes Salt Lake County a better place to live	76% SA	20% MA	3% U	1% MD	SD
N=554	4 Preserves open-space	64% SA	27% MA	8% U	1% MD	SD
N=555	5 Protects the environment	52% SA	29% MA	15% U	3% MD	1% SD
N=550	6 Increases property values in surrounding areas	54% SA	29% MA	14% U	2% MD	1% SD
N=555	7 Improves mental health and reduces stress	64% SA	27% MA	7% U	1% MD	1% SD
N=554	8 Increases cultural and community interaction	52% SA	33% MA	12% U	2% MD	1% SD
N=552	9 Attracts new residents	39% SA	31% MA	26% U	3% MD	1% SD
N=552	10 Attracts new businesses	28% SA	30% MA	37% U	4% MD	1% SD
N=552	11 Protects historical assets of the County	38% SA	31% MA	27% U	3% MD	1% SD
N=552	12 Promotes tourism to the County	27% SA	27% MA	37% U	7% MD	2% SD

Q-27 Of the benefits listed in Q-26 which is most important to your household? (Please write the statement number from Q-26 in the appropriate box.)

<p>Most important N=515</p> <p>48% Improves physical health and wellness</p> <p>19% Makes Salt Lake County a better place to live</p> <p>12% Preserves open space</p>

<p>Second most important N=510</p> <p>19% Makes Salt Lake County a better place to live</p> <p>19% Preserves open space</p> <p>13% Helps reduce neighborhood crime</p>
--

<p>Third most important N=506</p> <p>16% Improves mental health and Stress</p> <p>15% Makes Salt Lake County a better place to live</p> <p>13% Preserves open space</p>

We would now like to learn more about recreation organizations you and your household members use.

Q-28 Please circle ALL the organizations that you and members of your household have used for recreation activities during the last 12 months.

- N=564
- 3% YMCA
 - 24% RELIGIOUS AFFILIATED FACILITY
 - 38% LOCAL SCHOOLS
 - 74% STATE PARKS
 - 14% PRIVATE CLUB (TENNIS, GOLF, ETC.)
 - 36% PRIVATE GYM
 - 4% SPECIAL RECREATION DISTRICT
 - 80% SALT LAKE COUNTY PARKS & RECREATION
 - 73% NATIONAL PARK/NATIONAL FOREST
 - 19% NEIGHBORING COUNTIES
 - 6% HOMEOWNER ASSOCIATION/APARTMENT COMPLEX
 - 4% BOYS AND GIRLS CLUB
 - 7% _____

Q-29 Of the organizations listed in Q-28 which organizations were used most by household members ages 11 years or younger during the past 12 months. (Please write in the organization number from Q-28 in the appropriate box or if you have no household members 11 or younger circle that answer.)

<p>Used most N=174</p> <p>42% Salt Lake County Parks and Recreation</p> <p>18% Local Schools</p>
--

<p>Used second most N=157</p> <p>26% Salt Lake County Parks and Recreation</p> <p>20% State Parks</p>

67% No one in household ages 11 years or younger

Q-30 Of the organizations listed in Q-28 which organizations were used most by household members ages 12 to 17 years during the past 12 months. (Please write in the organization number from Q-28 in the appropriate box or if you have no household members ages 12 to 17 years circle that answer.)

<p>Used most N=93</p> <p>39% Salt Lake County Parks and Recreation</p> <p>32% Local Schools</p>

<p>Used second most N=86</p> <p>29% Salt Lake County Parks and Recreation</p> <p>17% Local Schools</p>
--

78% No one in household ages 12 to 17 years

Q-31 Of the organizations listed in Q-28 which organizations were used most by household members' ages 18 to 54 years during the past 12 months. (Please write in the organization number from Q-28 in the appropriate box or if you have no household members ages 18 to 54 years circle that answer.)

<p style="text-align: center;">Used most N=410</p> <p>39% Salt Lake County Parks and Recreation</p> <p>17% Private gym</p>	<p style="text-align: center;">Used second most N=384</p> <p>25% Salt Lake County Parks and Recreation</p> <p>25% National Park/National Forrest</p>	<p>25% No one in household ages 18 to 54 years</p>
--	--	--

Q-32 Of the organizations listed in Q-28 which organizations were used most by household members ages 55 and over during the past 12 months. (Please write in the organization number from Q-28 in the appropriate box or if you have no household members ages 55 and over circle that answer.)

<p style="text-align: center;">Used most N=160</p> <p>38% Salt Lake County Parks and Recreation</p> <p>19% National Park/National Forest</p>	<p style="text-align: center;">Used second most N=135</p> <p>30% Salt Lake County Parks and Recreation</p> <p>21% National Park/National Forest</p> <p>21% State Park</p>	<p>63% No one in household ages 55 and over</p>
--	---	---

Finally, we'd like to ask you a little about your household.

Q-33 How many years have you lived in Salt Lake County?

N=572

- 7% 1-2 YEARS
- 11% 3-5 YEARS
- 13% 6-10 YEARS
- 17% 11-20 YEARS
- 16% 21-30 YEARS
- 36% MORE THAN 30 YEARS

Q-34 Are you renting, buying, or do you own your own home in Salt Lake County?

N=571

- 22% RENTING
- 19% BUYING
- 59% OWN

Q-35 Which category best describes your age?

N=567

- 4% 18 – 24
- 25% 25 – 34
- 23% 35 – 44
- 16% 45 – 54
- 16% 55 – 64
- 16% 65 OR MORE

Q-36 Please circle the number of persons, including yourself, in your household for each of the following age categories:

	Age Category	Circle the number of persons in your household for each age category					
N=559	1 Ages 5 Younger	79% ZERO	15% 1	6% 2	3	4	5 OR MORE
N=563	2 Ages 6-9	89% ZERO	8% 1	2% 2	3	4	5 OR MORE
N=563	3 Ages 10-14	90% ZERO	7% 1	2% 2	3	4	5 OR MORE
N=563	4 Ages 15-19	90% ZERO	8% 1	2% 2	3	4	5 OR MORE
N=563	5 Ages 20-24	90% ZERO	5% 1	3% 2	1% 3	4	5 OR MORE
N=563	6 Ages 25-34	68% ZERO	14% 1	17% 2	3	1% 4	5 OR MORE
N=563	7 Ages 35-44	72% ZERO	15% 1	13% 2	3	4	5 OR MORE
N=563	8 Ages 45-54	78% ZERO	13% 1	9% 2	3	4	5 OR MORE
N=563	9 Ages 55-64	81% ZERO	12% 1	6% 2	3	4	5 OR MORE
N=563	10 Ages 65 or more	81% ZERO	13% 1	6% 2	3	4	5 OR MORE

Q-37 Are you male or female?

N=564

38% MALE
62% FEMALE

Q-38 Which of the following categories best describes your racial or ethnic identification? (Circle one answer)

N=551

1% AFRICAN AMERICAN/BLACK
2% ASIAN
PACIFIC ISLANDER
4% HISPANIC/LATIN
91% WHITE/CAUCASIAN
NATIVE AMERICAN
2% OTHER _____

Q-39 Do you or someone in your household have a cognitive or physical disability?

N=574

11% YES
89% NO

Q-40 Are you a dog owner?

N=574

45% YES
55% NO

Q-41 What is your zip code? _____

	City	Frequency	Valid Percent
84101	Salt Lake City	23	4.0
84102	Salt Lake City	80	13.9
84103	Salt Lake City	86	14.9
84104	Salt Lake City	52	9.0

	City	Frequency	Valid Percent
84105	Salt Lake City	114	19.8
84108	Salt Lake City	78	13.5
84111	Salt Lake City	82	14.2
84116	Salt Lake City	61	10.6
84122	Salt Lake City	1	.2
Total		577	100.0

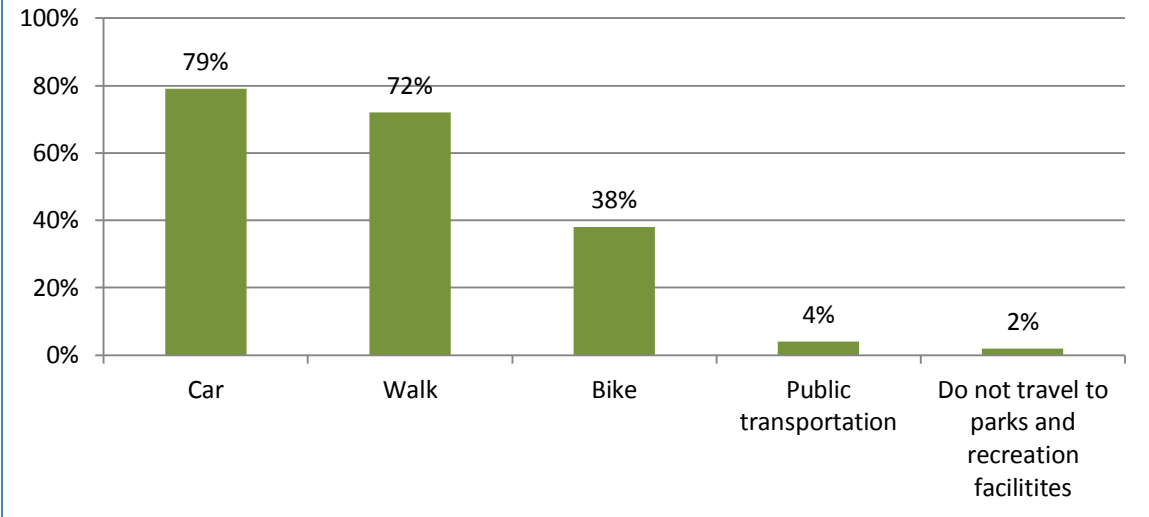
Your comments will be appreciated, either here or in a separate envelope.

Thank you for your help.

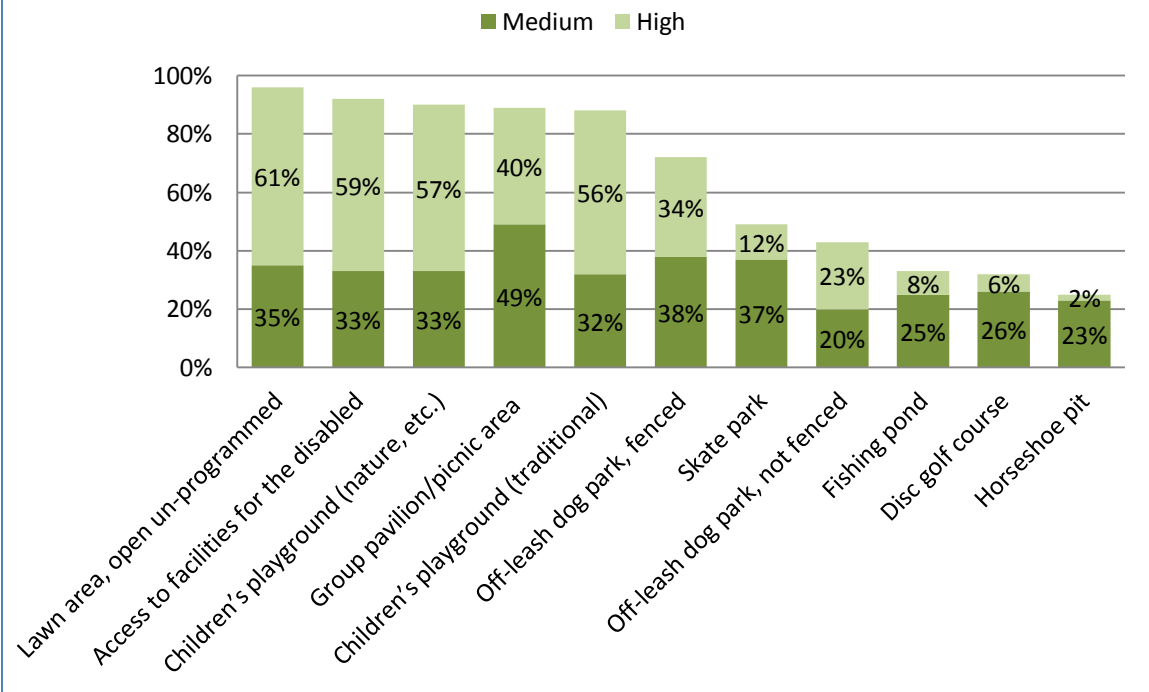
Please return your completed questionnaire in the enclosed return-reply envelope to:

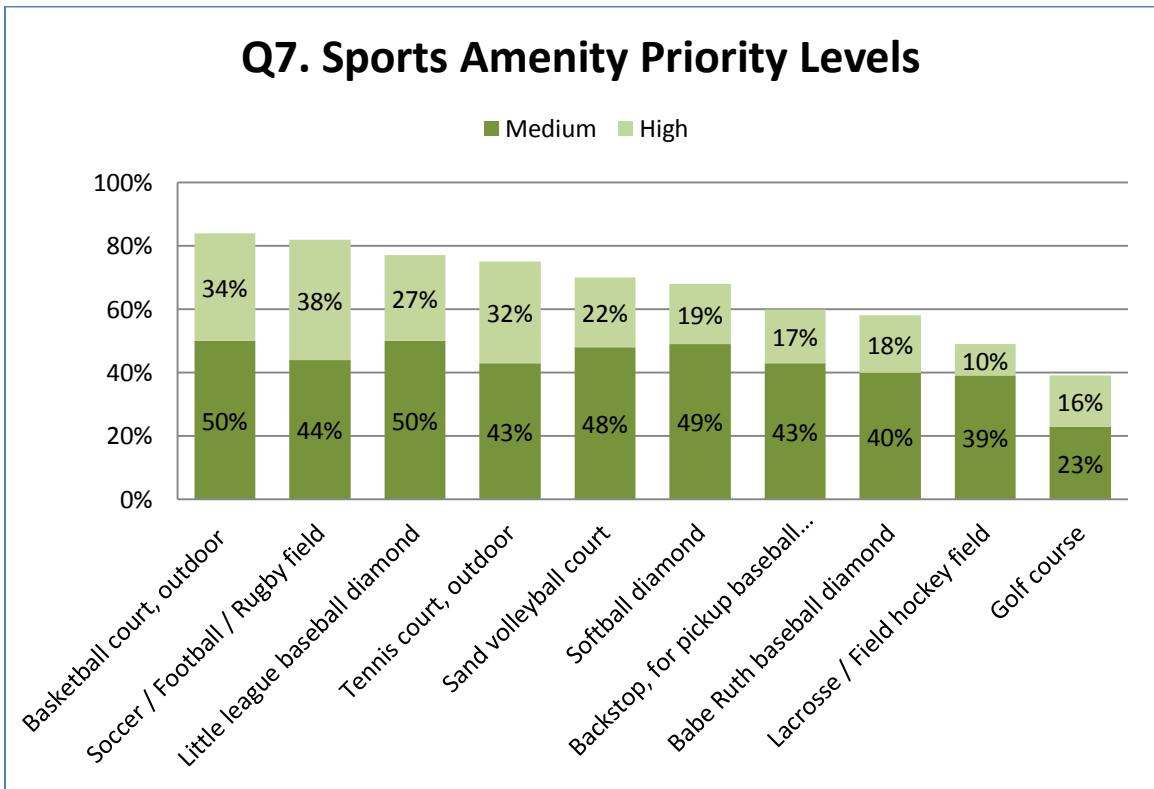
Salt Lake County Parks & Recreation
 Attn: Martin Jensen S-4700
 PO BOX 27637
 Salt Lake City, UT 84127-9914

Q4. How do you travel to parks and recreation facilities?

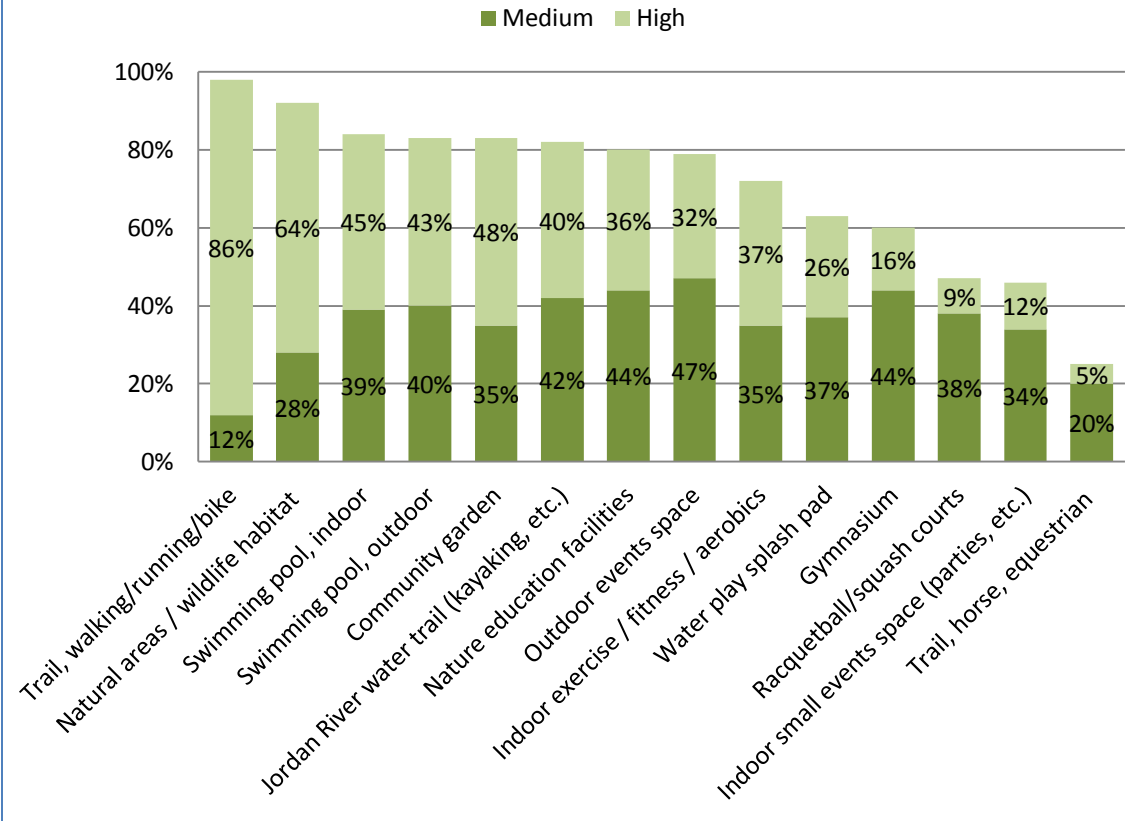


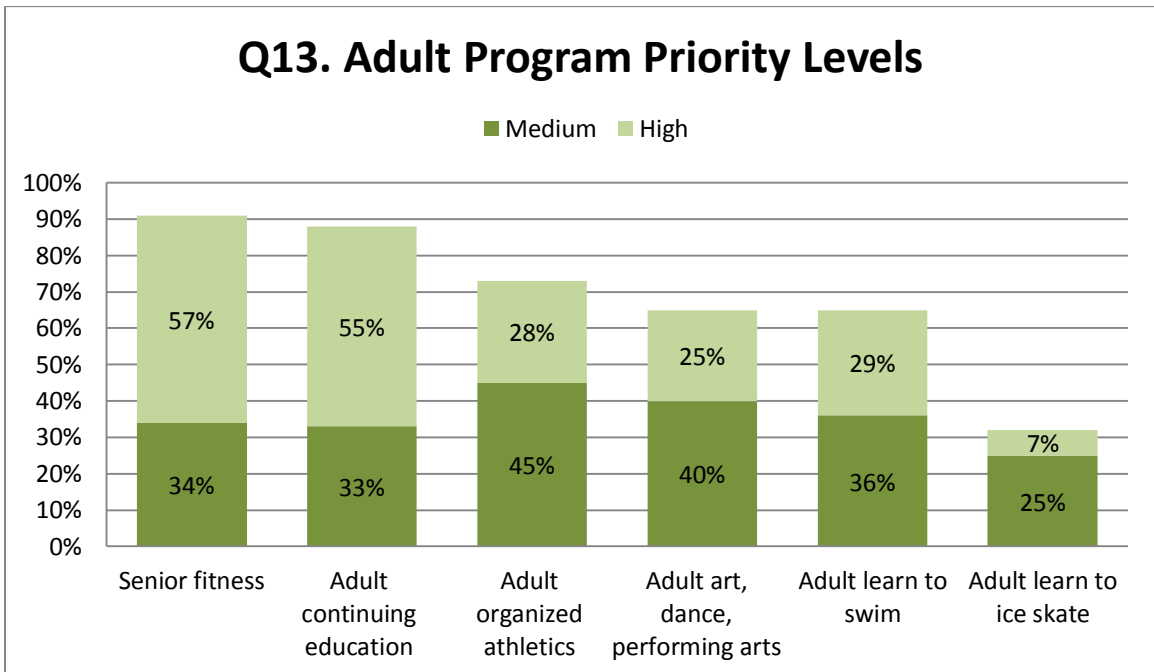
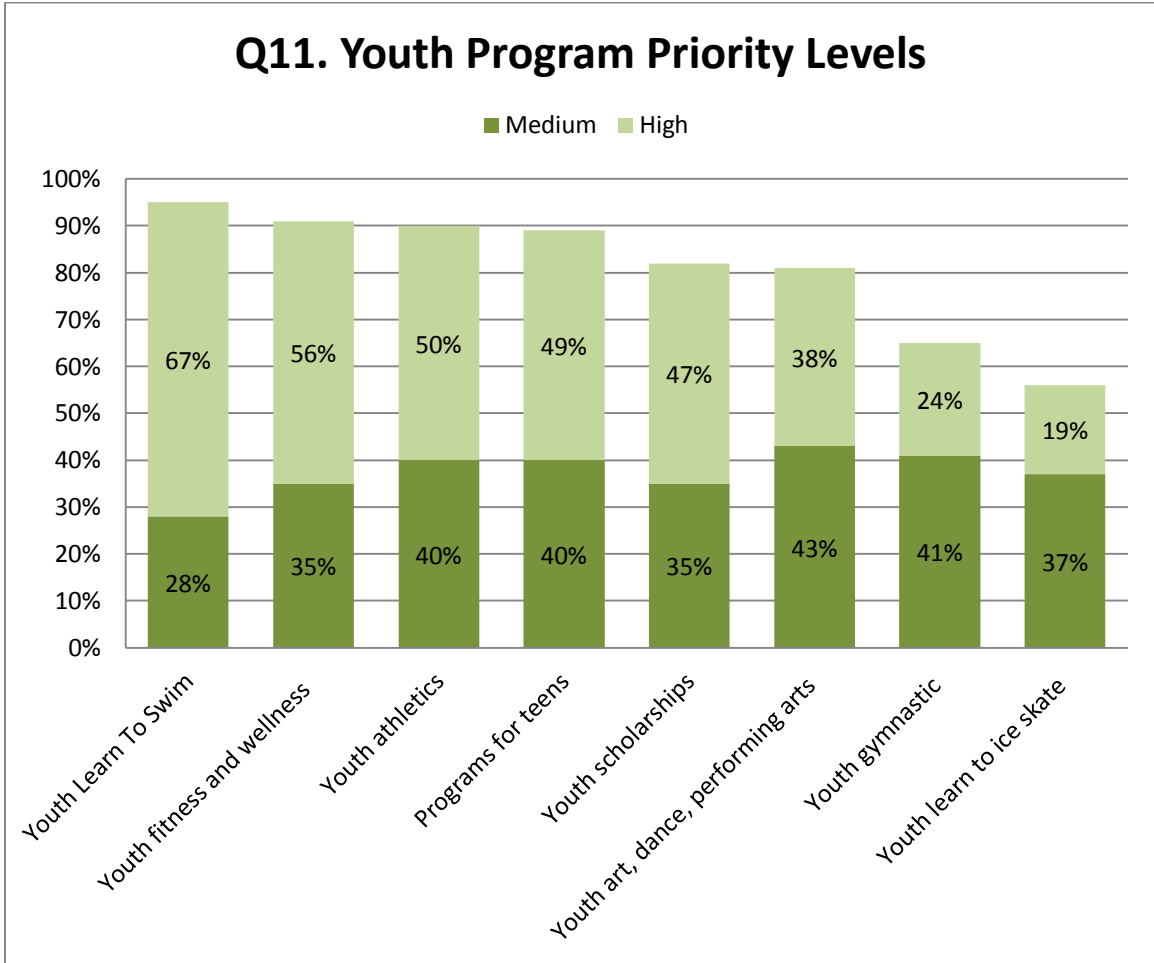
Q5. Park Amenity Priority Levels





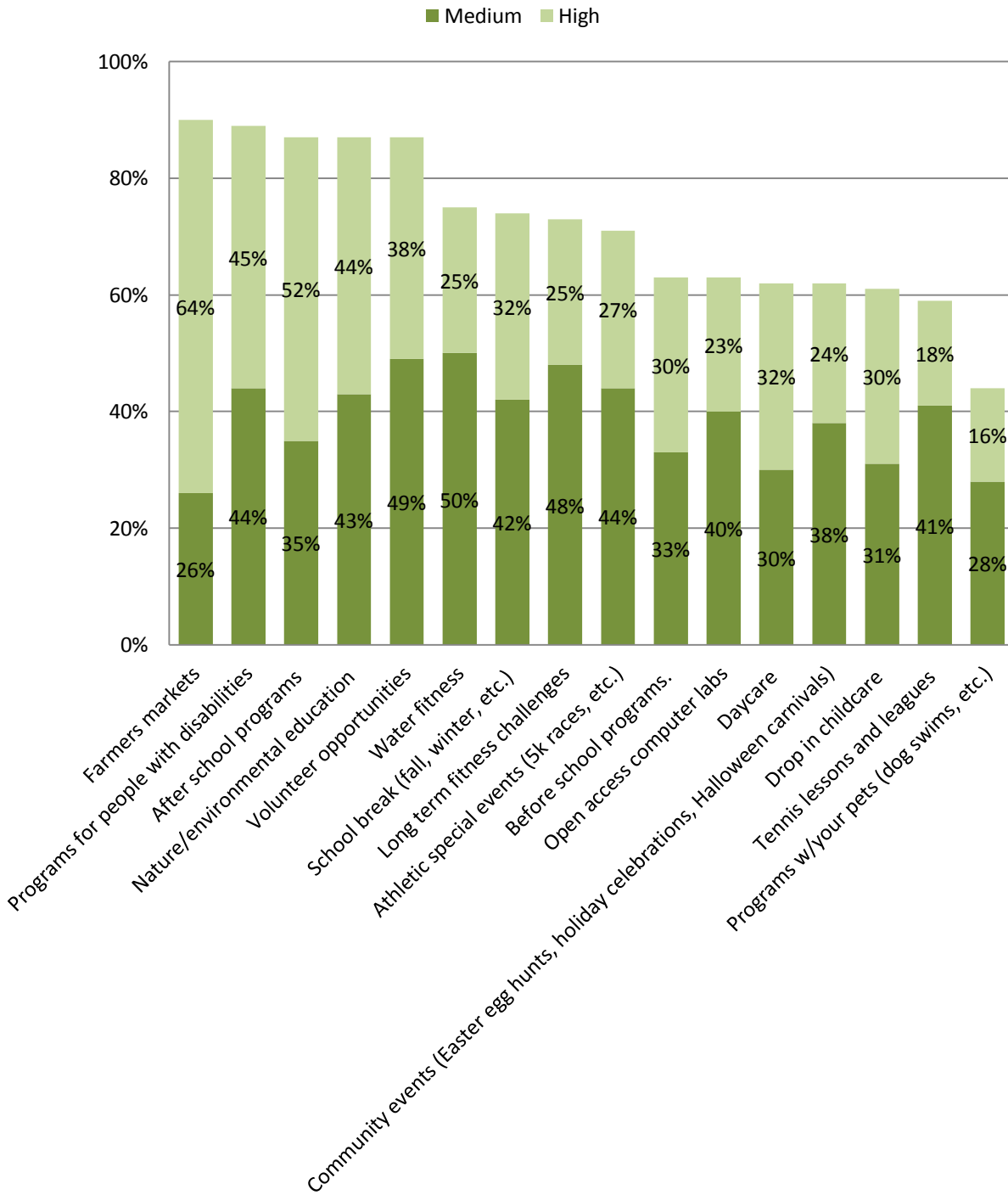
Q9. Recreation Amenity Priority Levels



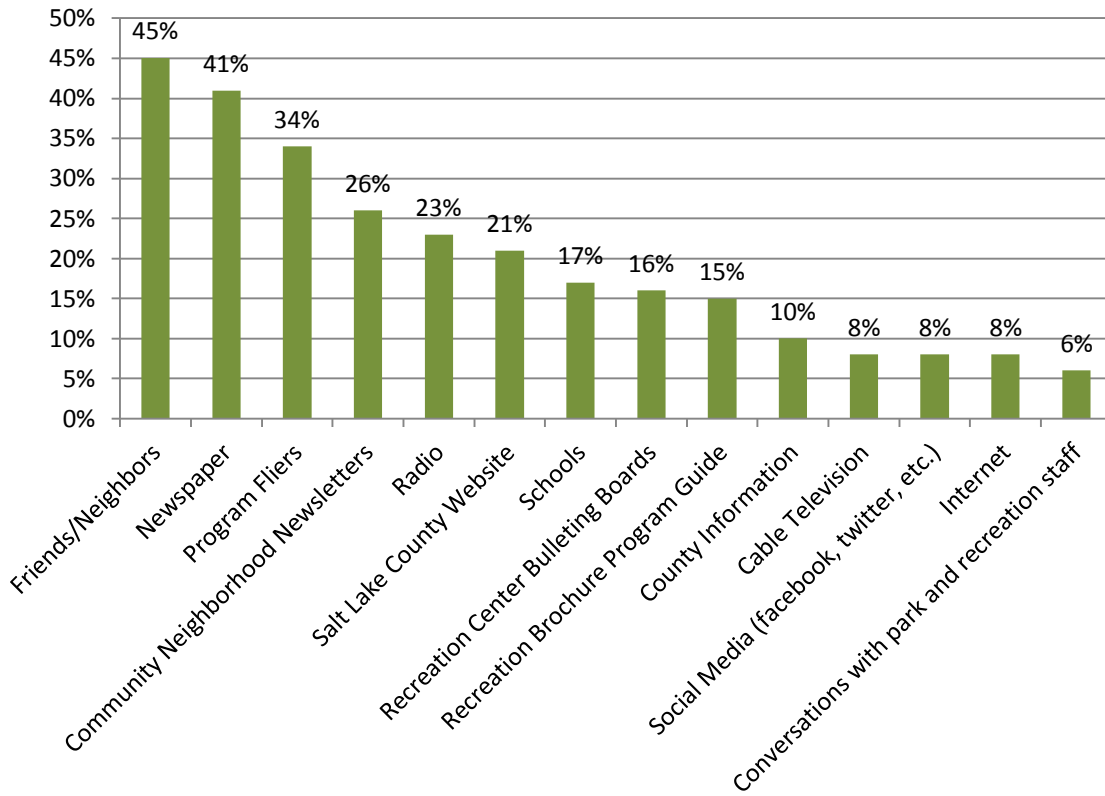


North Planning District Salt Lake County Parks and Recreation

Q15. Service Priority Levels



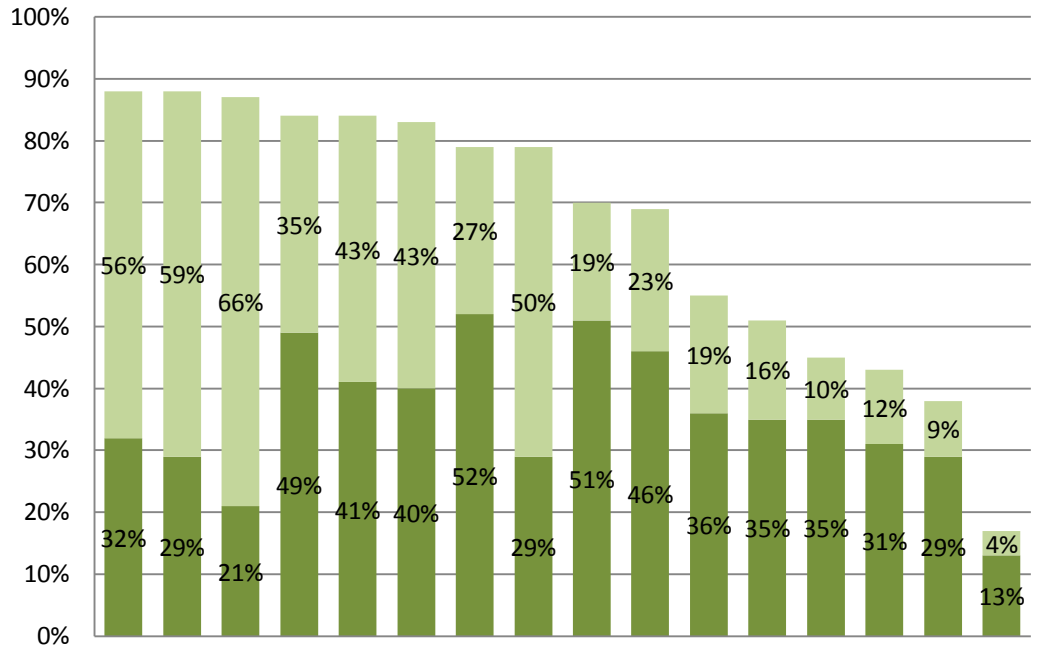
Q20. How learned about Salt Lake County Parks and Recreation Programs and Services



North Planning District Salt Lake County Parks and Recreation

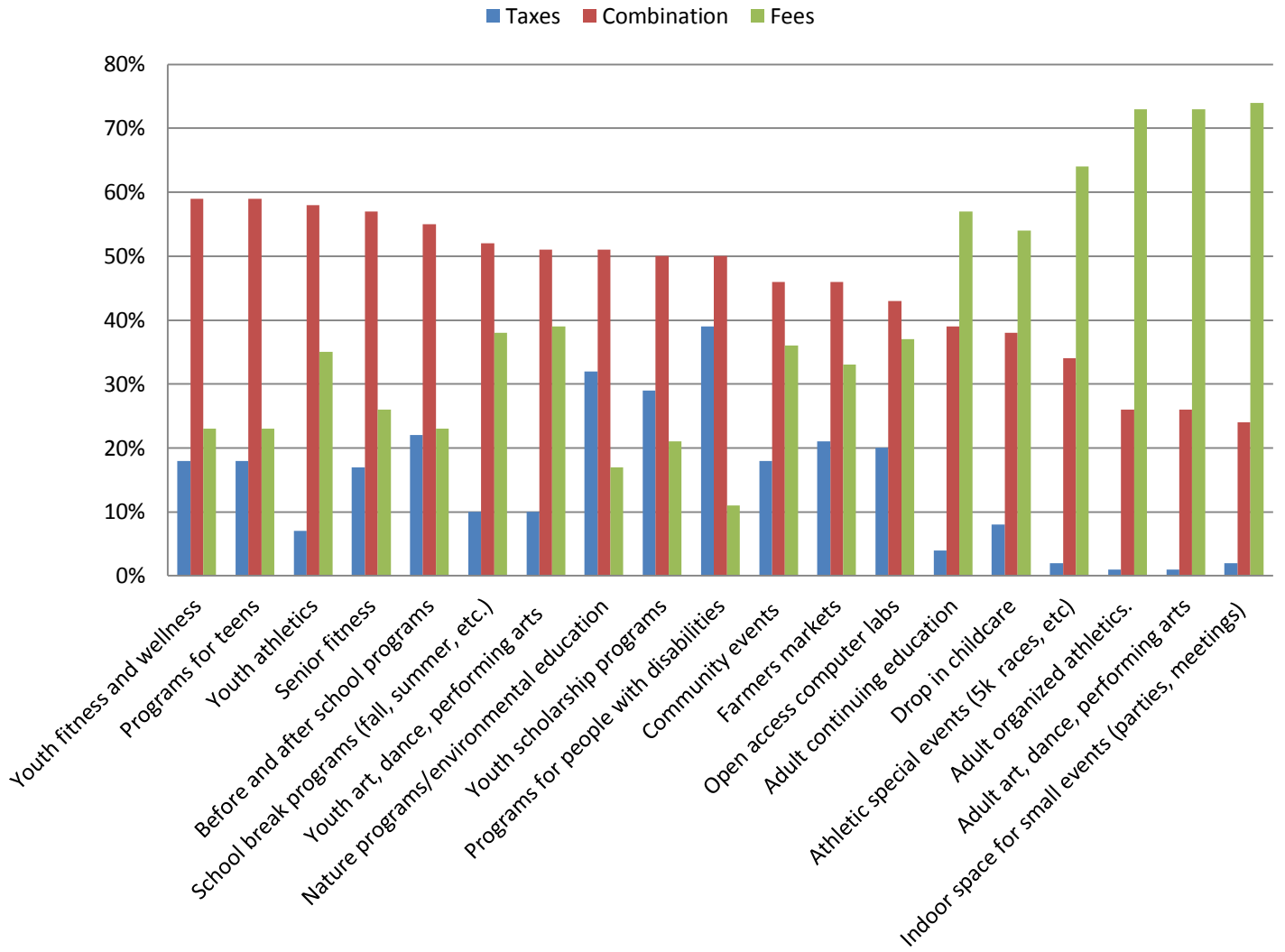
Q21. Action Priority Areas

■ Medium ■ High

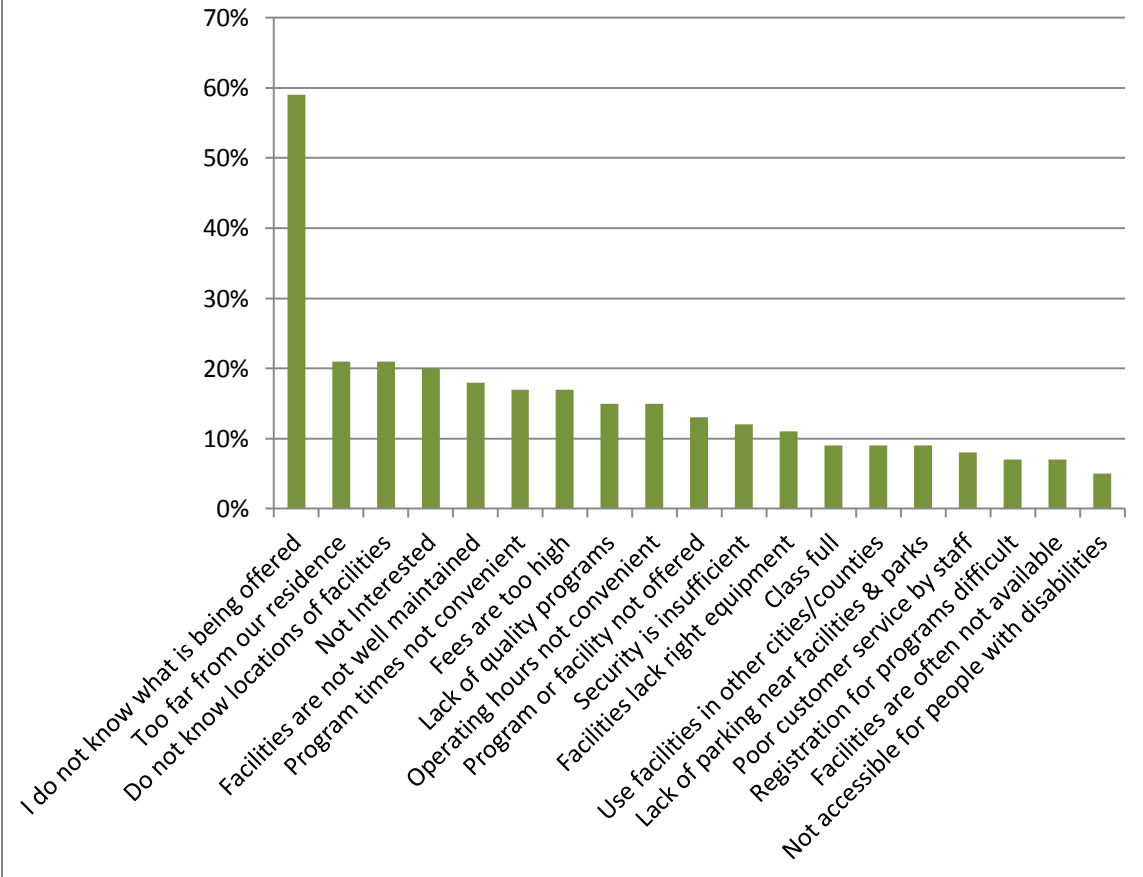


North Planning District Salt Lake County Parks and Recreation

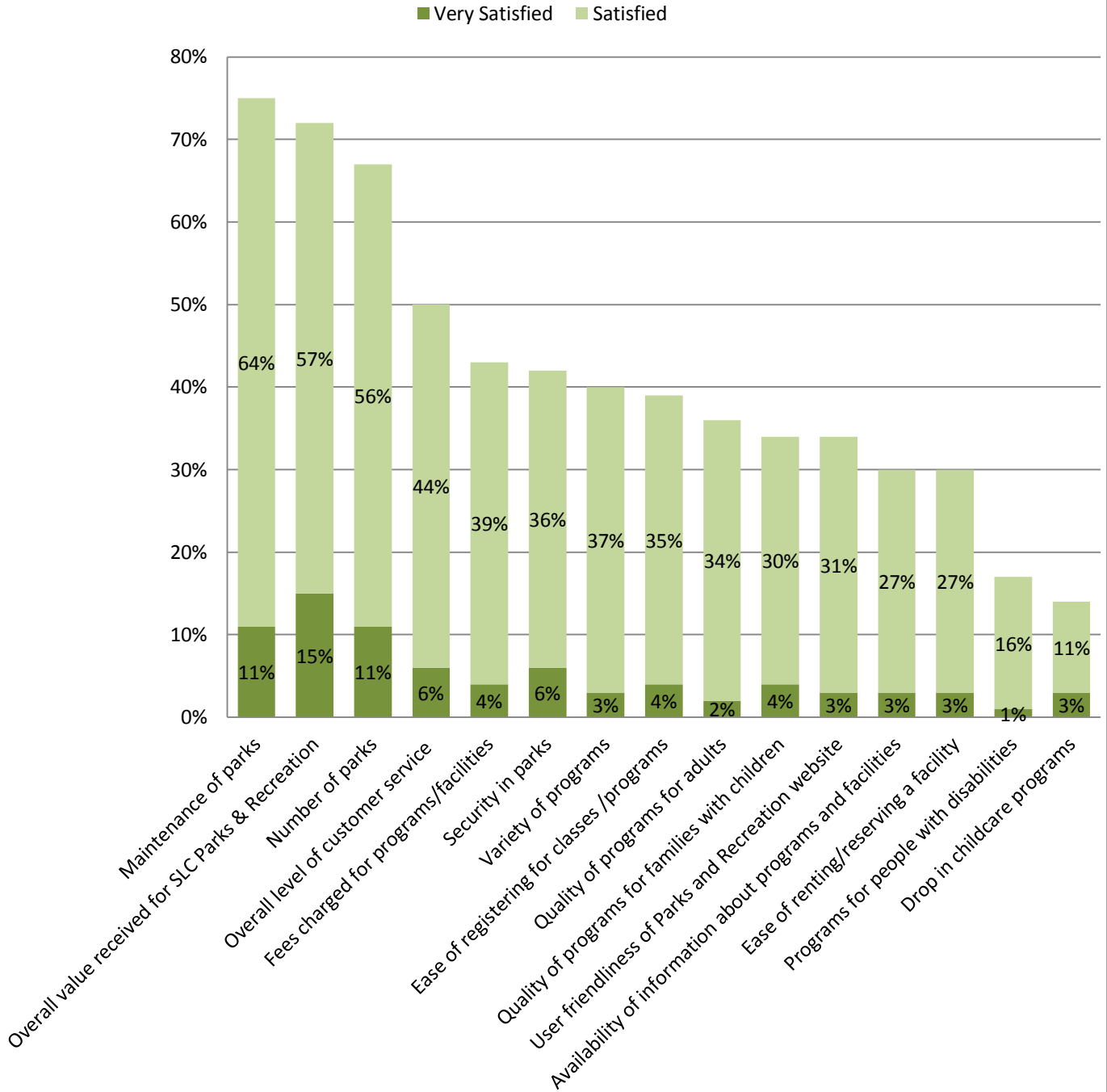
Q23. Cost to run program should be paid with taxes, combination of taxes and user fees, or user fees



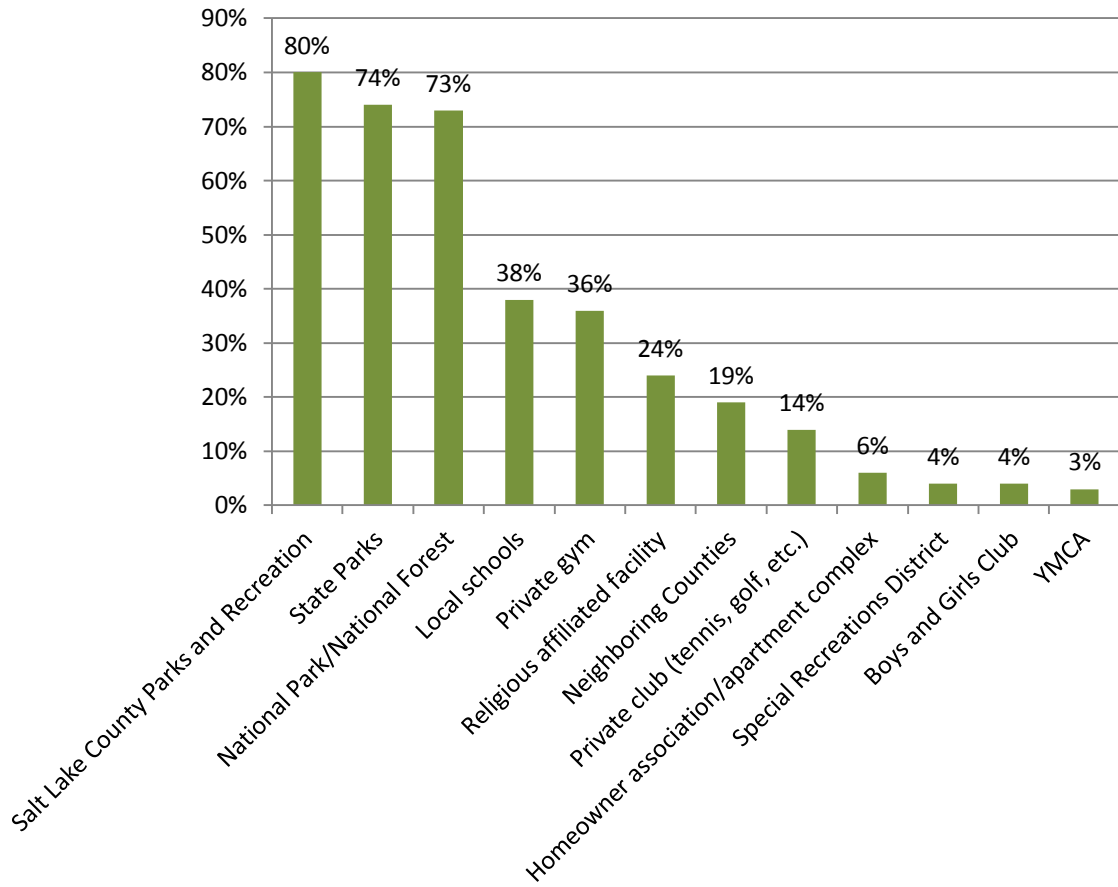
Q24. Reasons That Prevent People From Using Salt Lake County Parks & Recreation Facilities and Programs



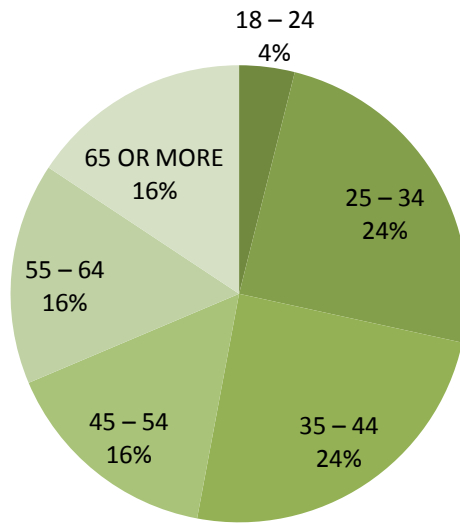
Q25. Salt Lake County Parks and Recreation Services Satisfaction Levels



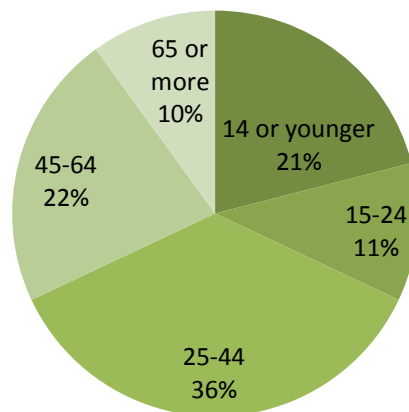
Q28. Organizations Used by Household in the Last Twelve Months



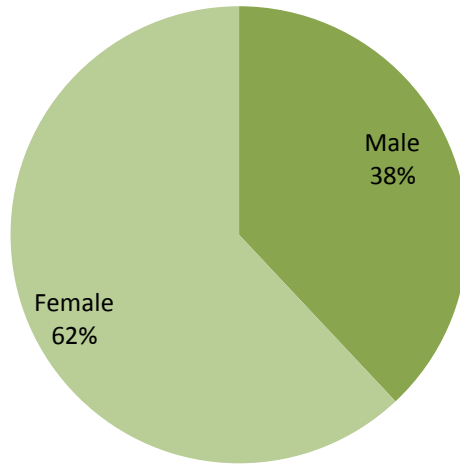
Q35. Ages of Respondents



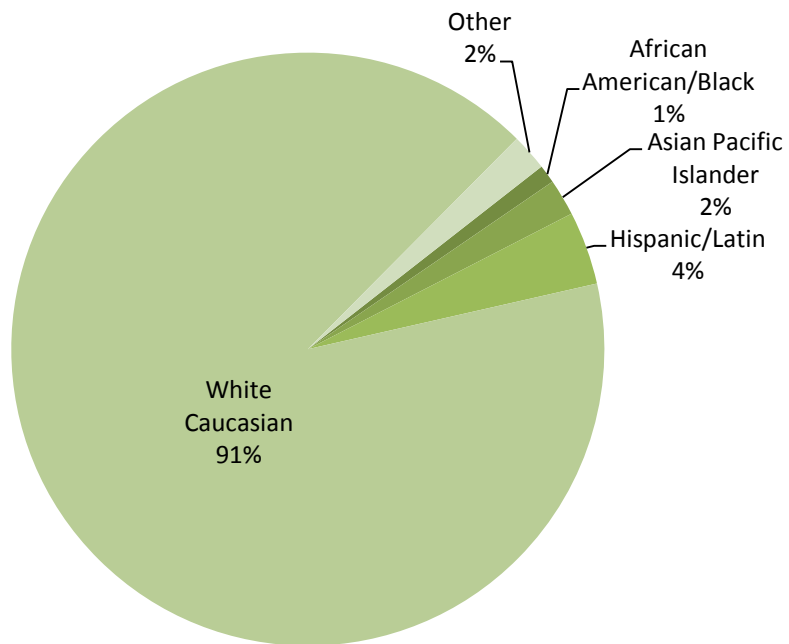
Q36. Household Composition by Age Categories



Q 37. Gender of Respondents



Q38. Racial or Ethnic Identification



Q41. What is your zip code?

