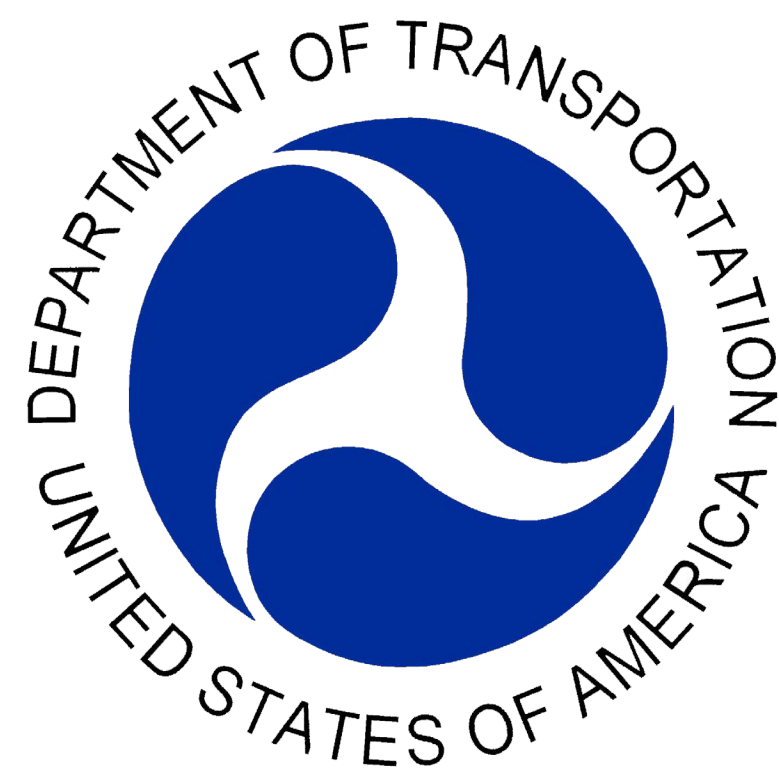


FLAP-Upper Mill Creek Canyon Road Improvements Project

Public Open House #1 | November 9, 2021 | 4:30 PM to 7:00 PM | Millcreek City Hall

WELCOME

THANK YOU FOR JOINING US



PROJECT PARTNERS AND FLAP

Project Partners

- + Federal Highway Administration Central Federal Lands Highway Division (FHWA-CFLHD)
- + Salt Lake County
- + Millcreek
- + US Forest Service (USFS), Uinta-Wasatch-Cache National Forest

Federal Lands Access Program (FLAP)

- + Improve transportation facilities owned or maintained by a non-federal agency providing access to, adjacent to, or location within federal lands (typically national parks, forests, wildlife refuges, BLM lands, BOR lands, or USACE lands)
- + Improve transportation facilities that provide access to, are adjacent to, or are located within federal lands
- + Emphasis on high-use federal recreation sites and federal economic generators
- + Supplements State and local resources for public roads, transit systems, and other transportation facilities
- + Thirteen (13) FLAP projects have been completed or are in progress in Utah
- + Federal and local match: costs are split between federal and local project partners

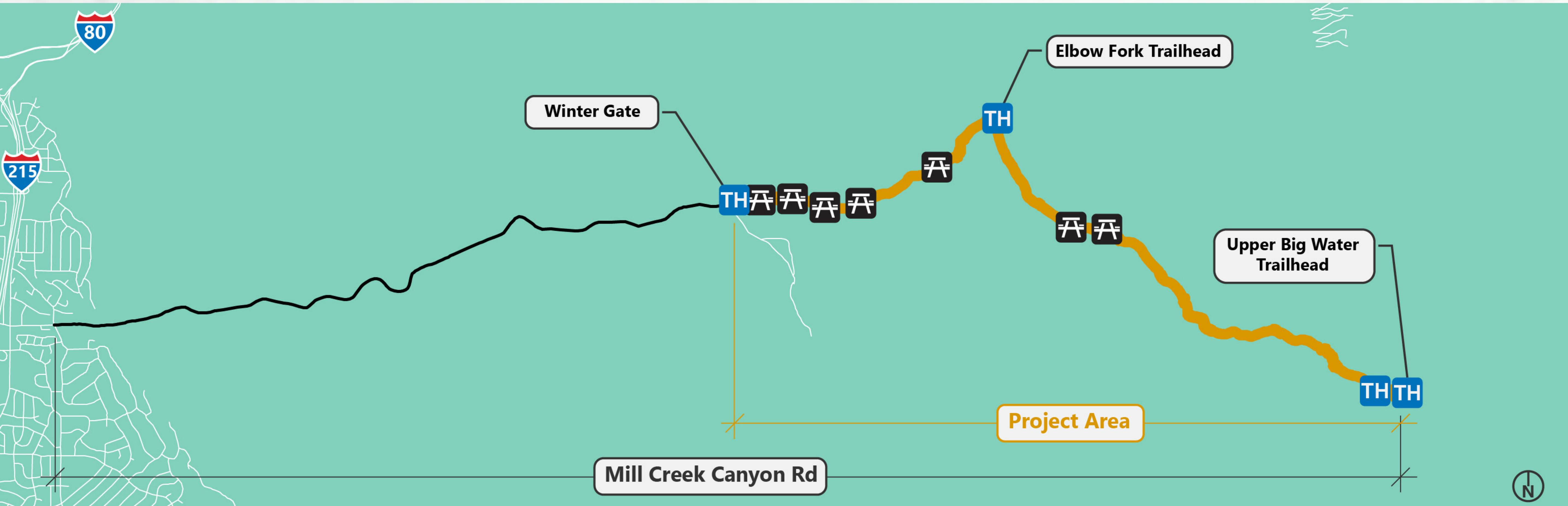
PROJECT OVERVIEW AND ESTIMATED COST

Major Project Elements

- + Reconstruct 4.5 miles of Mill Creek Canyon Road
- + Picnic area and trailhead parking improvements
- + Bicycle and pedestrian safety improvements
- + Drainage and watershed improvements

Project Funding

- + FLAP Contribution: \$15.4M
- + Local Contribution: \$4.2M
- + Total: \$19.6M



The **purpose of the project** is to enhance access to the recreation opportunities along Mill Creek Canyon Road in the Uinta-Cache-Wasatch National Forest.

Project needs include:

- + Inconsistent roadway width (single lane in some areas)
- + Roadway safety concerns, including inadequate sight distance, tight curves, and steep grades
- + Traffic congestion at the Upper Big Water Trailhead
- + Structures nearing the end of their service life
- + Inadequate directional signage
- + Lack of crosswalks at trailheads
- + Bicyclist safety



WHAT RESOURCES ARE CONSIDERED?

- + The National Environmental Policy Act (NEPA) requires federal agencies to assess the environmental effects of their proposed actions prior to making decisions.
- + Requires agency and public participation
- + Requires disclosure about the action, alternatives, environmental effects, and mitigation
- + FHWA-CFLHD is completing a documented categorical exclusion in accordance with Title 23 CFR § 771.117

Resources Considered

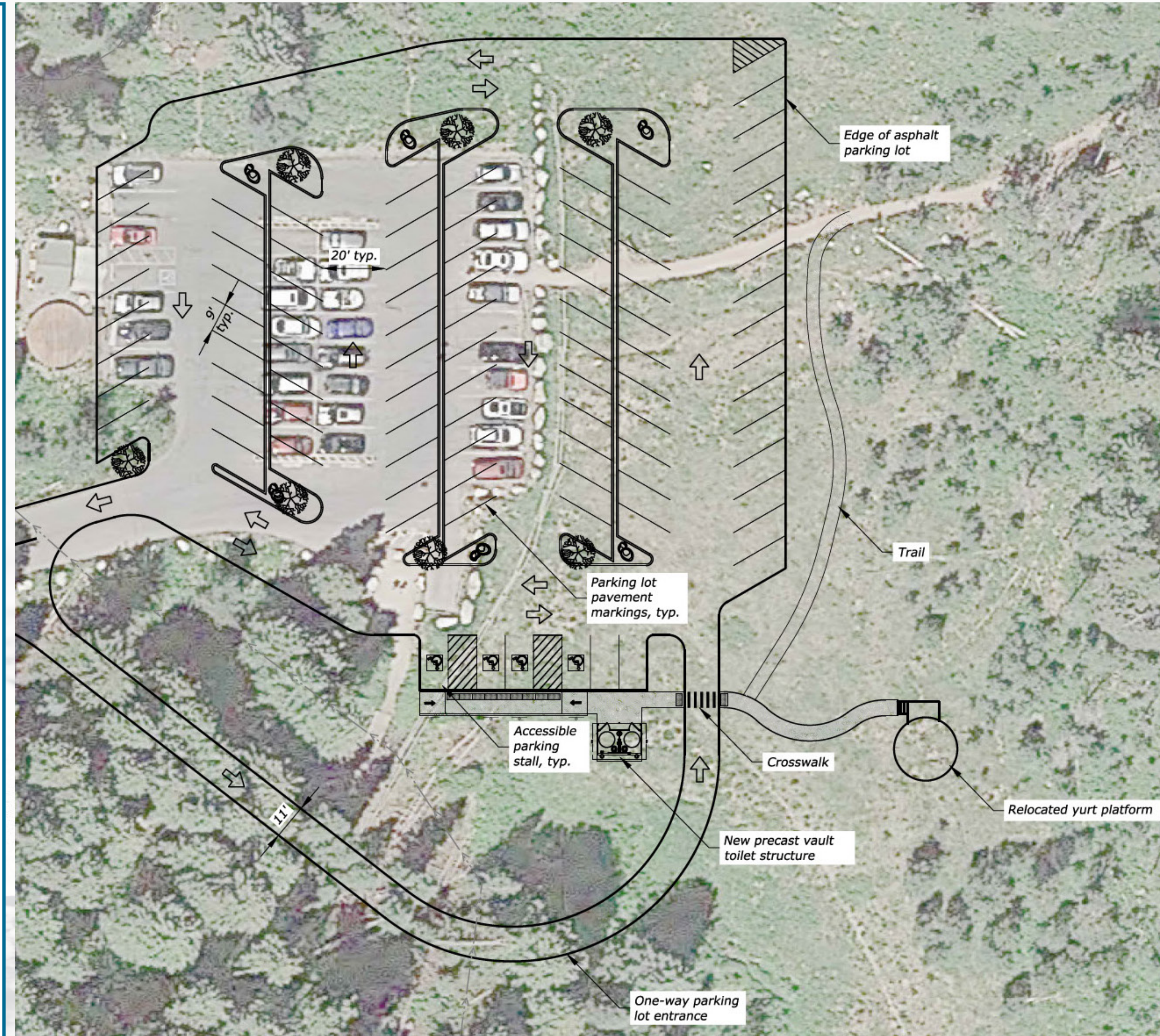
- + Areas of Critical Environmental Concern
- + Air Quality
- + Cultural
- + Cumulative Impacts
- + Environmental Justice
- + Farmlands
- + Floodplains
- + Geologic Resources and Soils
- + Hazardous Materials/Waste
- + Land Use and Planning
- + Noise
- + Paleontological
- + Parks/Recreational
- + Right-of-Way
- + Section 6(f)
- + Section 4(f)
- + Social Resources
- + Threatened/ Endangered Species (MBTA)
- + Transportation
- + Utilities
- + Vegetation and Noxious Weeds
- + Visual Resources/Aesthetics
- + Water Quality
- + Wetlands and Other Waters of the US
- + Wildlife (terrestrial and aquatic)

+ Reconstruct Mill Creek Canyon Road

- Big Water Trailhead to Elbow Fork (3.1 miles) with a 24-foot paved surface
- Elbow Fork to Winter Gate (1.4 miles) with 29-foot paved surface

+ Formalize picnic area parking and trailhead areas. May include:

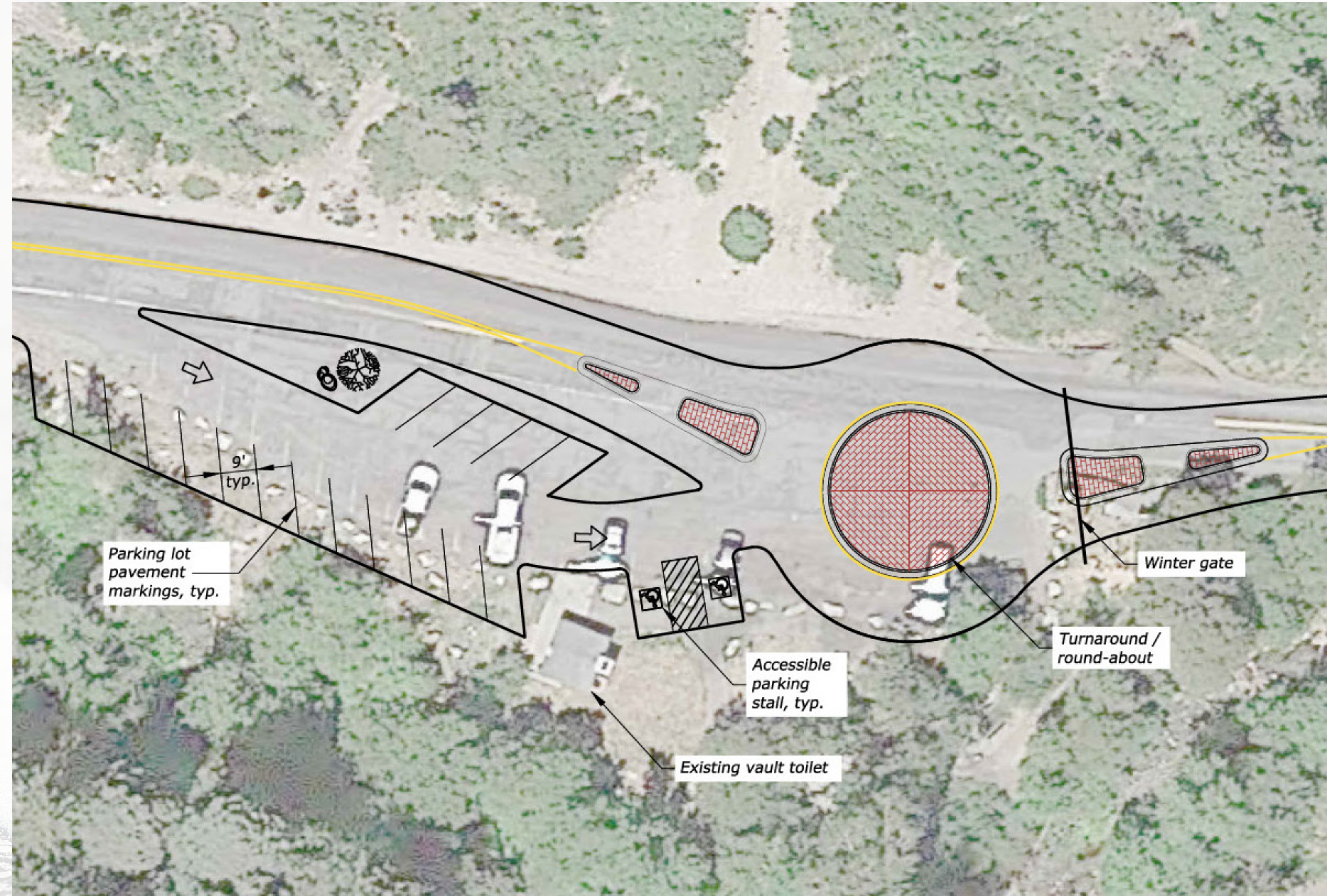
- Big Water Trailhead
- Alexander Basin Trailhead
- Clover Springs Picnic Area
- Fir Crest Picnic Area
- Elbow Fork Trailhead
- Winter Gate Parking/Trailhead



Conceptual design at the Upper Big Water Trailhead. The design is subject to refinement and change during project development.

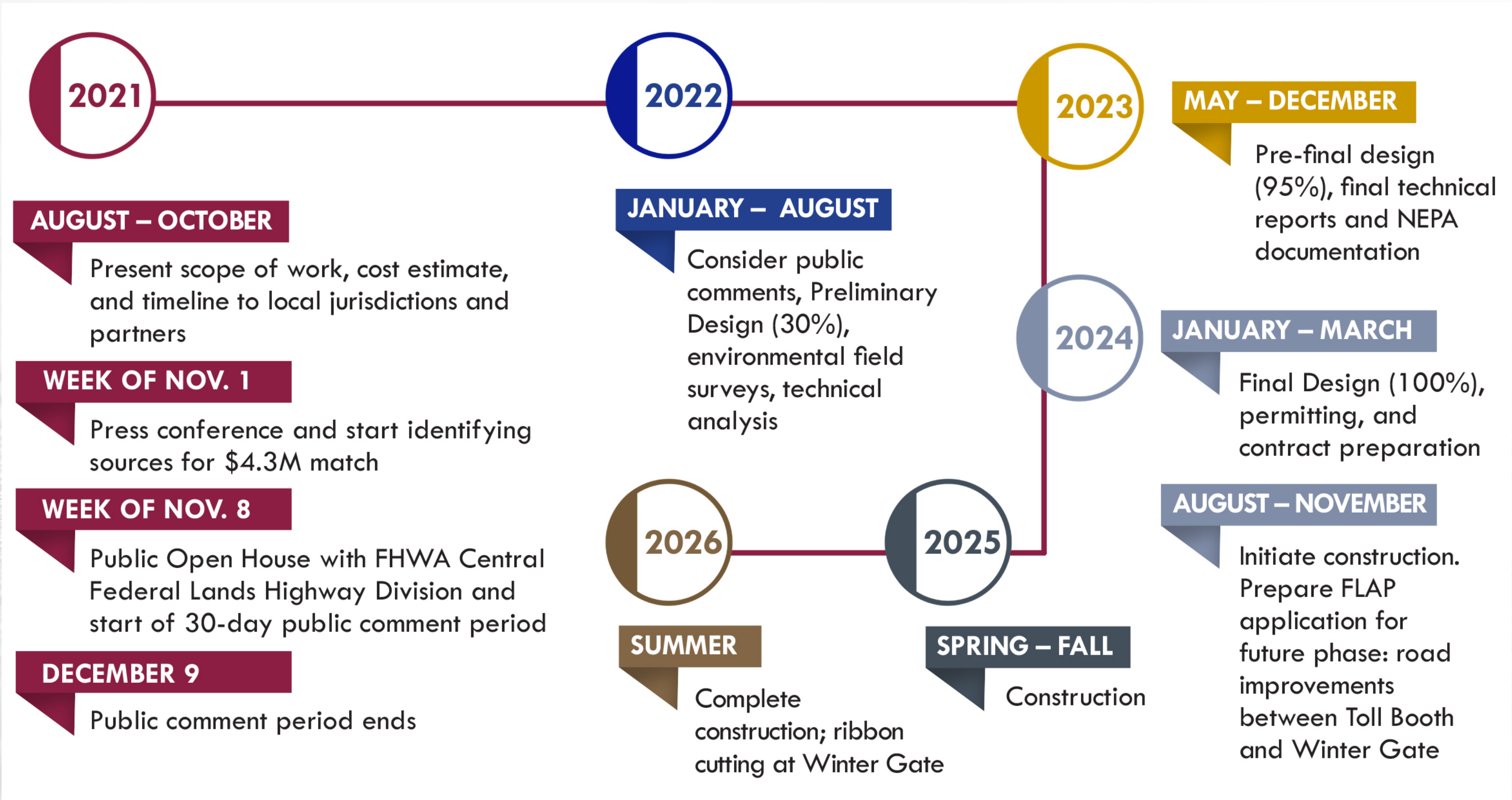
PROPOSED IMPROVEMENTS

- + **Implement roadway safety and pedestrian crossing safety measures:** Improvements could include signing, striping, and installing guardrails at appropriate locations.
- + **Improve bicyclist safety:** An uphill climbing lane will be added between Winter Gate and Elbow Fork.
- + **Improve roadway drainage and snow storage:** Recently installed box culverts will be extended and headwalls and wingwalls added to improve roadway safety. The parking lot improvements will better accommodate snow storage and plow operations.
- + **Realign roadway and improve watershed functioning at Thousand Springs:** The road through this section will be widened and the streambed channel will be realigned to address safety issues.
- + **Install a 2-inch diameter conduit:** This will allow for future improvements for emergency communication and future traffic monitoring.



Conceptual design at the Winter Gate. The design is subject to refinement and change during project development.

SCHEDULE



WE WANT TO HEAR FROM YOU

We Want to Hear from You

Please provide comments by December 10, 2021. Your comments will be considered throughout project development and help guide design decisions.

- + What are your questions, concerns, and comments about the project?
- + Are you aware of sensitive resources that may be affected by the project?
- + Are you aware of individuals, groups, or organizations who should know about the project?

Stay Engaged, Ask Questions, and Provide Input

- + **Project website:** <https://slco.org/millcreekcanyon>
- + **Questions/Comments:**
 - Email: millcreekroad@slco.org
 - USPS Mail: Salt Lake County Regional Development, c/o Helen Peters, 2001 S. State Street S2-100, PO Box 144575, Salt Lake City, UT 84114
- + **Public meeting:** The preliminary (30%) design will be presented at a public meeting in spring 2022.