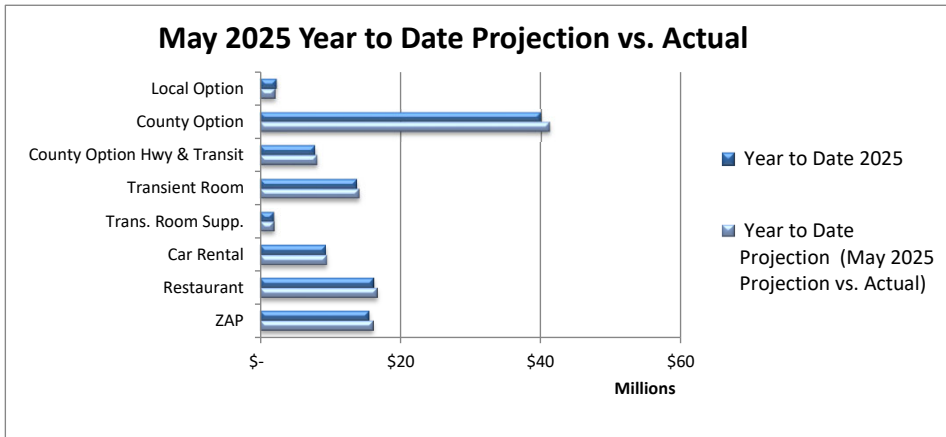
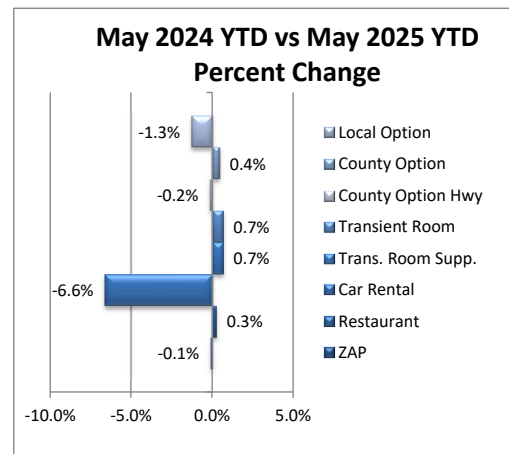
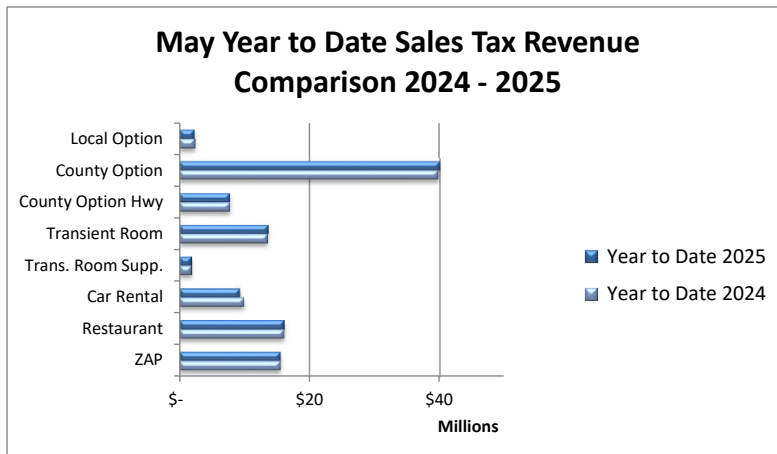


Actual Sales Tax Receipts versus Projected Year to Date through May 2025



Tax	Year to Date 2025	Year to Date Projection (May 2025 Projection)	Difference	Diff. %
Local Option	\$ 2,233,142	\$ 2,091,300	\$ 141,842	6.8%
County Option	\$ 39,942,242	\$ 41,148,000	\$ (1,205,758)	-2.9%
County Option Hwy & Transit	\$ 7,740,296	\$ 8,021,500	\$ (281,204)	-3.5%
Transient Room	\$ 13,610,405	\$ 13,913,900	\$ (303,495)	-2.2%
Trans. Room Supp.	\$ 1,883,793	\$ 1,924,900	\$ (41,107)	-2.1%
Car Rental	\$ 9,257,657	\$ 9,379,000	\$ (121,343)	-1.3%
Restaurant	\$ 16,080,951	\$ 16,565,900	\$ (484,949)	-2.9%
ZAP	\$ 15,485,027	\$ 16,043,700	\$ (558,673)	-3.5%
TOTAL	\$ 106,233,513	\$ 109,088,200	\$ (2,854,687)	-2.6%

Salt Lake County Year to Date Sales Tax Compared to Prior Year Year to Date Through May 2025

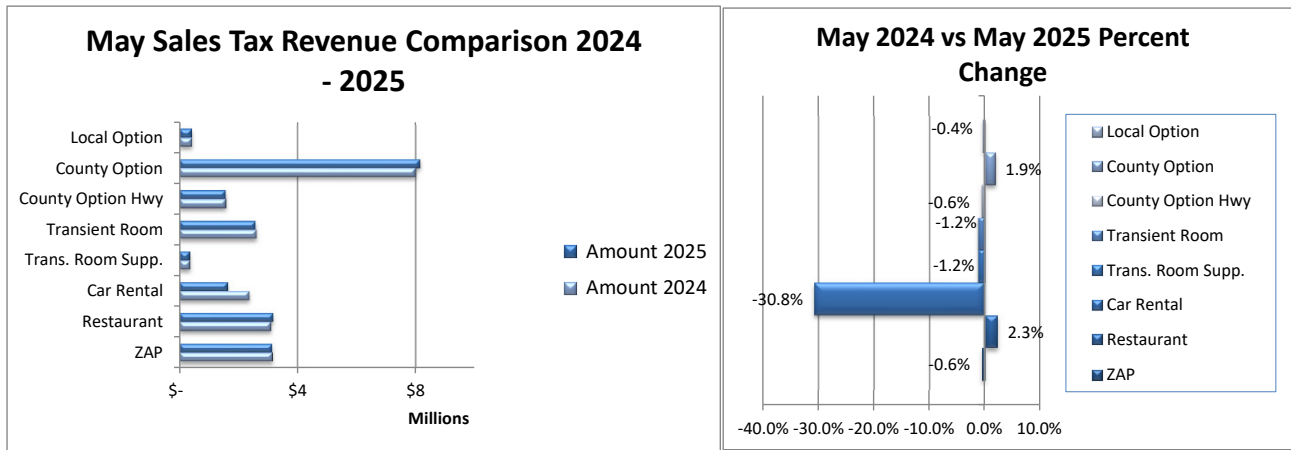


Tax	Year to Date 2025	Year to Date 2024	Difference	Diff. %
Local Option	\$ 2,233,142	\$ 2,262,644	\$ (29,501)	-1.3%
County Option	\$ 39,942,242	\$ 39,769,341	\$ 172,902	0.4%
County Option Hwy	\$ 7,740,296	\$ 7,753,052	\$ (12,755)	-0.2%
Transient Room	\$ 13,610,405	\$ 13,519,763	\$ 90,642	0.7%
Trans. Room Supp.	\$ 1,883,793	\$ 1,871,248	\$ 12,545	0.7%
Car Rental	\$ 9,257,657	\$ 9,915,336	\$ (657,679)	-6.6%
Restaurant	\$ 16,080,951	\$ 16,040,177	\$ 40,774	0.3%
ZAP	\$ 15,485,027	\$ 15,503,148	\$ (18,121)	-0.1%
TOTAL	\$ 106,233,513	\$ 106,634,707	\$ (401,194)	-0.4%

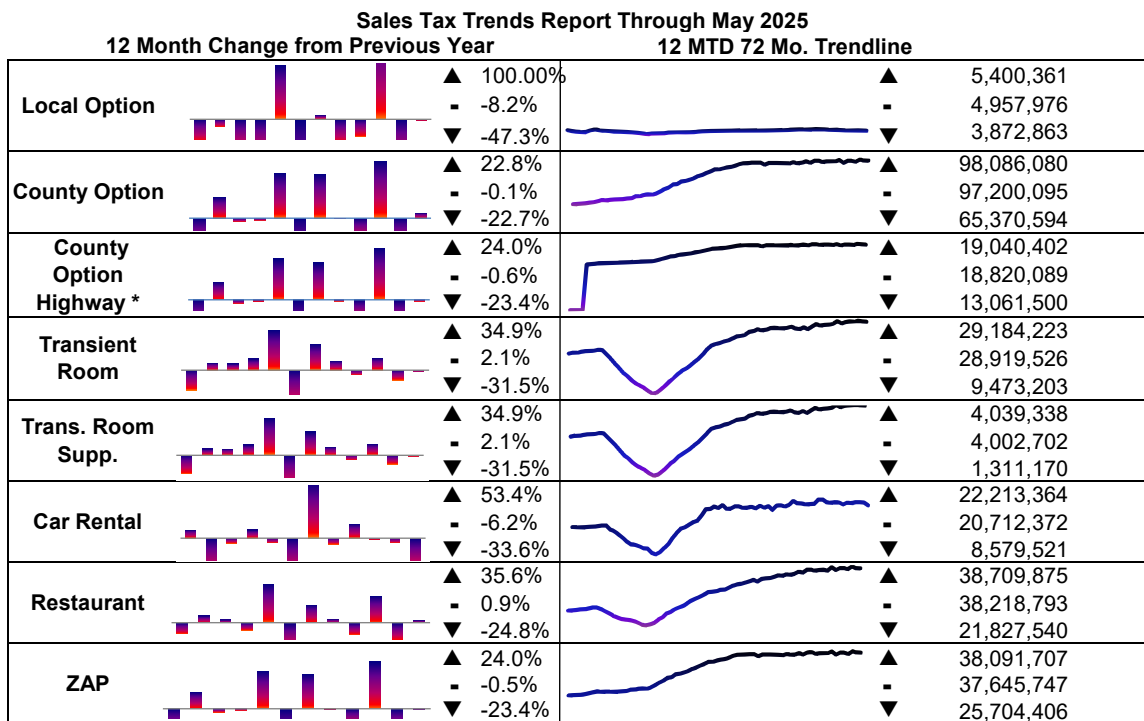
Prepared by: Salt Lake County Mayor's Financial Administration, Planning & Budget

Salt Lake County Monthly Sales Tax Compared to Prior Year

May 2025



Tax	Amount 2025		Amount 2024		Difference	Diff. %
Local Option	\$	424,672	\$	426,486	\$ (1,814)	-0.4%
County Option	\$	8,158,433	\$	8,006,737	\$ 151,696	1.9%
County Option Hwy	\$	1,567,753	\$	1,577,586	\$ (9,833)	-0.6%
Transient Room	\$	2,577,212	\$	2,609,289	\$ (32,078)	-1.2%
Trans. Room Supp.	\$	356,708	\$	361,147	\$ (4,440)	-1.2%
Car Rental	\$	1,635,807	\$	2,363,033	\$ (727,226)	-30.8%
Restaurant	\$	3,168,607	\$	3,098,758	\$ 69,848	2.3%
ZAP	\$	3,135,204	\$	3,153,104	\$ (17,900)	-0.6%
TOTAL	\$	21,024,395	\$	21,596,141	\$ (571,746)	-2.6%



Explanation of 12 Month Change from Previous Year Section

This section presents a series of month-over-month changes from prior year, as well as 12 month to 12-month percentage change.

Bar Chart. Each bar represents percentage change of one month of the most recent 12 months, compared to the same month one year previous.

High/Current/Low Table. This table shows the highest and lowest month-over-month changes in the most recent 12 months. It also shows in the center the "current" value, the most recent 12 months compared to the same 12 months one year previous (12 over 12).

Interpreting the trend data. The bar chart will show fluctuations are a normal part of the distribution process. While any given month does not make a trend, if the values are predominantly one way or the other, this indicates a trend in that direction. The 12 over 12 number gives an indication of what the annual growth

Explanation of 12 Months To Date 72 Month Trendline Section

This section is based on a series of moving 12-month totals.

The value of the 12-month moving total is twofold. First, totalling 12 months helps smooth out the distributional fluctuations. Second, the 12-month total gives you a proxy "annual" figure showing what annual revenue would be if the year ended in the current month.

Line Graph and High/Current/Low Table. The line graph is self-explanatory. The high/current/low table puts the current figure in the context of historical figures.

* County option sales and use tax for highways and public