

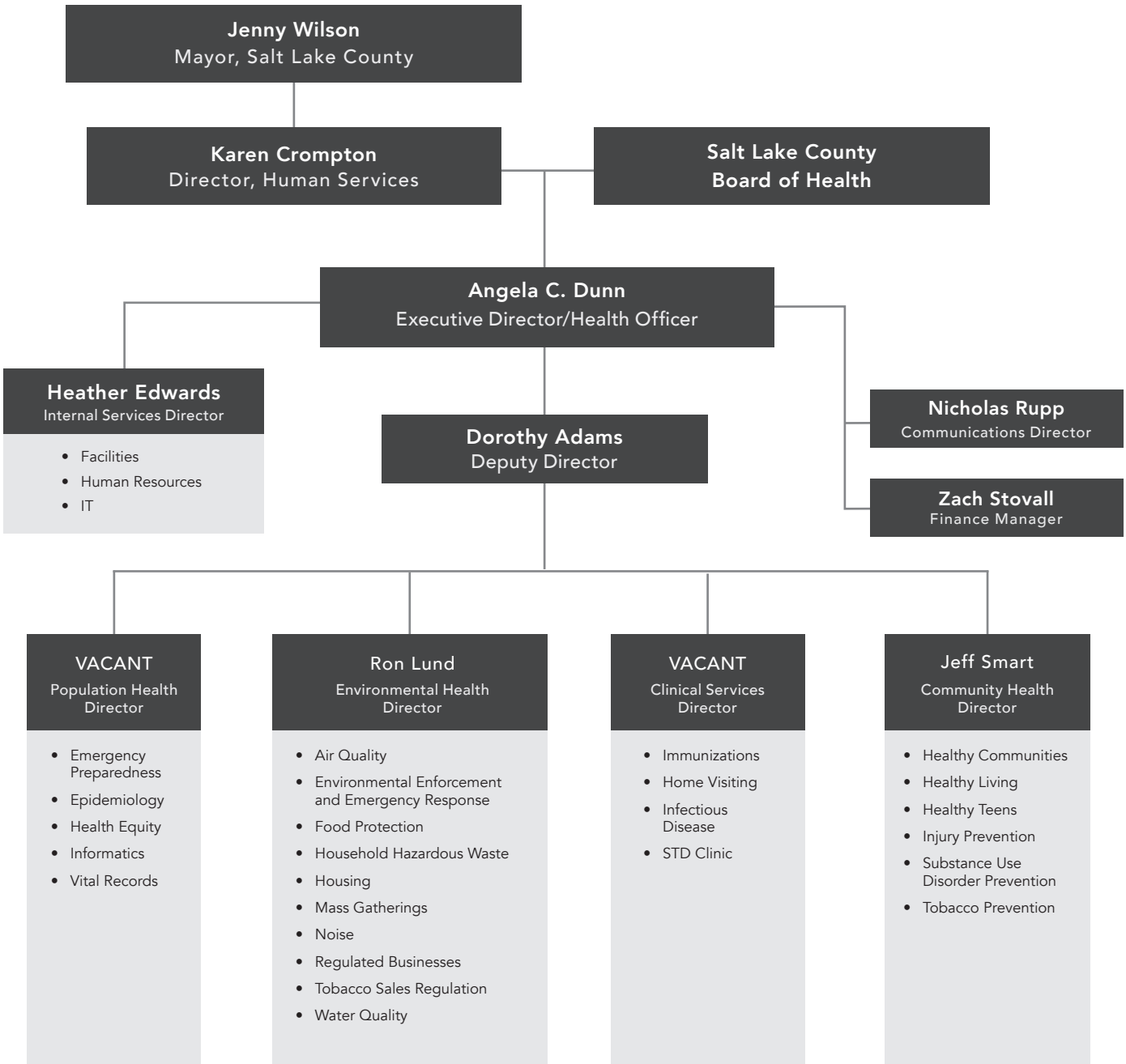


21

SL SALT LAKE COUNTY
HEALTH DEPARTMENT

ANNUAL REPORT

2021 Organization

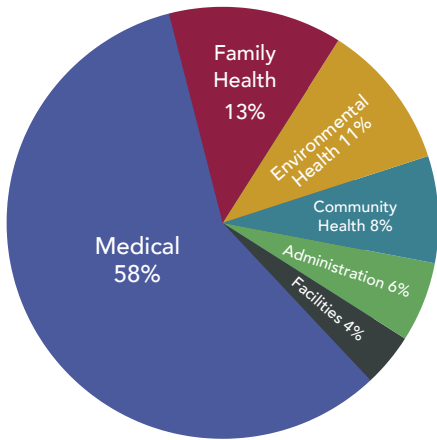


BOARD OF HEALTH

Stacey Bank
Arlyn Bradshaw
Michele Corigliano, 2nd Vice Chair
Rylee Curtis
Robert Dahle
Kalina Duncan, 1st Vice Chair
Dan Eckersley
Kencee Graves

Roderic Land
Pimmie Lopez
Leticia Medina
Mollie Nordgren
Dan Poulson
Mimi Shen
Dorothea Verbrugge, Chair

Finances

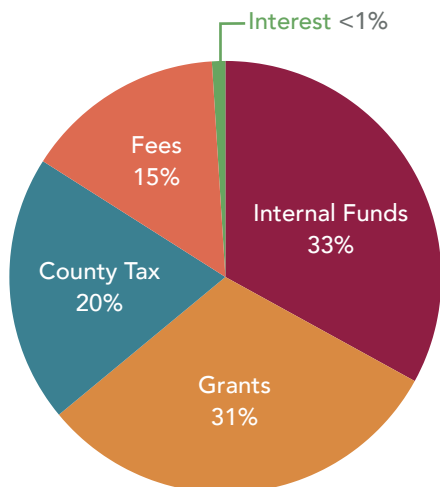
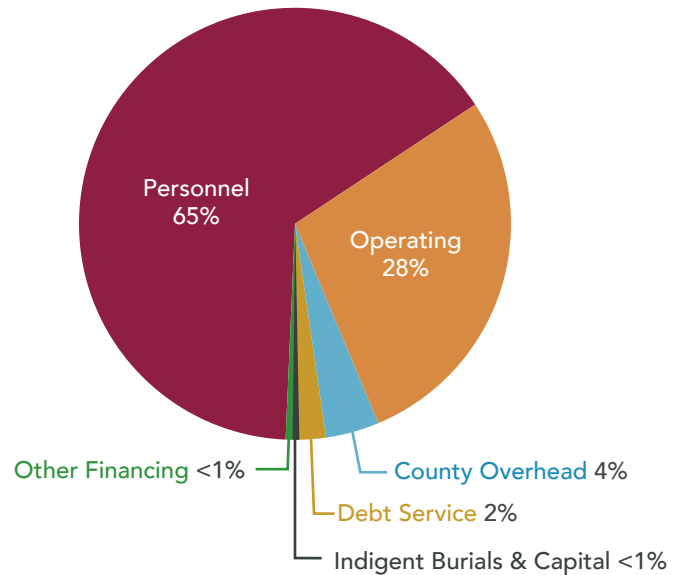


Expenses

Facilities	\$3,107,621	4%
Administration	\$4,723,867	6%
Community Health	\$6,294,351	8%
Environmental Health	\$9,116,377	11%
Family Health	\$10,229,528	13%
Medical	\$46,915,387	58%
Total	\$80,387,131	100%

Expenses

Personnel	\$52,405,649	65%
Operating	\$22,994,346	28%
County Overhead	\$3,215,170	4%
Debt Service	\$1,383,356	2%
Indigent Burials	\$107,850	<1%
Capital	\$192,050	<1%
Other Financing	\$88,711	<1%
Total	\$80,387,131	100%



Income

Internal Funds	\$30,747,356	33%
Grants	\$28,965,955	31%
County Tax	\$17,885,854	20%
Fees	\$14,374,226	15%
Interest	\$137,285	<1%
Total	\$92,110,716	100%

2021 Timeline

JANUARY

JANUARY 6

SLCoHD opens its first drive-thru mass vaccination site at Maverik Center and its first walk-in mass vaccination site at Redwood Recreation Center (both for nonhospital healthcare workers).



JANUARY 7

SLCoHD begins vaccinating emergency responders like police officers and firefighters at agency-specific pop-up clinics (EMS first responders were already eligible for vaccine in December 2020 as healthcare workers).

JANUARY 8

Utah announces that people 70 and older will be eligible for vaccine beginning January 18, joining healthcare workers (eligible since December 2020), first responders (eligible this week), and K–12 school employees (eligible next week).



JANUARY 11

K–12 school employees become eligible for vaccine; Community Nursing Services (CNS) hosts district-specific clinics for school personnel.

JANUARY 13

SLCoHD opens online scheduling for healthcare workers (who, to date, had been scheduling over the phone) and people 70+ for appointments beginning January 18 at Mountain American Expo Center (walk-in) and Maverik Center (drive-thru); tens of thousands of people—many more than are eligible for vaccine—overwhelm and crash the online system within minutes. Family members and friends of adults over 70 all tried logging on, usually multiple people for every eligible senior, so the system saw much more traffic than planned and could not keep up. By 9:00 a.m., the scheduling system was back online and by 10:00 a.m. over 15,000 people had made an appointment for between January 18 and February 28.

70+ and live in SLCo?

Protect yourself against COVID!

Vaccine appointments are available **now**.

Visit SaltLakeHealth.org to schedule.

JANUARY 15

SLCo establishes a waitlist (with online signup) for eligible people who could not get a vaccine appointment in the currently available block of appointments (January 18–February 28). By the end of the month, more than 55,000 people will sign up on the waitlist.

JANUARY 18

Utahns 70 and older become eligible for vaccine.

SLCoHD opens Mountain American Expo Center (MAEC) in Sandy as a walk-through, second mass vaccination site, joining the Maverik Center drive-thru site.

JANUARY 19

SLCoHD has administered more than 21,000 vaccines in less than 3 weeks.

JANUARY 27

SLCoHD begins using two “Mobile Health Center” RVs to provide vaccines directly in communities.



FEBRUARY

FEBRUARY 4

The state announces that people 65+ and people 18+ with specific medical conditions will be eligible for vaccine on March 1.

FEBRUARY 8

SLCoHD opens the Salt Palace as a walk-through, third mass vaccination site, joining MAEC (walk-through) and Maverik Center (drive-thru).

FEBRUARY 16

SLCoHD launches the “This Is Our Shot” vaccination campaign.



FEBRUARY 17

A major winter storm cancels all scheduled appointments at mass vaccination sites (MAEC, Maverik, Salt Palace) and moves them to the same time on Sunday, February 21.

FEBRUARY 18

SLCoHD begins using age-based phases to determine access to the COVID-19 vaccine registration form. People 69+ may make a vaccine appointment today, 68+ become eligible the next day, etc.

Governor Cox unexpectedly announces that people 65+ are now eligible for vaccine immediately.

Thursday Feb 18 6pm	Friday Feb 19 6pm	Saturday Feb 20 6pm	Sunday Feb 21 6pm	Monday Feb 22 6pm
69+	68+	67+	66+	65+

FEBRUARY 22

SLCoHD opens vaccine appointment scheduling for people in the county who are 65 and older.

FEBRUARY 23

Utah updates its public health order to continue masking indoors, implement “Test to Play” (requiring COVID testing for K-12 extracurricular activities), and “Test to Stay” (requiring testing of all K-12 students and staff when a school meets a particular case threshold).

FEBRUARY 24

SLCoHD begins running vaccine social media ads in languages identified as high priority by partner organizations (in addition to the routine English and Spanish): Arabic, Chinese, Portuguese, Samoan, Somali, Tongan, and Vietnamese.

Vắc-xin COVID hiện đang ở những giai đoạn phân phối ban đầu và mọi người đều sẽ có cơ hội được tiêm chủng.

Vậy ai nên được tiêm vắc-xin?

Tất cả người lớn nên cân nhắc được tiêm chủng để ngăn ngừa nhiễm COVID.

Vắc-xin của hãng Pfizer được chấp thuận sử dụng cho những người 16 tuổi trở lên; vắc-xin của hãng Moderna được chấp thuận sử dụng cho những người 18 tuổi trở lên.

Những người bị dị ứng nghiêm trọng, bà mẹ mang thai hoặc đang cho con bú nên tham khảo ý kiến bác sĩ trước khi tiêm chủng.

FEBRUARY 25

Utah announces that people 16+ with specific medical conditions are now eligible for vaccine.

Utahns may now get vaccinated in any county, regardless of where they live.

SLCoHD begins scheduling vaccine appointments for people 55+ with qualifying medical conditions, with subsequent decades becoming eligible each day through March 1 (16+).

AGE	Eligible to schedule appointment on:
55+ <i>(born on or before Feb 25, 1966)</i>	Thursday, Feb 25 at 6pm
45+ <i>(born on or before Feb 26, 1976)</i>	Friday, Feb 26 at 6pm
35+ <i>(born on or before Feb 27, 1986)</i>	Saturday, Feb 27 at 6pm
25+ <i>(born on or before Feb 28, 1996)</i>	Sunday, Feb 28 at 6pm
16+ <i>(born on or before March 1, 2005)</i>	Monday, Mar 1 at 6pm

MARCH

- MARCH 4 SLCoHD opens vaccine appointments to everyone 50 and older, and adds additional qualifying medical conditions for people 16+.
- MARCH 15 The Utah State Legislature passes (and governor signs) HB 294, Pandemic Emergency Powers, which will eliminate all COVID-related public health orders based on 3 specific metrics: case rates, ICU utilization, and vaccine dose allocation.
- MARCH 18 Utah announces everyone 16 and older is eligible for vaccine beginning March 24.
- MARCH 19 **The Homecare & Hospice Association of Utah recognizes SLCoHD public health heroes with lawn signs delivered to SLCo Government Center.**
- MARCH 22 SLCoHD opens appointment scheduling for everyone 16+, with appointment availability beginning April 4.
- MARCH 24 SLCoHD releases “Vax Facts” graphic comparing the three available COVID vaccines to help people choose the right vaccine for them.



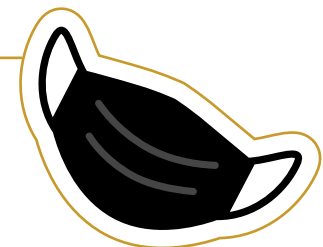
APRIL

- APRIL 6 **SLCoHD releases “I Took My Shot” social media profile frames.**
- APRIL 13 CDC and FDA pause use of Johnson & Johnson’s Janssen vaccine due to rare but serious blood clot complications.
- APRIL 15 People who have had COVID in the last 90 days may now be vaccinated.
- APRIL 16 **SLCoHD begins handing out “I got vaccinated against COVID-19” stickers in more than 10 different languages.**
- APRIL 20 The Salt Lake County Board of Health announces that Dr. Angela C. Dunn will become SLCoHD’s new executive director on June 1.
- APRIL 23 CDC and FDA lift the pause on Johnson & Johnson vaccine.



MAY

- MAY 3 Vaccine appointments are no longer necessary at MAEC—walk-ins are welcome.
- MAY 4 Utah eliminates all COVID public health orders based on the metrics outlined in HB 294 being met.
- MAY 5 **Utah issues public health order requiring masks in schools.**
- MAY 5 Appointments are no longer necessary for drive-thru vaccine at Maverik Center.
- MAY 10 Pfizer vaccine receives emergency use authorization for people ages 12–15.
- MAY 13 Utah lifts the school mask order for the final week of the school year.
- MAY 28 The Maverik Center mass test site closes after operating since June 2020. At its peak in November 2020, it processed 1,200+ tests per day and provided over 30,000 tests in all.
- MAY 29 The Salt Palace mass vaccination site closes. The site saw over 72,000 people receive vaccine doses.



JUNE

- JUNE 1 **Dr. Angela C. Dunn becomes executive director of Salt Lake County Health Department. Dr. Dunn and Gary Edwards will overlap for one month for a smooth transition.**
SLCoHD's five Public Health Centers begin offering COVID vaccine.
- JUNE 26 The Maverik Center drive-thru mass vaccination site closes. The site provided over 147,000 doses total.



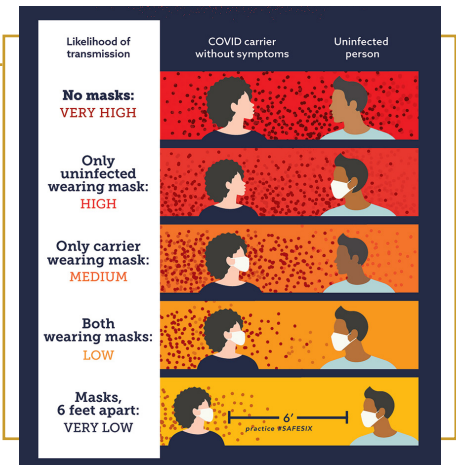
JULY

- JULY 2 Gary Edwards retires from his role as executive director of SLCoHD after 16 years with the department and 40 years in public health.
- JULY 12: The Mountain America Expo Center mass vaccination site closes. The site saw over 194,000 doses given.



AUGUST

- AUGUST 6 **SLCoHD releases "Stop the Spread" COVID transmission infographic showing the likelihood of transmission in various mask scenarios.**
SLCoHD issues a public health order requiring students attending kindergarten through grade 6 at a public, charter, or private school in Salt Lake County to wear a face covering that completely covers the nose and mouth when in any indoor area of the premises, on school-provided transportation, or attending an indoor school-sponsored activity, with some exceptions.
- AUGUST 11 The Salt Lake County Council repeals the previous day's public health order.
- AUGUST 12 The FDA revises the Emergency Use Authorizations for both Pfizer and Moderna to allow a third dose for people who are immunocompromised.
- AUGUST 13 UDOH releases new "Test to Stay" guidance for the school year.
- AUGUST 17 CDC orders all school bus drivers and passengers to wear masks.
- AUGUST 23 The Pfizer vaccine receives full use authorization from the FDA.
- AUGUST 26 SLCoHD begins offering COVID vaccine and resources via door-to-door canvassing in neighborhoods with low vaccination rates and high transmission.



SEPTEMBER

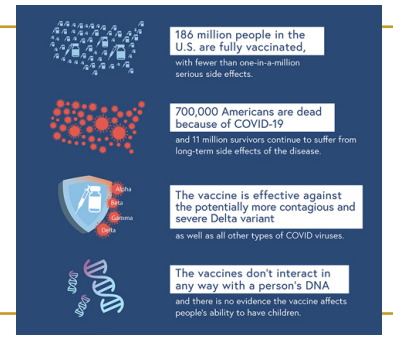
- SEPTEMBER 7 **SLCoHD begins offering free, public COVID testing at Salt Lake Public Health Center, Rose Park Elementary, and Thomas Jefferson Junior High in Kearns.**
- SEPTEMBER 27 Pfizer booster doses begin for eligible people.



OCTOBER

OCTOBER 5

SLCoHD delivers "Get the Facts" vaccine promotion posters and clinician speaking point handouts to medical clinics in areas of high transmission.



OCTOBER 19

SLCoHD goes viral on social media (over 3 million views on Twitter) and receives international media attention for its post analyzing vaccination rates by zodiac sign.

OCTOBER 21

CDC recommends booster doses for Moderna and Janssen, as well as allows mixing and matching vaccine brands.

SIGN	% FULLY VACCINATED
♌ LEO	70%
♈ AQUARIUS	67%
♈ ARIES	59%
♐ SAGITTARIUS	59%
♋ CANCER	58%
♉ TAURUS	56%
♊ GEMINI	55%
♎ LIBRA	54%
♛ PISCES	51%
♑ CAPRICORN	51%
♍ VIRGO	50%
♏ SCORPIO	46%

NOVEMBER

NOVEMBER 2

CDC expands Pfizer eligibility to children 5–11 years old.

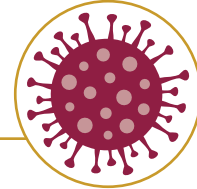
NOVEMBER 19

FDA authorizes and CDC encourages single-dose boosters of Pfizer and Moderna vaccines, at least 6 months after receiving the primary vaccinations, and of the Johnson and Johnson vaccine, at least 2 months after the primary vaccination, for all eligible adults 18 years and older.

SLCoHD releases booster shot comparison graphic showing the importance of boosters for extended protection.

NOVEMBER 26

WHO classifies and names the Omicron variant.



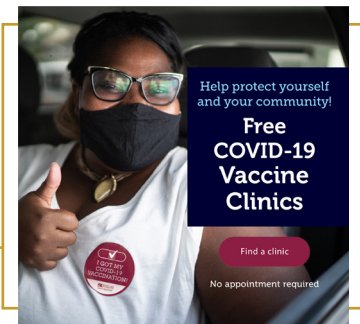
DECEMBER

DECEMBER 3

Utah identifies first case of Omicron.

DECEMBER 6

SLCoHD continues offering COVID vaccine clinics at community locations throughout the county.



DECEMBER 9

FDA authorizes Pfizer boosters for people 16–17 years old.

SLCoHD releases vaccine and booster eligibility graphic to help the public understand which vaccines and boosters are approved for whom.

SLCoHD begins offering weekend COVID vaccine clinics at two sites in the county.

DECEMBER 22

SLCoHD releases "What's My Risk? This Holiday Season" infographic.



What's My Risk? This Holiday Season

This guidance is for generally healthy people under 65 years old. If you are 65 or older or have an underlying health condition, raise the level of risk by one color for each situation.

	Small, private indoor gathering	Large, public indoor event	Outdoor gathering
Unvaccinated	🔴	🔴	🔴
If masks are required	🔴	🔴	N/A
Vaccinated > 6 months* ago, no booster	🟡	🔴	🟢

DECEMBER 28

CDC shortens isolation for people with COVID-19 from 10 days to 5 days, if asymptomatic, followed by 5 days of wearing a mask when around others.

COVID-19 Vaccination

Total Vaccines Administered

Salt Lake County
(regardless of provider) **1,789,169**

First Dose 809,157

Second Dose 687,025

Booster 292,987
Booster not widely available until late 2021

Salt Lake County Health Department **545,630**

First Dose 268,500

Second Dose 235,097

Booster 42,033
starting late 2021

OUTREACH CLINICS



91,435
doses given



at 2,990
outreach
clinics



at 449
community
locations

First Dose 49,094

Second Dose 26,488

Booster 15,853



Community Health Workers

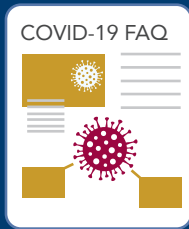


15 CBOs contracted
and granted



11,016
masks distributed

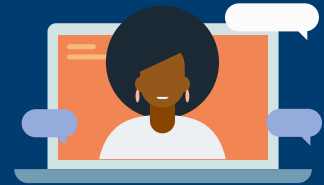
EDUCATION



100 educational
presentations given



11 Spanish radio
station interviews



7 virtual presentations
with Elementary Schools



CHW FOOD DISTRIBUTION

3,451 boxes of food were delivered
to 1,024 households

Overall, 3,948 people benefitted from
the CHW Food Distribution Program

COVID-19 Tests

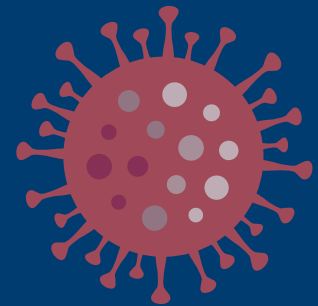
Salt Lake County (regardless of provider)	2,064,878	Salt Lake County Health Department	46,667
Antigen	791,892	Antigen	33,386
PCR	1,272,986	PCR	13,281

COVID-19 confirmed cases

Confirmed cases 10,107 cases per 100,000	121,976
School cases 2021–2022 school year	23,627
Homeless Resource Centers	257*
Cases in individuals experiencing homelessness	222*

COVID-19 confirmed outbreaks

Worksite	785
Long term care	147
Congregate settings	57



HOSPITALIZATIONS

4,896

406 deaths per
100,000 population

DEATHS CAUSED BY COVID

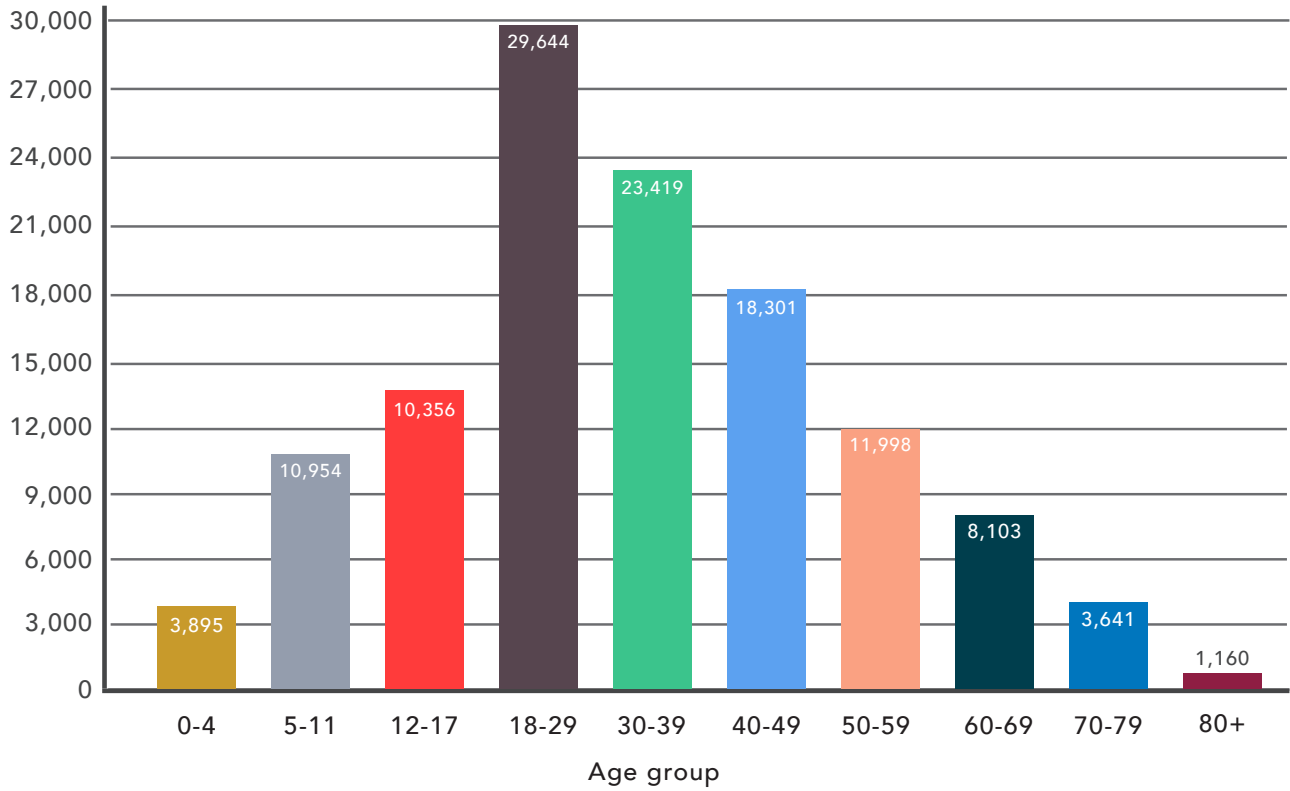
716

59 deaths per
100,000 population

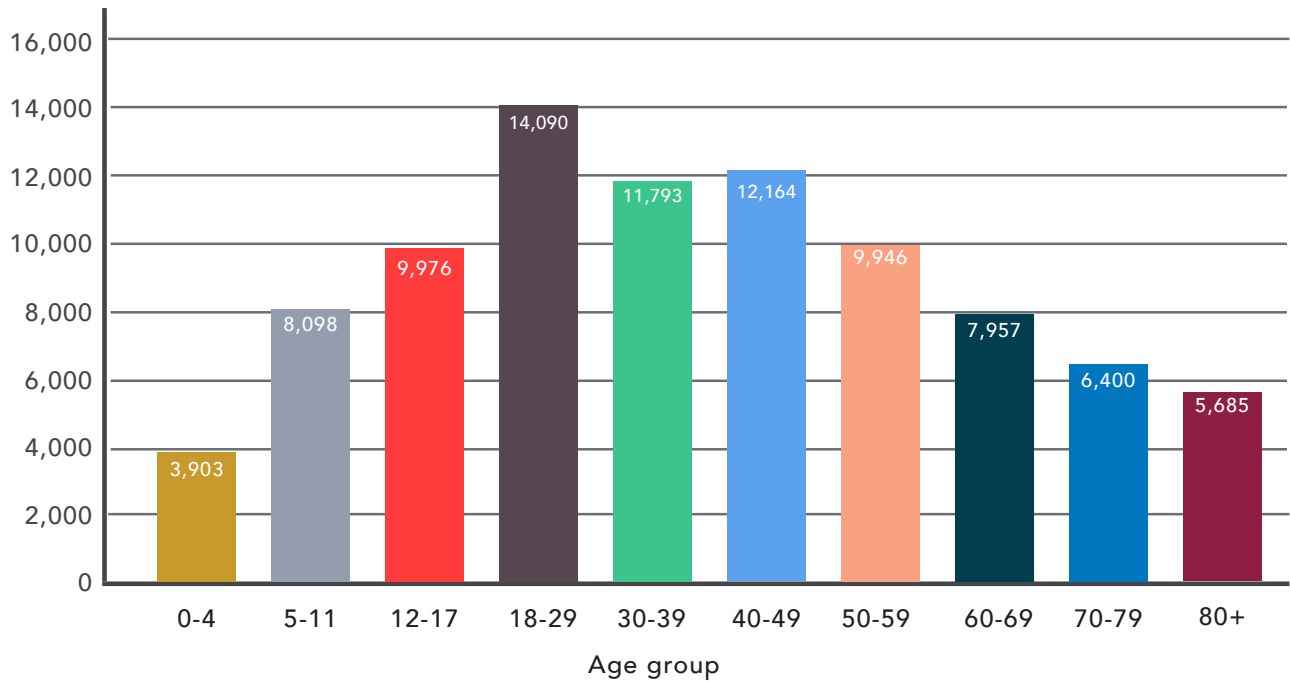
*Note: Numbers related to homeless resource centers and people experiencing homelessness are an estimate and, due to surveillance limitations, there are many cases of COVID-19 in these populations that go unreported.

COVID-19 Cases by Age

Total Cases

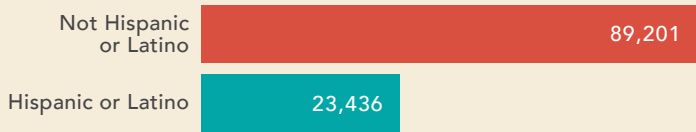


Case Rate per 1,000 people



COVID-19 Cases by Ethnicity

Cases

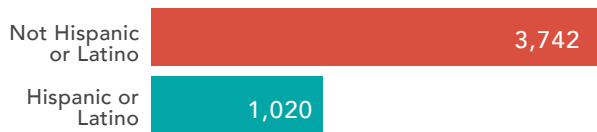


Case Rate per 100,000 Population



The COVID-19 case rate can be helpful in assessing to what extent the virus has impacted a community. It also is useful when comparing COVID-19's spread in different communities of different sizes.

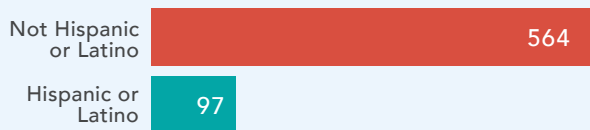
Hospitalizations



Hospitalization Rate per 1,000 Cases



Deaths

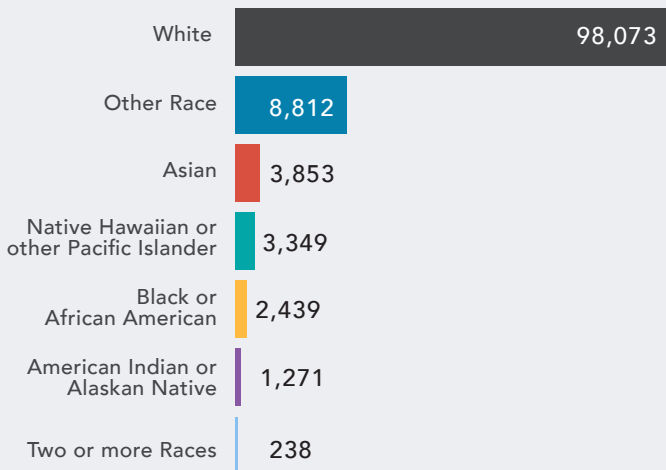


Case Fatality Rate per 1,000 cases

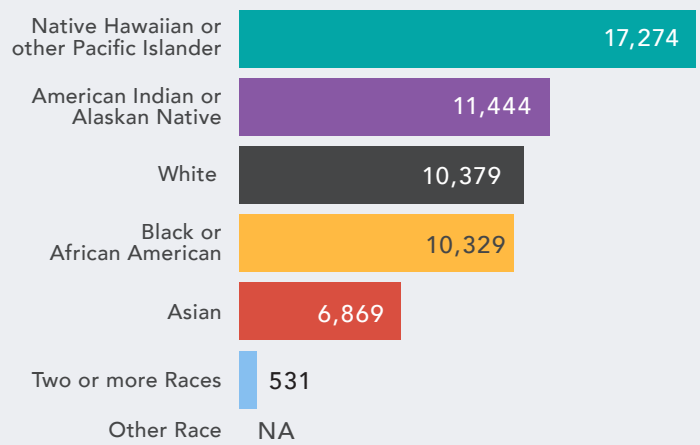


COVID-19 Cases by Race

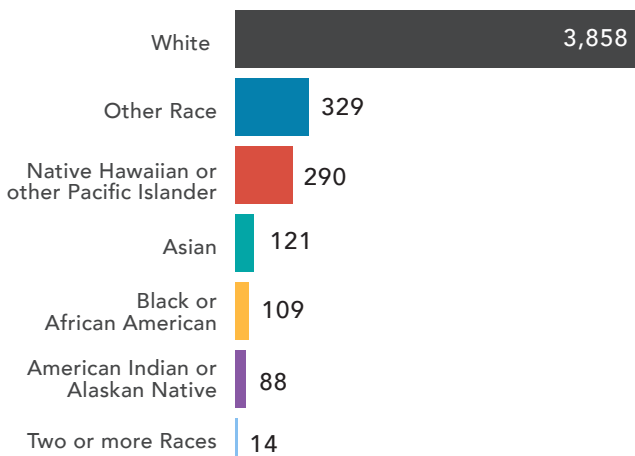
Cases



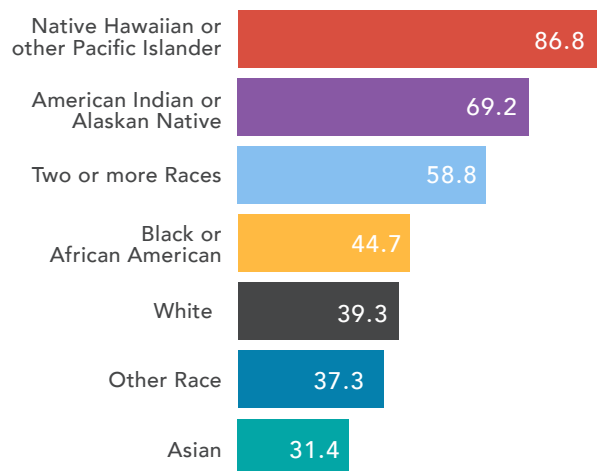
Case Rate per 100,000 Population



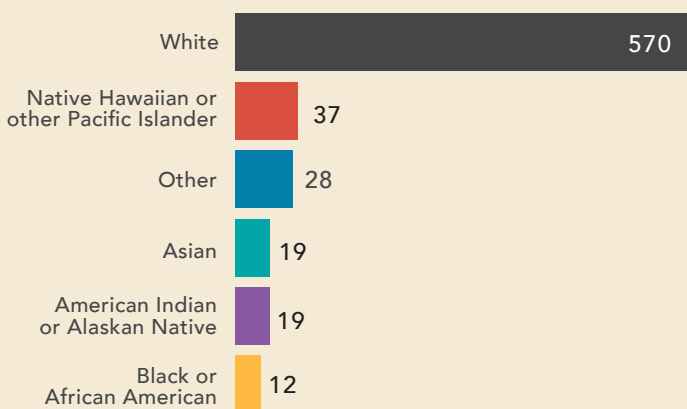
Hospitalizations



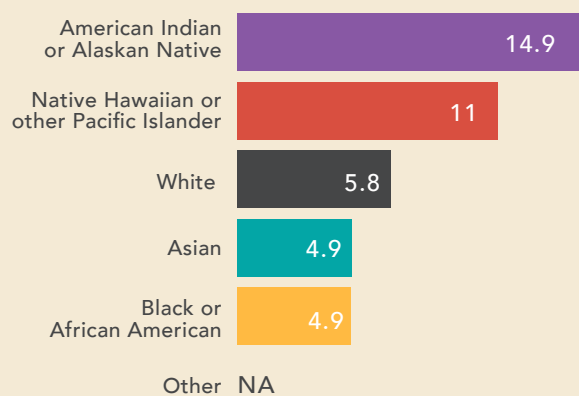
Hospitalization Rate per 1,000 Cases



Deaths

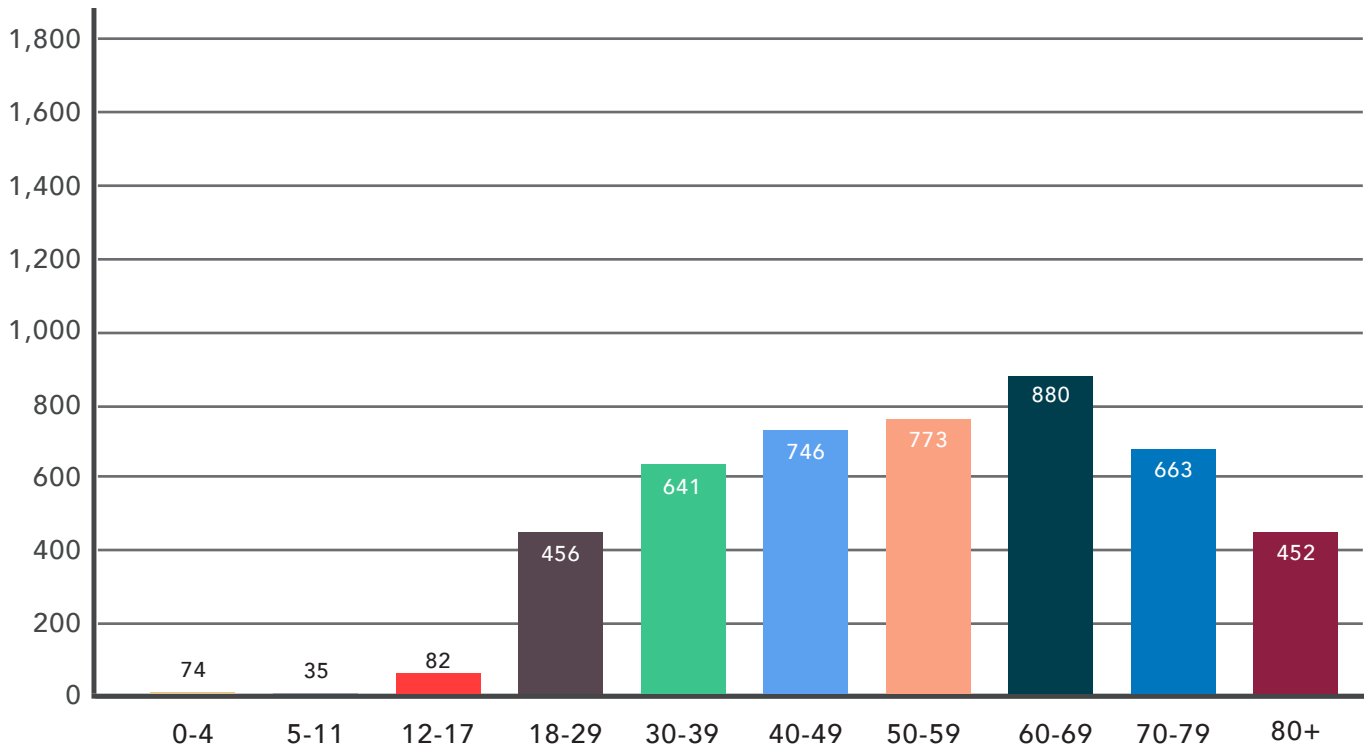


Case Fatality Rate per 1,000 cases

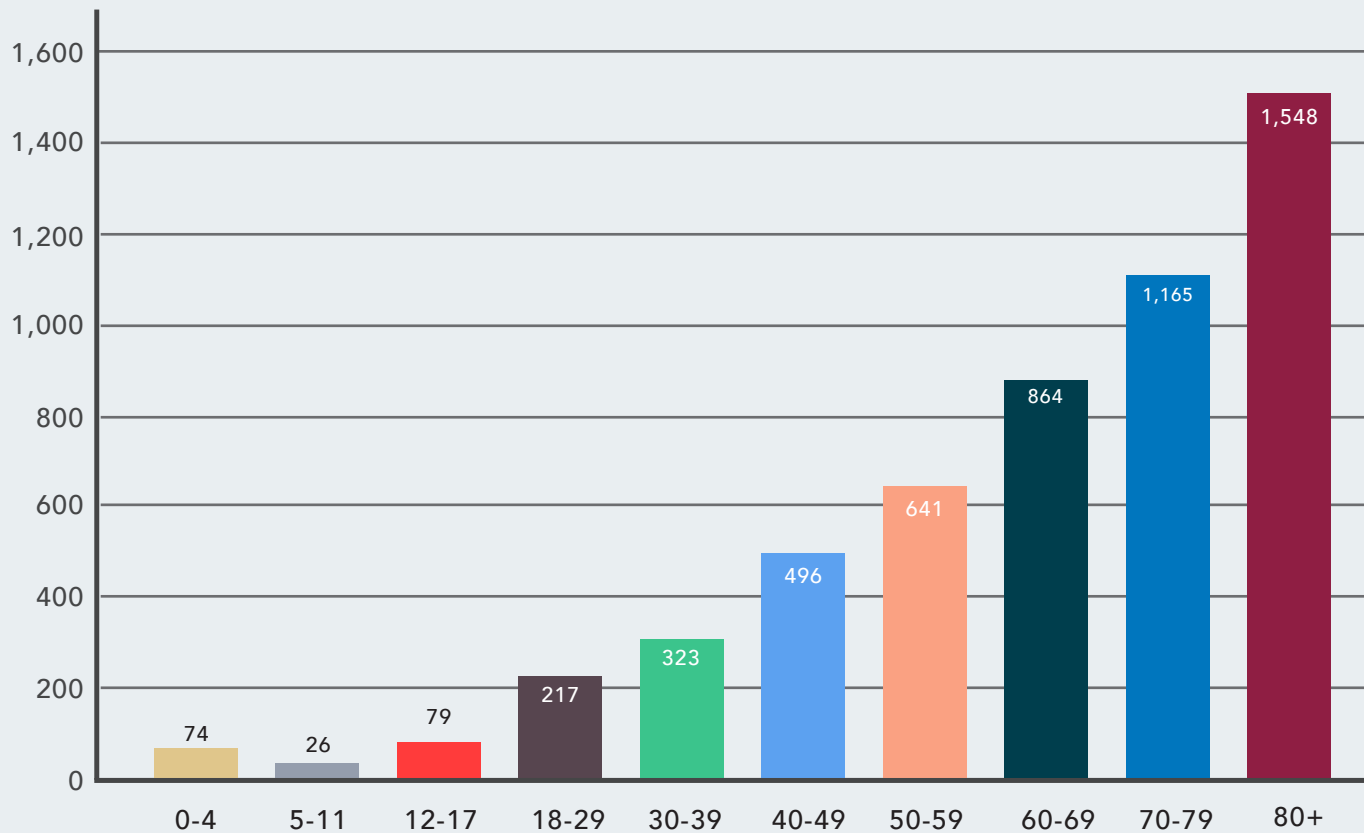


COVID-19 Hospitalizations by Age

Total Hospitalizations: 4,802

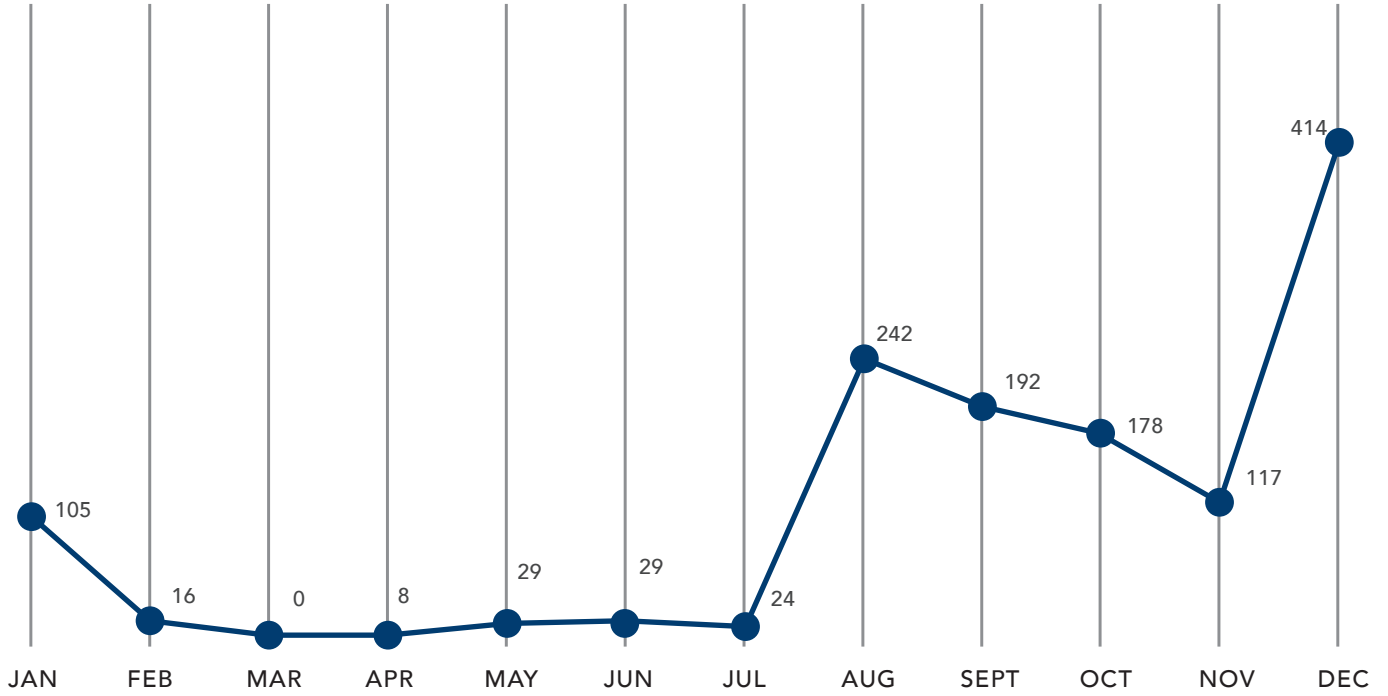


Hospitalization Rate per 1,000: 5,433

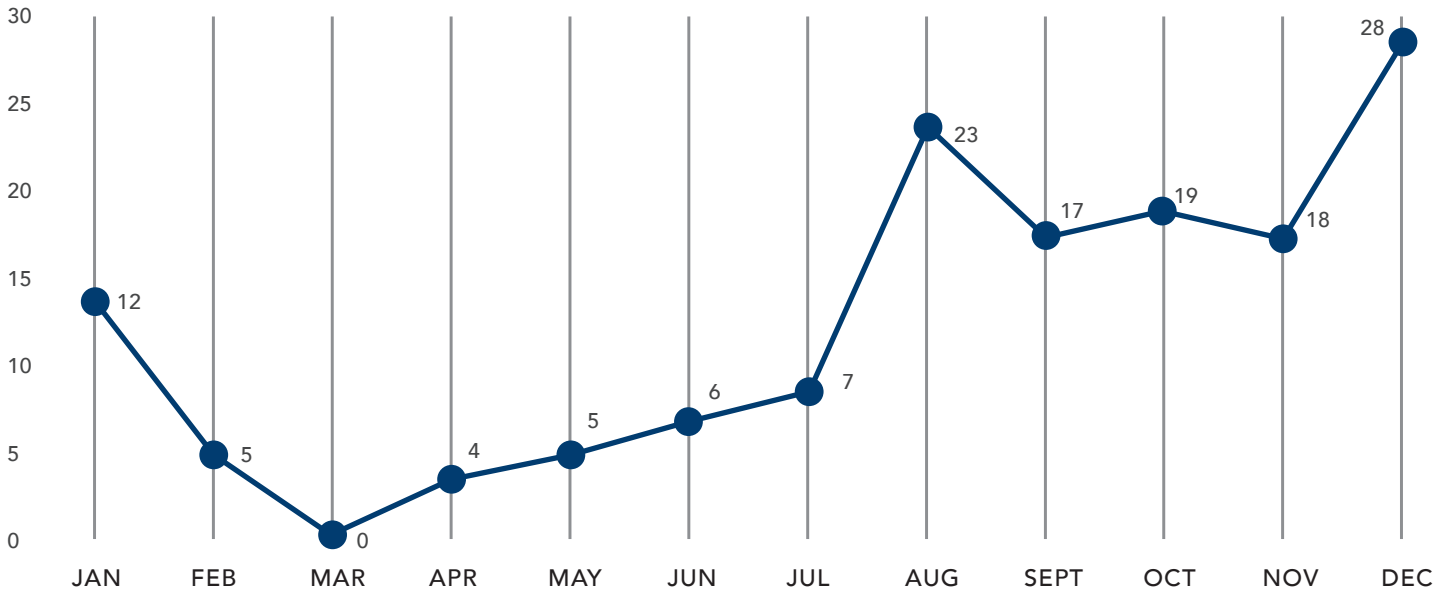


COVID-19 Long-term Care Facilities

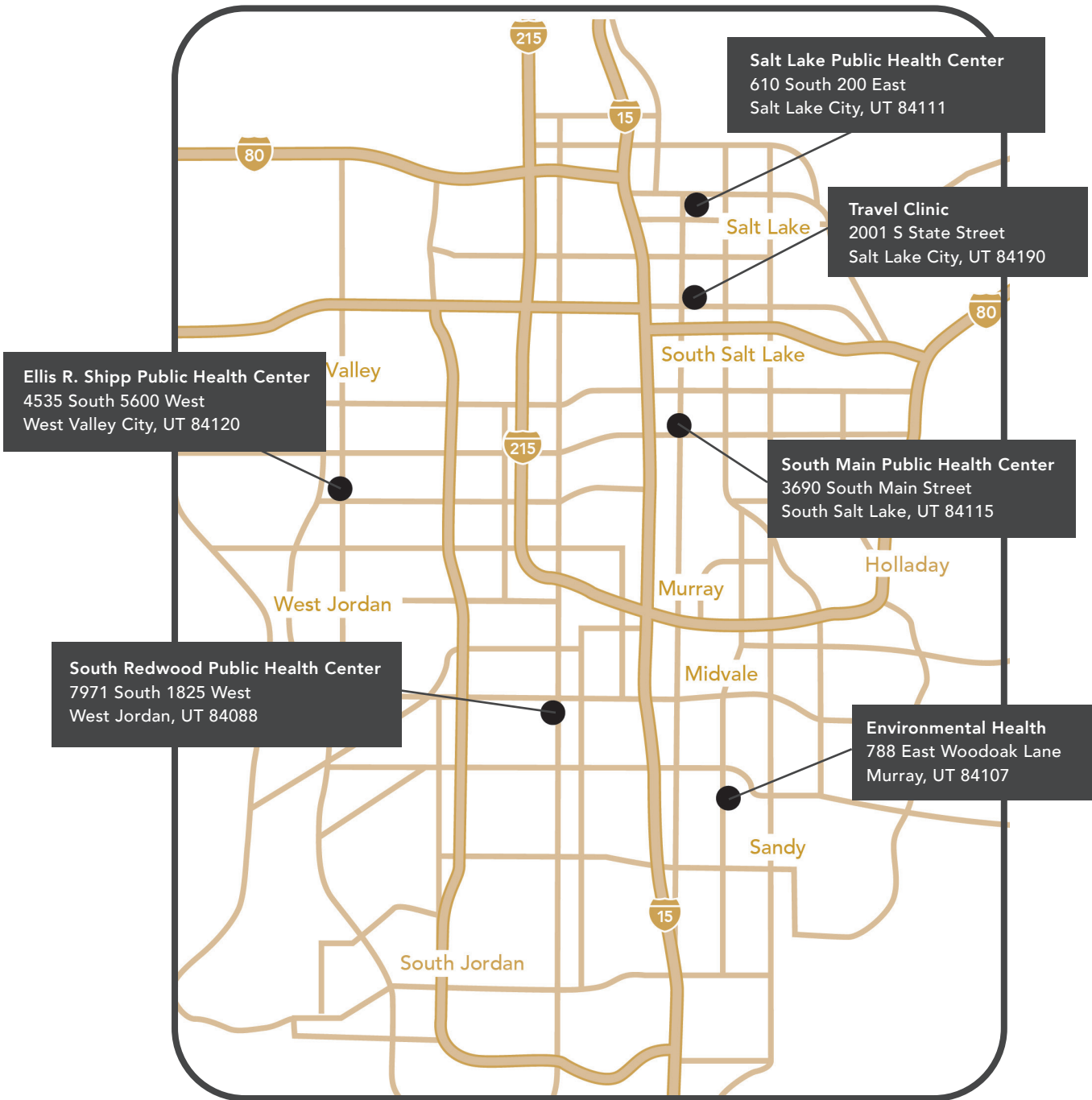
Total Cases



Outbreaks



Salt Lake County Health Department Facilities





Salt Lake County Health Department promotes and protects community and environmental health.

www.SaltLakeHealth.org