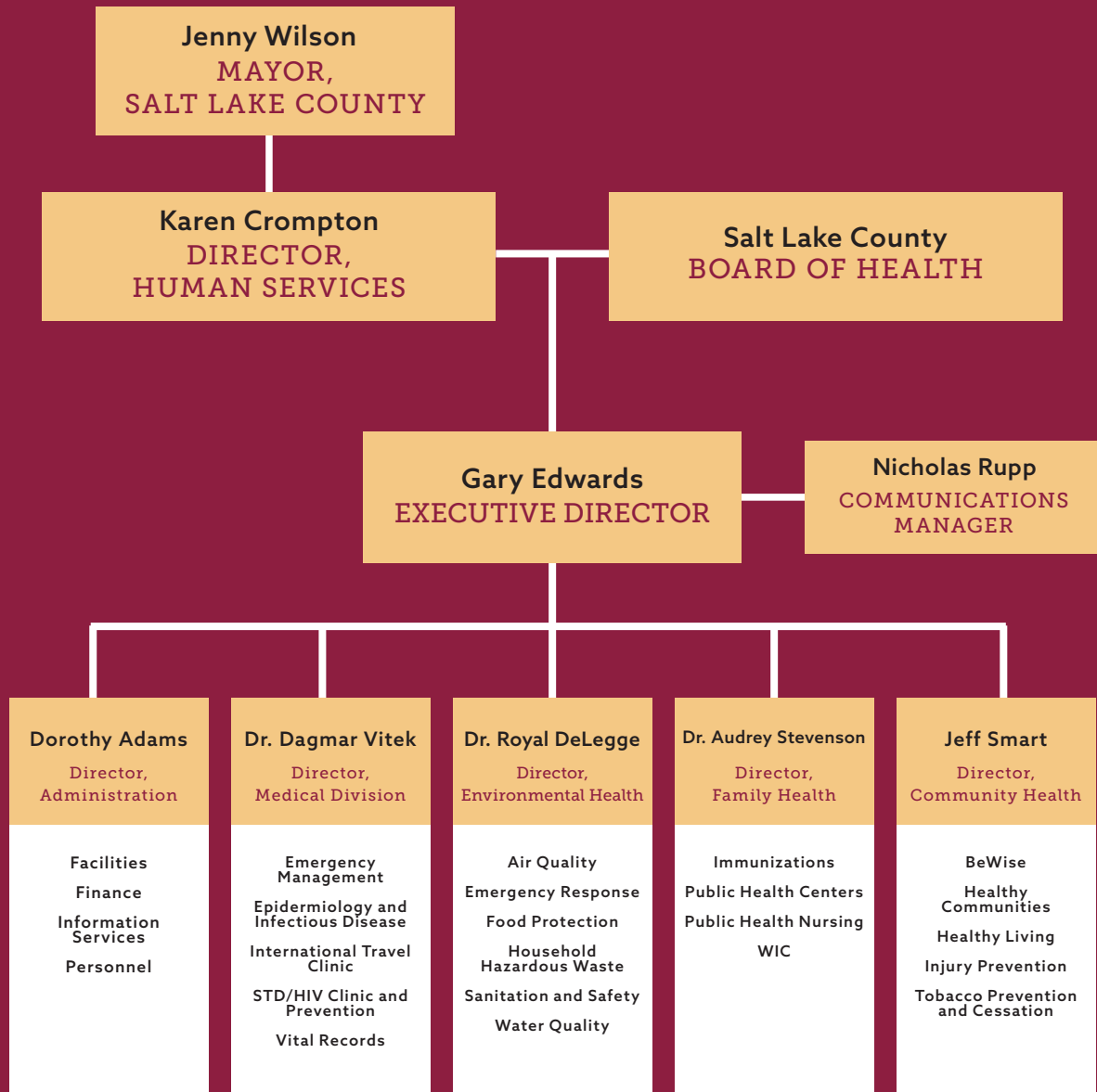


# 2020 ANNUAL REPORT



# Organization

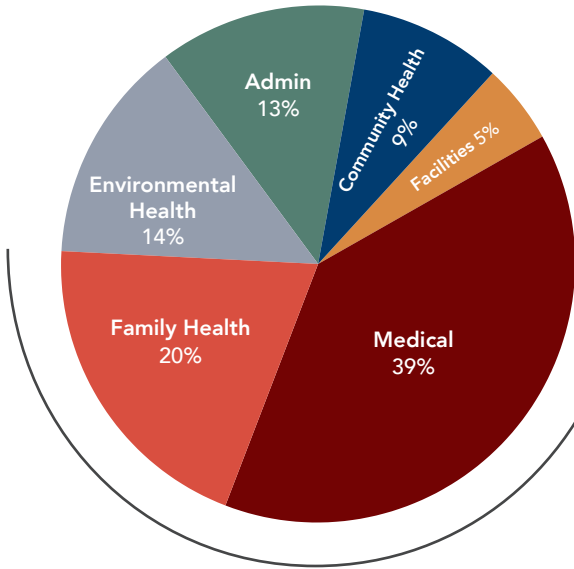


## BOARD OF HEALTH

Russ Booth, Chair  
 Arlyn Bradshaw  
 Scott Brown  
 Michele Corigliano  
 Dr. William Cosgrove  
 Rylee Curtis  
 Robert Dahle  
 Kalina Duncan, 2nd Vice Chair

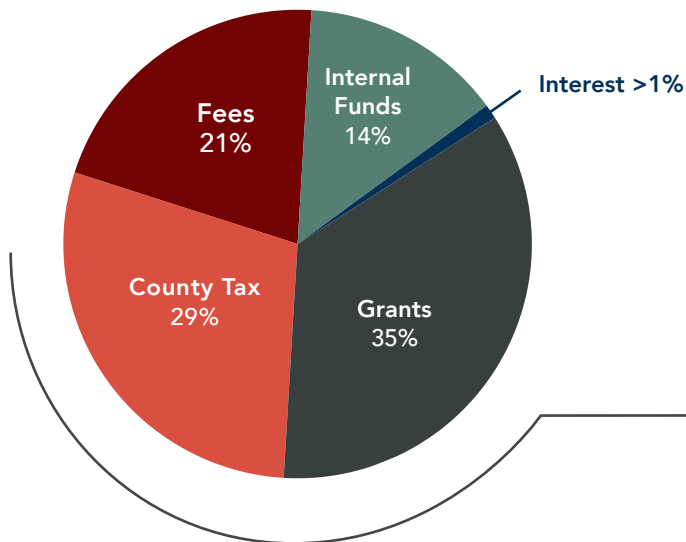
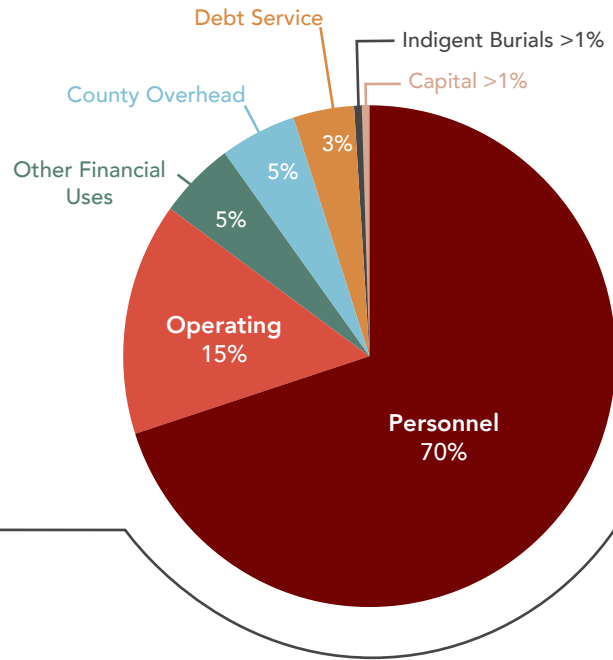
Roderic Land  
 Lavanya Mahate  
 Leticia Medina  
 Mollie Nordgren  
 Mimi Shen  
 Dr. Ruedi Tillmann  
 Dr. Dorothea Verbrugge, 1st Vice Chair

# Finances



Admin	\$6,520,879
Facilities	\$2,453,986
Community Health	\$4,933,417
Environmental Health	\$7,502,038
Family Health	\$10,372,280
Medical	\$20,372,371
<b>Total</b>	<b>\$52,154,971</b>

Personnel	\$36,919,886
Operating	\$8,071,724
County Overhead	\$2,568,602
Debt Service	\$1,413,173
Indigent Burials	\$129,050
Capital	\$193,318
Other Financing Uses	\$2,859,218
<b>Total</b>	<b>\$52,154,971</b>



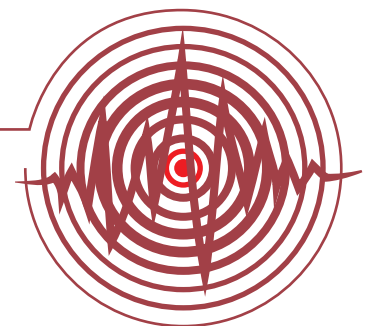
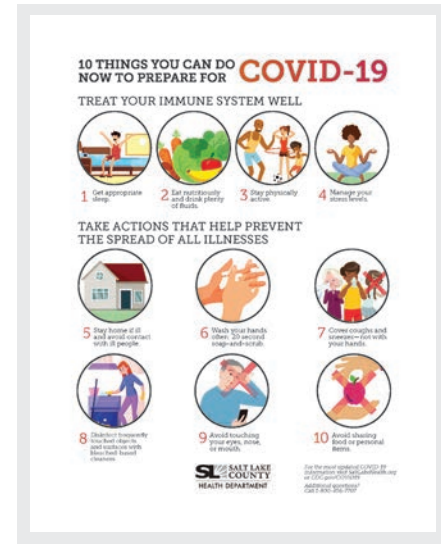
County Tax	\$17,465,099
Grants	\$21,277,406
Fees	\$12,611,213
Interest	\$180,988
Internal Funds	\$8,500,929
<b>Total</b>	<b>\$60,035,635</b>

## FEBRUARY

- FEBRUARY 24 After receiving several emails from alarmed residents, SLCoHD issues a statement that an Asian dance troupe based in NYC that is performing in coming weeks in SLC does not pose a risk of COVID-19 to locals.
- FEBRUARY 28 SLCoHD publishes "10 Things You Can Do Now to Prepare for COVID-19".

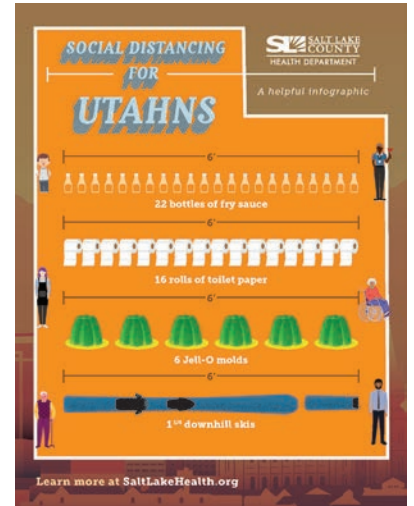
## MARCH

- MARCH 4 Statement that it is not necessary to hoard water or toilet paper.
- MARCH 7 Mayor Wilson issues state of emergency proclamation as a preparedness measure.
- MARCH 12 First SLCo case. SLCoHD advises the county's five school districts to postpone or cancel school-sponsored out-of-state travel through at least mid-April.
- MARCH 13 Four SLCo cases. Salt Lake County closes all facilities except Salt Palace, Mountain America Expo Center, and SLCoHD Public Health Centers; this includes libraries, senior centers, recreation centers, theatres/cultural facilities, Clark Planetarium, and Discovery Gateway.
- MARCH 14 First community spread in Utah (Summit County). SLCoHD announced 9 additional COVID cases in the county (bringing total to 14, including 3 children), including the county's first school exposures.
- MARCH 15 SLCo closes Salt Palace and Mountain America Expo Center. Dr. Vitek holds media availability to discuss what the community can do in response to COVID-19.
- MARCH 16 Public Health Order 2020-01
- MARCH 17 SLCoHD begins operating quarantine and isolation facilities for people who do not have a place to stay after exposure or a positive test.
- MARCH 18 5.7 earthquake.
- MARCH 19 Public Health Order 2020-02
- MARCH 22 First Utah death (Davis County).
- MARCH 23 Hundreds of people gathered in a large crowd at the Salt Lake City International Airport to welcome 1,600 returning missionaries, prompting criticism from the state government.  
  
Testing becomes available to anyone with symptoms (previously only for those with travel or confirmed exposures).
- MARCH 24 All elective surgeries postponed.
- MARCH 29 Public Health Order 2020-03



## APRIL

- APRIL 3 "Social Distancing for Utahns" graphic.
- APRIL 4 First long-term care facility death in the state occurs in SLCo.
- APRIL 10 Public Health Order 2020-04
- APRIL 12 ARUP Laboratories begin antibody testing.
- APRIL 17 Public Health Order 2020-05
- APRIL 30 Public Health Order 2020-06



## MAY

- MAY 27 The number of cases in the Hispanic community surpasses that of the supermajority white population.

## JUNE

- JUNE 26 Public Health Order 2020-11
- JUNE 29 "How Not to Wear a Face Covering" campaign.



## JULY

- JULY 13 "Practice #SafeSix" graphic.

## AUGUST

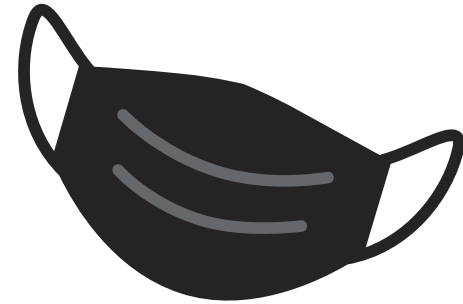
- AUGUST 28 In response to a GRAMA request, SLCoHD releases worksite outbreak data showing that the workplaces with the most cases were in manufacturing, retail, construction, transportation, and food and beverage service.



## SEPTEMBER

SEPTEMBER 8

After 10 days of in-person schooling in three of the county's five school districts (and 15 days of in-person schooling in Murray)—the department has identified 150 COVID cases and 34 outbreaks associated with K–12 schools. In addition, more than 1,700 people have been exposed to COVID in a school setting due to the 150 cases. SLCoHD issues a news release urging parents to keep sick or exposed children home from school.



SEPTEMBER 24

Public Health Order 2020-14

## OCTOBER

OCTOBER 16

University of Utah Hospital ICU reaches "more than 100% capacity."

OCTOBER 26

Public Health Order 2020-15

## NOVEMBER

NOVEMBER 8

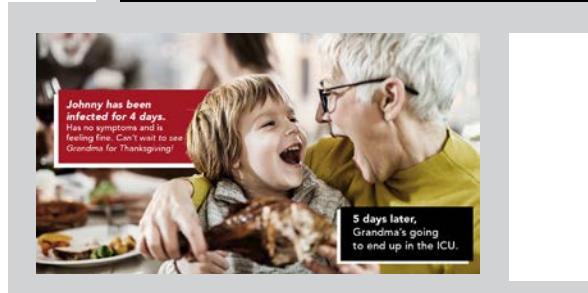
Governor Herbert issues statewide mask mandate.

NOVEMBER 9

"Real Stories" COVID media campaign highlights the personal impacts of COVID-19 by sharing the real experiences of Utahns, including survivors experiencing long-term side effects, healthcare workers, and people with other urgent health care needs impacted by hospital constraints.

NOVEMBER 23

National attention for holiday social media campaign encouraging families to not gather and risk the lives of loved ones.



## DECEMBER

DECEMBER 8

SLCoHD recognizes more than 100 frontline volunteers for over 15,000 cumulative hours of community service as part of the pandemic response.

DECEMBER 15

Over 90 healthcare workers receive the first vaccine doses in the state.

DECEMBER 24

SLCoHD first vaccinates its employees.



## 108,240 COVID-19 CASES

8,969 cases per 100,000 population

---

## 4,352 HOSPITALIZATIONS

4,201 cases per 100,000

---

## 675 DEATHS

56 deaths per 100,000 population





**7,270** SCHOOL CASES  
4,547 cases per 100,000

---



**1,947** WORKSITE OUTBREAKS

---

**134** LONG TERM CARE OUTBREAKS

---

**825** CASES IN INDIVIDUALS  
EXPERIENCING HOMELESSNESS

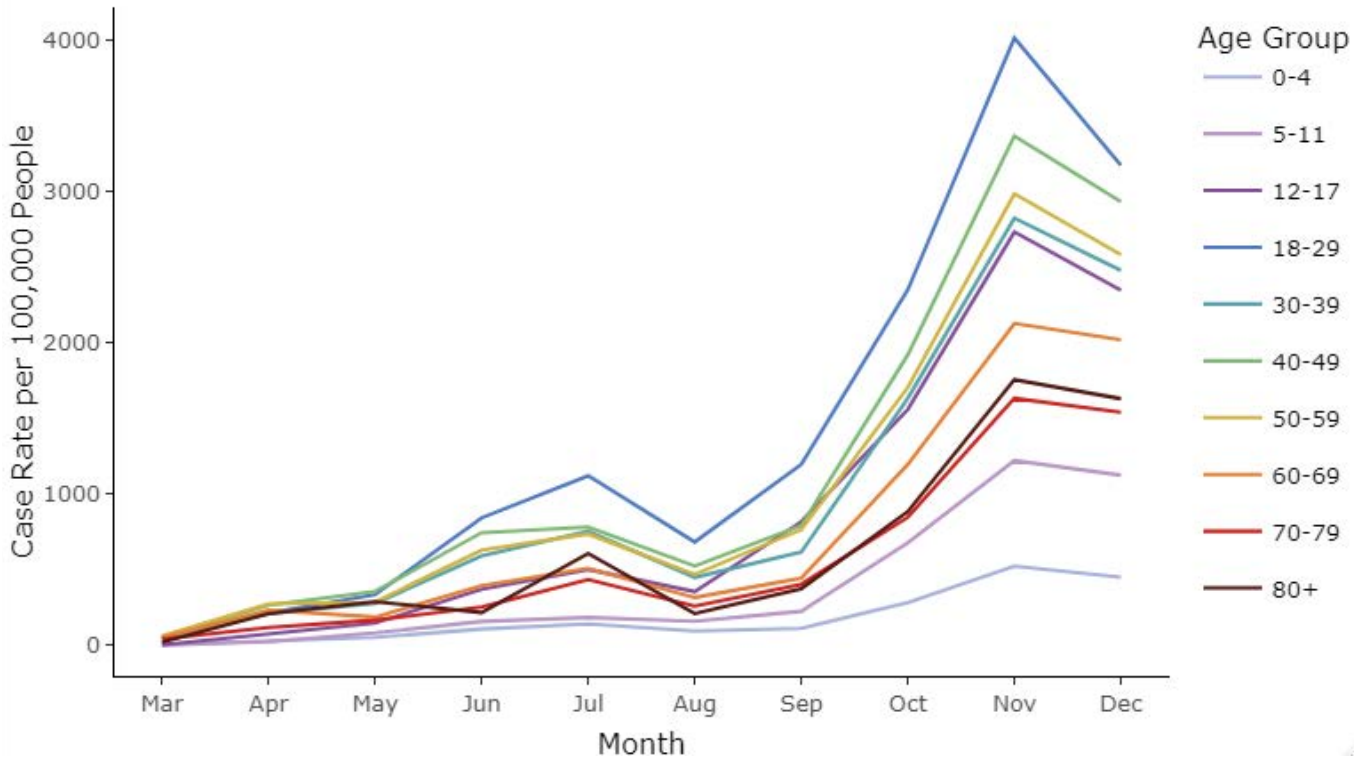
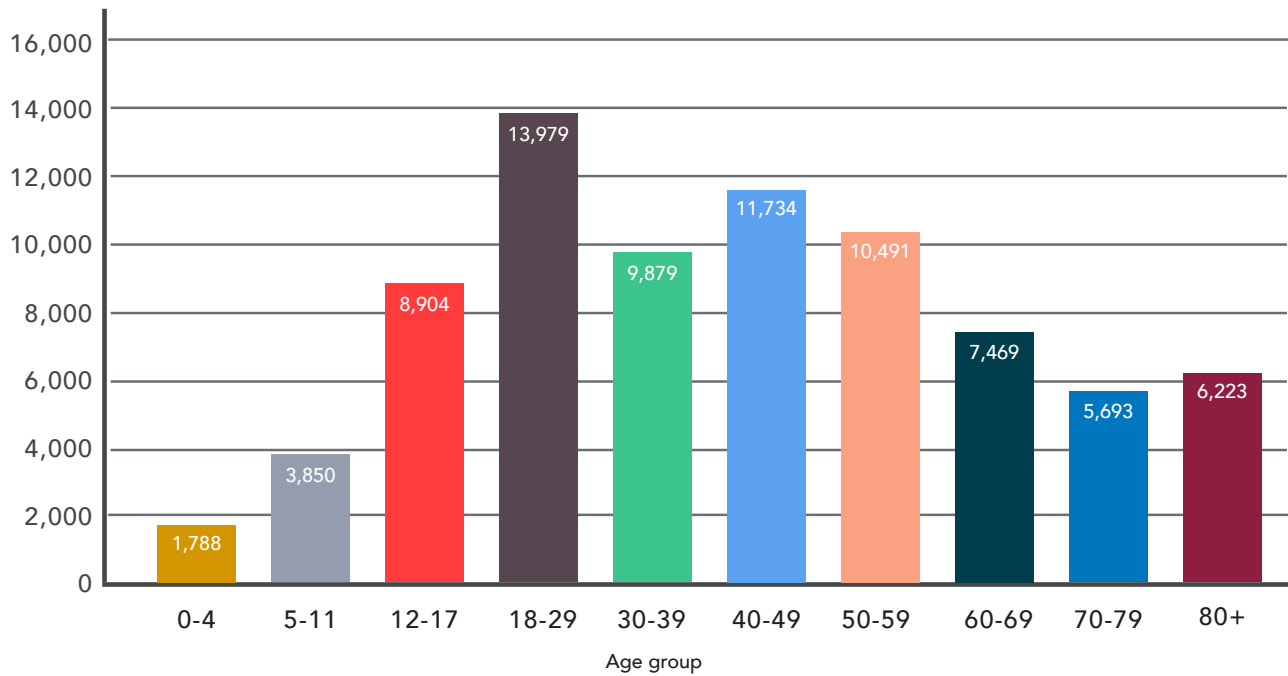
**702** HOMELESS RESOURCE CENTER CASES

**699** CASES IN CONGREGATE SETTINGS  
66 Outbreaks



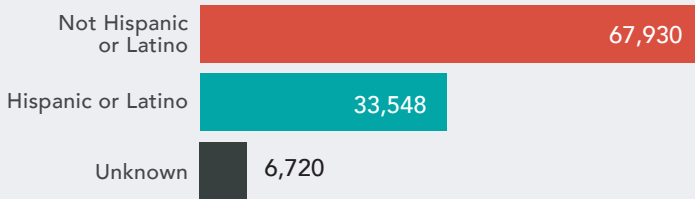
# COVID-19 Cases by Age

Case Rate per 1,000 people

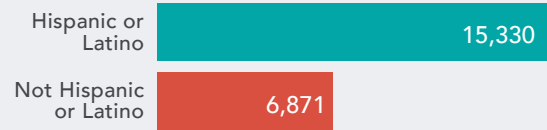


# COVID-19 Cases by Ethnicity

## Cases

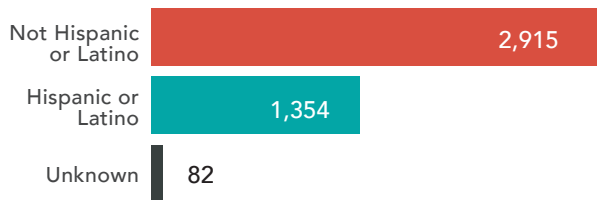


## Case Rate per 100,000 Population

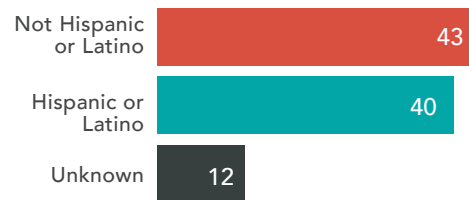


The COVID-19 case rate can be helpful in assessing to what extent the virus has impacted a community. It also is useful when comparing COVID-19's spread in different communities of different sizes.

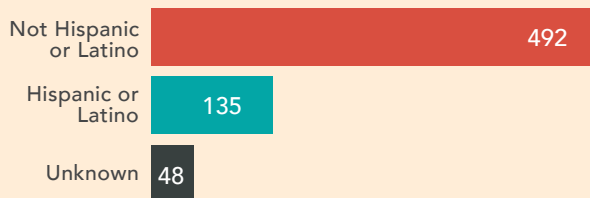
## Hospitalizations



## Hospitalization Rate per 1,000 Cases



## Deaths

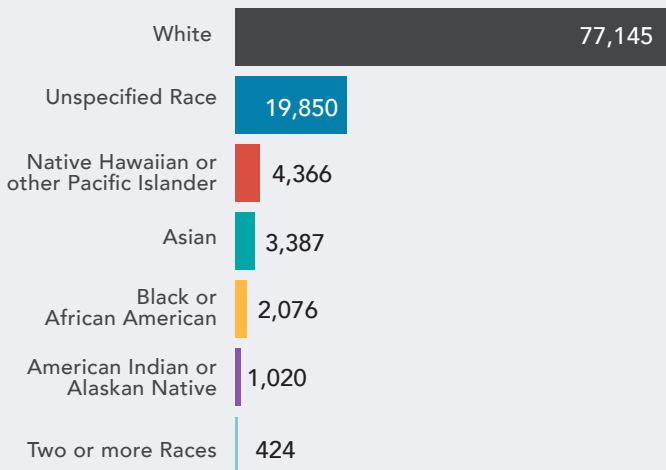


## Case Fatality Rate per 1,000 cases

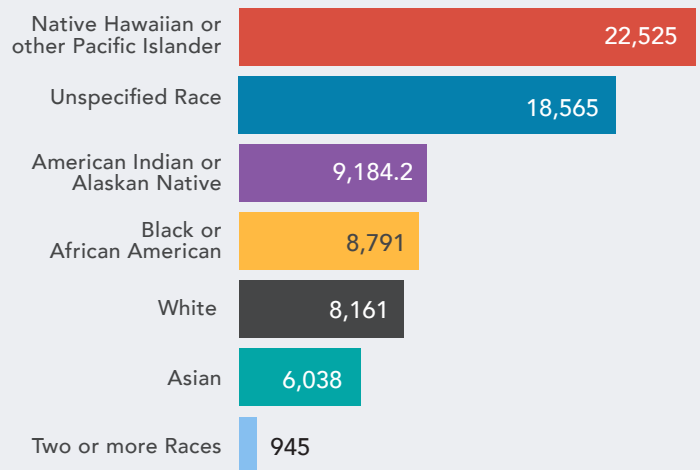


# COVID-19 Cases by Race

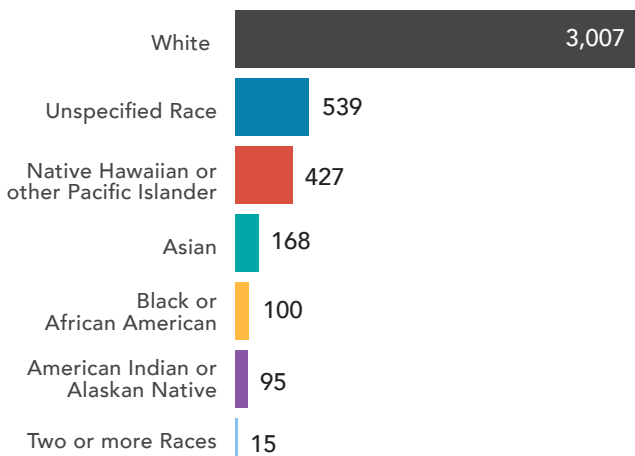
Cases



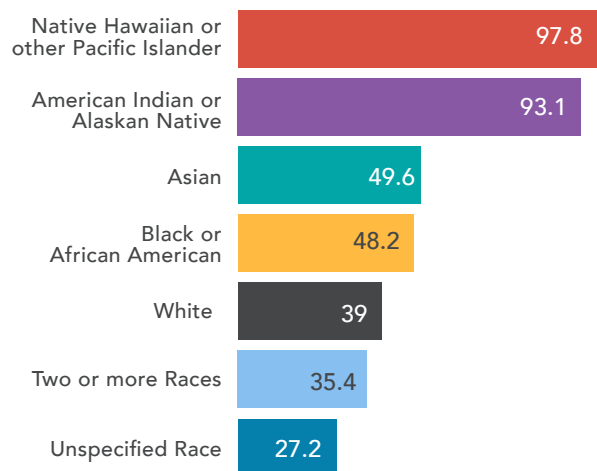
Case Rate per 100,000 Population



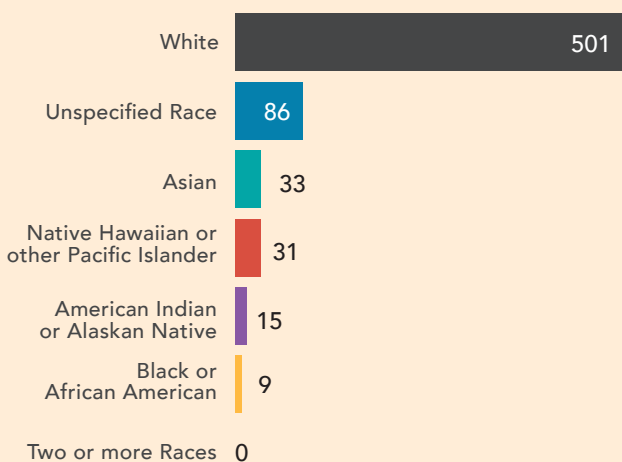
Hospitalizations



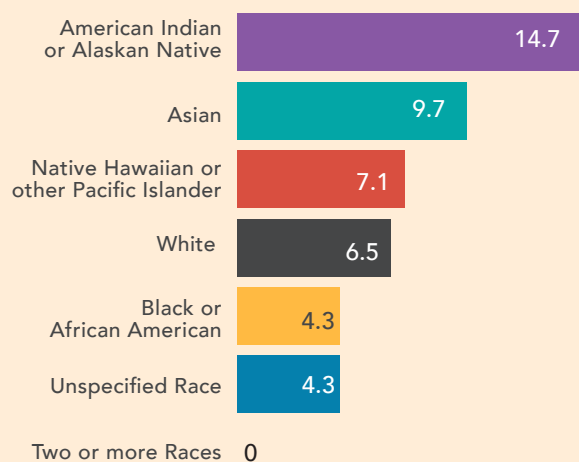
Hospitalization Rate per 1,000 Cases



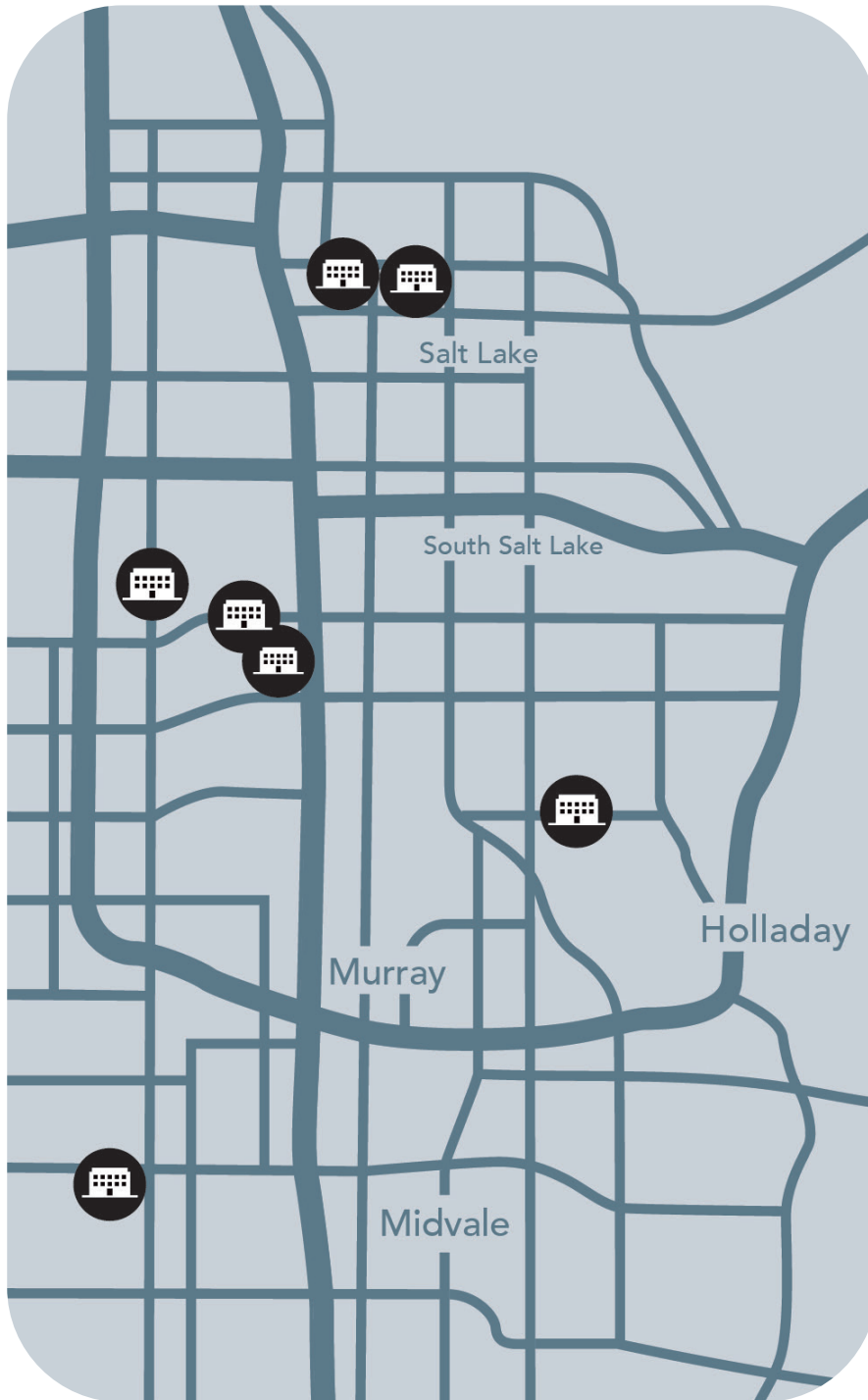
Deaths



Case Fatality Rate per 1,000 cases



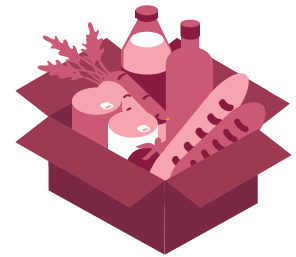
# Quarantine & Isolation Sites



 **LOCATIONS**



**1,800 Guests**  
average per site



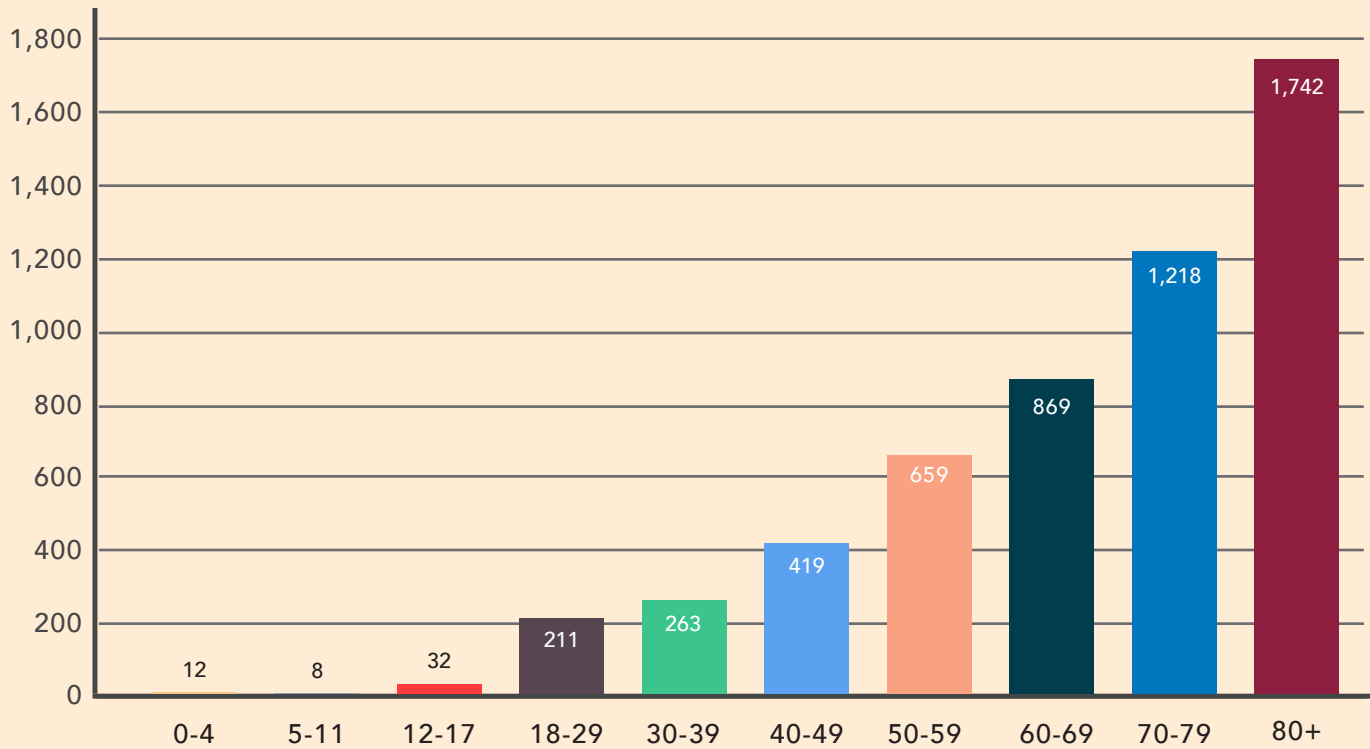
Guests received 3 meals  
per day totaling  
**37,800 meals**  
distributed total



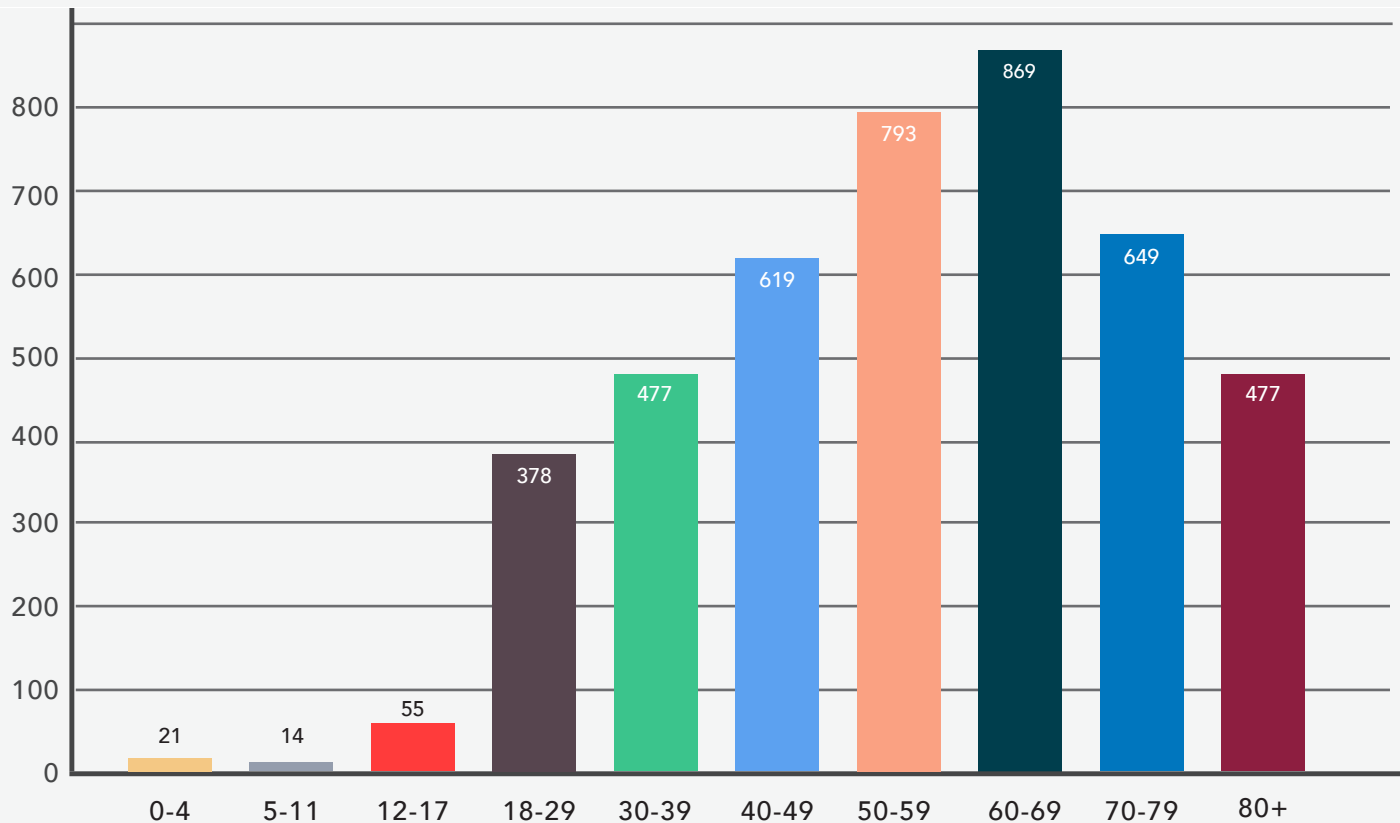
**Each day**, guests were  
provided with hygiene  
products, clothing, and  
basic health checks

# COVID-19 Hospitalizations by Age

Total Hospitalizations: 4,352



Hospitalization Rate per 1,000: 5,433





# 36,356 COVID-19 tests

administered by SLCoHD



Salt Lake County Public Health Center

**3,199 antigen**

**4,534 PCR**



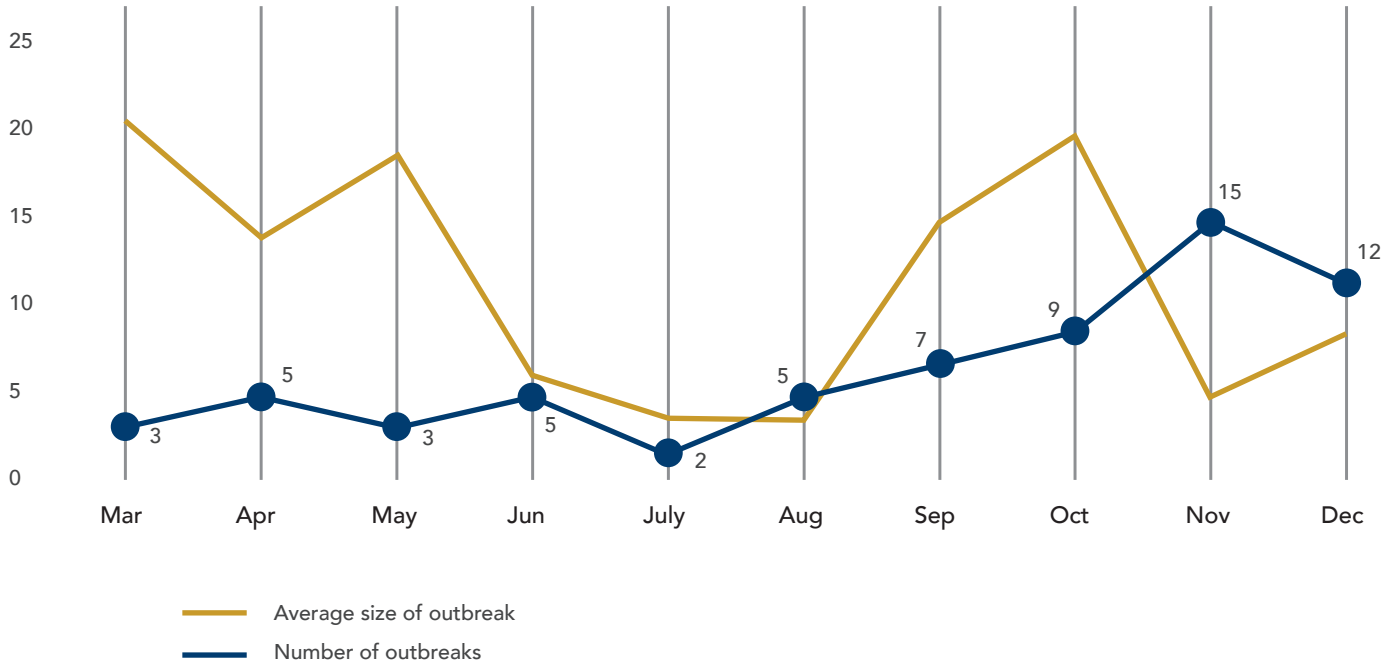
Salt Lake County Mobile Test Unit

**1,183 antigen**

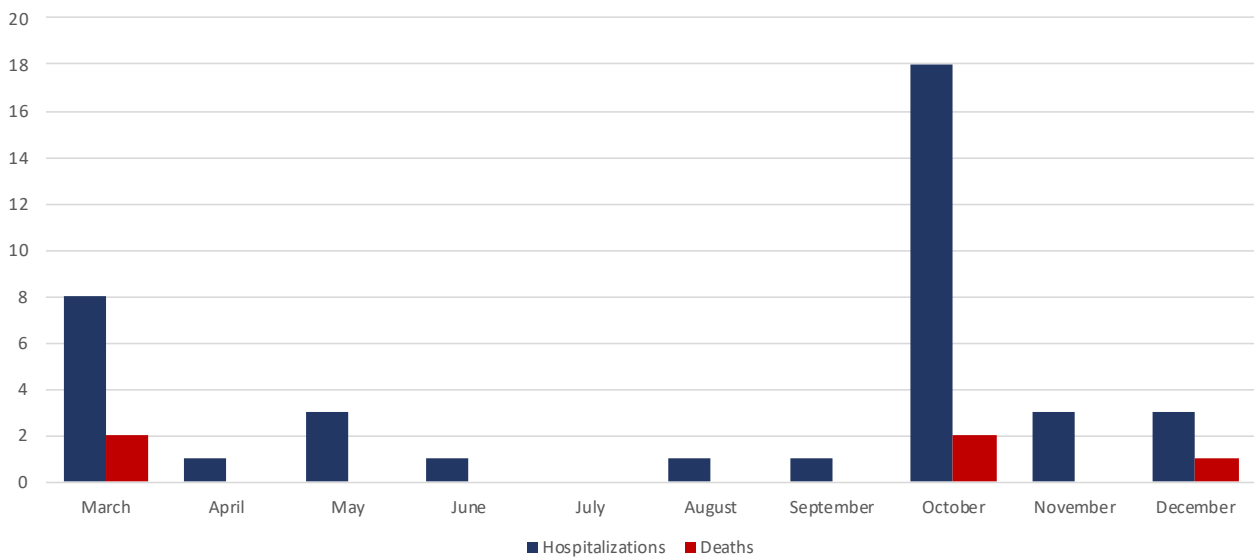
**27,440 PCR**

# COVID-19 Outbreaks

## Congregate Settings Total Outbreaks: 66



## Congregate Settings Total Hospitalizations: 39 Total Deaths: 5



## COVID-19 Outbreaks

# 9,957 Workers

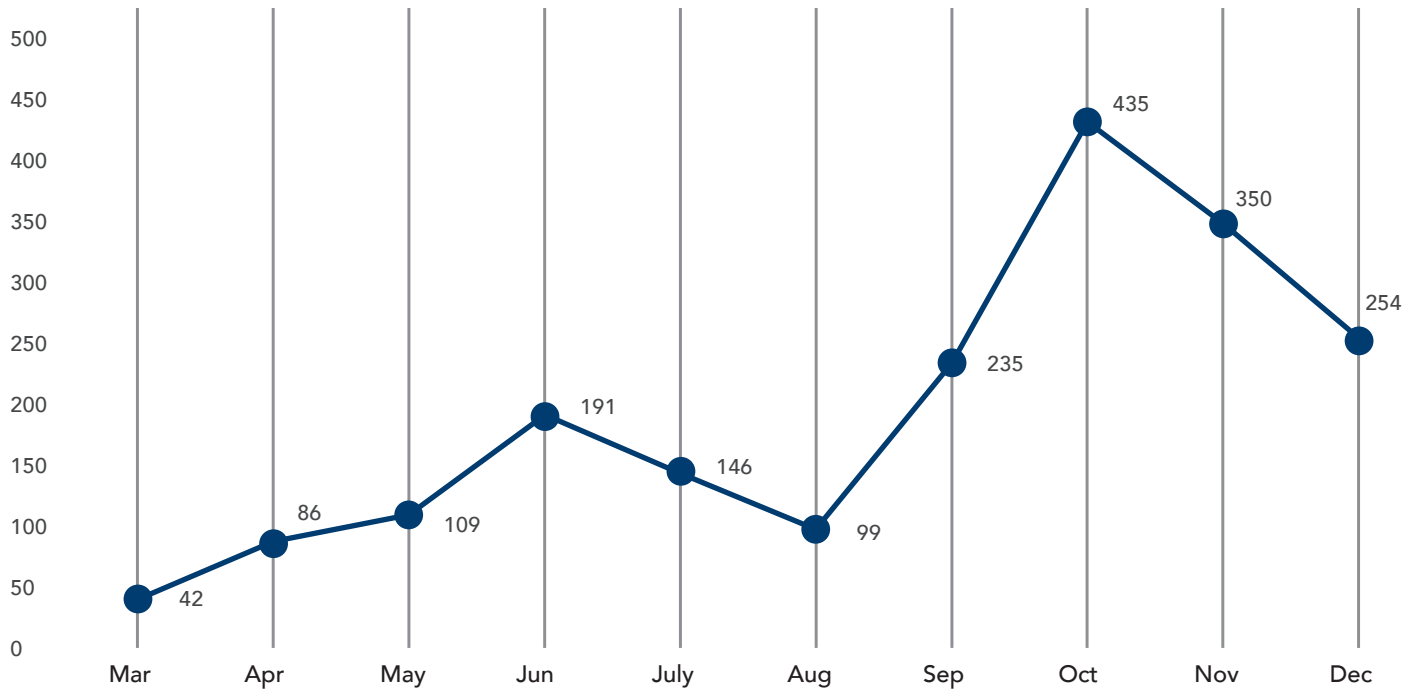
infected through industry outbreaks

Top Industry Outbreaks	Cases	Outbreaks	Hospitalizations	Total Workers
Administrative, Support, Waste Management and Remediation Services	297	61	9	50,781
All other manufacturing	2,562	296	87	49,491
Construction	877	207	25	40,877
Finance and Insurance	281	71	4	48,065
Food Manufacturing	792	77	29	5,645
Food Services and Drinking Places	899	272	25	45,446
Health Care and Social Assistance	366	82	15	66,939
Retail Trade	2,016	352	57	63,604
Transportation and Warehousing	1,628	91	40	34,626
Wholesale Trade	239	55	11	34,943
<b>Totals</b>	<b>9,957</b>	<b>1,564</b>	<b>302</b>	<b>440,417</b>

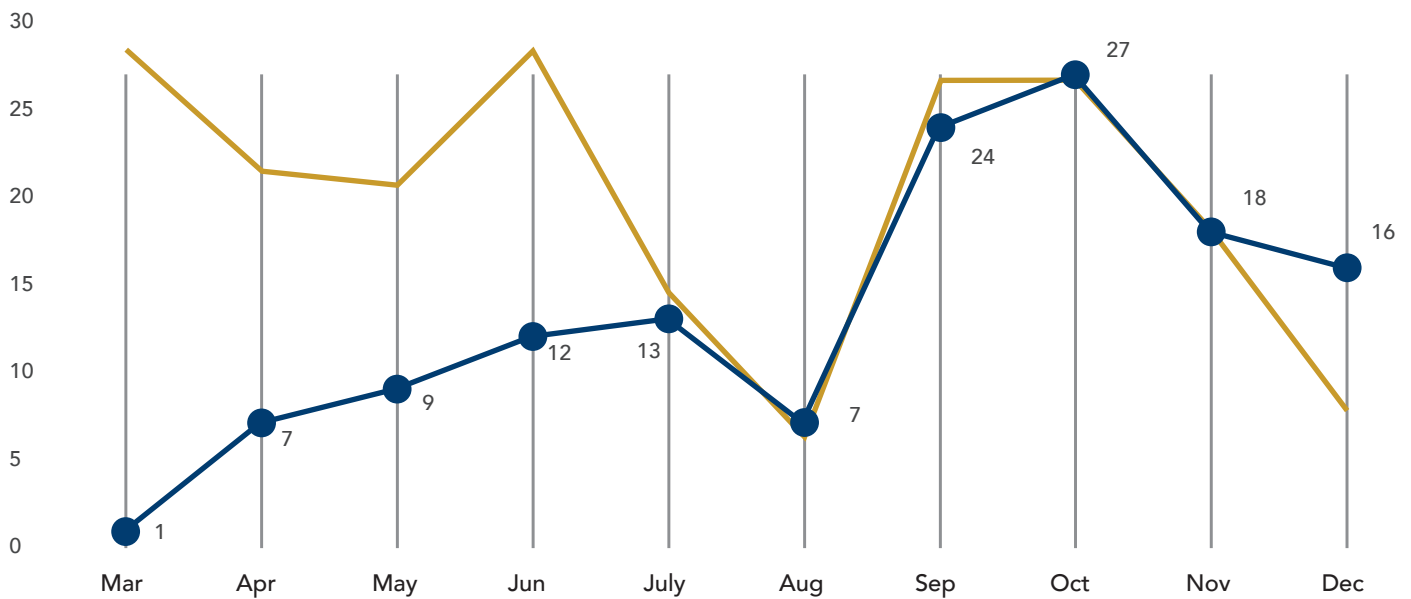


# COVID-19 Outbreaks

**Worksite**  
Total Outbreaks: 1,947



**Long-term Care Facilities**  
Total Outbreaks: 134



— Average size of outbreak  
— Number of outbreaks



# 115 Community Partners

29 Contracted and Granted CBOs

48 Other community-based partners, including churches and mosques

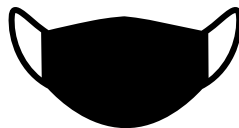
14 School districts and charter/private schools

24 State/County/Local Governments, Councils, and Foreign Consulates



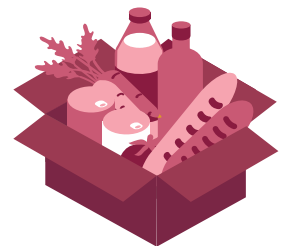
**11 locations**

Starting September 8, 2020



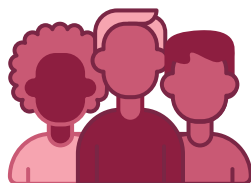
**10,949 masks**

distributed to community members and CBOs



**2,763 boxes of food**

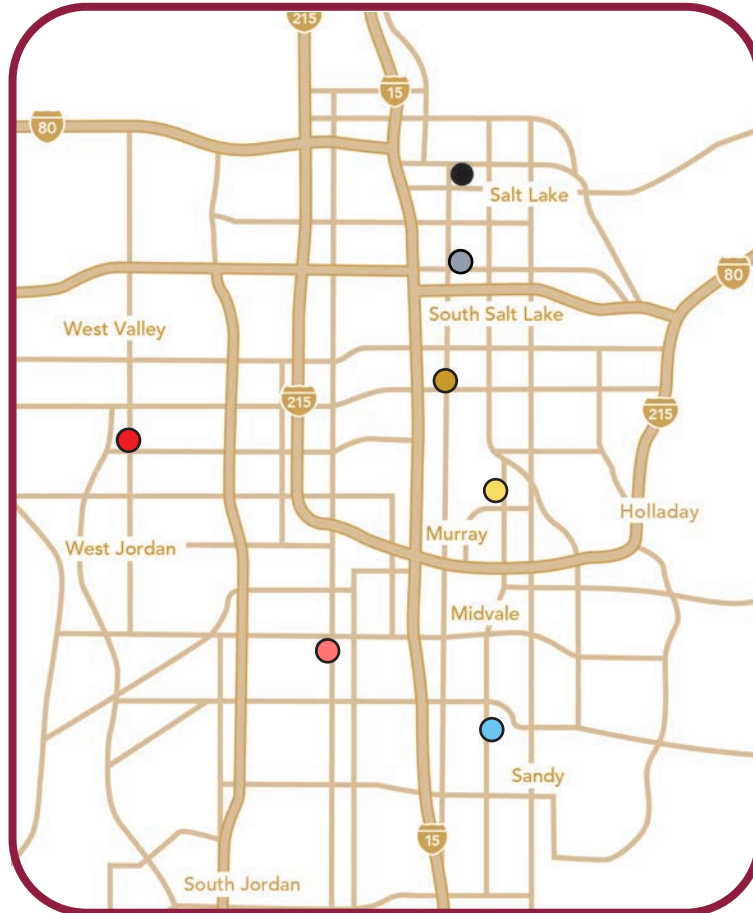
were delivered to 1,395 households.



**Overall, 5,707 people**

benefitted from the CHW Food Distribution Program

# Salt Lake County Health Department FACILITIES



- **Ellis R. Shipp  
Public Health Center**  
4535 South 5600 West  
West Valley City, UT 84120
- **Southeast Public  
Health Center**  
9340 South 700 East  
Sandy, UT 80470
- **Environmental Health**  
788 East Woodoak Lane  
Murray, UT 84107
- **South Redwood  
Public Health Center**  
7971 South 1825 West  
West Jordan, UT 84088
- **Salt Lake  
Public Health Center**  
610 South 200 East  
Salt Lake City, UT 84111
- **Travel Clinic**  
2001 S State Street  
Salt Lake City, UT 84190
- **South Main  
Public Health Center**  
3690 South Main Street  
South Salt Lake, UT 84115



Salt Lake County Health Department promotes and protects community and environmental health.

[www.SaltLakeHealth.org](http://www.SaltLakeHealth.org)