



# standard drawings

FLOOD CONTROL AND  
ENGINEERING  
2022 EDITION

THIS PAGE INTENTIONALLY LEFT BLANK

# TABLE OF CONTENTS

## SECTION 1 – ROADWAYS

### General

Exceptions to APWA Standards.....	
Legend and Symbols.....	100
Abbreviations.....	101

### Details

Roadway Section.....	110
Curb Ramps.....	135
Sidewalk Obstruction Detail.....	150
Defective Concrete.....	155

### Street Light Details

Arterial LED Street Light.....	160
Collector LED Street Light.....	161
Industrial LED Street Light.....	162
Residential LED Street Light.....	163

## SECTION 2 - STORM DRAIN FACILITIES

### Hardware

Curb Opening Frame and Grate.....	201
Ladder Rung.....	208

### Drainage Facility Guidelines

Detention Basin Guidelines.....	300
Outlet Structure Guidelines.....	301

## EXCEPTIONS TO APWA STANDARDS

**Salt Lake County has adopted the latest APWA Manual of Standard Plans and Manual of Standard Specifications, with the following exceptions:**

APWA Plan No./ Specification Section	Salt Lake County Exception
215, 216, 221.1, 221.2, 225, 229.1 & 229.2	APWA Pan No's. 221.1 and 221.2 are acceptable for use. APWA Plan No's. 215, 216, 225, 229.1, and 229.2 are not acceptable for use unless otherwise authorized by the Public Works Engineer.
221.1, 221.2	When adverse slopes, right-of-way limitations, or existing obstructions occur, Public Works Engineering may authorize deviations from the APWA apron/slope geometry.
251	Bituminous Concrete (asphalt) T-Patch thickness is 6" minimum for both residential and non-residential streets.
255	Bituminous Concrete (asphalt) T-Patch thickness is 6" minimum for both residential and non-residential streets.  2" mill and overlay are not required over T-Patch unless T-Patch length is greater than 300 feet.
332	The use of pre-cast "knock-out" boxes in storm drain facilities may be authorized by the Public Works Engineer, upon written request and provided the following conditions are met: a) All other requirements of APWA Plan 332 - Precast Box, are still met. b) Boxes shall have engineered design for AASHTO's HL-93 live load and shall be designed for lateral soil loads appropriate for the burial depth and conditions. c) The thickness of concrete collars where the pipe enters box at the knockout face shall extend 6" to 9" from the exterior face of the box and shall cover the entire side of the structure with no less than 12" concrete all the way around the pipe. Collars shall have a minimum of four (4) #4 dowels tying the collar to the precast box and include a #4 rebar ring or square tie around the pipe. d) Inspection and certification required on all precast boxes.
315.1, 315.2 & 316	Where APWA inlet plans refer to frame and grate per APWA Plan No. 308, contractor shall use SLCo Standard Plan 201, unless otherwise authorized by the Public Works Engineer.
381	(Note 2A) - Use granular backfill borrow for common fill.
382	(Note 2B) - Use granular backfill borrow for common fill. (Note 3A) - Minimum trench width is to be Pipe O.D. + 24" or (Pipe O.D. x 1.25)+12", whichever is greater.
33 05 00	Public storm drain pipes and culverts shall be 15" dia.or greater. Installation must follow manufacturer's direction. Provide a minimum amount of 1' cover over top of concrete pipes and 2' cover over the top of pipes of other materials unless approved otherwise by manufacturer and engineer. Corrugated metal pipe and vitrified clay pipe are not allowed.

SYMBOL LEGEND						LINE LEGEND		
DESCRIPTION	EXIST.	PROP.	DESCRIPTION	EXIST.	PROP.	DESCRIPTION	EXISTING	PROPOSED
<b>SANITARY SEWER</b>			<b>IRRIGATION</b>			STORM DRAIN	SD	SD
CLEANOUT			IRRIGATION SHUT-OFF VALVE			SANITARY SEWER	SS	SS
SS MANHOLE			IRRIGATION CONTROL VALVE BOX			WATER	W	W
SS VALVE			IRRIGATION GATE			IRRIGATION	IRR	IRR
SS METER			<b>NATURAL GAS</b>			NATURAL GAS	G	G
SEWER STUB			GAS METER			OVERHEAD POWER	OHE	OHE
<b>STORM DRAIN</b>			GAS VALVE			UNDERGROUND POWER	E	E
CATCH BASIN			GAS MANHOLE			OVERHEAD TELEPHONE	OHT	OHT
DRY WELL			<b>SITE</b>			UNDERGROUND TELEPHONE	T	T
SD CLEAN OUT BOX			BOLLARD			FIBER OPTIC	FO	FO
FLARE END			BOULDER			CABLE TELEVISION	CTV	CTV
<b>COMMUNICATION</b>			DRINKING FOUNTAIN			FENCE		
TELE. MANHOLE			FLAGPOLE			MAJOR CONTOUR	4520	4520
TELE. PEDESTAL			GATE			MINOR CONTOUR		
TELE. POLE			MAIL BOX			TOP OF BANK	TDB	TDB
TV PEDESTAL			PEDESTRIAN SIGNAL			TOE OF SLOPE	TOE	TOE
CABLE TV			SCHOOL SIGN			PROPERTY LINE		
<b>DOMESTIC WATER</b>			SIGN			PROPERTY LINE (OPTIONAL)	P/L	P/L
FIRE HYDRANT			SIGN			RIGHT OF WAY	R/W	R/W
SPIGOT			SPOT ELEVATION			TEMPORARY EASEMENT	T/E	T/E
WATER MANHOLE			TREE (SHRUB)			PERMANENT EASEMENT	P/E	P/E
WATER METER			TREE			ROAD CENTERLINE		
WATER VALVE			TEST HOLE			ROAD ASPHALT		
YARD HYDRANT			WELL			ROAD GRAVEL	EG	EG
<b>ELECTRIC</b>			WELL (MONITORING)			CURB AND GUTTER		
ELEC. MANHOLE			CONCRETE FLATWORK			ATMS	ATMS	ATMS
ELEC. METER			ASPHALTIC CONCRETE			SAWCUT	SAW	SAW
ELEC. TRANS.			<b>SURVEY</b>			GRADING FILL LIMIT	FILL	FILL
JUNCTION BOX			CAP			GRADING CUT LIMIT	CUT	CUT
GUY WIRE			CTRL PT			DITCH/SWALE FLOWLINE		
POWER STUB								
POWER/UTILITY POLE								
STREET LIGHT								
STREET LIGHT WITH ARM								
TRAFFIC SIGNAL POLE								



# LEGEND AND SYMBOLS

STANDARD PLAN  
100  
SHEET 1 OF 1

REV. 2022-0

## ABBREVIATIONS

ABBREV.	TERM
ALUM	ALUMINUM
APPROX.	APPROXIMATELY
ASSY	ASSEMBLY
∠	ANGLE
@	AT (MEASUREMENTS)
BC	BEGINNING OF CURVE
BFS	BEGIN FULL SUPER
BLDG	BUILDING
B.M.	BENCH MARK
BNC	BEGIN NORMAL CROWN
BNS	BEGIN NORMAL SHOULDER
BOA	BEGINNING OF ALIGNMENT
BP	BEGINNING OF PROFILE
BSC	BITUMINOUS SURFACE COURSE
BSW	BACK OF SIDEWALK
BVC	BEGIN VERTICAL CURVE
BVCE	BVC ELEVATION
BVCS	BVC STATION
B.W.	BOTH WAYS
C	CHANNEL (STRUCTURAL)
CJ	CONTROL JOINT
ε or CL	CENTER LINE
CLR	CLEARANCE
CMP	CORRUGATED METAL PIPE
CO	CLEANOUT
CONC	CONCRETE
CONT	CONTINUOUS
CPLG	COUPLING
CTR	CENTER
CU FT	CUBIC FEET
CU YD	CUBIC YARD
DEG OR °	DEGREE
DET	DETAIL
DIA OR ∅	DIAMETER
D.I.P.	DUCTILE IRON PIPE
DIST	DISTRIBUTION
DWG	DRAWING
EA	EACH
EC	END OF CURVE
EFS	END FULL SUPER
ELB	ELBOW
ELEV OR EL	ELEVATION
ENC	END NORMAL CROWN
ENS	END NORMAL SHOULDER
EOA	END OF ALIGNMENT
EP	END OF ALIGNMENT
E.W.	EACH WAY
EXIST	EXISTING
EVC	END VERTICAL CURVE
EVCE	EVC ELEVATION
EVCS	EVC STATION

## ABBREVIATIONS

ABBREV.	TERM
FF	FINISH FLOOR
FG	FINISH GRADE
FH	FIRE HYDRANT
FL	FLOW LINE
FLG	FLANGE
FT OR '	FEET
FTG	FOOTING
GALV	GALVANIZED
GB	GRADE BREAK
GV	GATE VALVE
HORIZ	HORIZONTAL
HP	HIGH POINT
ID	INSIDE DIAMETER
IE	INVERT ELEVATION
IN. OR "	INCH
INV.	INVERT
K	CURVE COEFFICIENT
L	LEFT
LB	LINE BEGINNING
LB OR #	POUND
LF	LINEAL FEET
LN	LINEAL
LP	LOW POINT
MAX	MAXIMUM
MIN	MINIMUM
NO. OR #	NUMBER
O.C.	ON CENTER
OVERALL HP	OVERALL HIGH POINT
OVERALL LP	OVERALL LOW POINT
PC	POINT OF CURVATURE
PCC	POINT OF COMPOUND CURVATURE
PE	POLYETHYLENE
PI	TANGENT-TANGENT INTERSECT
PL OR ε	PLATE OR PROPERTY LINE
PRC	POINT OF REVERSE CURVATURE
PT	END OF CURVE
PVC	POLYVINYL-CHLORIDE
PVI	POINT OF VERTICAL INTERSECTION
R	RADIUS OR RIGHT
R&R	REMOVE & REPLACE
RC	REVERSE CROWN
RCP	REINFORCED CONCRETE PIPE
REM	REMOVE
REQ'D	REQUIRED
REV	REVISION
R/W OR ROW	RIGHT-OF-WAY
S	SLOPE

## ABBREVIATIONS

ABBREV.	TERM
SBO	SHOULDER BREAKOVER
SPEC	SPECIFICATION
STA	STATION
STD	STANDARD
STL	STEEL
ST STL	STAINLESS STEEL
TBC	TOP BACK OF CURB
TFC	TOP FACE OF CONCRETE
TOB	TOP OF BANK
TOC	TOP OF CONCRETE
TOF	TOP OF FOOTING
TOP	TOP OF PIPE
TOW	TOP OF WALL
TYP	TYPICAL
U.N.O.	UNLESS NOTED OTHERWISE
VCC	VERTICAL COMPOUND CURVE
VCCE	VCC ELEVATION
VCCS	VCC STATION
VRC	VERTICAL REVERSE CURVE
VRCE	VRC ELEVATION
VRCS	VRC STATION
W/	WITH
W/O	WITHOUT
W/REQ'D	WHERE REQUIRED



## ABBREVIATIONS

STANDARD PLAN

101

SHEET 1 OF 1

REV. 2022-0

**NOTES:**

Materials, construction, and workmanship shall be in accordance with the current edition of "APWA Manual of Standard Specifications" addendums, and modifications thereto; and as directed by the Salt Lake County Public Works Engineer. Reference to specific sections of APWA does not limit requirements to that section.

**SUBGRADE:** See APWA Section 32 05 10 (Backfilling Roadways) for preparation and proof rolling of roadway, curb and gutter, and sidewalk.

**UNTREATED BASE COURSE:** Shall be Grade 1 as per APWA Section 32 11 23 (Aggregate Base Course). Place fill in no greater than 6 inch lifts after compaction as per APWA Section 32 05 10 (Backfilling Roadways). Compact to no less than 95% relative density based on the Modified Proctor Density as per APWA Section 31 23 26 (Compaction).

**PRIME COAT:** Prime coat, as directed by the engineer, on untreated base course before placing asphalt. See APWA Section 32 12 13.19 (Prime Coat).

**TACK COAT:** Grade SS-1, CSS-1, or CSS-1h emulsified asphalt shall be applied to existing asphalt concrete or portland cement concrete surfaces prior to placing asphalt concrete pavement as per APWA Section 32 12 13.13 (Tack Coat).

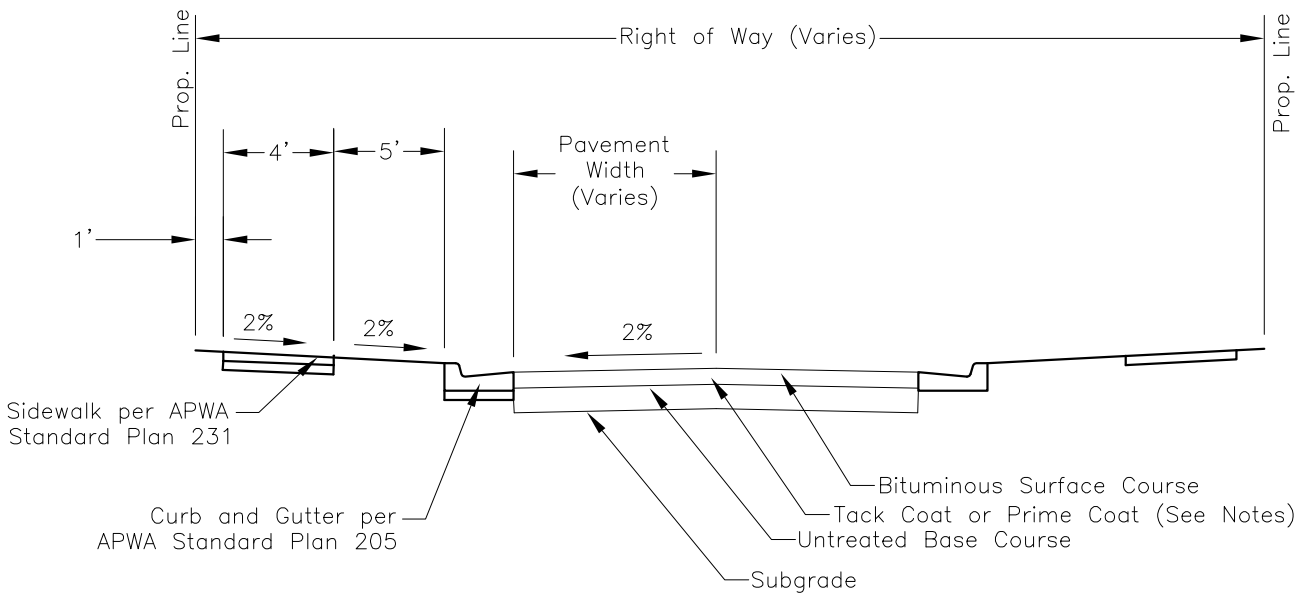
**ASPHALT CONCRETE:** Unless otherwise approved in writing by the Salt Lake County Public Works Engineer or their designated representative, all roads shall be considered Road Class III and the bituminous concrete mix designator used shall correspond to the table on Sheet 2. Minimum allowed roadway section – 3 inches asphalt concrete on 8 inches untreated base course. Thicker sections required for collectors, minor arterials, and roadways with heavy truck traffic. Construct road mix bituminous surface course only when air temperature in the shade and road bed temperature are greater than 50 degrees.



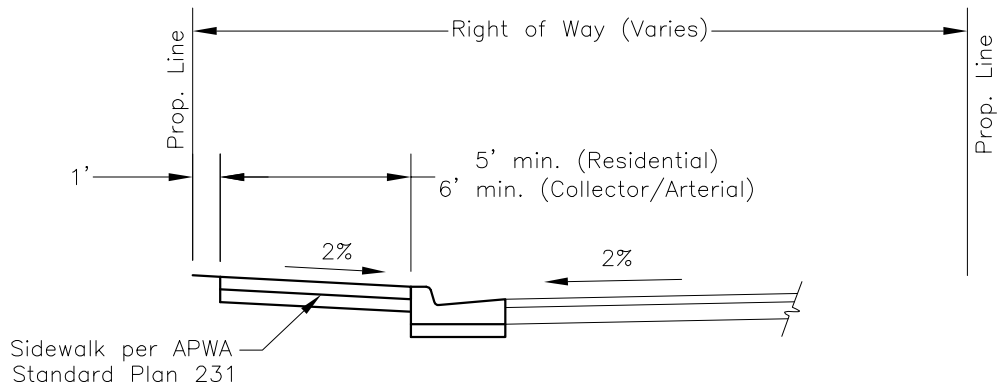
**ROADWAY SECTION**

STANDARD PLAN  
110  
SHEET 1 OF 2

REV. 2022-0



### STANDARD CONFIGURATION



### CONTIGUOUS SIDEWALK

BITUMINOUS CONCRETE MIX DESIGNATOR BY ROADWAY CLASSIFICATION	
ROADWAY CLASSIFICATIONS*	BITUMINOUS CONCRETE MIX DESIGN**
Local/Private – Collector (60')	PG58-28, DM-1/2, 50 Blow
Collector (80') – Arterial (106')	PG64-34, DM-1/2, 50 Blow
Canyon Roads Cat. 2-6	PG58-28, DM-1/2, 50 Blow
Canyon Roads Cat. 1	PG64-34, DM-1/2, 50 Blow

\* See Section 14.12.100 of the municipal code for details.

\*\* See APWA 32 12 05.



## ROADWAY SECTION

STANDARD PLAN

110

SHEET 2 OF 2

REV. 2022-0



**NOTES:**

SLCo Standard Drawings are intended to supplement all ADA and APWA guidelines and requirements. These drawings are for clarification, but do not alter, reduce or override any Federal ADA requirements.

Materials, construction, and workmanship shall be in accordance with the current edition of "APWA Manual of Standard Specifications" addendums, and modifications thereto; and as directed by the Public Works Engineer. Reference to specific sections of APWA does not limit requirements to that section.

**SUBGRADE:** See APWA Section 32 05 10 (Backfilling Roadways) for preparation and proof rolling of roadway, curb and gutter, and sidewalk.

**UNTREATED BASE COURSE:** Shall be Grade 1 as per APWA Section 32 11 23 (Crushed Aggregate Base). Place fill in no greater than 6 inch lifts as per APWA Section 32 05 10 (Backfilling Roadways). Compact to no less than 95% relative density based on the Modified Proctor Density as required in APWA Section 31 23 26 (Compaction).

**CONCRETE:** Concrete shall be Class 4000 as per APWA 03 30 04 (Concrete).

**EXPANSION JOINT:** Expansion joint shall be 1/2" thick preformed expansion joint filler F1-bituminous mastic as per APWA Section 32 13 73 (Concrete Paving Joint Sealants) at each interface as shown.

**DETECTABLE WARNINGS:** Locate raised truncated domes so that the edge nearest the curb line is within 6 to 8 inches from the curb line excluding Curb Ramp Types H, and I where  $X < 5$  feet (see sheet 6 of 6). Provide 2-foot of truncated dome pattern at the lower end of all curb ramps extending the full width of the curb ramp. See typical dimensions on Type B Curb Ramp. Detectable warnings shall contrast visually with adjoining surfaces, either light-on-dark, or dark-on-light. Glued or surface applied domes are not acceptable for new construction. Stamped domes are not allowed under any conditions. Truncated dome materials shall be selected from the County approved materials list.

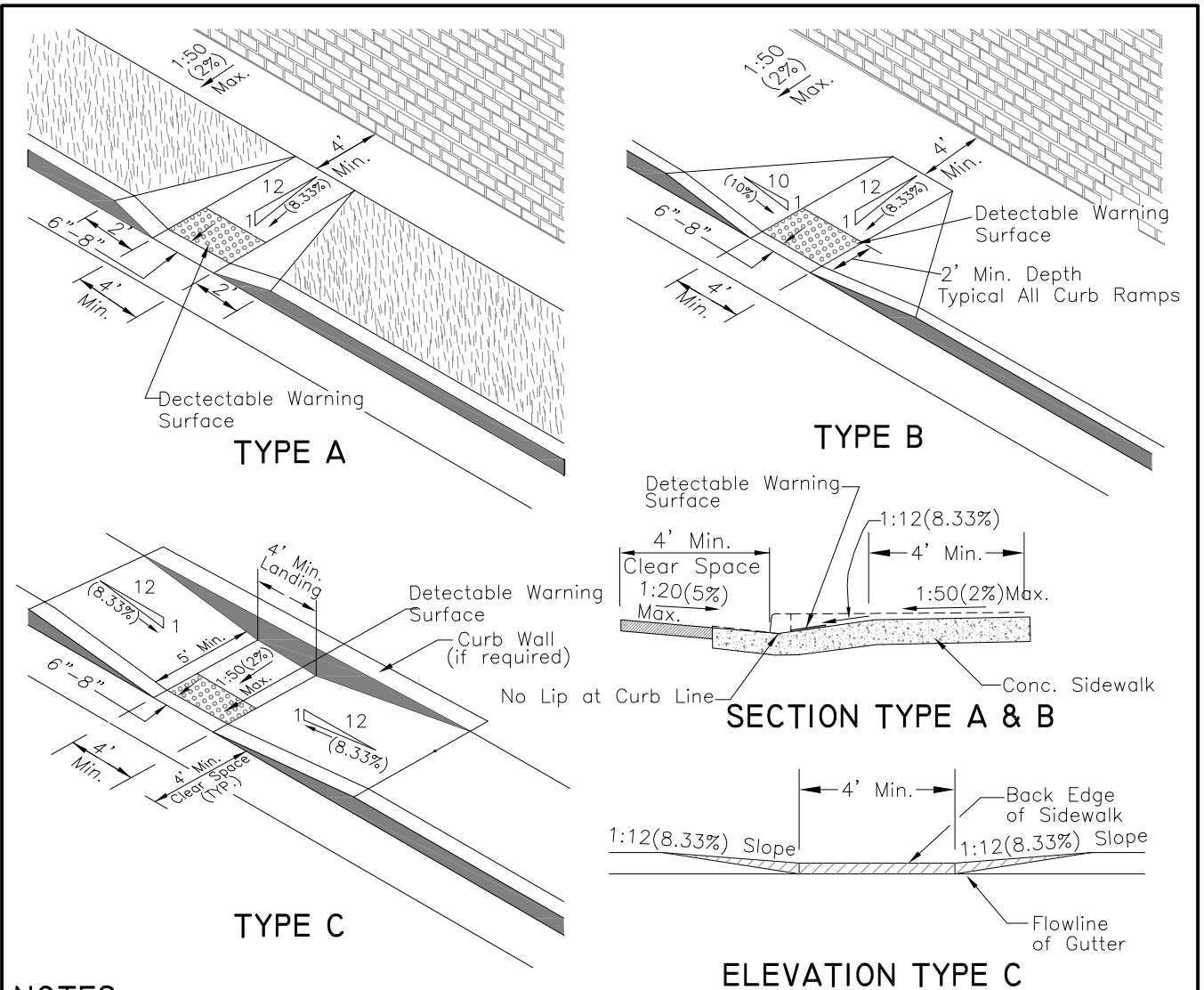
**RAMPS:** Length of any ramp not to exceed 15 feet. Ramp shown are examples only, site specific ramps may require modification and additional features to comply with current Federal ADA Guidelines.



**CURB RAMPS**

STANDARD PLAN  
135  
SHEET 1 OF 6

REV. 2022-0



**NOTES:**

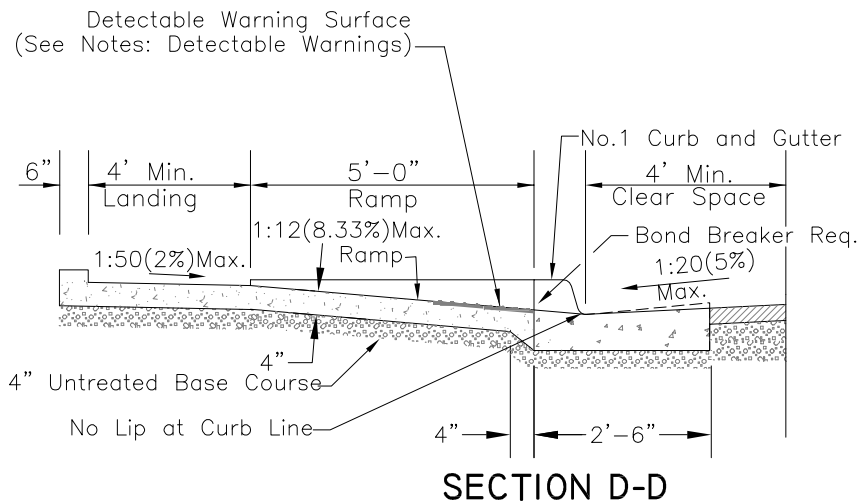
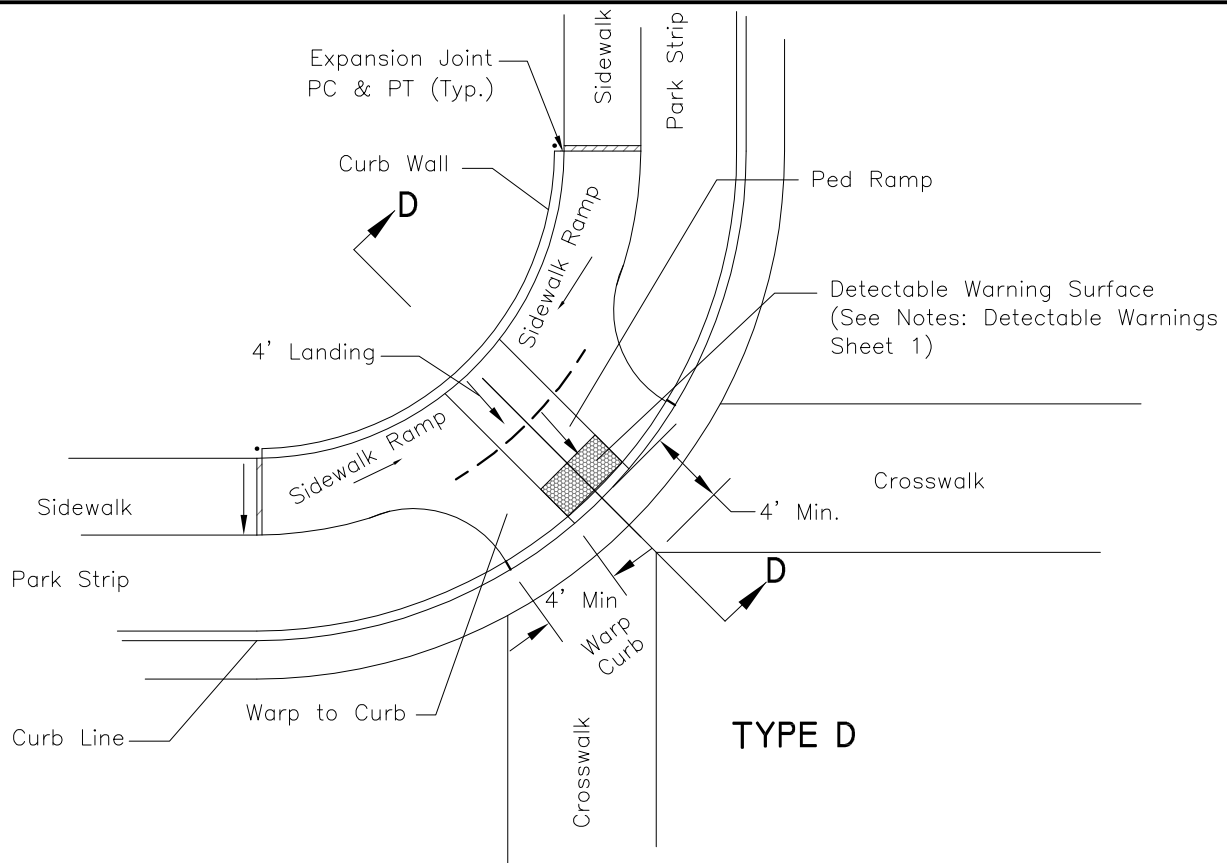
1. TYPE A  
The entire ramp slope is achieved outside the sidewalk section. A concrete warped curb section shall begin 2' from edge of detectable warning surface.
2. TYPE B  
Provide at least 4' of sidewalk width beyond the ramp.
3. TYPE C  
Use this type of ramp when there is insufficient width to accommodate TYPE B curb ramp.
4. No pull box, utility vault, utility pole, manhole or similar appurtenance shall be located within the sidewalk ramp area.
5. It is desirable to locate all drain inlets out of sidewalk ramp area. Use of drain inlet within ramp area requires special design of inlets.
6. See Detail 'A' (sheet 4 of 6) for raised truncated dome detail on detectable warning surface.
7. Maximum cross slope of adjoining gutters and road surface immediately adjacent to the curb ramp, or accessible route, shall not exceed 1:20(5%).
8. Running and cross slope at midblock crossings shall be permitted to be warped to meet street or highway grade.



**CURB RAMPS**

STANDARD PLAN  
135  
SHEET 2 OF 6

REV. 2022-0



**NOTES:**

Landing: Cross Slope: 1:50(2%) Max. Towards The Street.

Ped Ramp Slope: 1:12(8.3%) Max.

Sidewalk Ramp: 1" Rise Required Length May Vary  
Slope May Vary, But 1:12(8.3%) Max.

Sidewalk: Cross Slope 1:50(2%) Max. Towards The Street.

Curb Wall: 6" Wide As Needed.



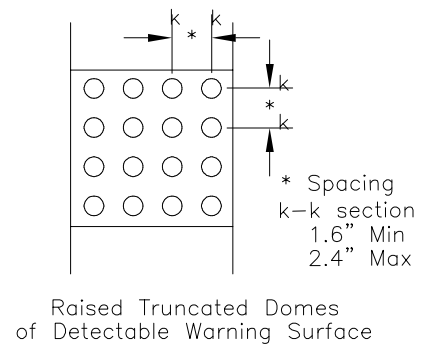
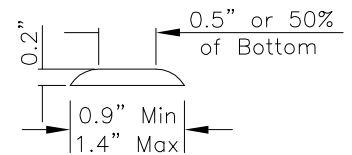
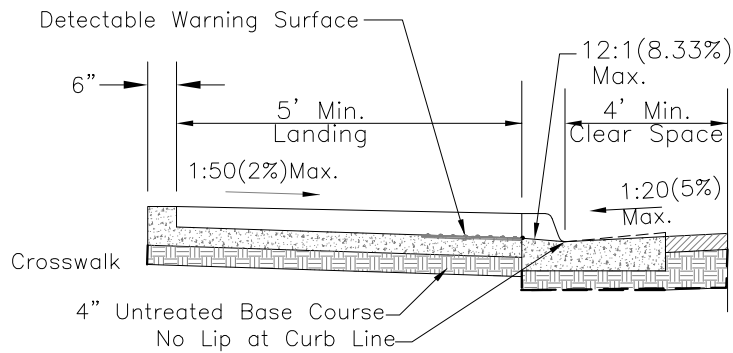
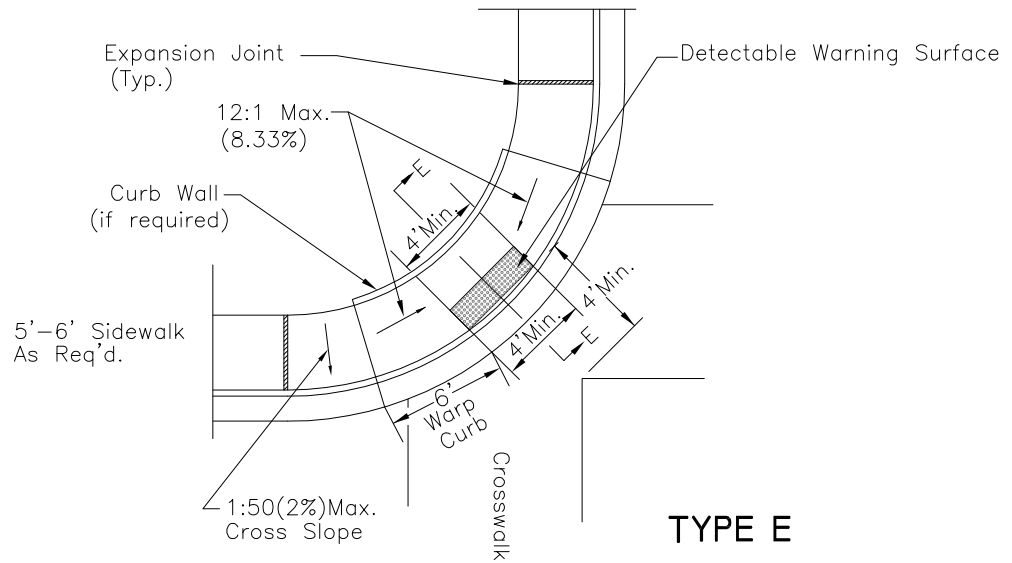
**CURB RAMPS**

STANDARD PLAN

135

SHEET 3 OF 6

REV. 2022-0



**CURB RAMPS**

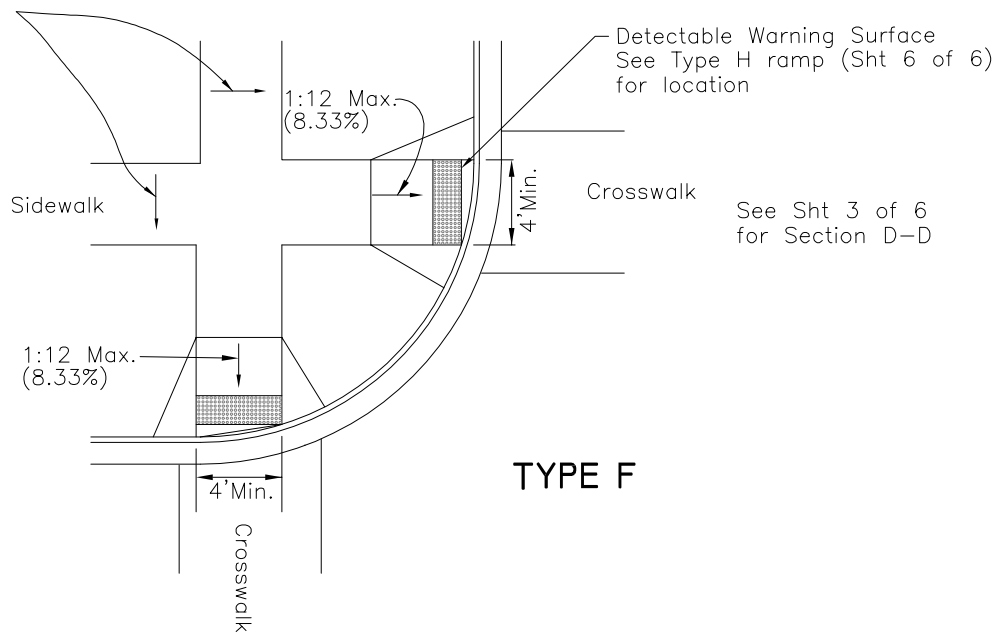
STANDARD PLAN

135

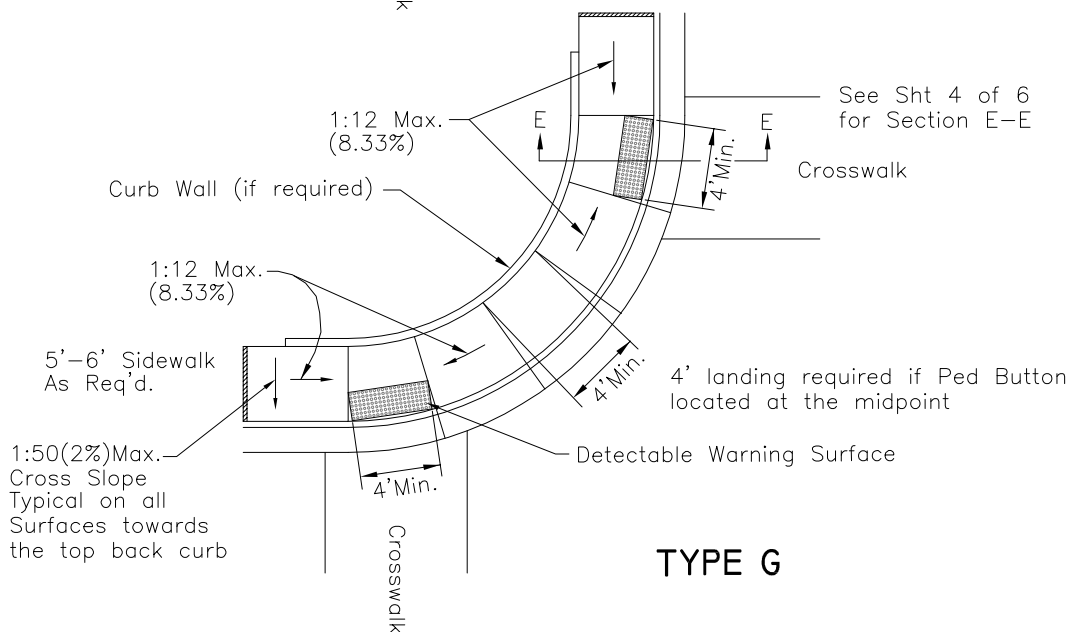
SHEET 4 OF 6

REV. 2022-0

1:50(2%)Max.  
Cross Slope



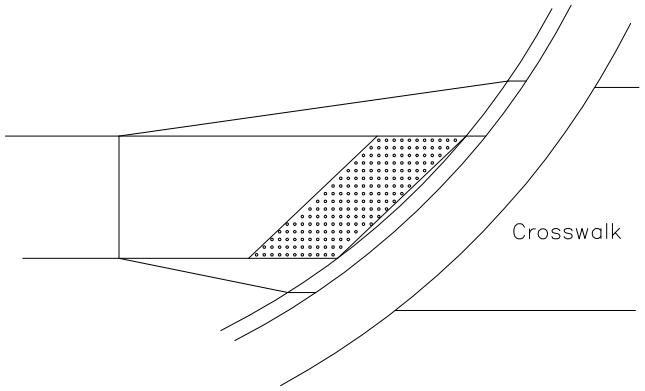
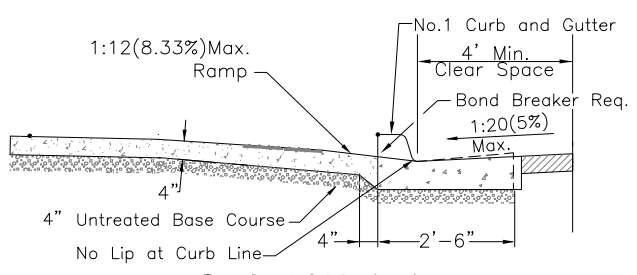
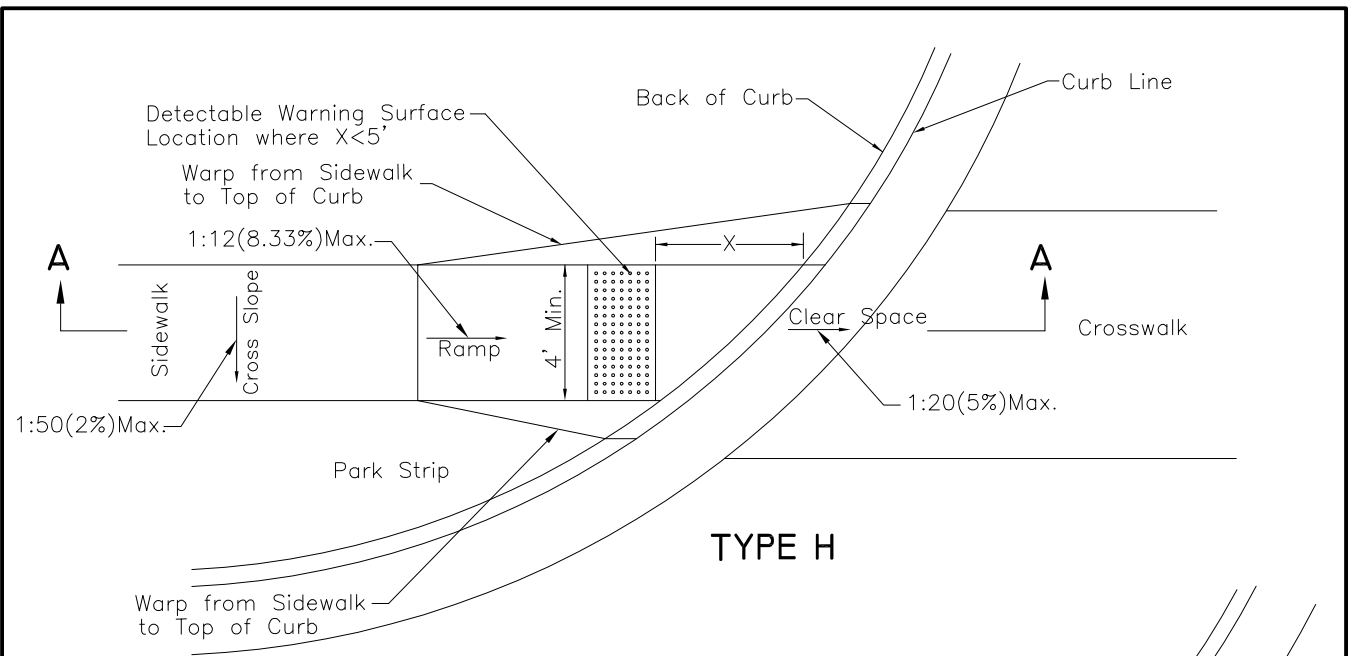
**TYPE F**



**TYPE G**

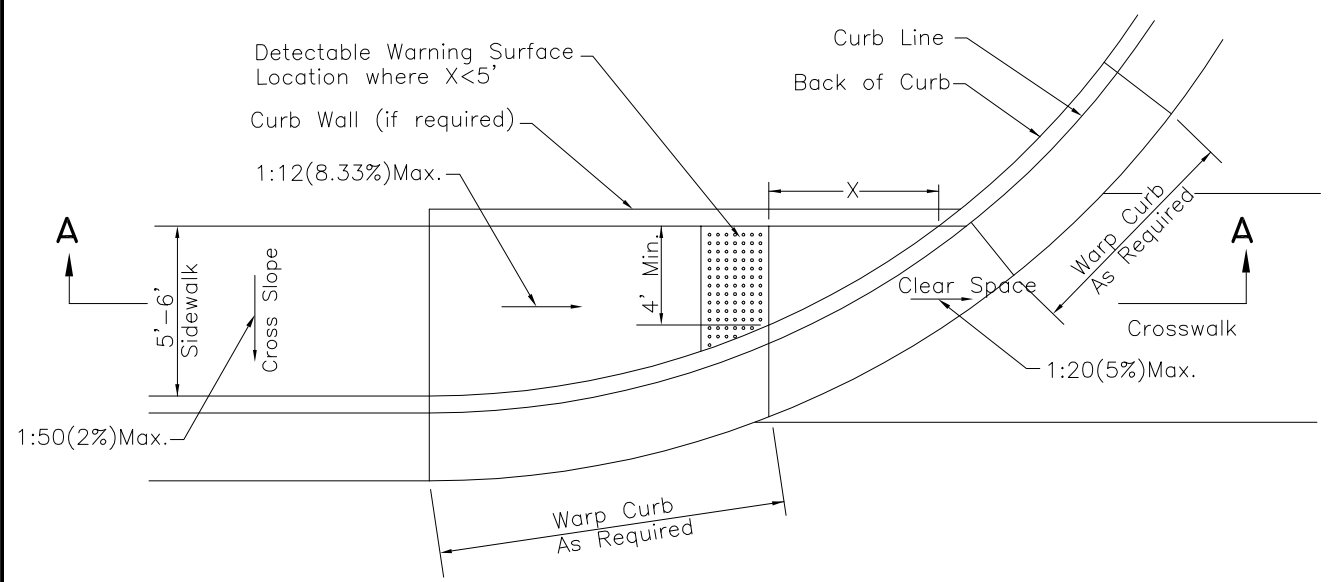
**NOTES:**

1. Provide detectable warning surface for full width of ramp, min. 4' width.
2. Detectable warning surface is required wherever curb is absent.
3. When detectable warning surface is cut, grind remaining portion of any cut domes. Seal all cut panel edges to prevent water damage.
4. Locate curb cut within crosswalk.



**SECTION A-A**

**REQUIRED DETECTABLE WARNING SURFACE LOCATION WHERE X > 5' FOR TYPE H & TYPE J**



**TYPE J**



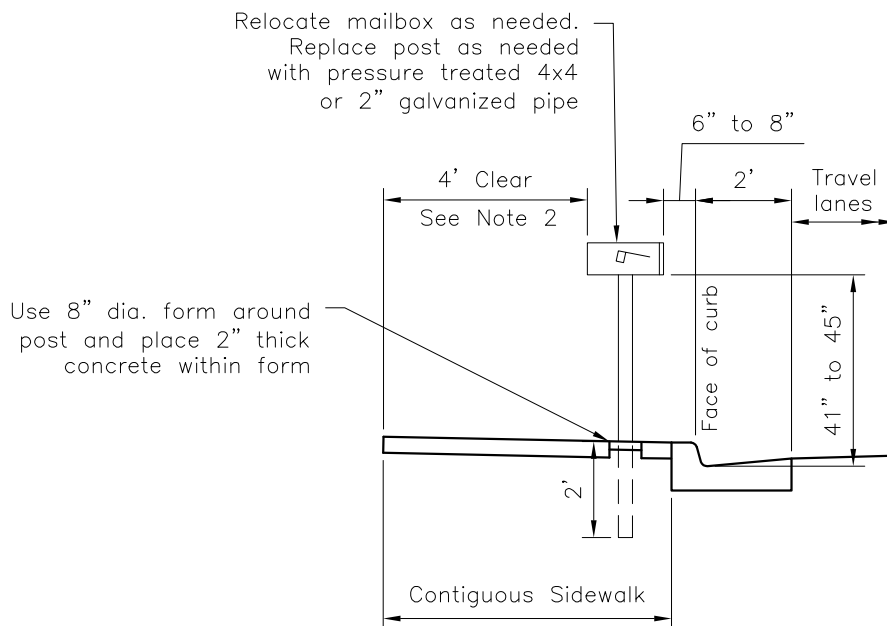
**CURB RAMPS**

STANDARD PLAN  
135  
SHEET 6 OF 6

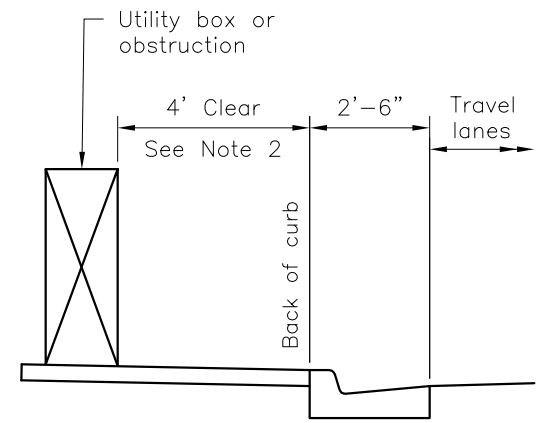
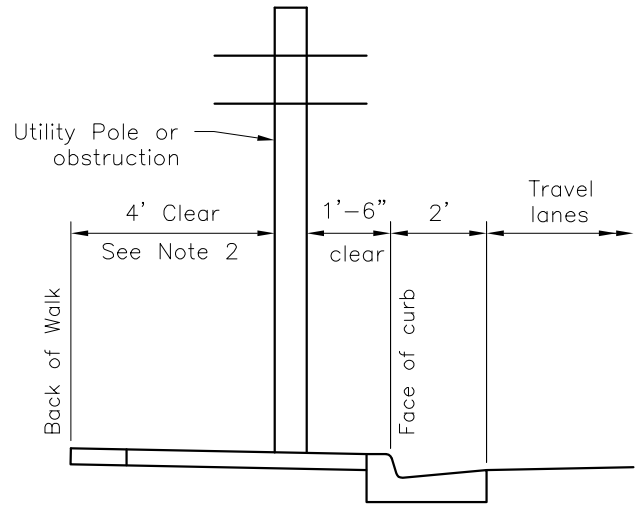
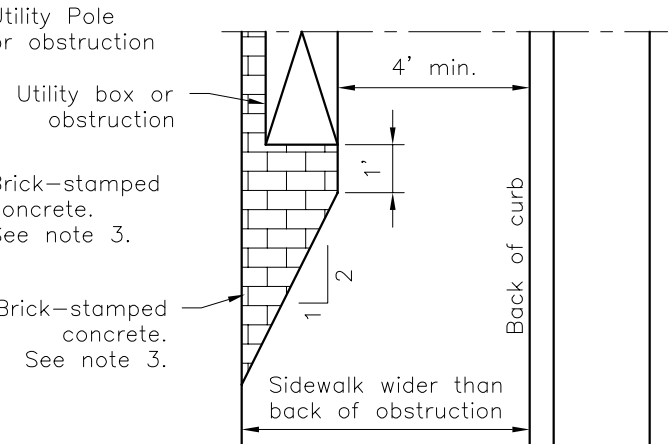
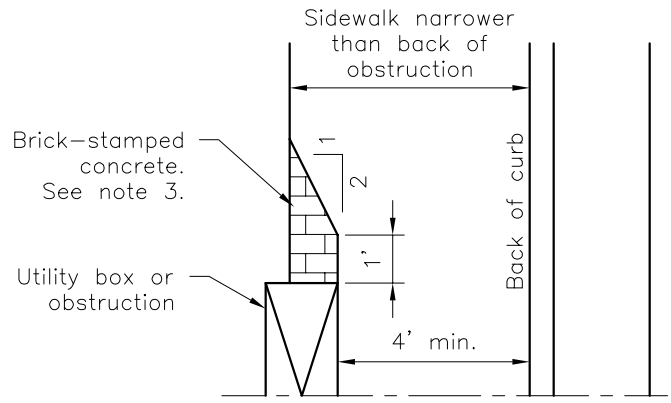
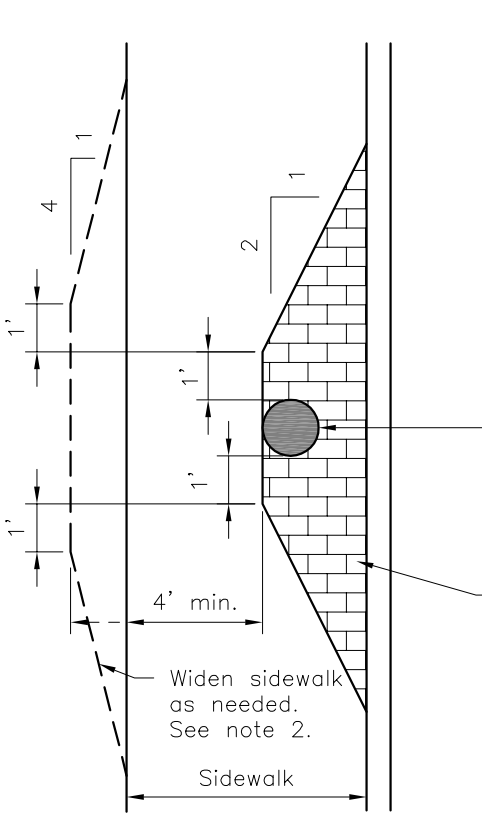
REV. 2022-0

## NOTES:

1. This detail has been developed to provide a location for utilities when sidewalk is placed contiguous with curb and gutter.
2. Minimum sidewalk clear width adjacent to obstruction shall be 4' unless otherwise approved by the Public Works Engineer. Verify with the engineer that the appropriate right-of-way width exists where sidewalk must be widened around an obstruction.
3. Brick-stamped and colored concrete areas shall match the thickness of concrete and base course of the adjacent sidewalk.



MAILBOX RELOCATION



CURB-SIDE OBSTRUCTION

BACK-OF-WALK OBSTRUCTION



SIDEWALK OBSTRUCTION  
DETAIL

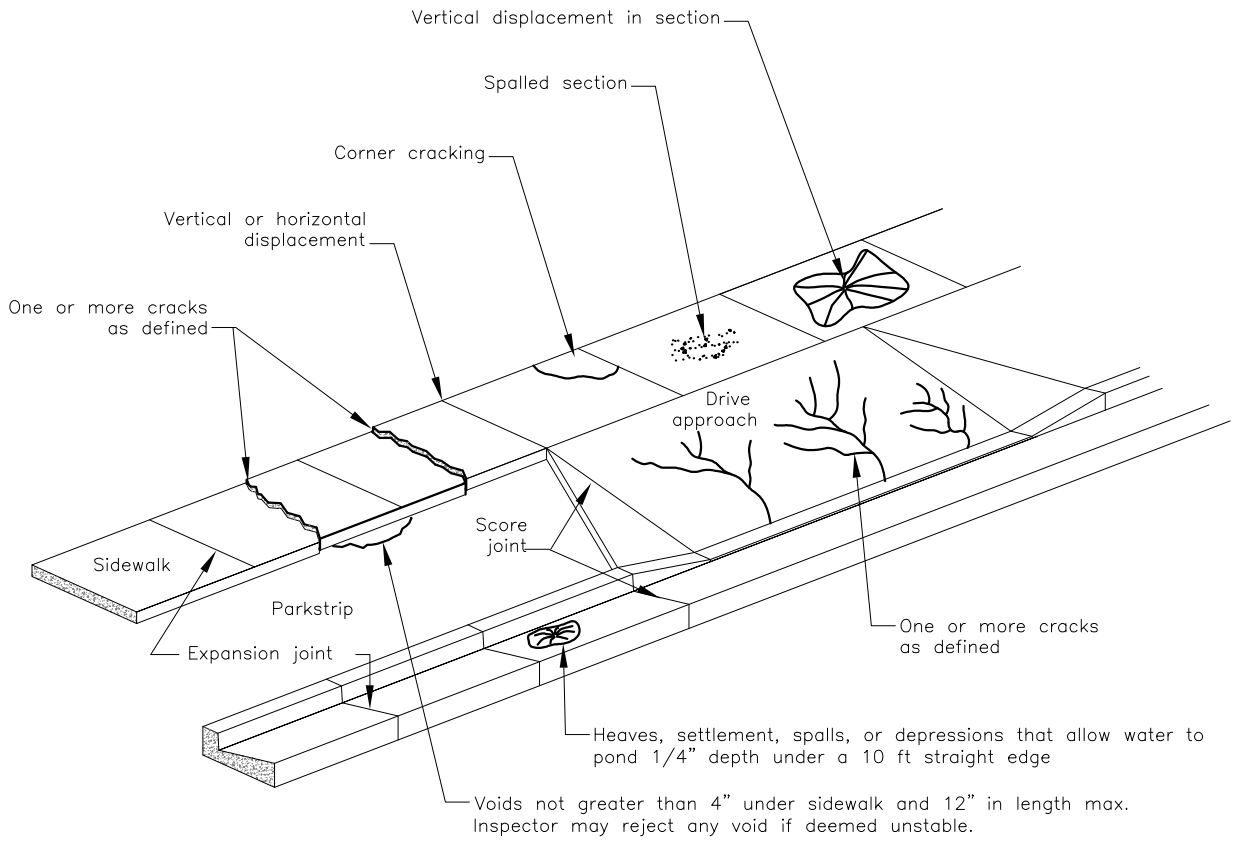
STANDARD PLAN  
150  
SHEET 2 OF 2

REV. 2022-0



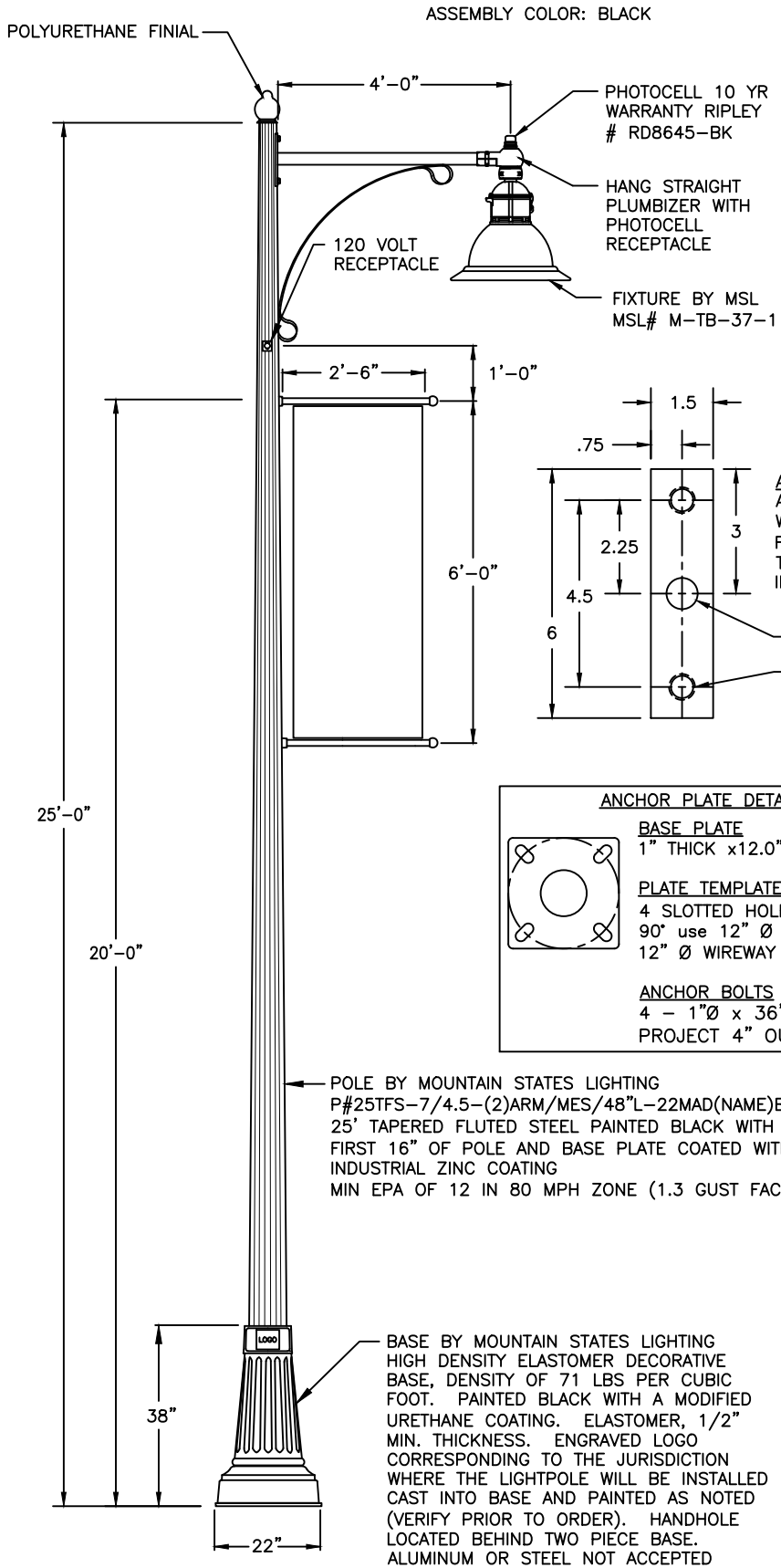
## NOTES:

1. Concrete is considered defective if any component has one or more of the conditions shown on sheet 2. County may require section replacement for any latent defects not described.
2. Defective concrete resulting from an individual crack is defined as having at least one of the following:
  - horizontal separation wide enough to insert a dime
  - vertical displacement resulting from crack
  - spalling, spidering, or chipping of crack
3. Defective concrete resulting from multiple cracks is defined as having at least one of the following:
  - one section with multiple cracks where both ends of crack link with slab edge, joint, or another crack.
  - adjacent sections with one or more cracks where both ends of crack link with slab edge, joint, or another crack.
4. Defective concrete resulting from vertical displacement is defined as one of the following:
  - at time of performance bond release: any vertical displacement at construction joint or expansion joint.
  - concrete not under warranty: vertical displacement at construction joint or expansion joint greater than  $\frac{1}{4}$ ".
5. Defective concrete resulting from spalls is defined as one of the following:
  - at time of performance bond release: any spalling.
  - concrete not under warranty: spalling covering more than 20% of a section.

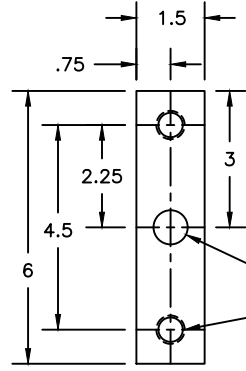




Mountain States Lighting  
 609 Krista Court  
 Murray, Utah 84123  
 Phone 801-268-4879  
 Fax 801-605-9058



**FIXTURE SPECIFICATIONS**  
 CATALOG NO.: MSL# M-TB-37-1  
 OPTICAL SYSTEM: FLAT ARRAY W GLOBE  
 IES CLASS.: TYPE III  
 INPUT WATTAGE: 150W  
 SERIES: SOLID STATE LIGHTING  
 CCT: 3000K  
 LINE VOLTAGE: 120:277V  
 PAINT: TEXTURED BLACK  
 INCLUDES: TERMINAL BLOCK  
 WATTAGE SWITCH



**ANCHOR PLATE DETAIL**

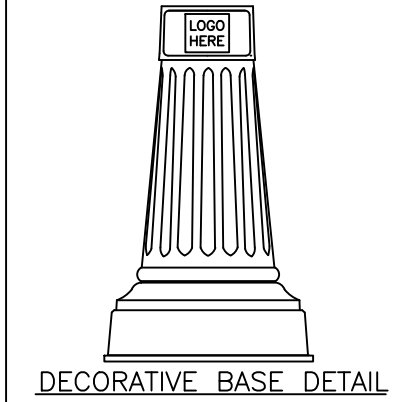
**BASE PLATE**  
 1" THICK x 12.0" x 12.0" (Steel)

**PLATE TEMPLATE**  
 4 SLOTTED HOLES (1 1/8" x 2 1/4")  
 90° use 12" Ø BOLT CIRCLE  
 12" Ø WIREWAY (CNTR'D.)

**ANCHOR BOLTS**  
 4 - 1"Ø x 36" LONG HEADED BOLT  
 PROJECT 4" OUT OF CONC.

POLE BY MOUNTAIN STATES LIGHTING  
 P#25TFS-7/4.5-(2)ARM/MES/48"L-22MAD(NAME)BK  
 25' TAPERED FLUTED STEEL PAINTED BLACK WITH FIRST 16" OF POLE AND BASE PLATE COATED WITH INDUSTRIAL ZINC COATING  
 MIN EPA OF 12 IN 80 MPH ZONE (1.3 GUST FACTOR)

BASE BY MOUNTAIN STATES LIGHTING  
 HIGH DENSITY ELASTOMER DECORATIVE BASE, DENSITY OF 71 LBS PER CUBIC FOOT. PAINTED BLACK WITH A MODIFIED URETHANE COATING. ELASTOMER, 1/2" MIN. THICKNESS. ENGRAVED LOGO CORRESPONDING TO THE JURISDICTION WHERE THE LIGHTPOLE WILL BE INSTALLED (VERIFY PRIOR TO ORDER). HANDHOLE LOCATED BEHIND TWO PIECE BASE. ALUMINUM OR STEEL NOT ACCEPTED



ARTERIAL LED STREET LIGHT

STANDARD PLAN  
 160  
 SHEET 1 OF 2

REV. 2021-0

– USE THE LOGO CORRESPONDING WITH THE JURISDICTION WHERE THE LIGHT WILL BE INSTALLED. EXAMPLE LOGOS SHOWN BELOW.



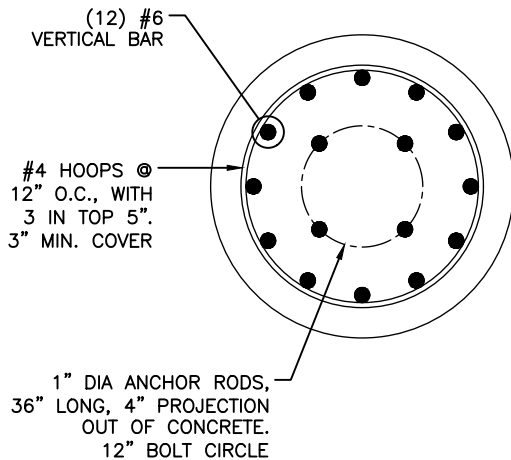
COLOR: COPPER



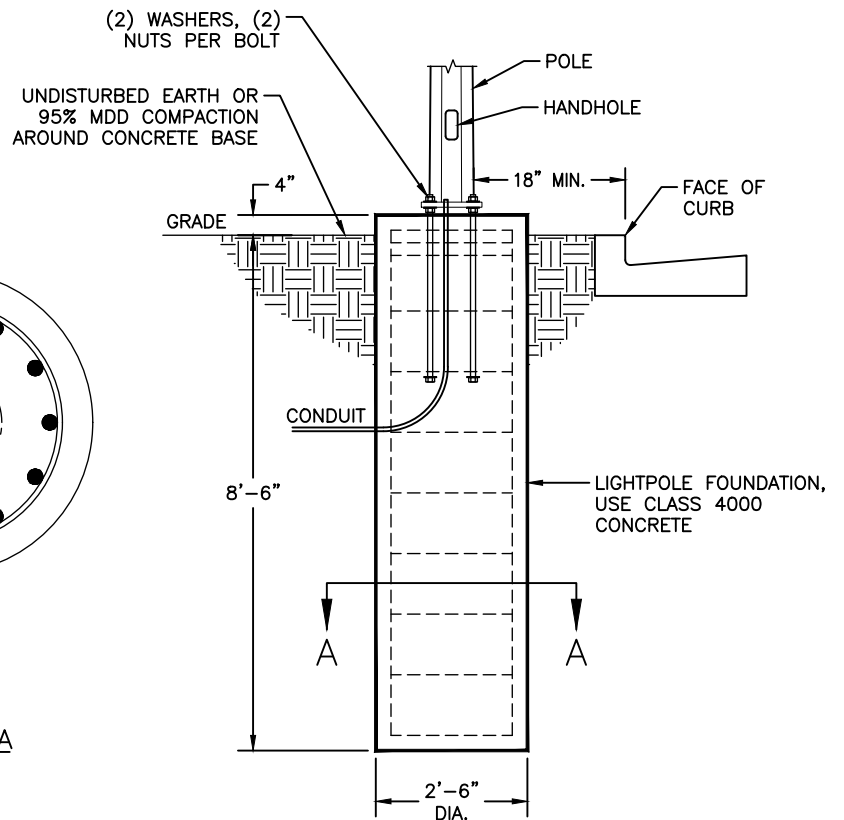
COLOR: SILVER

**NOTES:**

1. SEE SLCO STANDARD DRAWING 150 FOR PLACEMENT IN CONTIGUOUS SIDEWALK.
2. FOUNDATION DETAILS CAN VARY FROM THOSE SHOWN HERE WITH A SITE SPECIFIC FOUNDATION DESIGN THAT HAS BEEN REVIEWED AND APPROVED BY SALT LAKE COUNTY ENGINEERING DEPARTMENT.



SECTION A-A



FOUNDATION DETAILS

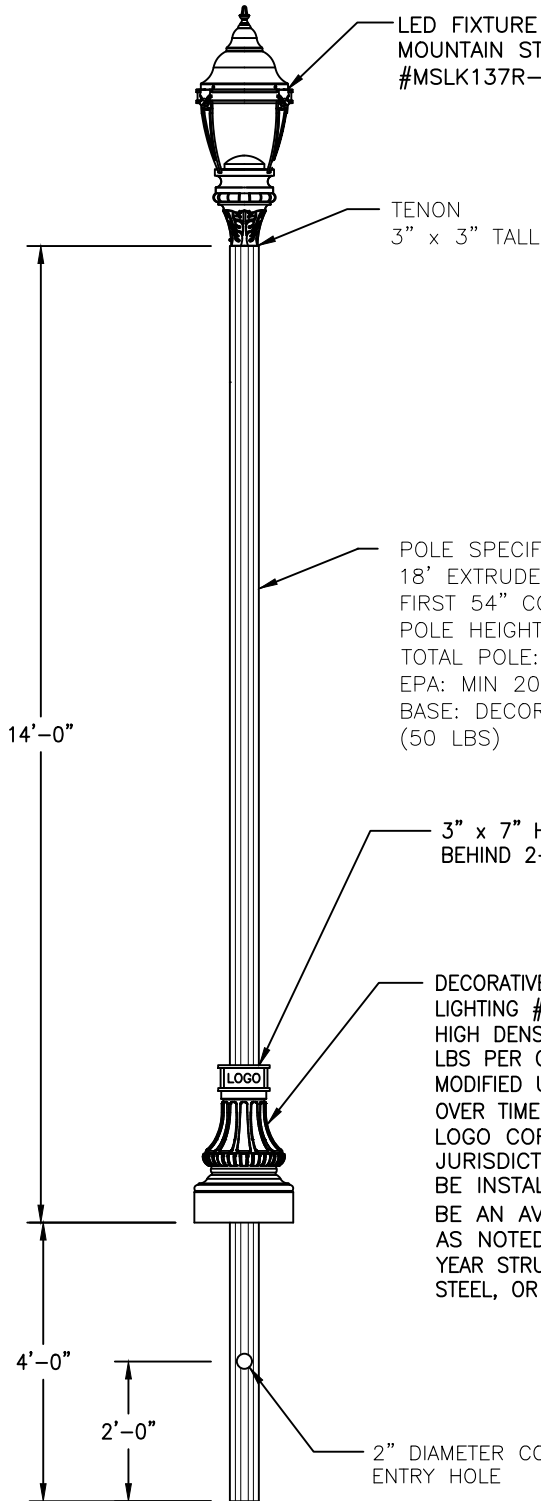


ARTERIAL LED STREET LIGHT

STANDARD PLAN  
160  
SHEET 2 OF 2

REV. 2021-0

ASSEMBLY COLOR: BLACK



LED FIXTURE (7 YEAR WARRANTY)  
MOUNTAIN STATES LIGHTING  
#MSLK137R-III-75-120/277

TENON  
3" x 3" TALL

FIXTURE SPECIFICATIONS:

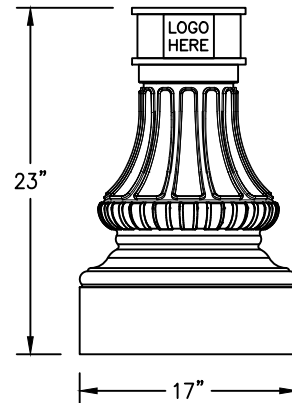
CATALOG NO.: K137R-P4NG-III-75(SSL)-7030-120:277-K14-PR7-4K-TB-1-WS  
OPTICAL SYSTEM: FLAT ARRAY  
IES CLASS.: TYPE III  
INPUT WATTAGE: 75W  
SERIES: SOLID STATE LIGHTING  
CCT: 4000K  
LINE VOLTAGE: 120:277V  
POLE ADAPTOR: K14  
PAINT: BLACK

POLE SPECIFICATIONS: 10 YEAR STRUCTURAL WARRANTY  
18' EXTRUDED ALUMINUM POLE PAINTED WITH THE FIRST 54" COATED WITH COLD TAR EPOXY  
POLE HEIGHT: 18'/14' EXTRUDED ALUMINUM  
TOTAL POLE: 5" O.D., THICKNESS: 0.250"  
EPA: MIN 20 IN 80 MPH ZONE (1.3 GUST FACTOR)  
BASE: DECORATIVE ELASTOMER - AVERAGE 3/4" THICK (50 LBS)

3" x 7" HANDHOLE LOCATED BEHIND 2-PIECE BASE

DECORATIVE BASE BY MOUNTAIN STATES LIGHTING #NW-17"WX23"H-HDEB(LOGO)-BK HIGH DENSITY ELASTOMER WITH DENSITY OF 71 LBS PER CUBIC FOOT. PAINTED BLACK WITH A MODIFIED URETHANE COATING (STAYS FLEXIBLE OVER TIME W/MAX ADHESION). ENGRAVED LOGO CORRESPONDING TO THE JURISDICTION WHERE THE LIGHTPOLE WILL BE INSTALLED CAST INTO BASE. BASE TO BE AN AVERAGE OF 3/8" THICK AND PAINTED AS NOTED (VERIFY PRIOR TO ORDER). 10 YEAR STRUCTURAL WARRANTY. ALUMINUM, STEEL, OR CAST IRON IS NOT ACCEPTABLE

2" DIAMETER CONDUIT ENTRY HOLE



DECORATIVE BASE DETAIL

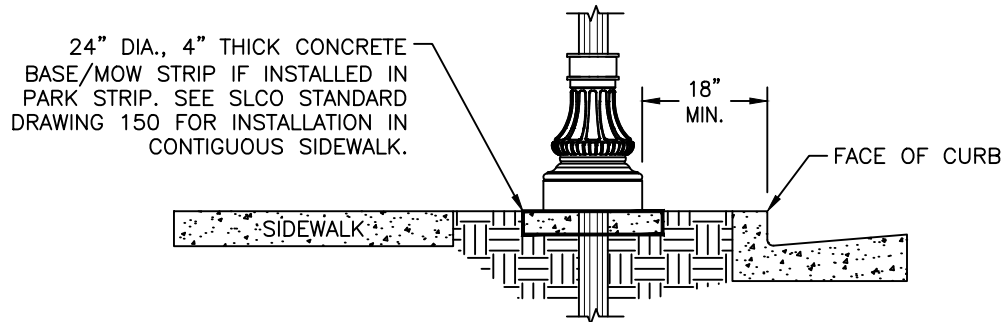
– USE THE LOGO CORRESPONDING WITH THE JURISDICTION WHERE THE LIGHT WILL BE INSTALLED. EXAMPLE LOGOS SHOWN BELOW.



COLOR: COPPER



COLOR: SILVER



INSTALLATION DETAILS



COLLECTOR LED STREET LIGHT

STANDARD PLAN

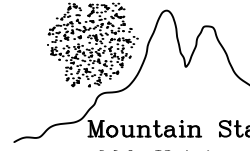
161

SHEET 2 OF 2

REV. 2021-0

ASSEMBLY COLOR: BLACK

MOUNTAIN STATES LIGHTING  
PHOTOCELL #RD8645-BK  
(10YR WARRANTY)



**Mountain States Lighting**  
609 Krista Court  
Murray, Utah 84123  
Phone 801-268-4879  
Fax 801-605-9058

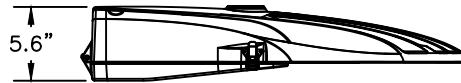
FIXTURE BY MSL  
W/10YR WARRANTY  
ESU-CA13M10042L-700

**LUMINAIRE SPECIFICATIONS:**

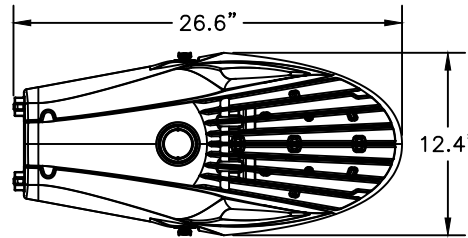
- 10 YEAR WARRANTY
- LOW COPPER DIE-CAST HOUSING & POWER DOORS. 3,000 HOURS SALT SPRAY TO ASTM D1654-08
- IP 66 ON LIGHT ENGINE CONSISTING OF 4000K CREE XP-G3 LEDS, >70 COLOR RENDERING INDEX (CRI) INJECTION MOLDED POLYCARBONATE OPTICS LENS EMBOSSED WITH THE LIGHT DISTRIBUTION TYPE
- PHILIPS ADVANCE CLASS 1 RATED DIMMING LED DRIVER OPERATES 120~277VAC(STANDARD), 50-60HZ. SPECIFIC DRIVE CURRENT >90% POWER FACTOR, <20% THD. (480V INPUT VOLTAGE AVAILABLE)
- OPERATING TEMPERATURE RANGE IS -40°F TO +130°F
- L70 @ 100,000 HRS. @25°C. DRIVER 100,000 HRS <65°F
- UL/ DLC LISTED. MANUFACTURED IN U.S.A. ROHS, VIBRATION TESTED TO ANSI 136.31 FOR BRIDGE APPLICATIONS
- UL 1598 & UL8750 STANDARDS
- ANSI C136.15 WATTAGE SMALL DECAL
- NEMA TWIST-LOCK RECEPTACLE
- BIRD GUARD
- ANSI C136.41 7-PIN DIMMING RECEPTACLE
- 20KVA SPD SURGE SUPPRESSION

FINISH:  
BLACK

MOUNTING:  
O.D. 1.6"~2.6"(STANDARD)



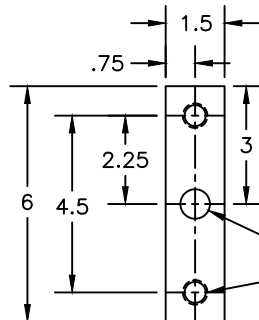
SIDE VIEW



TOP VIEW

ROADWAY LED FIXTURE DETAIL

POLE BY MOUNTAIN STATES LIGHTING  
P#30TRTS-7/4.5-(1)ARM/60"L-BK  
30' TAPERED SMOOTH STEEL  
PAINTED BLACK  
MIN EPA OF 12 IN 80 MPH ZONE  
(1.3 GUST FACTOR)



ARM MOUNT DETAIL

ARM MOUNT PLATE WELDED ON ARM  
SIDE WITH WIRE HOLE CENTERED 6"  
DOWN FROM TOP OF POLE. PLATES  
ARE 1" THICK STEEL. ONE COVER  
PLATE IS INCLUDED FOR SINGLE ARM  
APPLICATIONS

- ¾" DIAMETER WIRE ACCESS HOLE
- ⅝" x 11 UNC THREADED HOLE - 2 PLCS

30'

3" X 5" HANDHOLE  
WITH COVER

BOLT COVER COLOR  
TO MATCH POLE



**INDUSTRIAL LED STREET LIGHT**

STANDARD PLAN

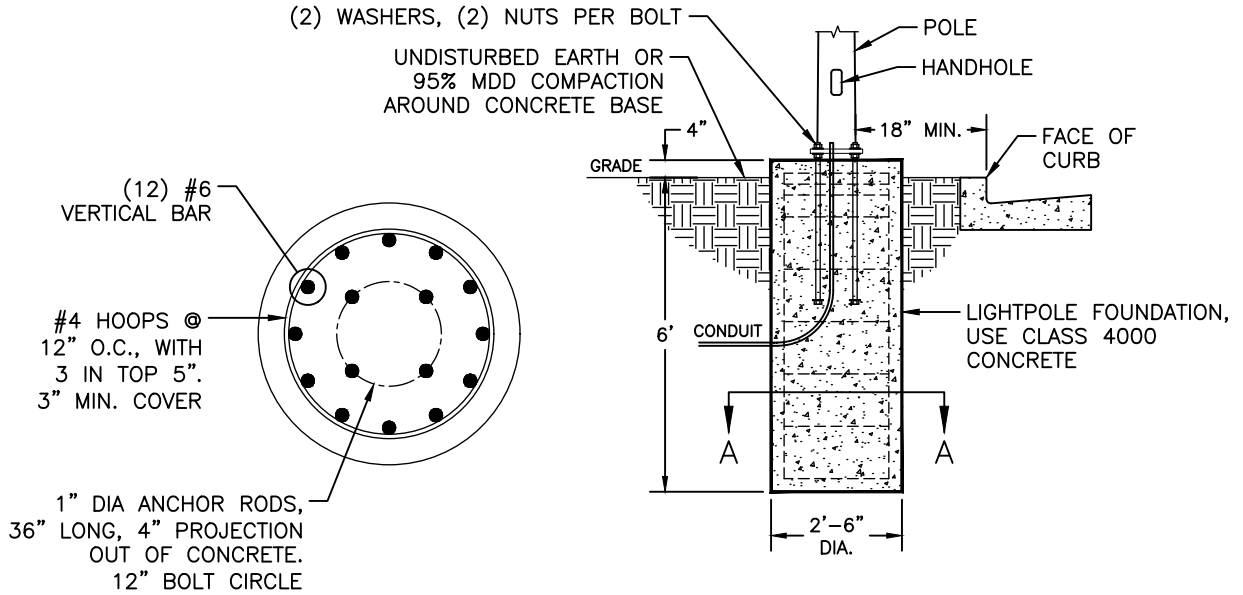
162

SHEET 1 OF 2

REV. 2021-0

**NOTES:**

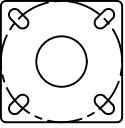
1. SEE SLCO STANDARD DRAWING 150 FOR PLACEMENT IN CONTIGUOUS SIDEWALK.
2. FOUNDATION DETAILS CAN VARY FROM THOSE SHOWN HERE WITH A SITE SPECIFIC FOUNDATION DESIGN THAT HAS BEEN REVIEWED AND APPROVED BY SALT LAKE COUNTY ENGINEERING DEPARTMENT.



SECTION A-A

30' INDUSTRIAL POLE FOUNDATION DETAILS

**ANCHOR PLATE DETAIL**



**BASE PLATE**  
1" THICK x12.0" x 12.0" (Steel)

**PLATE TEMPLATE**  
4 SLOTTED HOLES (1/8" x 2 1/4")  
90° use 12" Ø BOLT CIRCLE  
12" Ø WIREWAY (CNTR'D.)

**ANCHOR BOLTS**  
4 - 1"Ø x 36" LONG HEADED BOLT  
PROJECT 4" OUT OF CONC.





ASSEMBLY COLOR: BLACK

  
Mountain States Lighting  
609 Krista Court  
Murray, Utah 84123  
Phone 801-268-4879  
Fax 801-605-9058

LED FIXTURE (7 YEAR WARRANTY)  
MOUNTAIN STATES LIGHTING  
#MSLK595-III-60-120/277

TENON  
3" X 3" TALL

FIXTURE SPECIFICATIONS:

CATALOG NO.: K595-P4NL-III-60(SSL)-7030-  
120:277-K14-PR7-3K-TB-BK-1-WS  
OPTICAL SYSTEM: FLAT ARRAY  
IES CLASS.: TYPE III  
INPUT WATTAGE: 60W  
SERIES: SOLID STATE LIGHTING  
CCT: 3000K  
LINE VOLTAGE: 120:277V  
POLE ADAPTOR: K14  
PAINT: BLACK

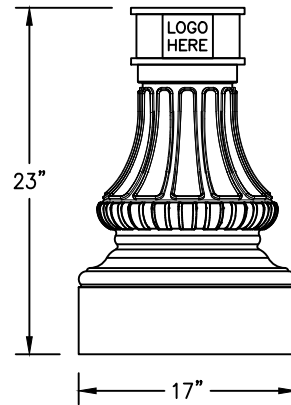
POLE SPECIFICATIONS: 10 YEAR STRUCTURAL WARRANTY  
16' EXTRUDED ALUMINUM POLE PAINTED, WITH THE FIRST 54"  
COATED WITH COLD TAR EPOXY  
POLE HEIGHT: 16'/12' EXTRUDED ALUMINUM  
TOTAL POLE: 5" O.D. THICKNESS: 0.250"  
EPA: MIN 20 IN 80 MPH ZONE (1.3 GUST FACTOR)  
BASE = DECORATIVE ELASTOMER - AVERAGE 3/4" THICK (50 LBS)

3" x 7" HANDHOLE LOCATED  
BEHIND 2-PIECE BASE

DECORATIVE BASE BY MOUNTAIN STATES LIGHTING #  
NW-17"WX23"H-HDEB(LOGO)-BK HIGH DENSITY  
ELASTOMER WITH DENSITY OF 71LBS PER CUBIC FOOT.  
PAINTED BLACK WITH A MODIFIED URETHANE COATING  
(STAYS FLEXIBLE OVER TIME W/MAX ADHESION)  
ENGRAVED LOGO (VERIFY) BASE TO BE AN AVERAGE OF  
5/8" THICK. (10 YEAR STRUCTURAL WARRANTY)  
ALUMINUM, STEEL, OR CAST IRON IS NOT ACCEPTABLE

4'-6" COLD TAR EPOXY DIRECT  
BURIAL PORTION OF POLE

WIRE ACCESS HOLE



DECORATIVE BASE DETAIL

12'-0"

4'-0"

2'-0"

4'-6"



RESIDENTIAL LED STREET LIGHT

STANDARD PLAN

163

SHEET 1 OF 2

REV. 2021-0

– USE THE LOGO CORRESPONDING WITH THE JURISDICTION WHERE THE LIGHT WILL BE INSTALLED. EXAMPLE LOGOS SHOWN BELOW.

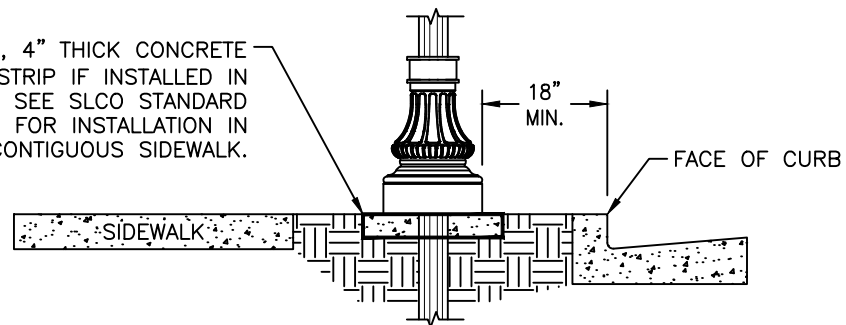


COLOR: COPPER



COLOR: SILVER

24" DIA., 4" THICK CONCRETE  
BASE/MOW STRIP IF INSTALLED IN  
PARK STRIP. SEE SLCO STANDARD  
DRAWING 150 FOR INSTALLATION IN  
CONTIGUOUS SIDEWALK.



INSTALLATION DETAILS



RESIDENTIAL LED STREET LIGHT

STANDARD PLAN

163

SHEET 2 OF 2

REV. 2021-0

**NOTES:**

Materials, construction, and workmanship shall be in accordance with the current edition of "APWA Manual of Standard Specifications" addendums, and modifications thereto; and as directed by the Public Works Engineer.

Cast Iron to conform to ASTM A-48, Class 35B H-20 wheel loading.

Use D&L Supply Co. I-3517 or approved equivalent.

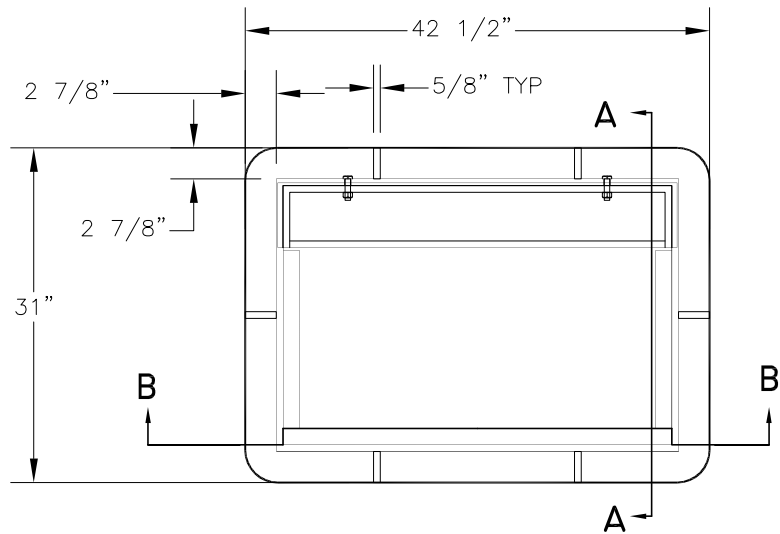
All connecting hardware to be stainless steel.



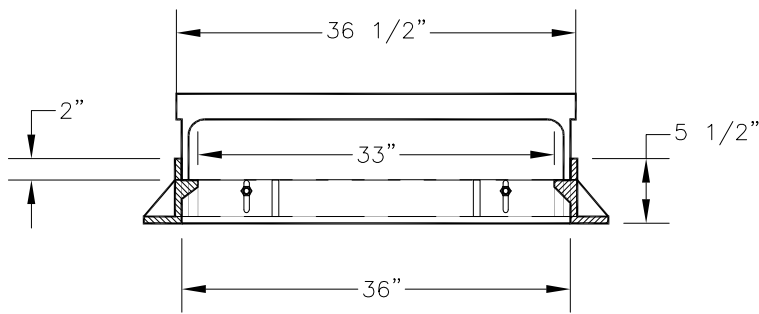
**CURB OPENING FRAME AND GRATE**

STANDARD PLAN  
201  
SHEET 1 OF 2

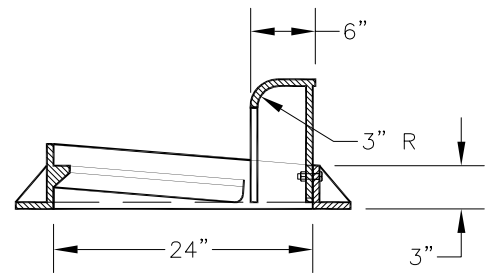
REV. 2022-0



FRAME PLAN

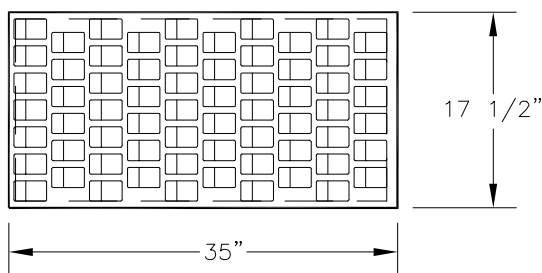


SECTION B-B

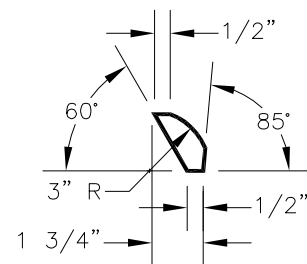


SECTION A-A

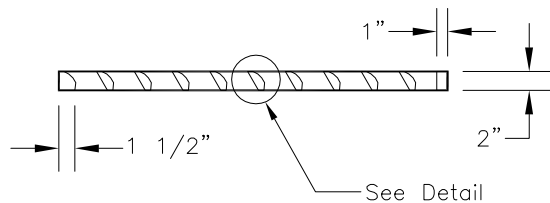
FLOW DIRECTION



GRATE PLAN



DETAIL



CURB OPENING FRAME AND GRATE

STANDARD PLAN  
201  
SHEET 2 OF 2

REV. 2022-0

**NOTES:**

Materials, construction, and workmanship shall be in accordance with the current edition of "APWA Manual of Standard Specifications" addendums, and modifications thereto; and as directed by the Public Works Engineer.

Ladder Rungs: Provide rungs in boxes over 4 feet deep, spaced 12" O.C. When measured from the floor of the box, place bottom rung 16" maximum above box floor. Place top rung within 3 feet of finish grade.

Follow all current OSHA requirements.

Align rungs with lid opening.

Rungs not required in boxes with concentric access.

Ladder rungs shall be copolymer polypropylene plastic coating over a  $\frac{1}{2}$  inch steel bar.

Steel bar shall conform to ASTM 615 Grade 60.

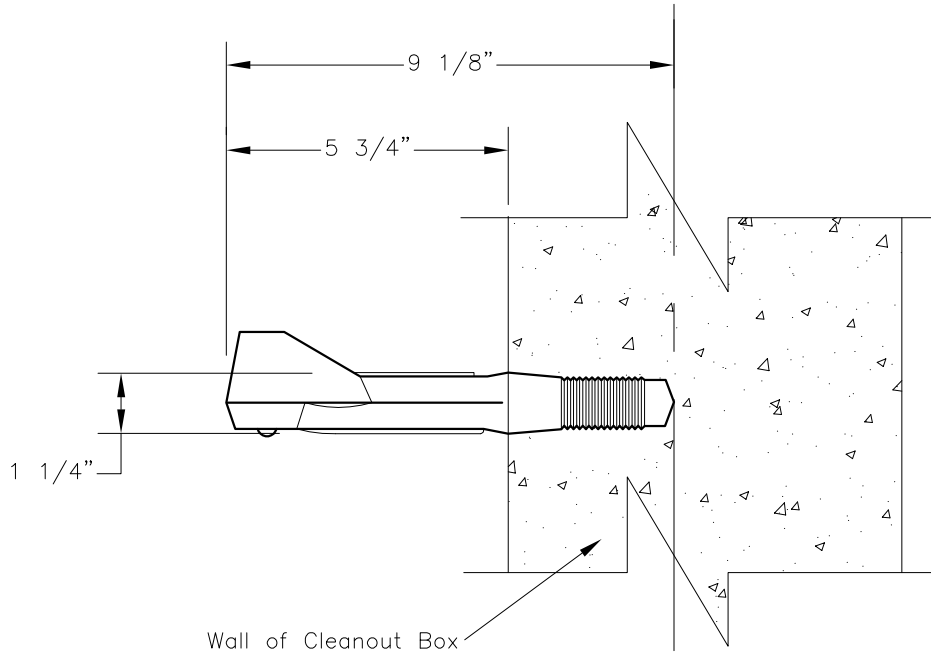
Use M.A. Industries PS1-PF 10" Manhole Single Face Step or approved product with similar materials and ratings with County approval.



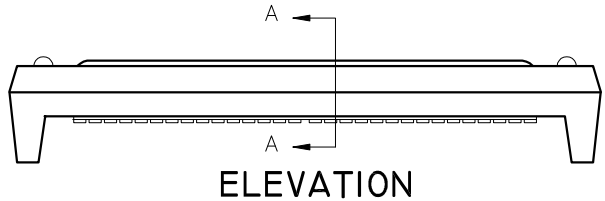
**LADDER RUNG**

STANDARD PLAN  
208  
SHEET 1 OF 2

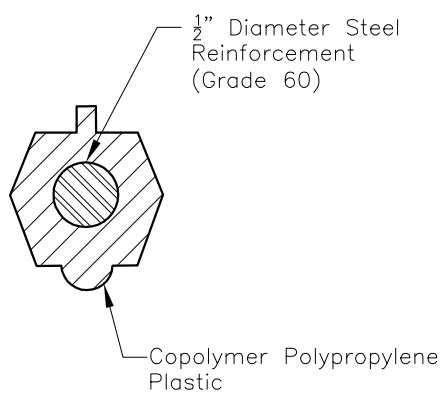
REV. 2021-0



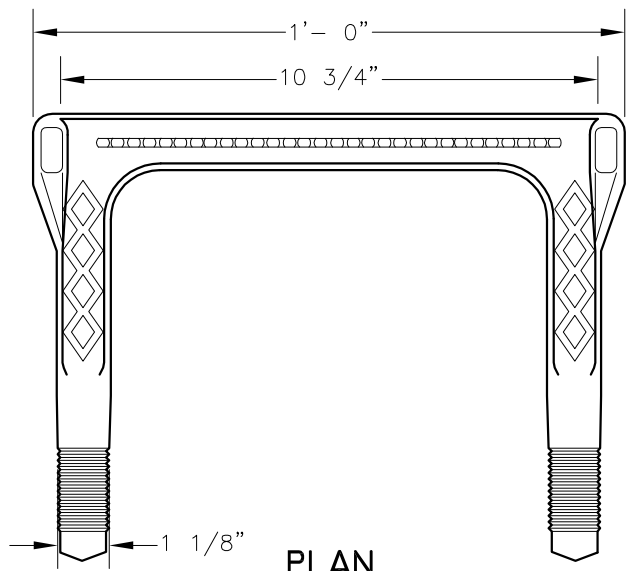
SECTION



ELEVATION



SECTION A-A



PLAN



LADDER RUNG

STANDARD PLAN  
208  
SHEET 2 OF 2

REV. 2021-0

## NOTES:

### GENERAL DETENTION BASIN REQUIREMENTS:

- ① Side slopes shall be a maximum of 3:1
- ② Sides and bottom of basin shall be rock lined. In special circumstances such as when the basin contains a park or playing field, the basin may be lined with grass, with approval of the Public Works Engineer. For rock lining, use 2" rock with a minimum depth of 5" over separation fabric. If grass lined, the area must be adequately irrigated with a permanent pressurized irrigation system.
- ③ 1 foot of freeboard above the 10-year 24-hour storm event level or capacity for the 100-year 24-hour storm
- ④ Concrete low flow pipe or channel preferred

### SECTION A. INLET AND OUTLET STRUCTURE REQUIREMENTS:

- ⑤ Outflow must be restricted per the County requirements
- ⑥ Must include a concrete flared end section and locking grate, unless underground low-flow conveyance is utilized
- ⑦ Pre-treatment required prior to outflow to County Approved facility, outlet structure must conform to SLCo Standard Detail 301 or approved outlet structure.

### SECTION B. REQUIREMENTS FOR ACCESSES TO ALL INLET/OUTLET STRUCTURES:

- ⑧ Must fall within the area of the arc (shown in the Typical County Accessible Road/Pad Detail), which is representative of the maintenance vehicles' reach.
- ⑨ No increase in elevation greater than 5' from surface of County accessible road or pad
- ⑩ No decrease in elevation greater than 35' from surface of County accessible road or pad
- ⑪ Must be a minimum of 45 feet in length from traveled way of connecting roadway if a detention pond specific access road or pad is utilized

### SECTION C. COUNTY ACCESSIBLE ROAD/PAD REQUIREMENTS:

- ⑫ Must be easily accessible by County maintenance vehicles
- ⑬ Must not exceed a maximum longitudinal slope of 12%
- ⑭ Must be at least 10' in width
- ⑮ No cross-slope in excess of 2%
- ⑯ Must be a minimum of 6" thick concrete
- ⑰ Must have measures in place restricting public access (ex. bollards). If bollards are used, must be of stainless steel material.
- ⑱ Must comply with all other local, county, state, and federal requirements



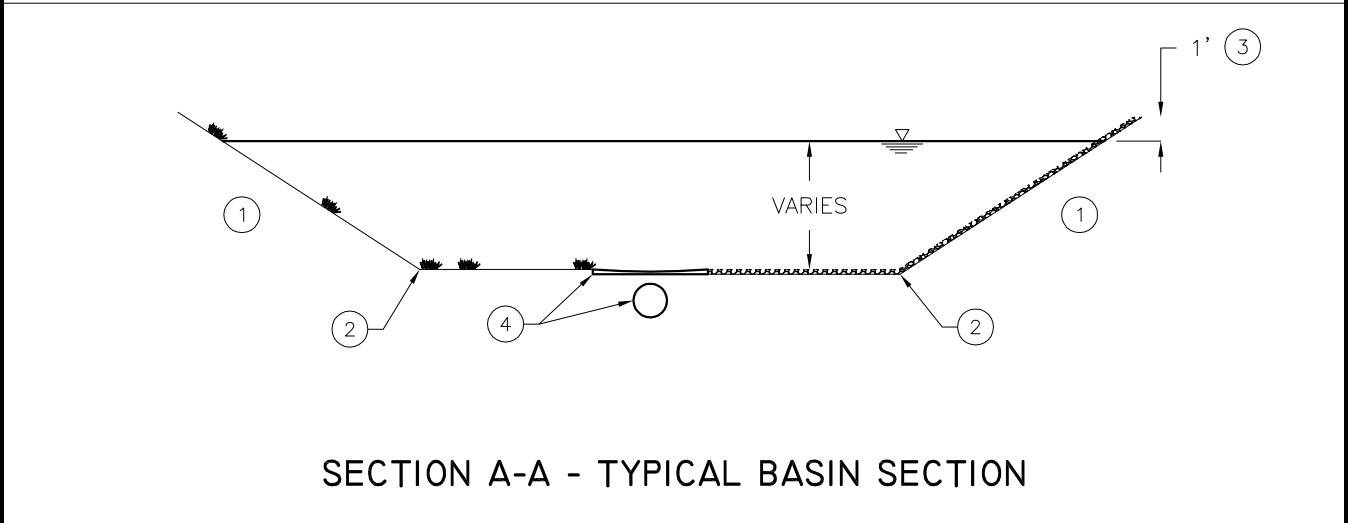
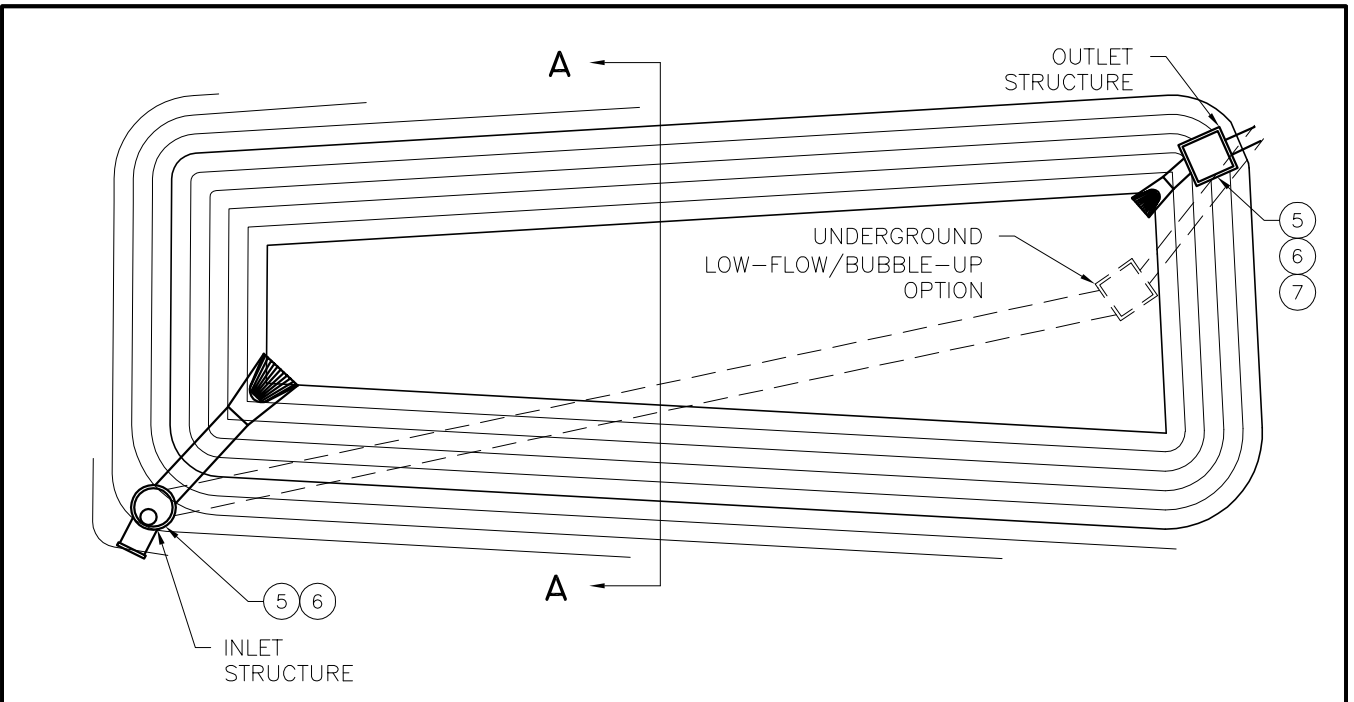
## DETENTION BASIN GUIDELINES

STANDARD PLAN

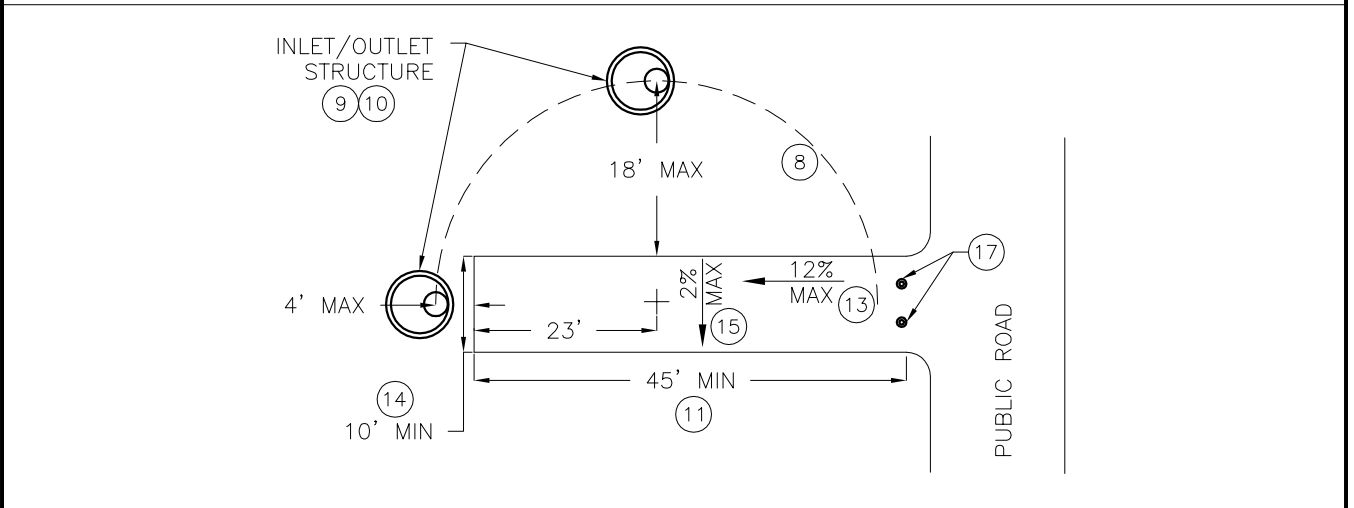
300

SHEET 1 OF 2

REV. 2022-0



SECTION A-A - TYPICAL BASIN SECTION



TYPICAL COUNTY ACCESSIBLE ROAD/PAD DETAIL



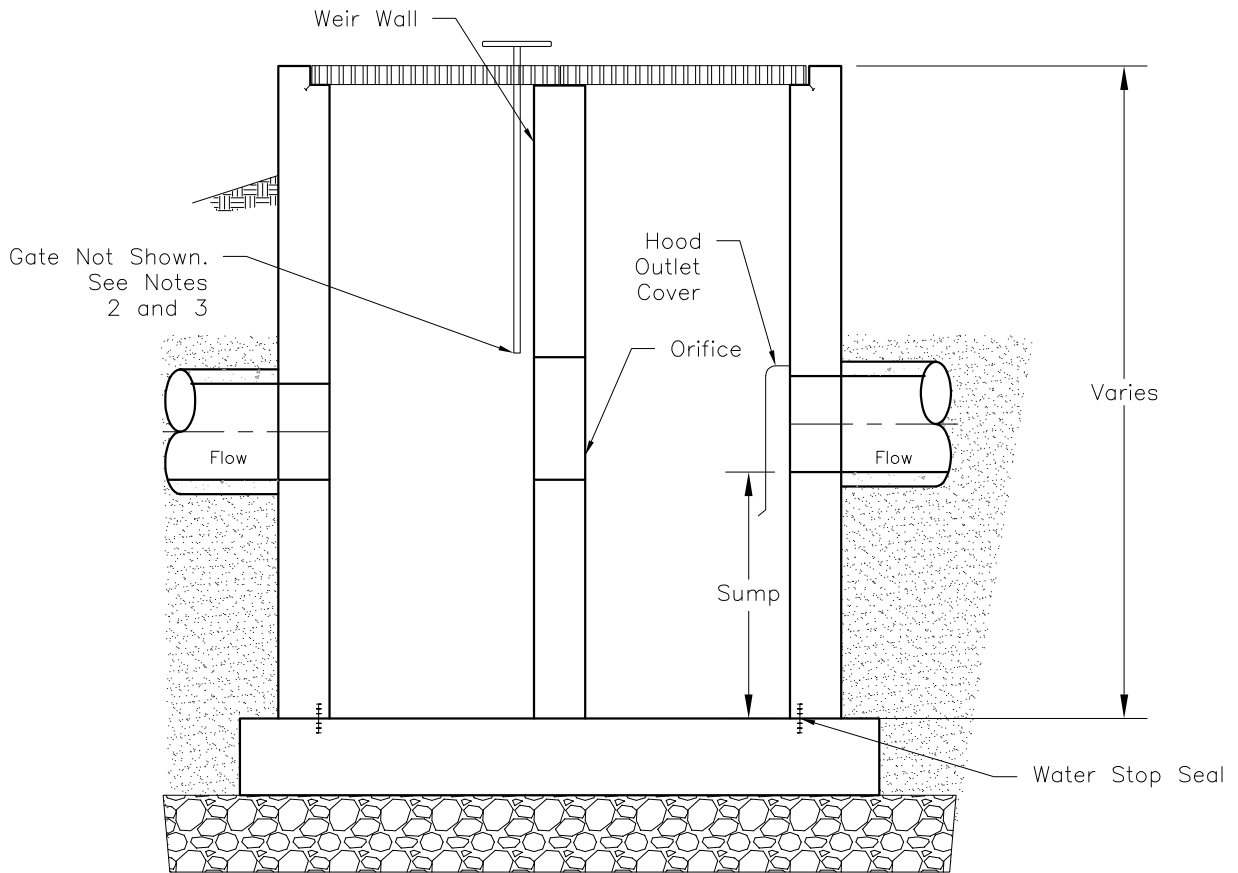
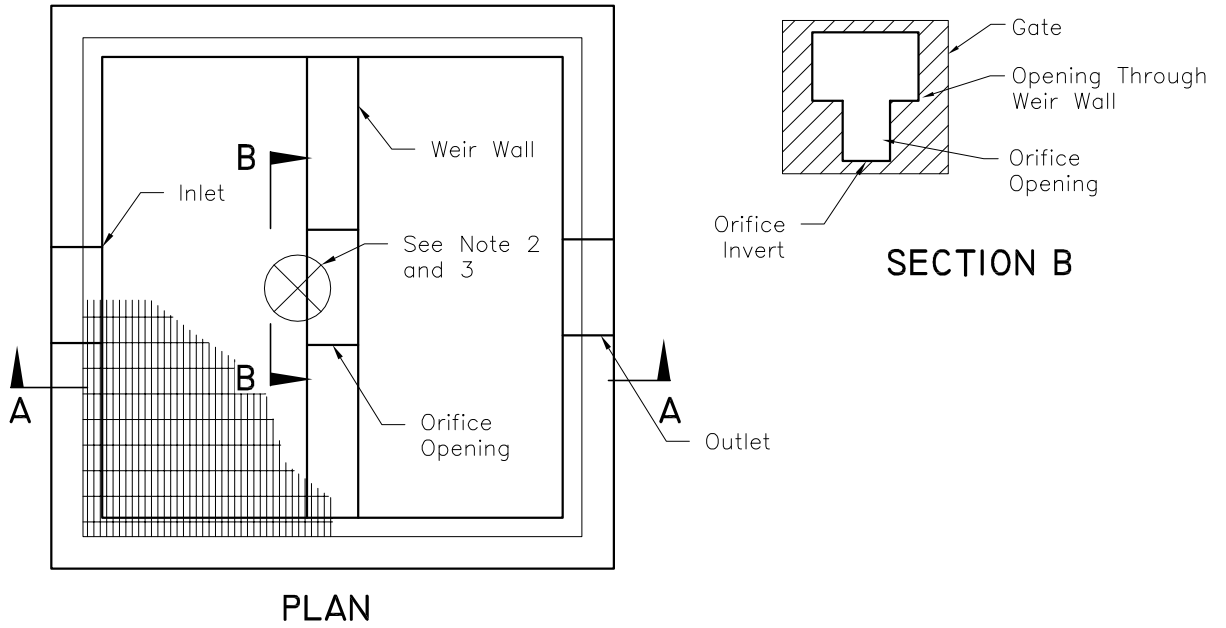


## NOTES:

Materials, construction, and workmanship shall be in accordance with the current edition of "APWA Manual of Standard Specifications" addendums, and modifications thereto; and as directed by the Salt Lake County Public Works Engineer. Reference to specific sections of APWA does not limit requirements to that section.

1. Developer shall install lock and chain on handwheel. Lock to be supplied by SLCO Operations Department.
2. Provide gate with stop nut on stem to hold gate at 10" above invert of orifice or higher.
3. Golden Harvest slide gate with non-rising stem and handwheel, or approved equal. Cut grate as required for extension of frame.
4. The drawing on Sheet 2 is intended to be general in nature, but shows the overall conceptual requirements for the outlet structure, including box with weir wall, orifice, gate, hood, and grated top. The specific size of the components shall be designed for the specific application.





THIS PAGE INTENTIONALLY LEFT BLANK



# flood control and engineering